

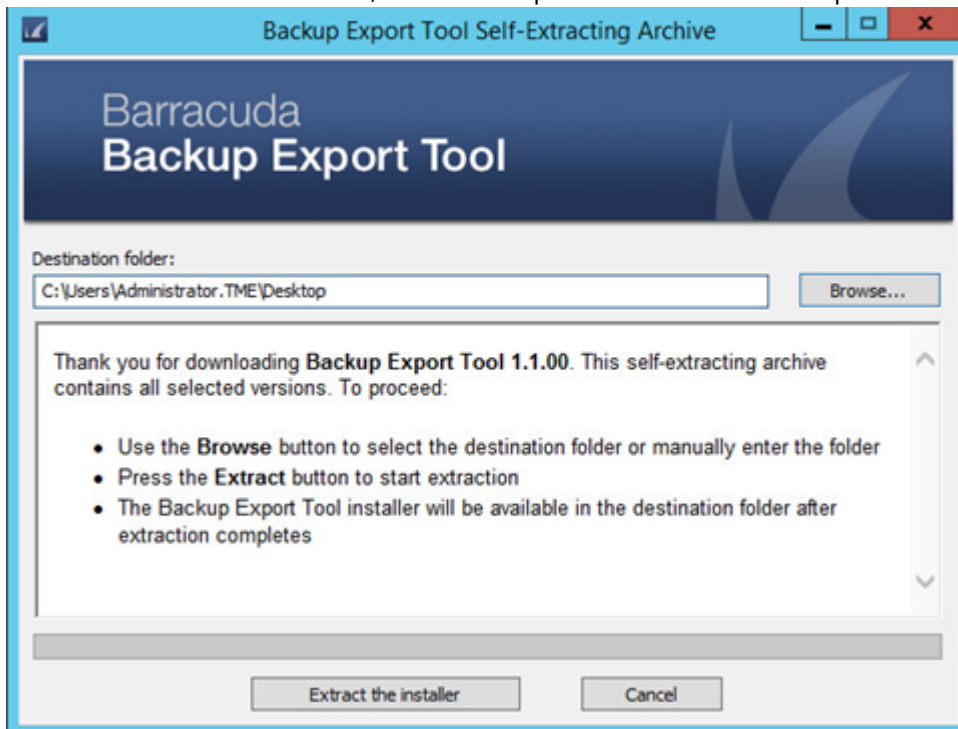


Install and Configure the Backup Export Tool

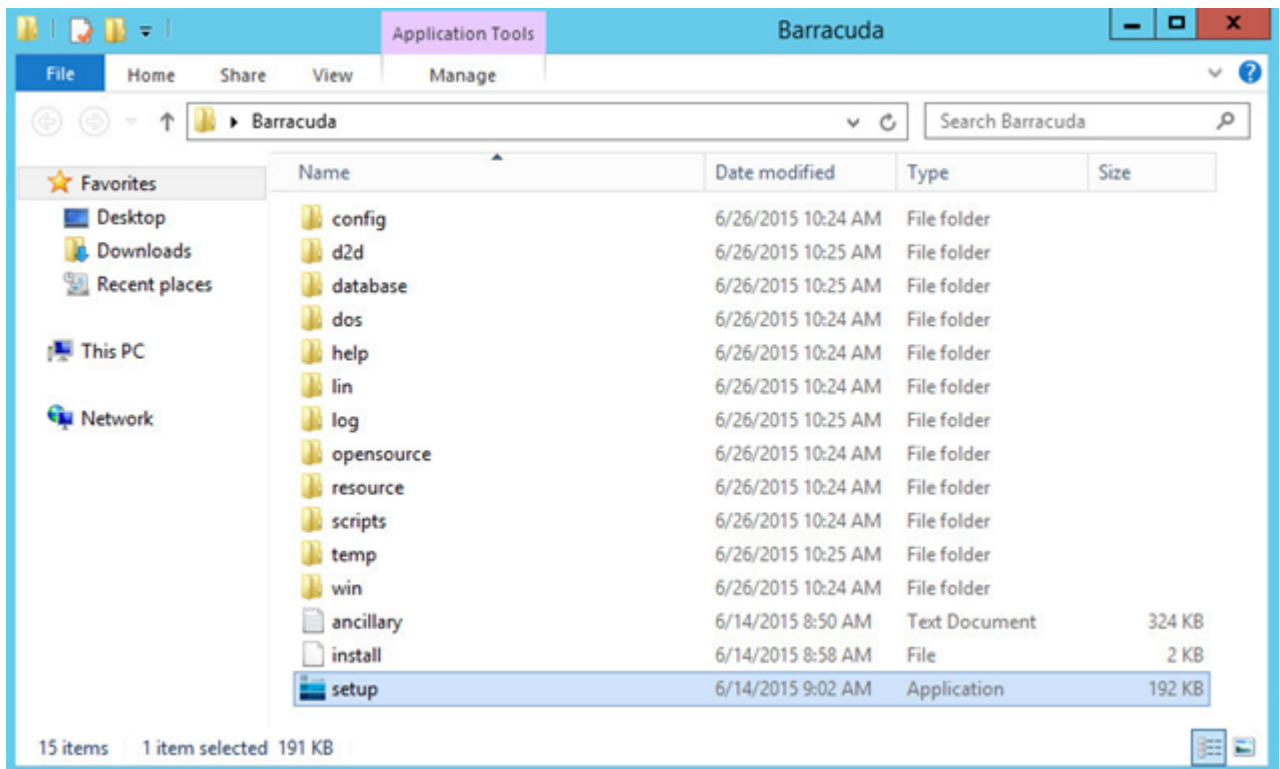
Install the Backup Export Tool

Use the following steps to install the Backup Export Tool:

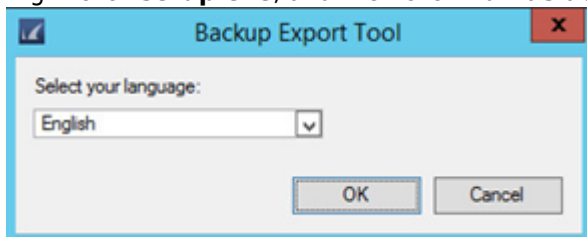
1. Log in to Barracuda Backup, and go to the **System > Software Downloads** page.
2. In the **Backup Export Tool** section, click **Download the latest version** to download and save the Backup Export Tool installer to the target master/media server.
3. **Right-click** the installer, and then click **Run as administrator**.
4. In the installer window, select a **Destination folder** where you want to extract the installer, and then click **Extract the installer**.
5. Once the installer is extracted, locate and open the folder from the specified destination folder:



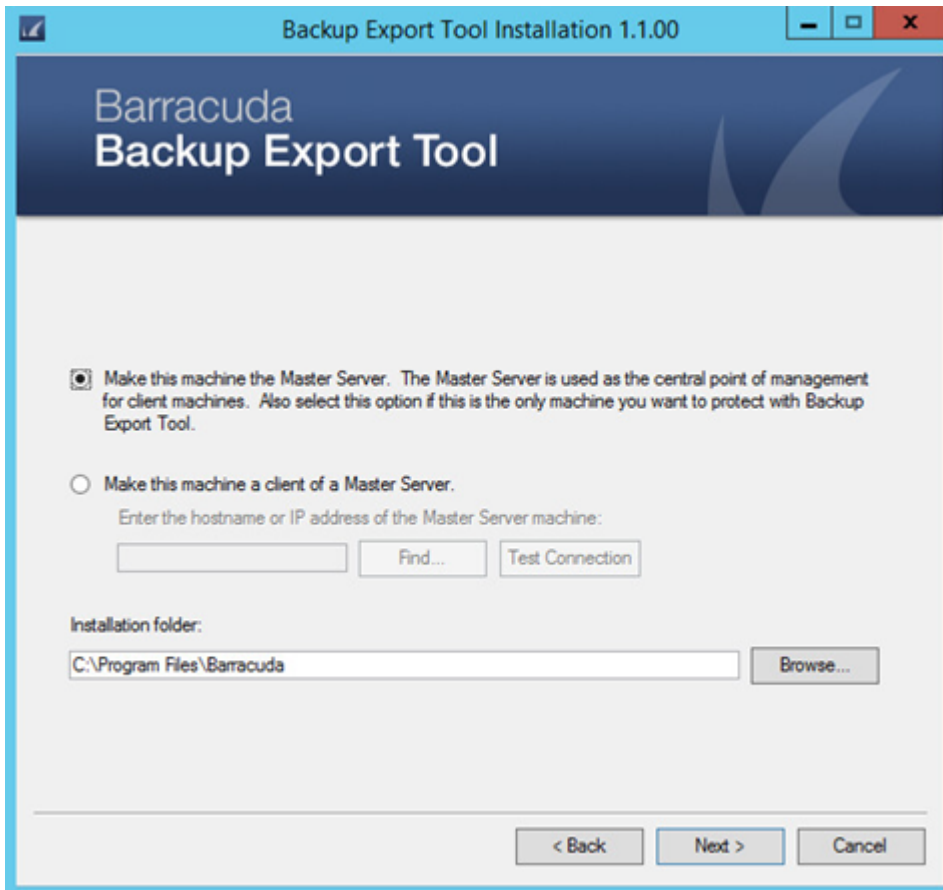
6. Once the installer is extracted, locate and open the folder from the specified destination folder:



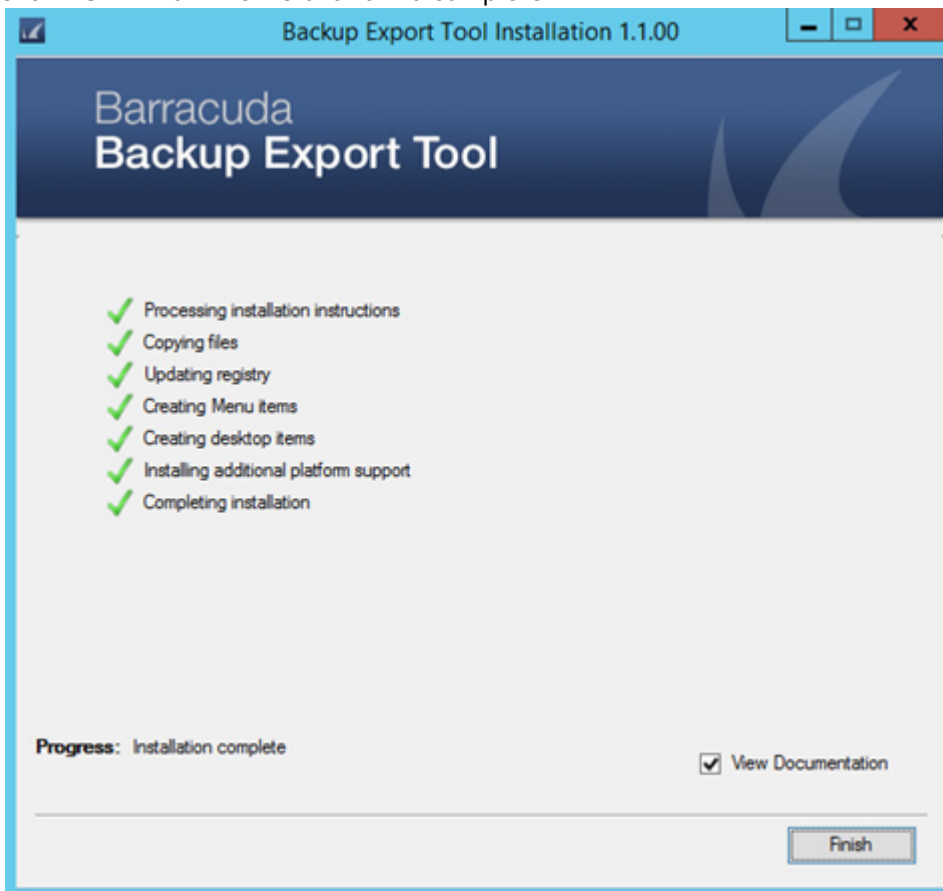
7. Right-click **setup.exe**, and then click **Run as administrator** to launch the Backup Export Tool installer:



8. Select your language from the drop-down menu, and click **OK**.
9. Accept the Software License Agreement terms, and click **Next**.
10. Select **Make this machine the Master Server** and choose an **Installation folder**:



11. Click **Next**. Allow the installation to complete :



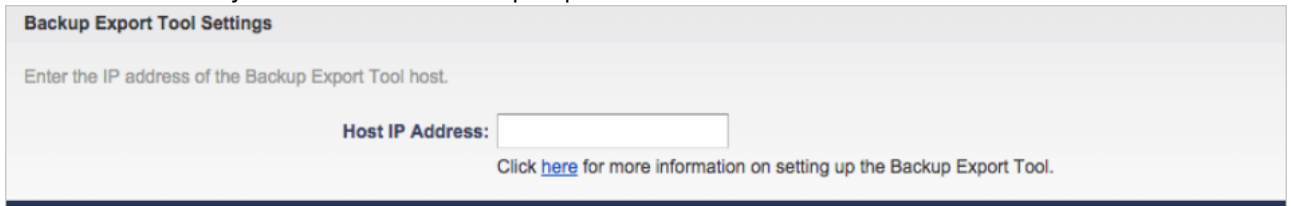
12. Click **Finish**. The Backup Export Tool is now installed.



Configure the Backup Export Tool

Use the following steps to configure the Backup Export Tool:

1. Log in to Barracuda Backup according to your setup:
 - For remotely controlled appliances: log in to <https://login.barracuda.com/>
 - For locally controlled appliances: log in to the appliance IP address
2. Go to the **System > Barracuda Backup Appliance Settings** page, and enter the IP address of the host server where you installed the Backup Export Tool:

A screenshot of the 'Backup Export Tool Settings' page. The page has a light gray background. At the top, the title 'Backup Export Tool Settings' is displayed in a dark gray box. Below the title, there is a text prompt: 'Enter the IP address of the Backup Export Tool host.' In the center, the label 'Host IP Address:' is followed by a white text input field with a thin gray border. Below the input field, there is a blue hyperlink that says 'Click here for more information on setting up the Backup Export Tool.'

3. Click **Save**.
4. The Backup Export Tool is now configured for use.

