

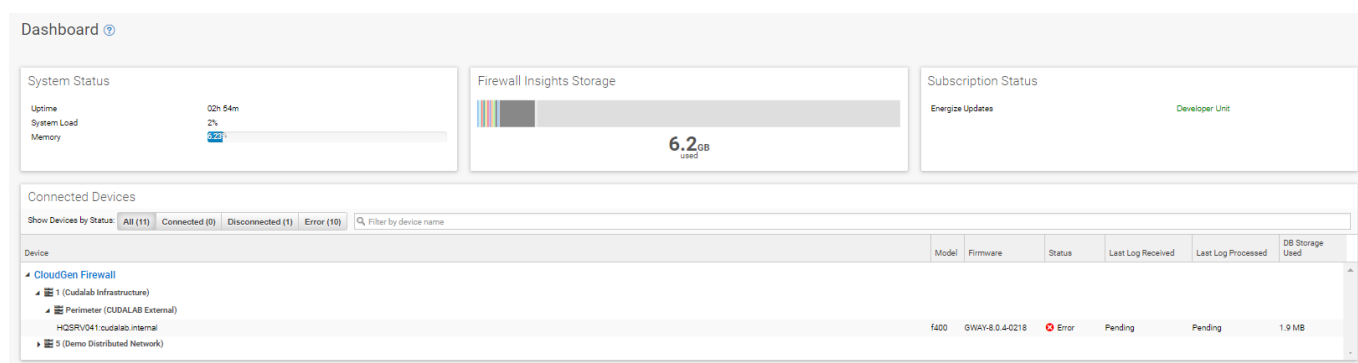
Basic

<https://campus.barracuda.com/doc/84968125/>

The **Basic** section provides important status information for Barracuda Firewall Insights, such as system health and used resources. Based on this information, you can allocate more resources, for example, when there is a high system load or the storage is almost full. This information also helps you to understand if new devices can be connected, if reporting can be enhanced, if log retention periods can be extended, and what steps you must take to perform such changes. You can configure role-based user access using LDAP and assign permissions for Firewall Insights and connected devices. In addition, basic configuration tasks such as network settings, password change, NTP settings, and connected devices, can be performed via the **Basic** child tabs ([IP Configuration](#) and [Administration](#)).

System

You can view the status of your Barracuda Firewall Insights at **BASIC > General**.



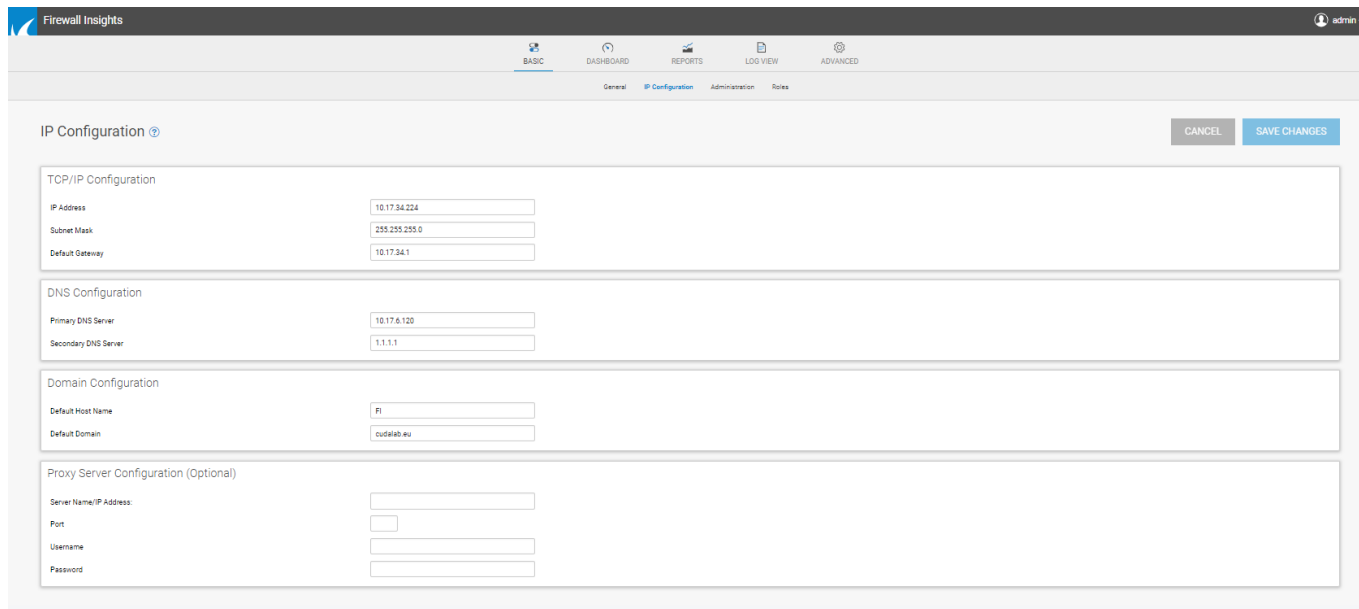
This page shows you the following important information:

- Uptime [dd hh mm]
- System load
- Memory usage in percent
- Used storage in percent
- Subscription status
- Connected devices

For detailed information about the system status, see [General](#).

Network Configuration

Go to **BASIC > IP Configuration** to set up the network configuration of Firewall Insights.



You can enter the following information on this page:

- IP address
- Subnet mask
- Default gateway
- Primary DNS
- Secondary DNS
- Proxy settings

To configure the network settings above, see [IP Configuration](#).

Administration

To perform basic administration tasks, go to **BASIC > Administration**.

This page shows you the following:

- Password change
- Email notification
- Time settings
- NTP server

- Web interface settings
- Connected devices
- System management

Follow the instructions in [Administration](#) to perform the administration tasks shown above.

Role-Based Access

To create roles and assign permissions to user groups, go to **BASIC > Roles**.

With role-based access configured, users can access Firewall Insights menu items and manage connected firewalls according to permissions defined in roles linked to their LDAP groups.

For information on how to configure role-based access using LDAP, see [Administration](#) and [Roles](#).

Further Information

See the guides below for detailed information:

- [General](#)
- [IP Configuration](#)
- [Administration](#)
- [Roles](#)

Figures

1. b_general.png
2. ipconf.png

© Barracuda Networks Inc., 2024 The information contained within this document is confidential and proprietary to Barracuda Networks Inc. No portion of this document may be copied, distributed, publicized or used for other than internal documentary purposes without the written consent of an official representative of Barracuda Networks Inc. All specifications are subject to change without notice. Barracuda Networks Inc. assumes no responsibility for any inaccuracies in this document. Barracuda Networks Inc. reserves the right to change, modify, transfer, or otherwise revise this publication without notice.