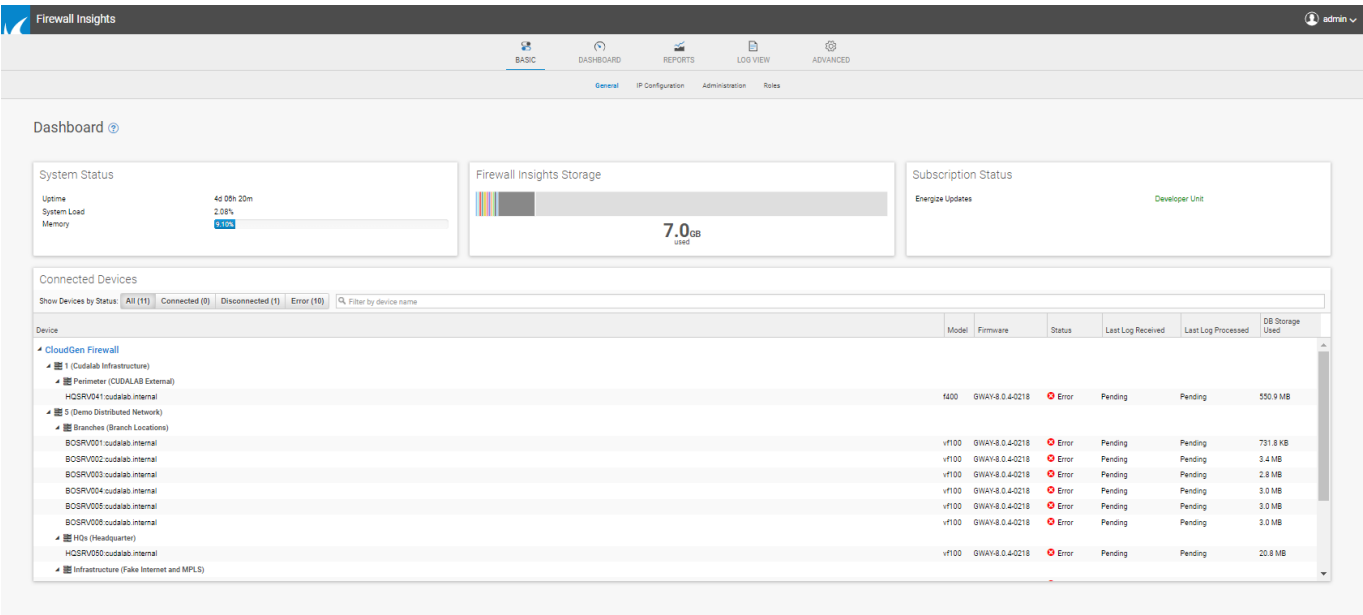


General

<https://campus.barracuda.com/doc/84968128/>

The **Basic > General** tab opens when you select **Basic**. This section shows you important information about the system status and health. Based on this information, you can configure Barracuda Firewall Insights and its resources.



System Status

This section indicates the current operational status of Barracuda Firewall Insights.

The following information is displayed in this section:

- **Uptime** – How long Barracuda Firewall Insights has been up and running.
- **System Load** – A dynamic representation of the load on Barracuda Firewall Insights.
- **Memory** – Percentage of Barracuda Firewall Insights memory used.

Firewall Insights Storage

Displays a graph of the hard disk space currently being used to store reporting information. Hover over the gray section of the graph to see space that is still available.

Each connected device appears in a different color. Hover over each color for details on the

corresponding connected device.

Subscription Status

Displays the current status of the Energize Updates subscription for Barracuda Firewall Insights.

Connected Devices

Lists the current operational status of each of Barracuda Networks device linked to Barracuda Firewall Insights, as well as the Barracuda Firewall Insights operational status for the logs received and processed for each connected device.

Note

High availability clusters are displayed as one CloudGen Firewall with the name of the primary device.

Use the search bar to locate one or more devices.

The Connected Devices table displays the following information:

- **Device** – Name of the Barracuda CloudGen Firewall that is linked to Barracuda Firewall Insights.
- **Model** – Model number of the linked Barracuda Networks device.
- **Firmware** – Version of the firmware installed on the linked Barracuda Networks device.
- **Status** – Whether the Barracuda Networks device is connected to Barracuda Firewall Insights. You can choose to display devices based on their status by using the selectors at the top of this section.
Status values are:
 - **All** – Displays every device connected to Firewall Insights.
 - **Connected** – The device is connected and functioning properly.
 - **Disconnected** – The device was intentionally disconnected and was disconnected successfully.
 - **Error** – There is an error with the device connection. The device is not communicating with Barracuda Firewall Insights. For troubleshooting information, refer to [Troubleshooting](#).
- **Last Log Received** – Date and time stamp of the last time a log was passed from the connected Barracuda Networks device to Barracuda Firewall Insights.
- **Last Log Processed** – Date and time stamp of the last time a log from this device was

processed by Barracuda Firewall Insights.

- **Storage Used** – How much of the available storage on the device has been used.

Figures

1. dashboard.png

© Barracuda Networks Inc., 2024 The information contained within this document is confidential and proprietary to Barracuda Networks Inc. No portion of this document may be copied, distributed, publicized or used for other than internal documentary purposes without the written consent of an official representative of Barracuda Networks Inc. All specifications are subject to change without notice. Barracuda Networks Inc. assumes no responsibility for any inaccuracies in this document. Barracuda Networks Inc. reserves the right to change, modify, transfer, or otherwise revise this publication without notice.