

Dashboard

<https://campus.barracuda.com/doc/84968136/>

The **Dashboard** tab and child pages provide aggregated data on SD-WAN, SD-WAN tunnels, network traffic, and security information. Use various filters, as described below, to get the specific data you need.

Barracuda Firewall Insights explicitly provides information about SD-WAN tunnels. Information on non-SD-WAN-enabled VPN tunnels, such as IPsec, Client-to-Site, or SSL-VPN, is not displayed in the interface.

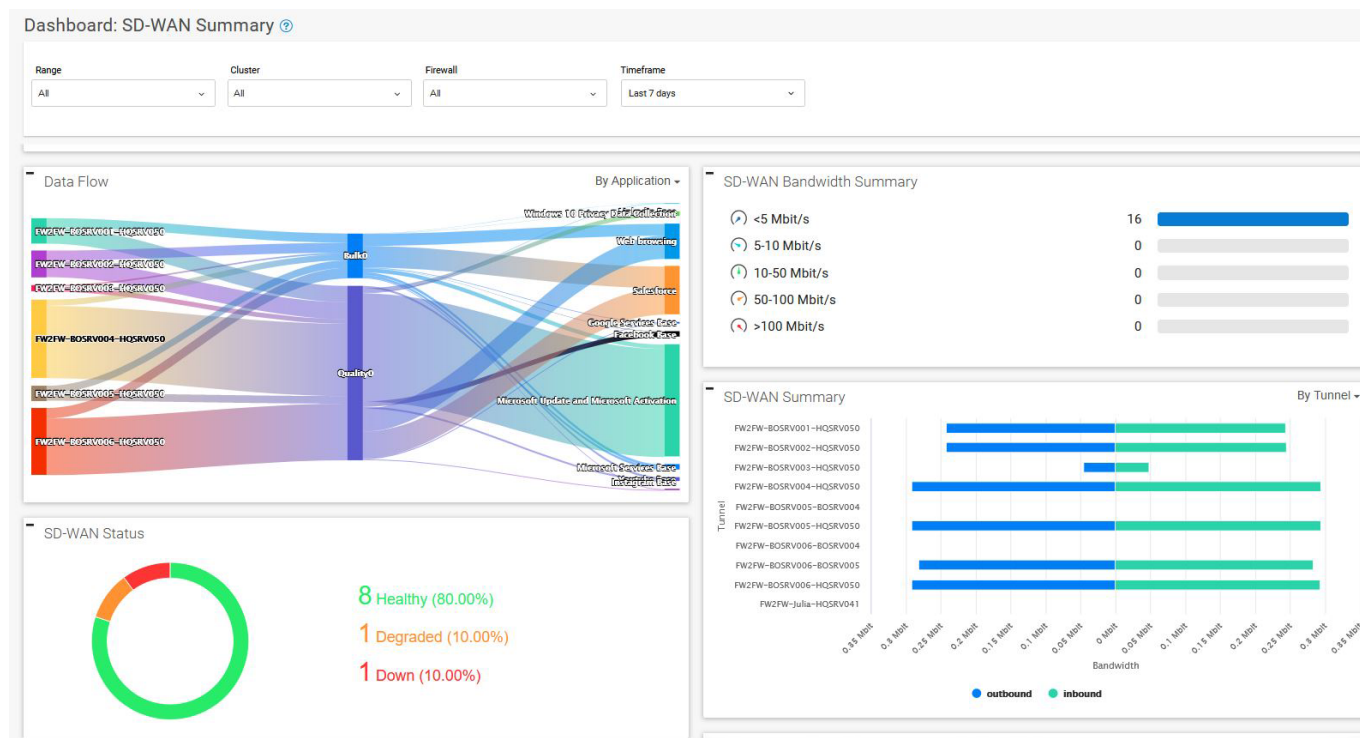
Accessing Information on the Dashboard

If Barracuda Firewall Insights is connected to more than 5 CloudGen Firewall devices, the search in the filters is extended to type-to-search.

To access information on the Firewall Insights Dashboard, click the corresponding tab:

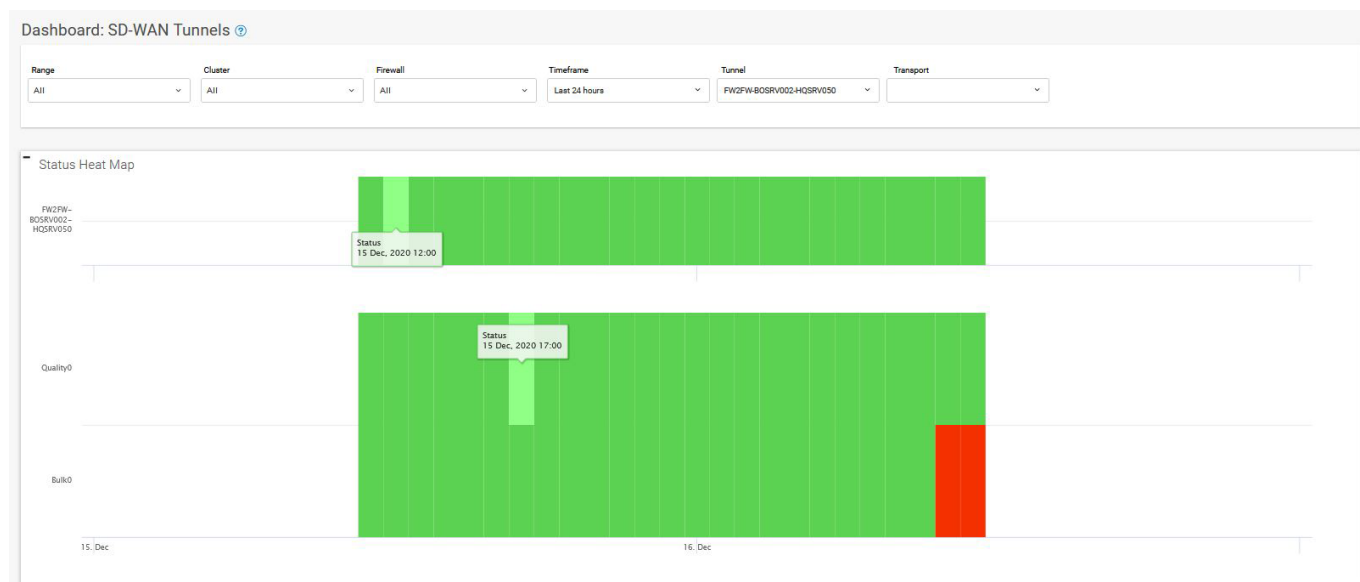
SD-WAN Summary

Go to **Dashboard > SD-WAN Summary**.



SD-WAN Tunnels

Go to **Dashboard > SD-WAN Tunnels**.



To view the status of SD-WAN tunnels for a selected period of time, use the filters above the graph. The SD-WAN tunnel status is indicated by different colors:

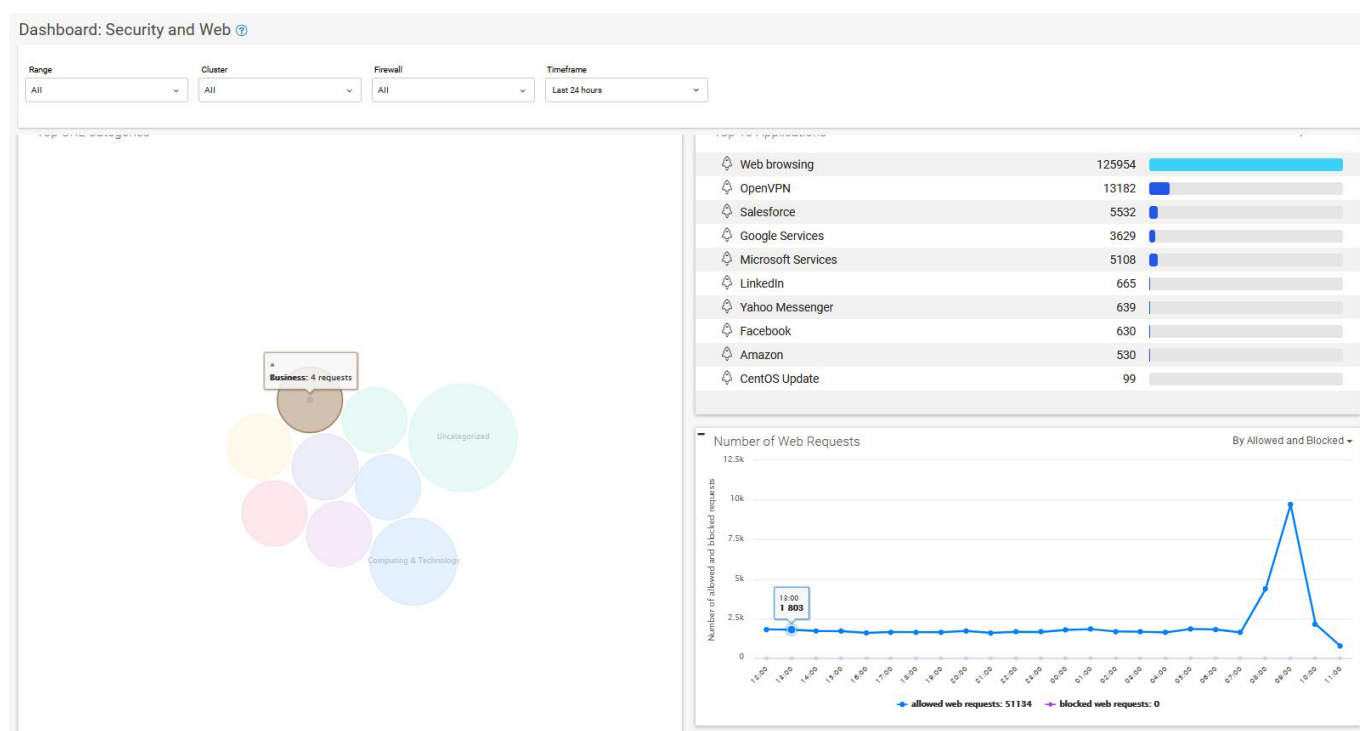
- **Green** – More than 50% online during the time span.
- **Red** – More than 50% offline during the time span.

- **White** – Firewall has not sent any data during the time span.

The time span displayed in the graph depends on the scope selected on the dashboard. The status can therefore also change when the time span is changed.

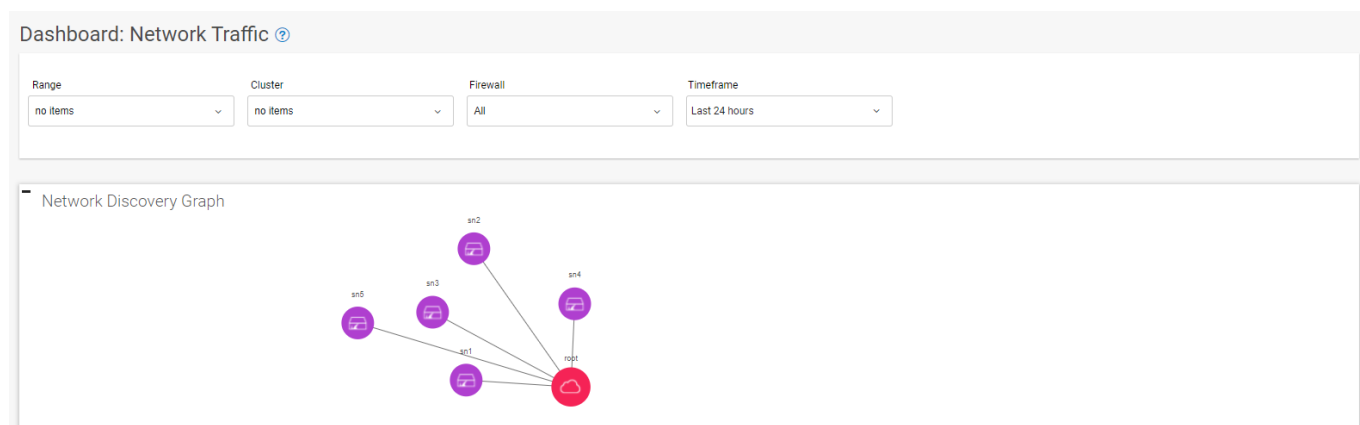
Security and Web

Go to **Dashboard > Security and Web**.



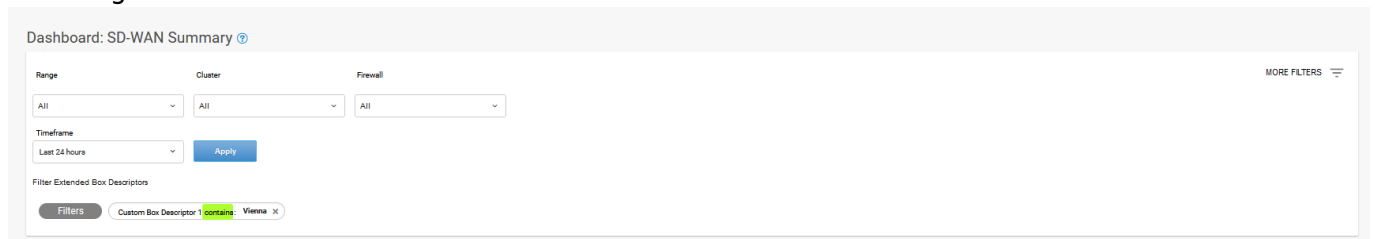
Network Traffic

Go to **Dashboard > Network Traffic**.



Display Information Using Filters

For the **SD-WAN Summary**, **Security and Web**, and **Network Traffic** tabs, you can select the following filters:

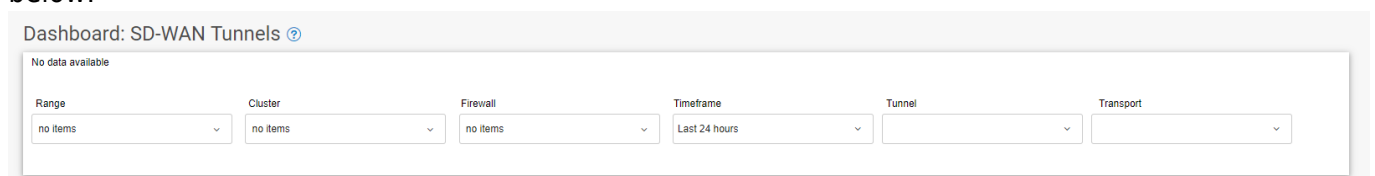


- **Range** – Select the range where the CloudGen Firewall devices you want data on are located.
- **Cluster** – Select the cluster where the CloudGen Firewall devices you want data on are located.
- **Firewall** – Select the CloudGen Firewall devices you want data on.
- **Timeframe** – Choose a time frame from the drop-down menu to specify the time frame you want to show the data for.

If configured, additional filtering criteria, such as country, state, and location, will be available for selection. To filter for extended box descriptors, click **MORE FILTERS** in the top-right corner and use the additional filters to narrow down your selection. Extended box descriptors must be configured on the respective firewall to show this filtering function. For more information, see [How to Configure Custom Box Descriptors and Filter Managed Firewalls in Different Data Views](#) in the CloudGen Firewall documentation.

This feature requires Barracuda CloudGen Firewall and Control Center version 8.3.1 or higher.

For the **SD-WAN Tunnels** tab, you can select the filters described above and the additional filters below:



- **Tunnel** – Select the tunnel you want to show the data of.
- **Transport** – Select the transport you want to show the data of.

The information is displayed for the filters you set.

Figures

1. sdwan_summary.png
2. sdwan_tunnels.png
3. security_web.png
4. network_traffic.png
5. dashboard_filter.png
6. dashboard_tunnels.png

© Barracuda Networks Inc., 2024 The information contained within this document is confidential and proprietary to Barracuda Networks Inc. No portion of this document may be copied, distributed, publicized or used for other than internal documentary purposes without the written consent of an official representative of Barracuda Networks Inc. All specifications are subject to change without notice. Barracuda Networks Inc. assumes no responsibility for any inaccuracies in this document. Barracuda Networks Inc. reserves the right to change, modify, transfer, or otherwise revise this publication without notice.