

How to Set the OMS Version to a Specific Version in Azure

<https://campus.barracuda.com/doc/87195773/>

In certain cases it may be necessary to set the OMS version of your CloudGen Firewall in Azure to a specific version. Follow the steps in this article to pin your OMS version.

If you disconnect and reconnect the **Log Analytics workspace** through the Azure portal after pinning the OMS version, your changes will be lost. In this case, please repeat the steps in this article to pin the version again if you still need this feature.

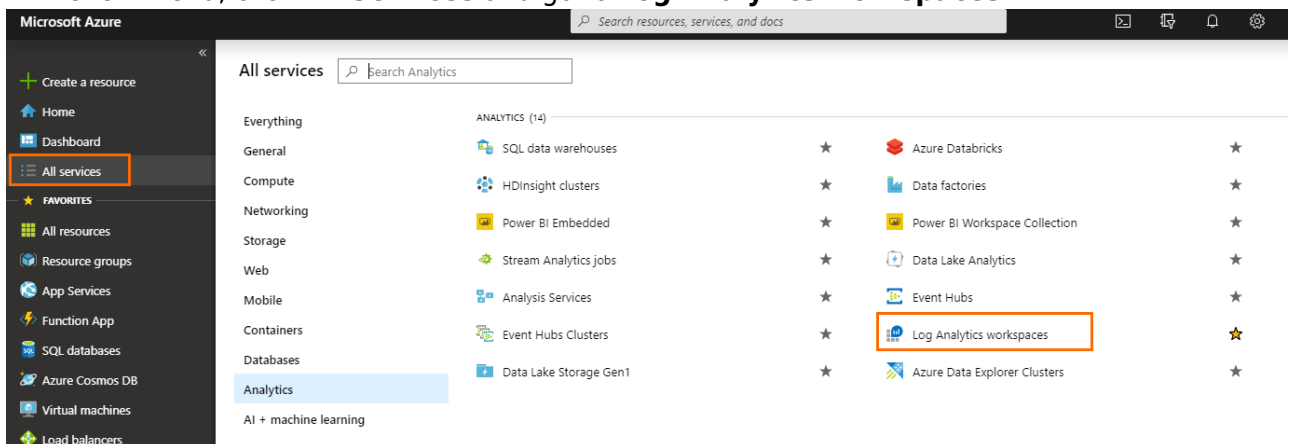
Before You Begin

- To enable OMS log streaming on your CloudGen Firewall, see [How to Configure Azure OMS Log Streaming](#).

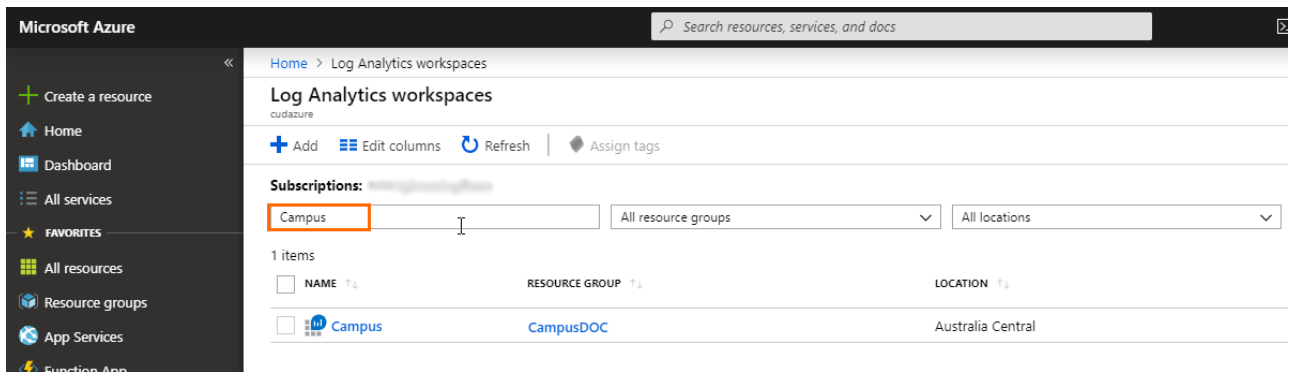
Step 1. (optional) Disconnect the Log Analytics Workspace from Your CloudGen Firewall

This step is necessary only if your **Log Analytics workspace** is already connected to your CloudGen Firewall.

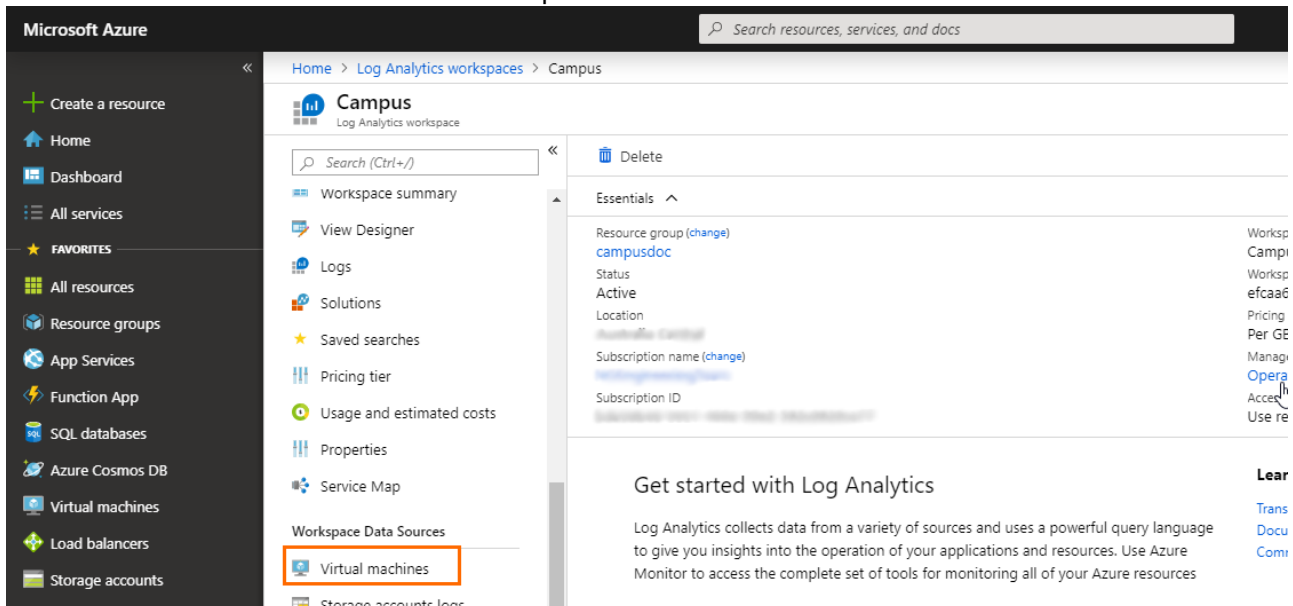
1. Log into the Azure portal: <https://portal.azure.com>
2. In the left menu, click **All Services** and go to **Log Analytics workspaces**.



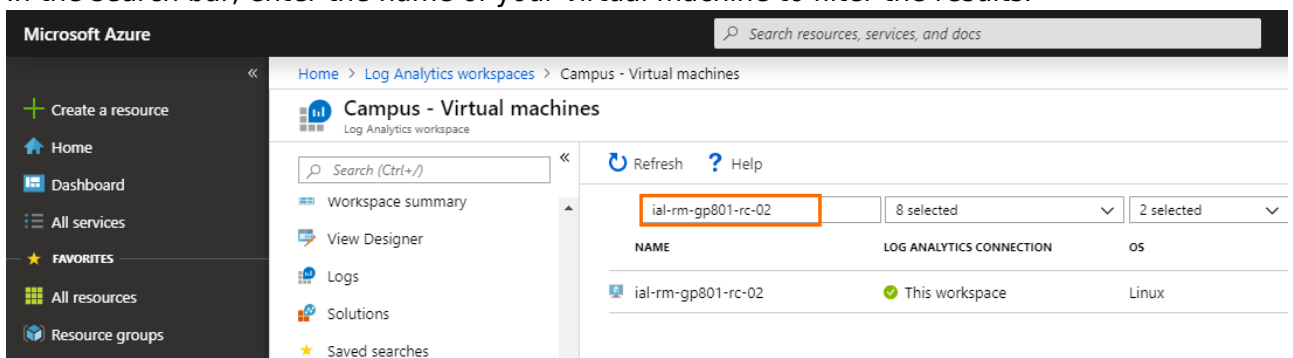
3. In the search bar, enter the name of the **Log Analytics workspace** where your CloudGen Firewall is connected to.



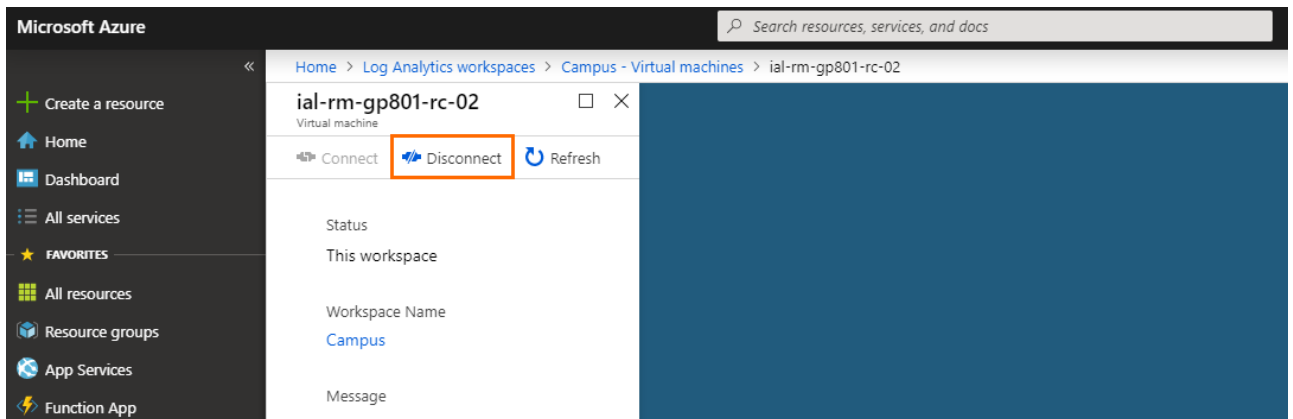
4. To open the workspace, click on the entry of the **Log Analytics workspace** where your CloudGen Firewall is connected to.
5. Click on **Virtual machines** in the workspace.



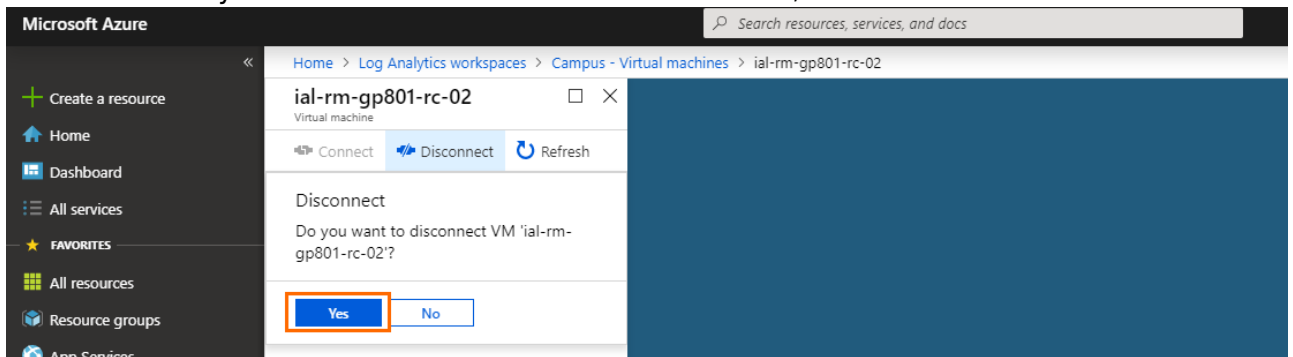
6. In the search bar, enter the name of your virtual machine to filter the results.



7. Click on the entry of the virtual machine of the CloudGen Firewall you want to pin the OMS version for.
8. Click the **Disconnect** button to disconnect your CloudGen Firewall from the **Log Analytics workspace**.



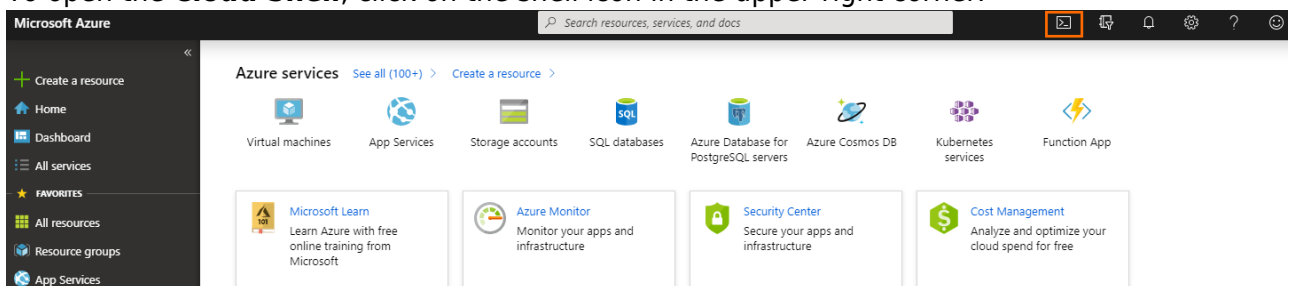
9. To confirm that you want to disconnect the virtual machine, click the **Yes** button.



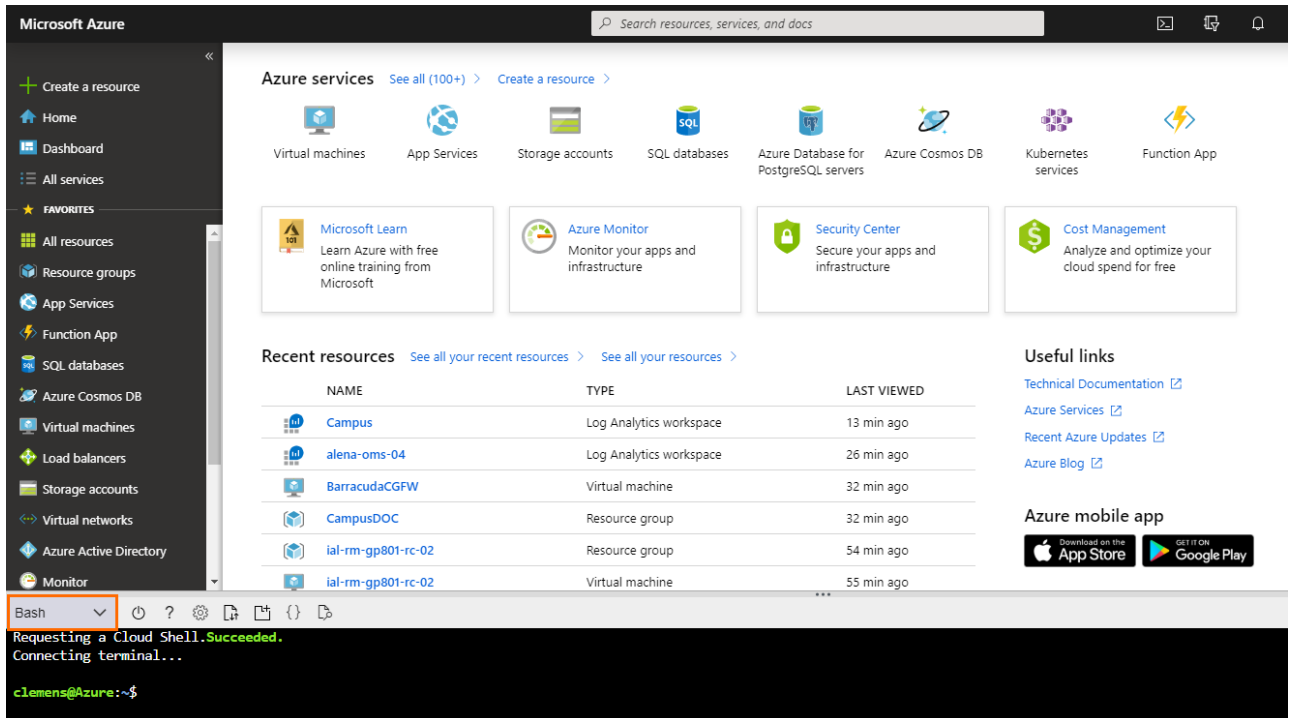
10. Wait until you are informed that it is successfully disconnected.

Step 2. Set the OMS Version

1. Log into the Azure portal: <https://portal.azure.com>
2. To open the **Cloud Shell**, click on the shell icon in the upper-right corner.



3. Select **Bash** in the **Cloud Shell** menu.



The screenshot shows the Microsoft Azure portal. The 'Recent resources' table is as follows:

NAME	TYPE	LAST VIEWED
Campus	Log Analytics workspace	13 min ago
alena-oms-04	Log Analytics workspace	26 min ago
BarracudaCGFW	Virtual machine	32 min ago
CampusDOC	Resource group	32 min ago
ial-rm-gp801-rc-02	Resource group	54 min ago
ial-rm-gp801-rc-02	Virtual machine	55 min ago

The terminal window at the bottom shows the following output:

```
Bash
Requesting a Cloud Shell.Succeeded.
Connecting terminal...
clemens@Azure:~$
```

4. Enter the following command in the shell and press enter to run it:

```
az vm extension set --name OmsAgentForLinux --publisher
Microsoft.EnterpriseCloud.Monitoring --version <version_number> --no-
auto-upgrade --no-wait --force-update --protected-settings
'{"workspaceKey": "<workspace_key>"}' --settings '{"workspaceId":
"<workspace_id>"}' --resource-group "<rg_name>" --vm-name "<vm_name>"
```

5. The OMS version of your CloudGen Firewall is now set to the specified version.

Figures

1. all_services_log.png
2. workspace.png
3. workspace_vm.png
4. vm.png
5. disconnect_vm.png
6. confirmation_disconnect.png
7. cloud_shell.png
8. cloud_shell_bash.png

© Barracuda Networks Inc., 2019 The information contained within this document is confidential and proprietary to Barracuda Networks Inc. No portion of this document may be copied, distributed, publicized or used for other than internal documentary purposes without the written consent of an official representative of Barracuda Networks Inc. All specifications are subject to change without notice. Barracuda Networks Inc. assumes no responsibility for any inaccuracies in this document. Barracuda Networks Inc. reserves the right to change, modify, transfer, or otherwise revise this publication without notice.