

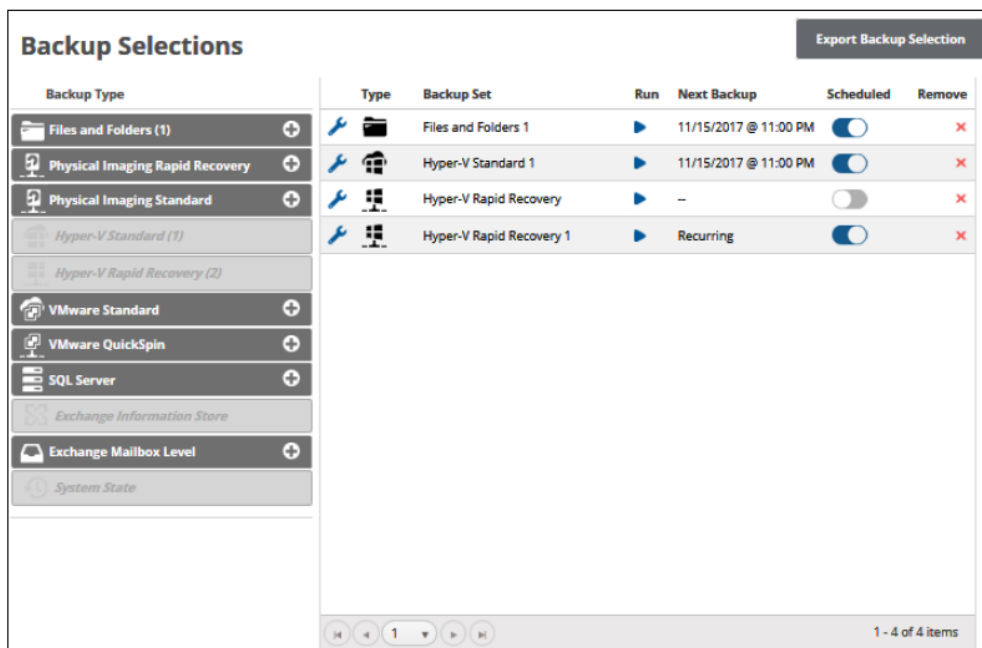
## Removing Exchange Mailbox Level Backup Sets


<https://campus.barracuda.com/doc/88113605/>

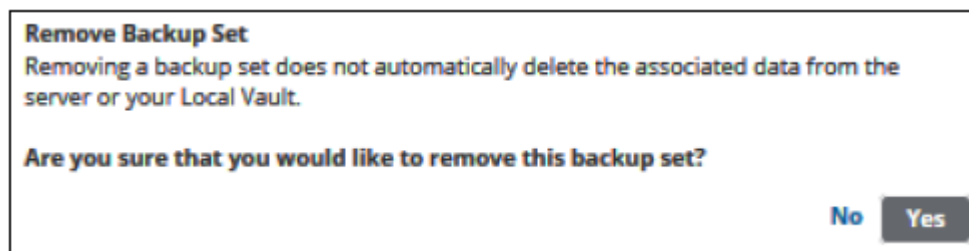
To remove an Exchange Mailbox Level backup set, perform the following steps.

1. Navigate to the Backup Selections page. See [Creating Exchange Mailbox Level Backups](#) for instructions.

The Backup Selections page is displayed.



2. At the relevant backup set row, click the remove icon  to remove the backup set. The confirmation pop-up is displayed.



3. Click **Yes**.  
The backup set is removed.

## Figures

1. image2019-7-24 12:27:53.png
2. image2019-7-24 12:28:42.png
3. image2019-7-24 12:29:31.png

© Barracuda Networks Inc., 2024 The information contained within this document is confidential and proprietary to Barracuda Networks Inc. No portion of this document may be copied, distributed, publicized or used for other than internal documentary purposes without the written consent of an official representative of Barracuda Networks Inc. All specifications are subject to change without notice. Barracuda Networks Inc. assumes no responsibility for any inaccuracies in this document. Barracuda Networks Inc. reserves the right to change, modify, transfer, or otherwise revise this publication without notice.