

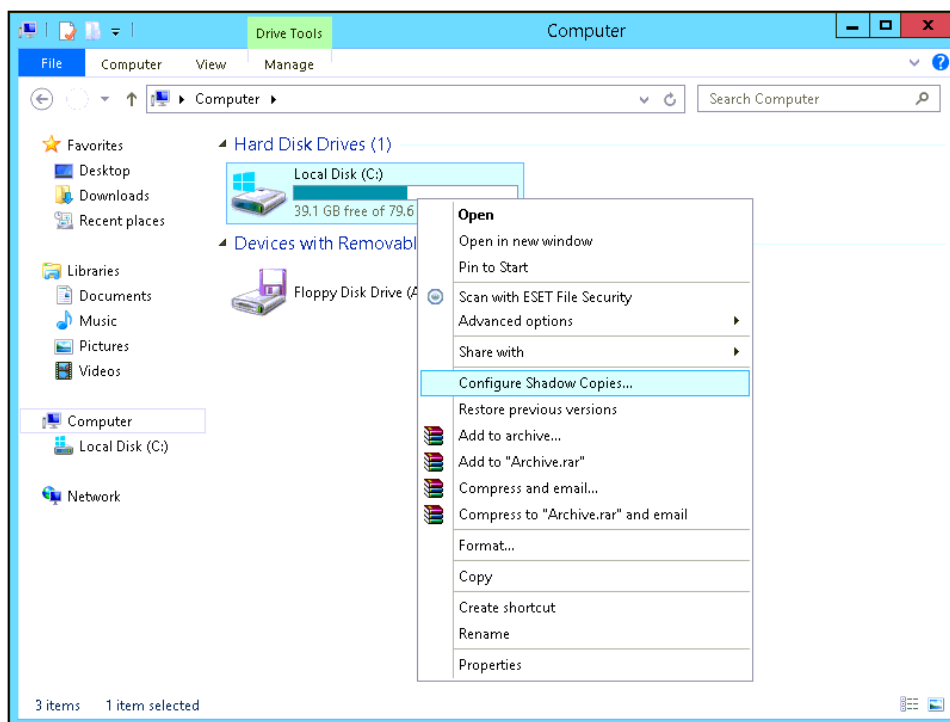
## Allocating Shadow Copy Storage Space

<https://campus.barracuda.com/doc/93197242/>

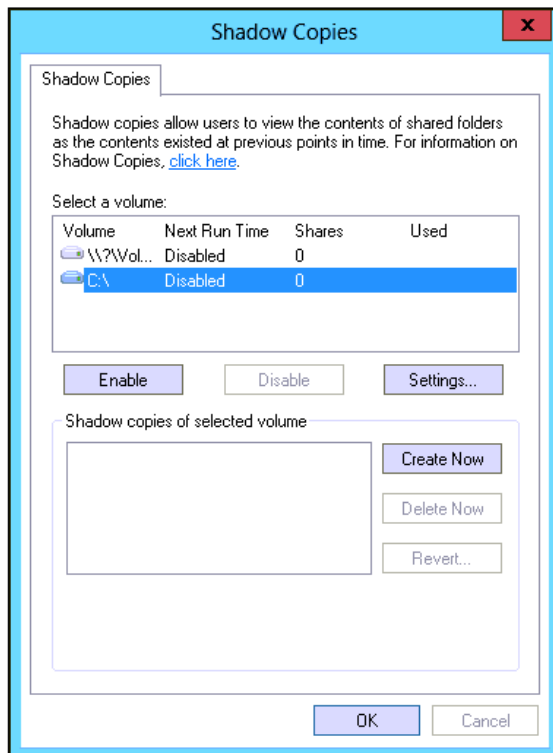
One of the requirements for successfully creating shadow copies of the volumes you intend to back up is having somewhere to put those shadow copies. If Microsoft's VSS is not given a place to put its shadow copies, shadow copy creation will fail. This article will outline the process for allocating shadow copy storage space for any volume you want to back up.

### Windows Server Machines

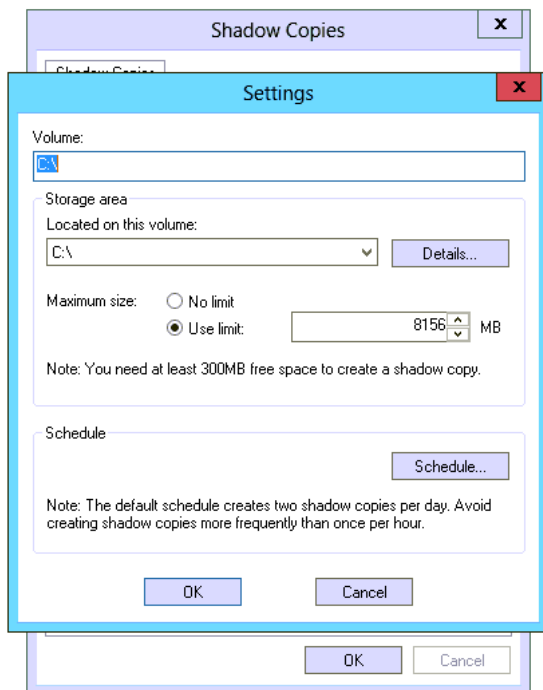
1. Go to **Start** and then **Computer** to bring up a Windows Explorer view of the system. You should see the hard drives belonging to the machine listed.



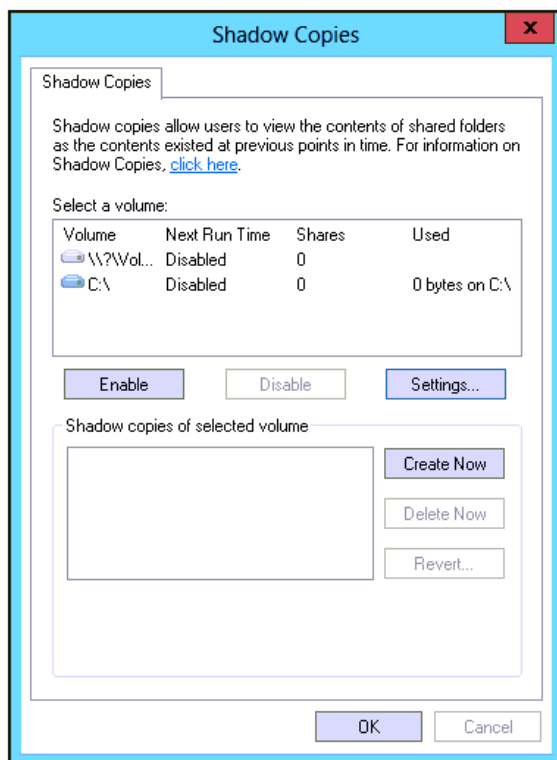
2. Left-click on any hard drive once to select it then right-click on that drive. Select **Configure Shadow Copies...** from the right-click menu. This should bring up the **Shadow Copies** window.
3. In the **Shadow Copies** window, notice how, if the **Used** field is blank, there is no storage space currently allocated. Click on the volume for which you want to allocate shadow copy storage and hit **Settings**.



4. In the **Settings** window, you can choose which volume the storage area will be put on as well as the maximum size of the storage area. It is recommended you keep the storage area on the same volume as the source as well as have a maximum storage area size of 10% of the source volume. If you believe you need more space, you can increase the size further or set the maximum size to "No limit," however, if shadow copies are being made automatically by Windows or by another program, this may lead to the drive filling up with shadow copies. Once you have configured it to your liking, hit **OK**.



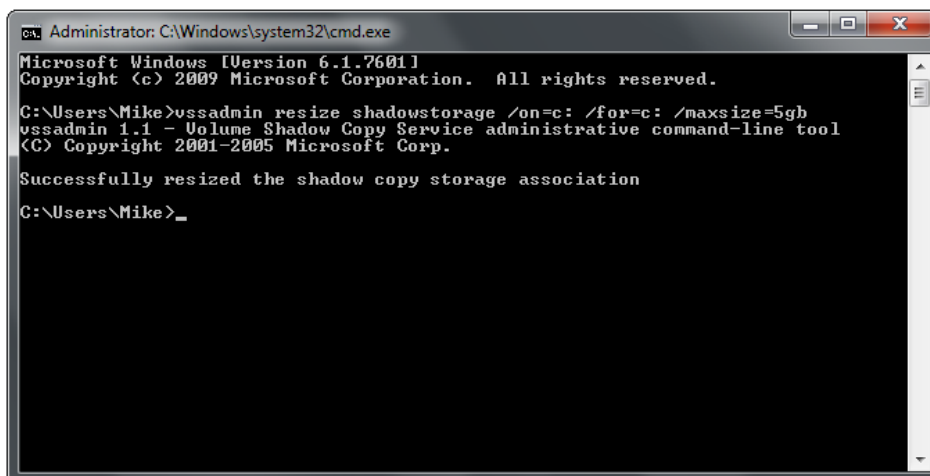
5. You should now see a "0 bytes on..." entry under the **Used** field. If you do, click on **OK** to finish the process.



## Windows Desktop Machines

1. Open an elevated command prompt window by using the combination Windows Key + R, typing cmd, and hitting the "Enter" key.
2. Use the following command to change the shadow copy storage area:  
`vssadmin resize shadowstorage /on=x: /for=x: /maxsize=20%`

The "/on" flag specifies where the shadow storage will be put, the "/for" flag is the source volume of the storage, and the "/maxsize" flag sets the maximum size for shadow storage area. More information on how to use this command [is here](#).



```
Administrator: C:\Windows\system32\cmd.exe
Microsoft Windows [Version 6.1.7601]
Copyright (c) 2009 Microsoft Corporation. All rights reserved.

C:\Users\Mike>vssadmin resize shadowstorage /on=c: /for=c: /maxsize=5gb
vssadmin 1.1 - Volume Shadow Copy Service administrative command-line tool
(C) Copyright 2001-2005 Microsoft Corp.

Successfully resized the shadow copy storage association
C:\Users\Mike>
```

### Figures

1. configureshadowcopies.png
2. shadowcopieswindownospace.png
3. shadowcopiessettings.png
4. shadowcopieswindowwithspace.png
5. vssadminresizestorage.png

© Barracuda Networks Inc., 2024 The information contained within this document is confidential and proprietary to Barracuda Networks Inc. No portion of this document may be copied, distributed, publicized or used for other than internal documentary purposes without the written consent of an official representative of Barracuda Networks Inc. All specifications are subject to change without notice. Barracuda Networks Inc. assumes no responsibility for any inaccuracies in this document. Barracuda Networks Inc. reserves the right to change, modify, transfer, or otherwise revise this publication without notice.