

Adding Missing Drivers

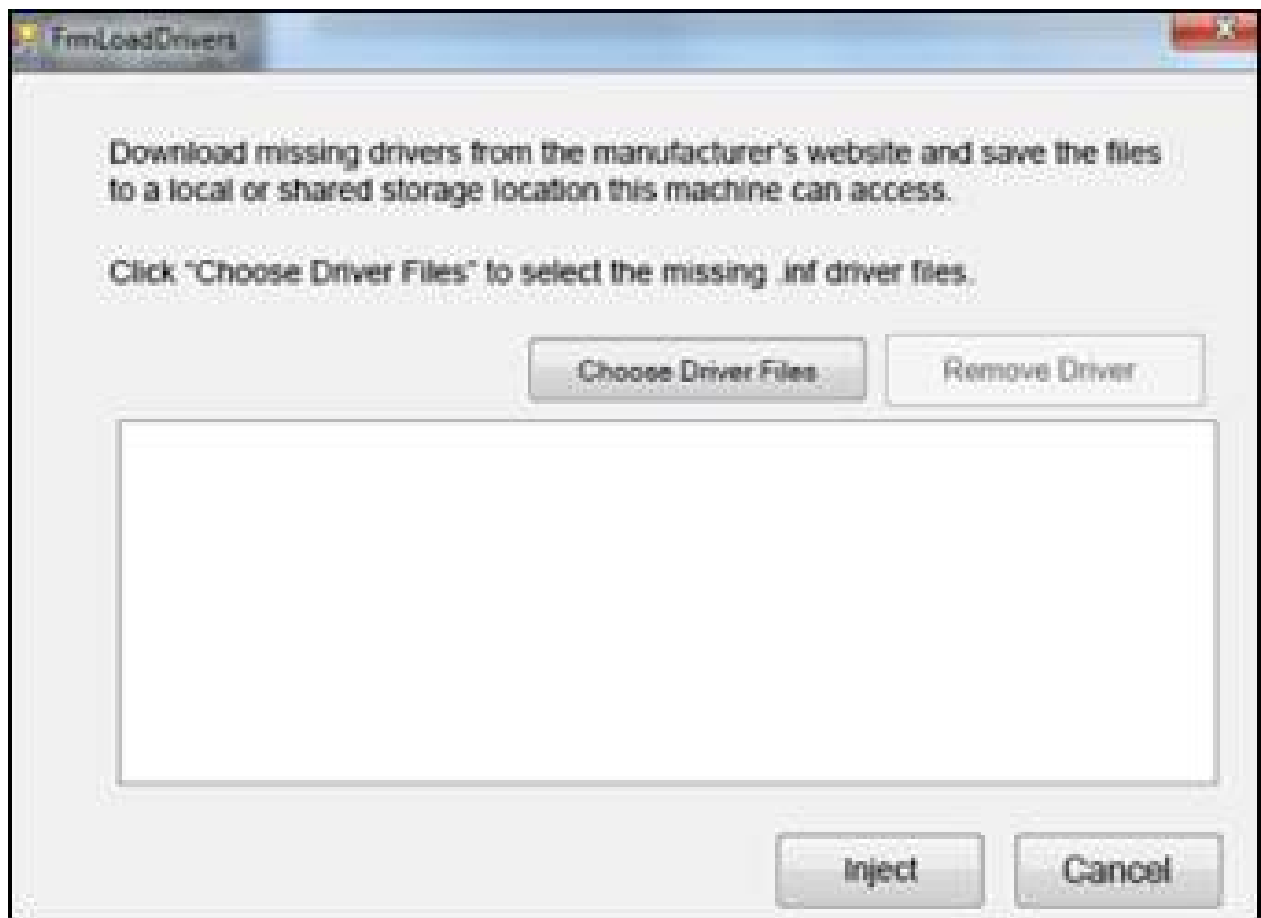
<https://campus.barracuda.com/doc/93197741/>

To add missing drivers, perform the following steps.

1. Boot the recovery machine from the disk or flash drive to start the recovery application. The **Start Recovery Wizard and Add Missing Drivers** screen is displayed.



2. If the machine does not boot because of a driver issue, after a BMR, click **Add Drivers to Recovered Machine**. The **Missing Drivers** screen is displayed.



3. Click the **Choose Driver Files** button, select missing drivers, and then click the **Inject** button. The drivers are added.

Figures

1. image176.jpg
2. image178.jpg

© Barracuda Networks Inc., 2024 The information contained within this document is confidential and proprietary to Barracuda Networks Inc. No portion of this document may be copied, distributed, publicized or used for other than internal documentary purposes without the written consent of an official representative of Barracuda Networks Inc. All specifications are subject to change without notice. Barracuda Networks Inc. assumes no responsibility for any inaccuracies in this document. Barracuda Networks Inc. reserves the right to change, modify, transfer, or otherwise revise this publication without notice.