

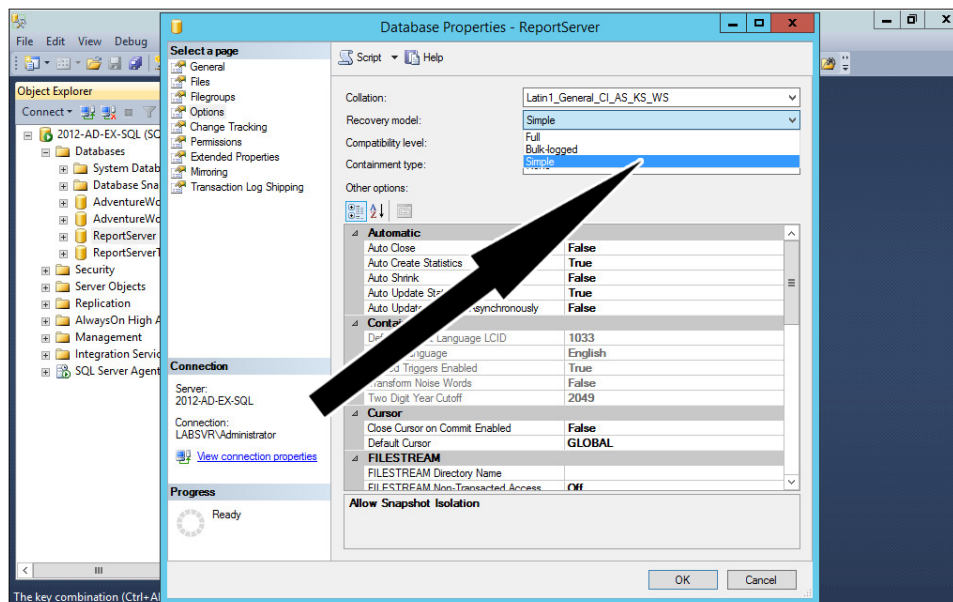
Setting a SQL Database to Simple Recovery Model

<https://campus.barracuda.com/doc/93198922/>

To set a SQL database to the Simple Recovery Model, perform the following steps.

Note: Having a database in this recovery model is required in order to take differential backups (instead of full backups).

1. Open SQL Server Management Studio.
2. Log into the SQL instance containing the database you want to back up.
3. Expand the **Databases** folder to show the database you want.
4. Right-click the database and select **Properties**.
5. In the **Properties** window, select the **Options** page on the left.



6. Change the **Recovery model:** field to **Simple** and click **OK** at the bottom.

Figures

1. `simplerecoverymodel.png`

© Barracuda Networks Inc., 2024 The information contained within this document is confidential and proprietary to Barracuda Networks Inc. No portion of this document may be copied, distributed, publicized or used for other than internal documentary purposes without the written consent of an official representative of Barracuda Networks Inc. All specifications are subject to change without notice. Barracuda Networks Inc. assumes no responsibility for any inaccuracies in this document. Barracuda Networks Inc. reserves the right to change, modify, transfer, or otherwise revise this publication without notice.