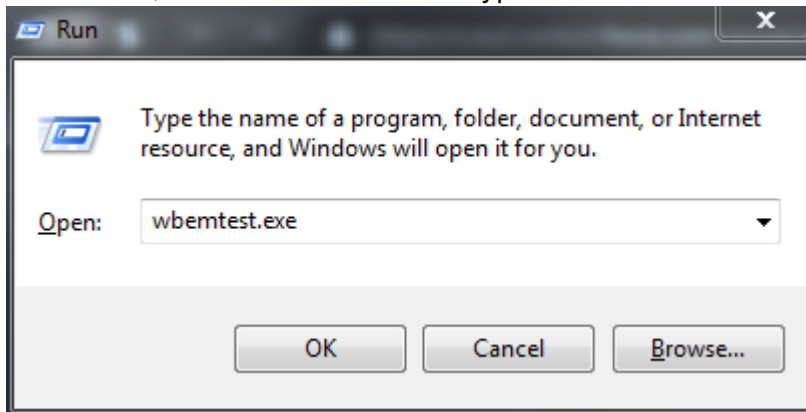


Create a Performance Counter for a custom WMI class

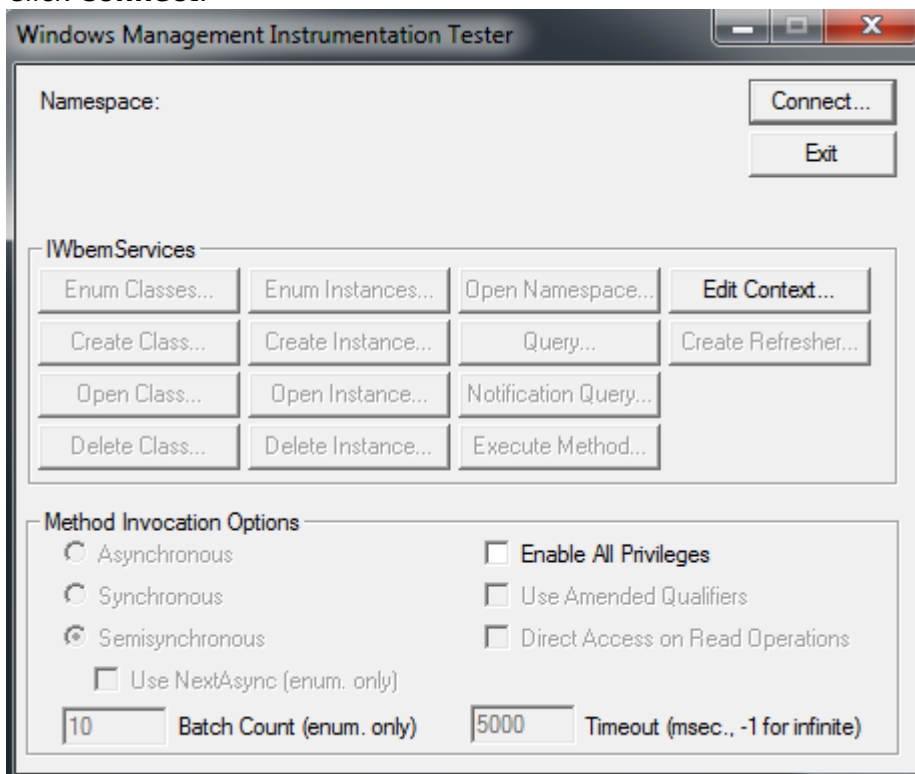
<https://campus.barracuda.com/doc/93201019/>

Please follow these steps to create a performance counter for a custom WMI class.

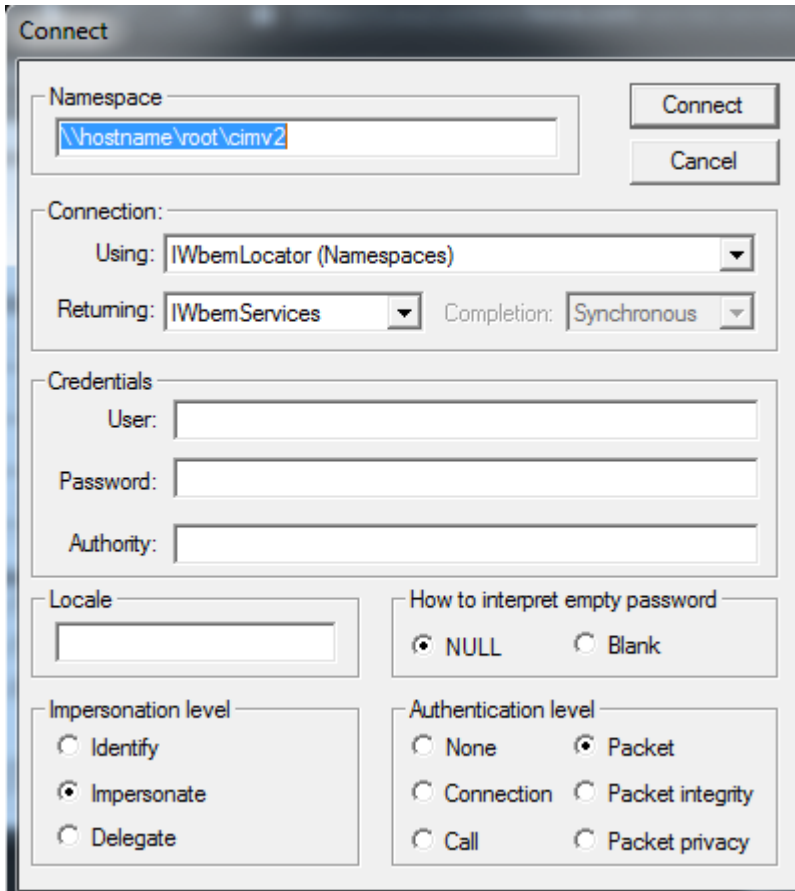
1. Click **Start**, then choose **RUN** and type in “wbemtest.exe”. Then press **ENTER**.



2. Click **Connect**.



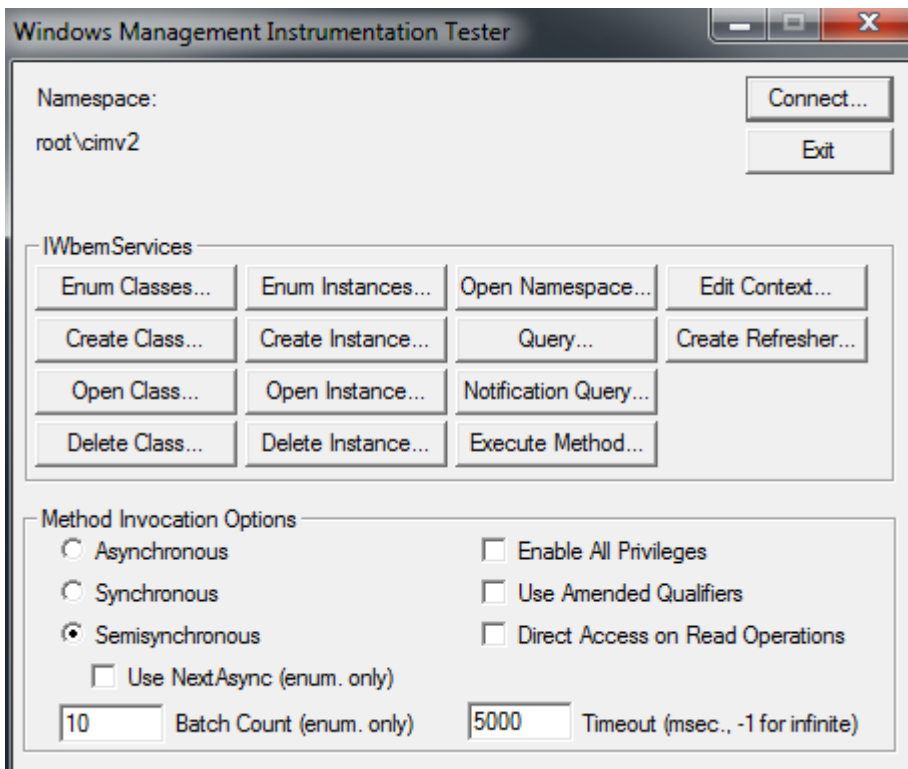
3. Connect to the namespace containing your WMI class. This will normally be `root\cimv2`. If you're connecting to a remote system, the namespace will look like a UNC path, eg. `\\hostname\root\cimv2`.
Enter an Administrator username and password if necessary, then click **Connect**.



The 'Connect' dialog box is used to establish a connection to a WMI namespace. It contains the following fields and options:

- Namespace:** A text box containing the path `\\hostname\root\cimv2`.
- Buttons:** 'Connect' and 'Cancel' buttons are located to the right of the namespace field.
- Connection:** A section containing:
 - Using:** A dropdown menu set to 'IWbemLocator (Namespaces)'.
 - Returning:** A dropdown menu set to 'IWbemServices'.
 - Completion:** A dropdown menu set to 'Synchronous'.
- Credentials:** Three text boxes for 'User:', 'Password:', and 'Authority:'.
- Locale:** A text box for specifying the locale.
- How to interpret empty password:** Two radio buttons: 'NULL' (selected) and 'Blank'.
- Impersonation level:** Three radio buttons: 'Identify', 'Impersonate' (selected), and 'Delegate'.
- Authentication level:** Six radio buttons: 'None', 'Packet' (selected), 'Connection', 'Packet integrity', 'Call', and 'Packet privacy'.

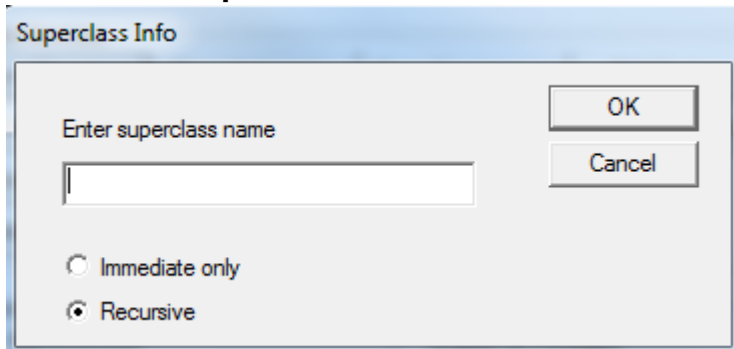
4. Click **Enum Classes...**



The 'Windows Management Instrumentation Tester' dialog box provides a comprehensive interface for interacting with WMI. It includes the following elements:

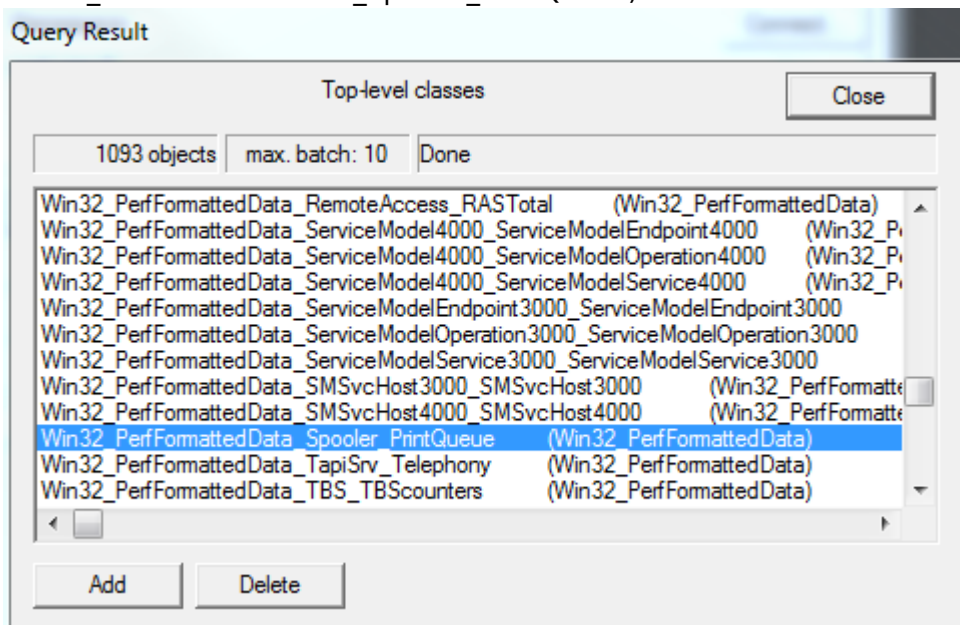
- Namespace:** A text box containing 'root\cimv2' and a 'Connect...' button.
- Buttons:** An 'Exit' button is located below the namespace field.
- IWbemServices:** A grid of buttons for various operations:
 - Enum Classes... (highlighted)
 - Enum Instances...
 - Open Namespace...
 - Edit Context...
 - Create Class...
 - Create Instance...
 - Query...
 - Create Refresher...
 - Open Class...
 - Open Instance...
 - Notification Query...
 - Delete Class...
 - Delete Instance...
 - Execute Method...
- Method Invocation Options:** A section with several options:
 - Radio buttons for 'Asynchronous', 'Synchronous', and 'Semisynchronous' (selected).
 - Checkbox for 'Use Next.Async (enum. only)'.
 - Checkbox for 'Enable All Privileges'.
 - Checkbox for 'Use Amended Qualifiers'.
 - Checkbox for 'Direct Access on Read Operations'.
 - Input boxes for 'Batch Count (enum. only)' (value: 10) and 'Timeout (msec., -1 for infinite)' (value: 5000).

5. Leave **Enter Superclass Name** blank, select **Recursive** and click **OK**.

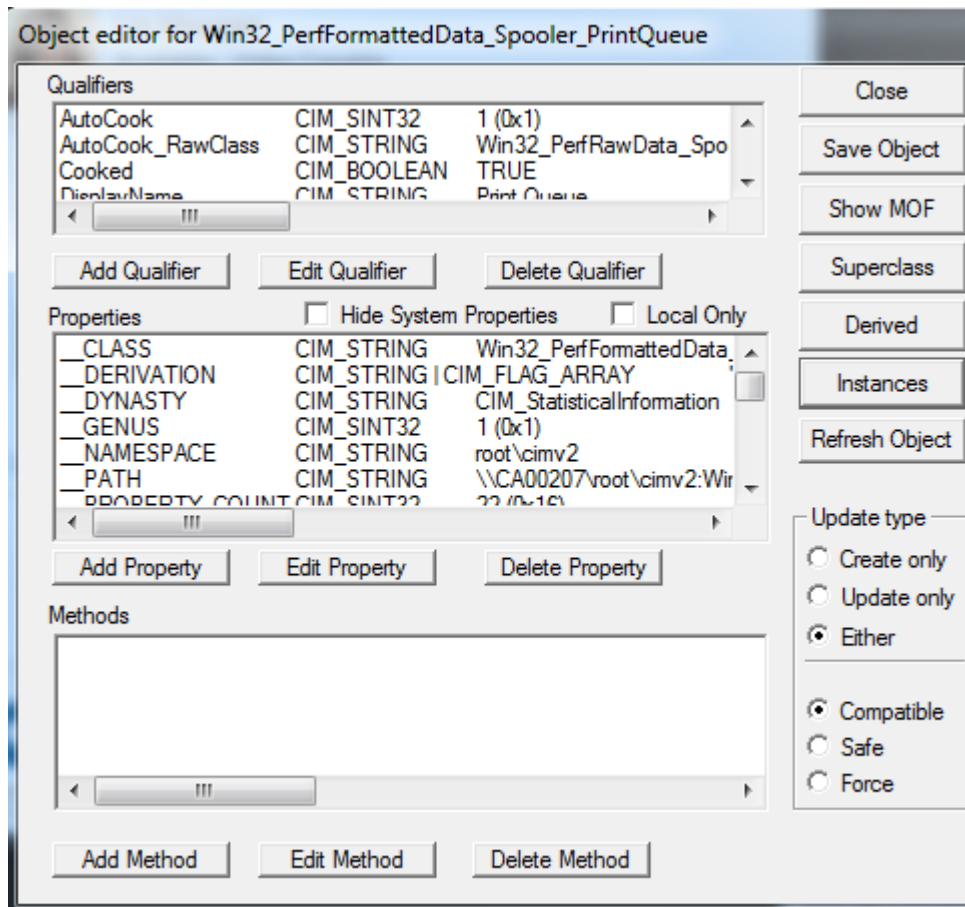


A **Query Result** window opens with a full list of WMI classes in that namespace.

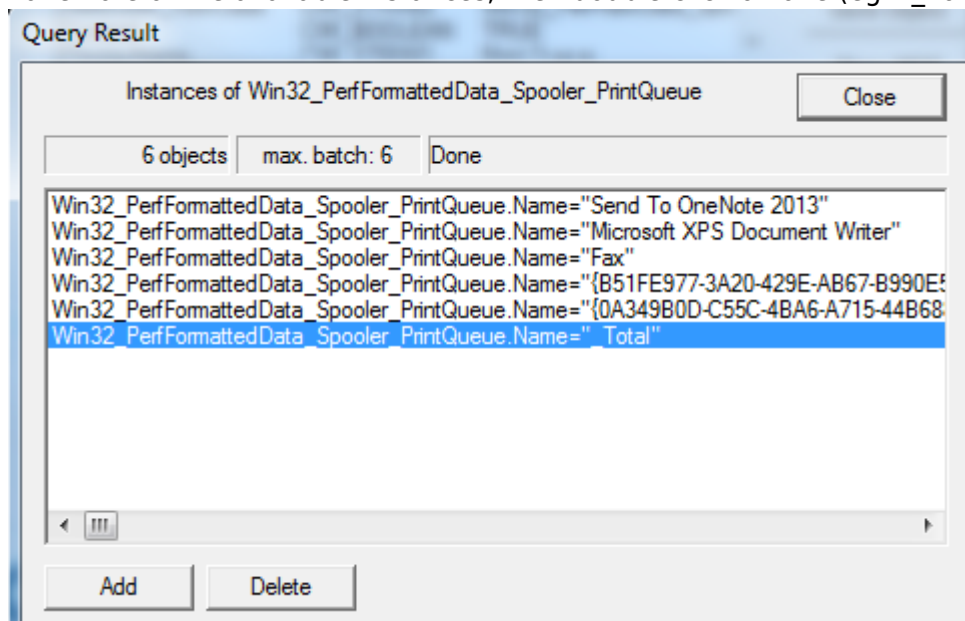
6. Scroll through the list until you find a relevant class. Take note of the class name (eg. Win32_PerfFormattedData_Spooler_PrintQueue)



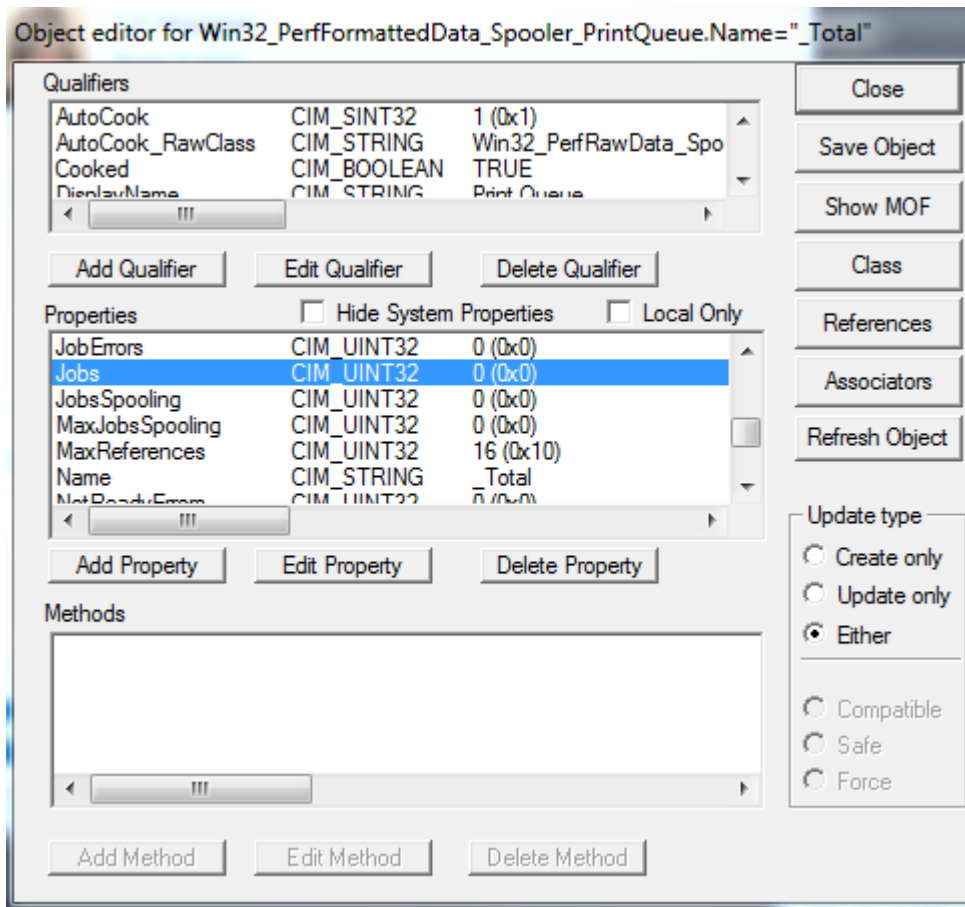
7. Click **Instances** to find out which instances exist.



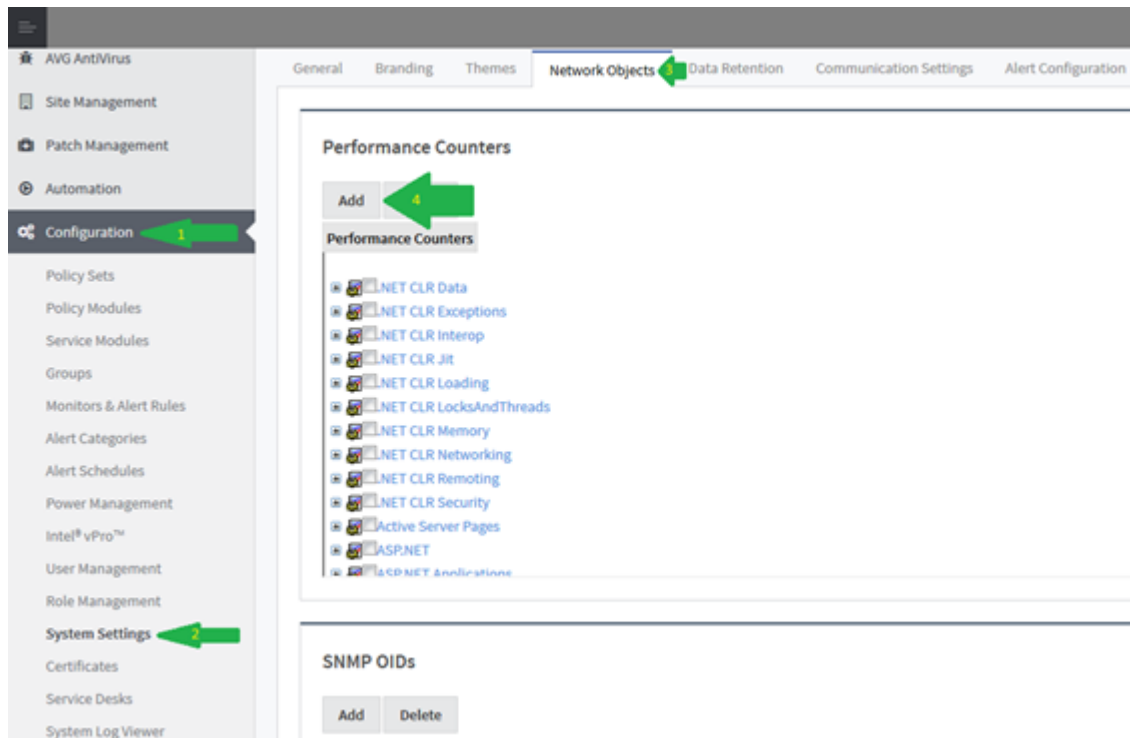
8. Take note of the available instances, then double-click on one (eg. "_Total")



9. Find the property you want to monitor, and take note of its name.



10. Open your Service Center, and go to **System Settings** under **Configuration**.
11. Click the **Network Objects** tab, and under **Performance Counters**, click **Add**.



12. Check the **Other** box for each field, and fill out the form with the information you've gathered. **Performance Object** and **Instance Counter** can be whatever you want to name them and **Object Instance** is optional, but **WMI Class Name** and **WMI Property Name** are required.

Add Performance Counter

Performance Object:

.NET CLR Data

Other **Print Jobs**

Object Instance:

N/A

Other **_Total**

Instance Counter:

Bytes in all Heaps

Other **Current Jobs**

WMI Class Name

(Not provided)

Other **Win32_PerfFormattedData_Spooler_PrintQueue**

WMI Property Name

(Not provided)

Other **Jobs**

13. Click **Save**.

Figures

1. clipboard_e61a2c027d9ad44b290c71d35502ac655.png
2. clipboard_ef3dbad722c6f742be0796198d520fc27.png
3. clipboard_e19c88b7a8f7433df4c5496ddd750b315.png
4. clipboard_e44c8091a924dd674e3244408b91c4ff3.png
5. clipboard_edbbf3c43ca5d12f9e4bedfc25d4cc046.png
6. clipboard_e593bb5898b8430a7974f24a93c2b96b5.png
7. clipboard_e9789db3e8279fa58b0ab79e456c66a93.png
8. clipboard_e64a57f52fc520805576c3abf408e2165.png
9. clipboard_eb8ca5907277b2f9021c06ec367f853a1.png
10. clipboard_ed7f5e7e6b460bb285db3fd0869efbaa8.png
11. clipboard_ed7dc2180a5f51407f74a20ec62e5b806.png

© Barracuda Networks Inc., 2022 The information contained within this document is confidential and proprietary to Barracuda Networks Inc. No portion of this document may be copied, distributed, publicized or used for other than internal documentary purposes without the written consent of an official representative of Barracuda Networks Inc. All specifications are subject to change without notice. Barracuda Networks Inc. assumes no responsibility for any inaccuracies in this document. Barracuda Networks Inc. reserves the right to change, modify, transfer, or otherwise revise this publication without notice.