

---

## Barracuda Firewall Admin

<https://campus.barracuda.com/doc/95259102/>

Barracuda Firewall Admin is a stand-alone Microsoft Windows application used to administer CloudGen Firewalls, Secure Connectors, and Control Centers. Unlike web-based administration portals, Firewall Admin lets you manage multiple firewalls from a single interface that remains independent from web browser incompatibilities. Firewall Admin is backward-compatible to firmware version 5.2, allowing you to always use the latest Firewall Admin even if you are managing older firmware releases.

### Download Firewall Admin

---

Barracuda Firewall Admin can be downloaded directly from the [Barracuda web portal](#).

### System Requirements

---

- Windows 10
- Microsoft .NET Framework 4.6 or higher
- 50 MB free disk space
- 1 GB RAM
- 1 GHz CPU

### Connecting to a CloudGen Firewall or Firewall Control Center

---

1. Start Barracuda Firewall Admin.
2. In the **New Session** tab, select the login type:
  - **Firewall** - Select **Firewall** to connect to a CloudGen Firewall or the box layer of a Firewall Control Center.
  - **Control Center** - Select **Control Center** to log into the Firewall Control Center.
  - **SSH** - Select **SSH** to open an ssh connection to the box layer of the Control Center or CloudGen Firewall.
3. Enter the **IP Address / Name**. This is either an IPv4 or IPv6 management IP address or a hostname resolving to a management IP address.
4. Enter the login credentials. The default values for all hardware and virtual Barracuda CloudGen Firewall units and Firewall Control Center are:
  - **Username** - root
  - **Password** - ngf1r3wall

## Barracuda CloudGen Firewall

Firewall  Control Center  SSH

IP Address / Name

Username

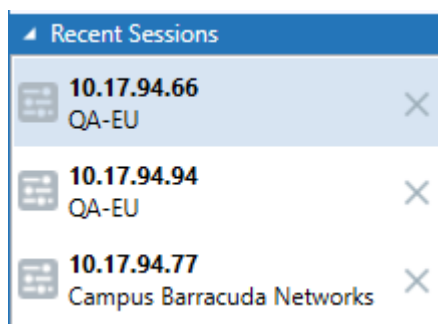
Password

The default password is intended for initial access only. You must change the password once you are logged into the CloudGen Firewall. For more information, see [How to Change the Root Password and Management ACL](#).

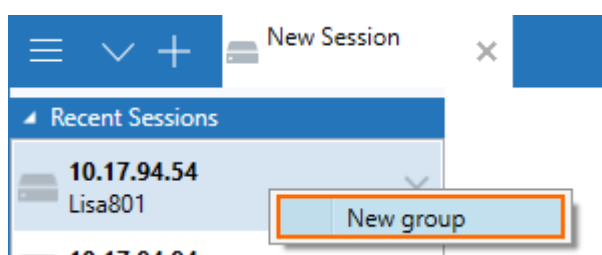
5. Click **Sign In**.

### Recent Connections

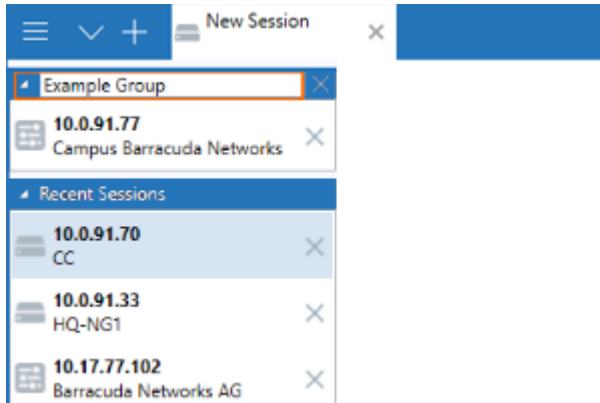
To simplify access, and for informational purposes, Barracuda Firewall Admin automatically stores box names and IP addresses of recently established Firewall Admin sessions in the **Recent Sessions** list. All connections are listed in the menu bar on the top left of the page.



To arrange Firewall Admin sessions in groups, right-click a session in the list and select **New Group**.



Enter a descriptive name in the header field.



To add a session to the group, drag it into the group list. You can expand and collapse the group view by clicking the arrow icon in the left corner of the header field. To remove a session from the group, click the **X** icon, or right-click the entry and select **Recent Sessions**. To remove a group from the list, click the **X** icon next to the group header field. After a group has been deleted, all sessions are moved back to the **Recent Sessions** list.

To change a host entry in the **Recent Sessions** list on a CloudGen Firewall:

1. Go to **CONFIGURATION > Configuration Tree > Box > Network**.
2. In the left menu, expand the **Configuration Mode** section and click **Advanced View**.
3. In the left menu, select **IP configuration**.
4. Click **Lock**.
5. Change the **Hostname**.
6. Click **Send Changes** and **Activate**.
7. Perform a Failsafe network activation. For more information, see [How to Activate Network Changes](#).

To change a host entry on a Control Center:

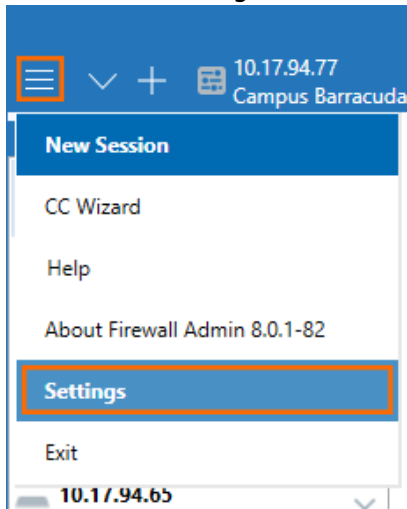
1. Go to **CONFIGURATION > Configuration Tree > Multi-Range > Global Settings > CC Identity**.
2. In the left menu, select **Identification**.
3. Change the **Organization**.
4. Click **Send Changes** and **Activate**.

If you want to remove a connection from the list, click the **X** icon next to the entry.

### Changing Display Settings

If you do not want IP addresses or other details of recent connections to be visible in the **Recent Sessions** list, adjust the client settings:

1. Click the hamburger menu on the top left of the window.

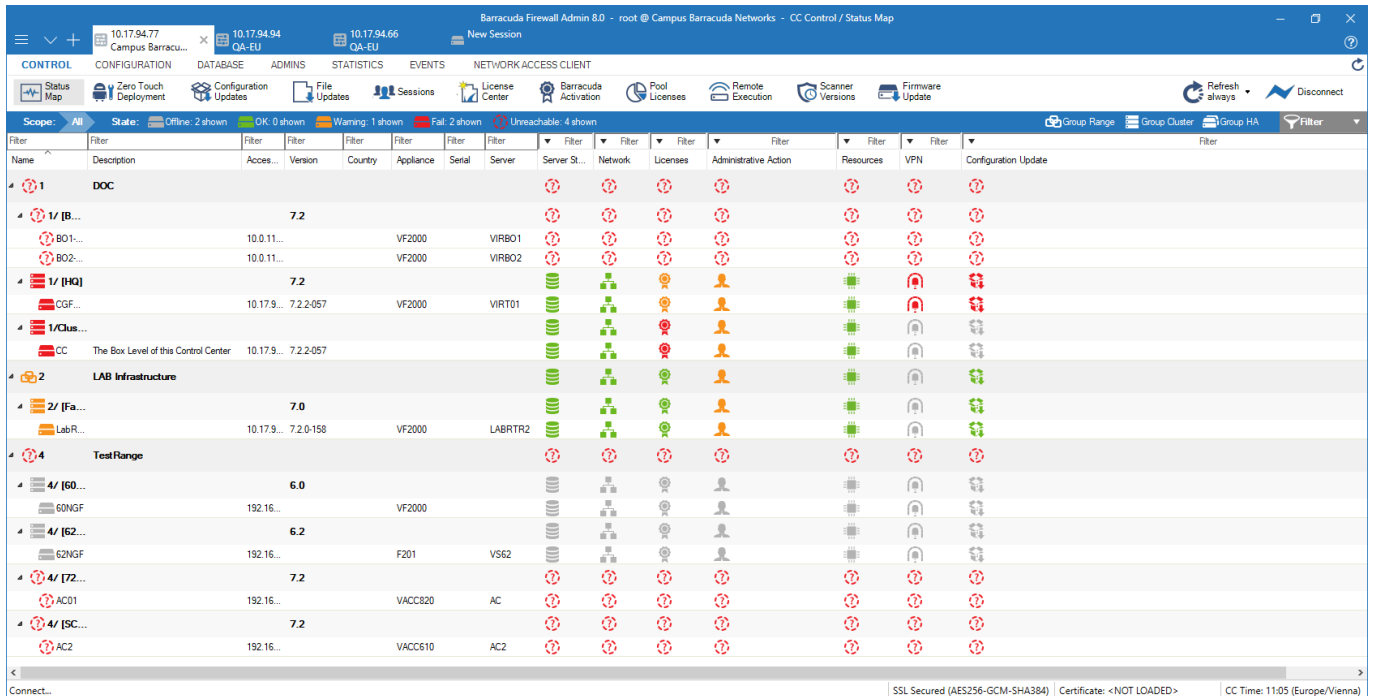


2. Go to **Settings > Client Settings**.
3. In the **Log in** section, select or clear the following check boxes:
  - **Save session information** - Enables/disables information to be displayed in the **Recent Sessions** list.
  - **Save user name** - Enables/disables user details to be displayed.

## User Interface

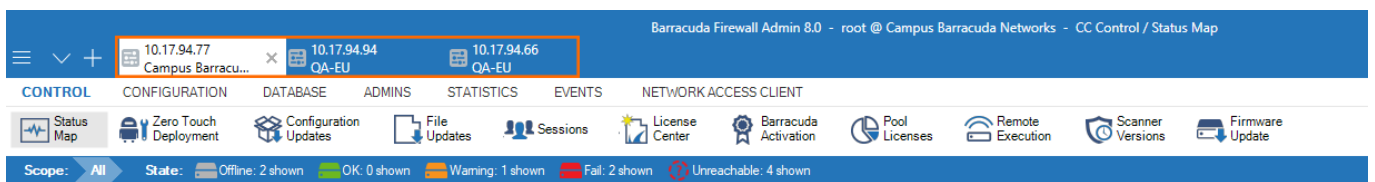
---

The Firewall Admin user interface is divided into several functional sections. Although the content on a CloudGen Firewall differs from the Firewall Control Center, position and basic functions are identical. The following screenshot shows the Firewall Admin application connected to a Control Center:



## Box Tabs

A tab above the ribbon bar is created for each CloudGen Firewall or Control Center you are logged into. You can log into a single system multiple times. You can also reorganize the tabs by dragging them.



The tab for the selected unit is always highlighted. Clicking open tabs allows you to switch between connected units.

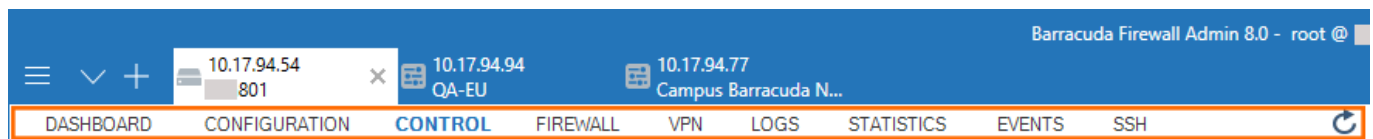
Click the hamburger menu on the top left to access the Firewall Admin settings menu, where you can configure general settings for the Firewall Admin application, such as the behavior of connections and configuration elements.



For more information, see [Barracuda Firewall Admin Settings](#).

## Service Bar

The service bar is the main navigation and operation utility of the user interface and provides a tab for each main section of the CloudGen Firewall or Control Center. Additional services introduced on the Firewall Firewall CloudGen, like VPN, add further tabs to this bar from where you can access settings and sub-sections, depending on the configured service.

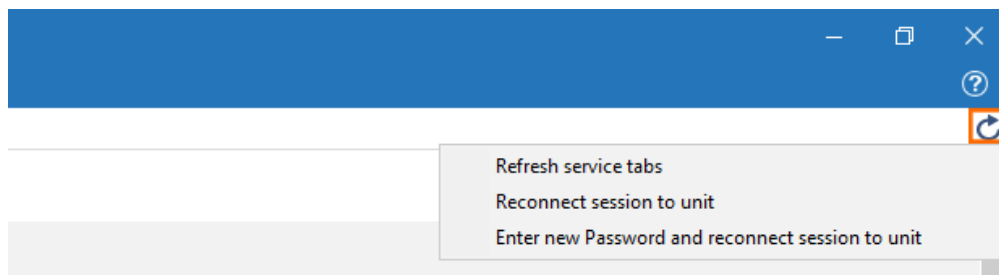


On the CloudGen Firewall, the Firewall Admin interface service bar contains the following tabs:

- **DASHBOARD** – Provides a general system overview of your CloudGen Firewall or Firewall Control Center (box level). For more information, see [DASHBOARD Tab](#).
- **CONFIGURATION** – Contains the operative configuration tree for the CloudGen Firewall or Control Center. For more information, see [CONFIGURATION Tab](#).
- **CONTROL** – Shows information about services, current network status, running processes, system and license status. For more information, see [CONTROL Tab](#).
- **FIREWALL** – Provides real-time and historical information on network traffic and application traffic passing the CloudGen Firewall. For more information, see [FIREWALL Tab](#).
- **DHCP** – Shows DHCP leases and reservations. For more information, see [DHCP Tab](#).
- **NETWORK ACCESS CLIENT** – Shows information from all connected NAC clients and the Access Control Service. For more information, see [Barracuda Network Access and VPN Client](#).
- **VPN** – Provides access to VPN real-time information for site-to-site and client-to-site VPN connections, if configured. For more information, see [VPN Tab](#).
- **PROXY** – For more information, see [PROXY Tab](#).
- **LOGS** – Contains information related to system and service logs. For more information, see [LOGS Tab](#)
- **STATISTICS** – Contains information related to statistics generated on the Barracuda CloudGen Firewall. For more information, see [STATISTICS Tab](#).
- **EVENTS** – Contains information related to events that are created on the Barracuda CloudGen Firewall. For more information, see [EVENTS Tab](#).
- **SSH** – Provides the login to the command line interface of the CloudGen Firewall. For more information, see [SSH Tab](#) and [Command-Line Interface](#).

Right-click the **Refresh** icon on the top right to access the context menu with the following options:

- **Refresh service tabs** – Reloads the Firewall Admin interface.
- **Reconnect session to unit** – Reconnects the Firewall Admin session.
- **Enter new Password and reconnect session to unit** – Reconnects the Firewall Admin session using a login password.

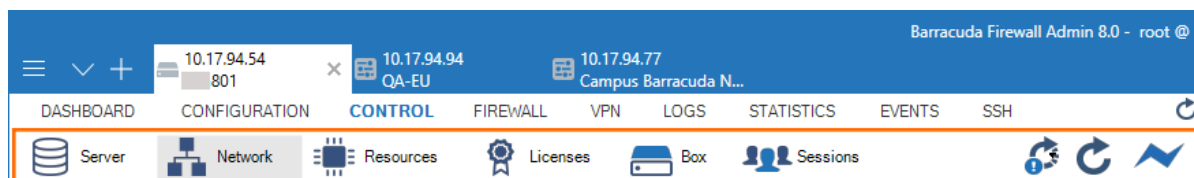


On the Firewall Control Center, the Firewall Admin interface service bar contains the following tabs:

- **CONTROL** – Provides an overview of all connected units on the Firewall Control Center. For more information, see [CC CONTROL Tab](#).
- **CONFIGURATION** – Contains the configuration sections for the Firewall Control Center. For more information, see [CC CONFIGURATION Tab](#).
- **DATABASE** – Provides details and quick access to available ranges, clusters, boxes, and services of the Firewall Control Center. For more information, see [CC DATABASE Tab](#).
- **ADMINS** – Provides access to the section for the administrator's list. For more information, see [CC ADMINS Tab](#).
- **STATISTICS, EVENTS** – These tabs contain pages related to logs, statistics, and events.
- **NETWORK ACCESS CLIENT** – Shows information from all connected NAC clients and the Access Control Service. For more information, see [Barracuda Network Access and VPN Client](#).
- **FWAUDIT** – Provides access to the section for the Firewall Audit service. For more information, see [CC FWAUDIT Tab](#).

## Ribbon Bar

Located directly under the service bar, the ribbon bar provides icons for each section relevant to the selected service bar tab. To access a section, open a tab in the service bar and select an icon from the ribbon bar to open the corresponding settings page. In some cases, you might have to expand the icons section in the ribbon bar to gain access to all sections.



In the top-right corner, the ribbon bar provides icons to specify system refresh settings. Clicking the last icon disconnects the unit. When disconnected, this icon changes to **Connect**.

## Main Window

---

The main window contains the configuration and information part of Firewall Admin. Depending on the tabs and icons selected from the service and ribbon bars, the main window displays information that is relevant to the selected item and might also contain further tabs and subsections.

## Context Menu

---

For entries and items displayed on a page, Barracuda Firewall Admin provides a corresponding context menu. The options available when right-clicking an entry depend on the entry. The following settings are standard and included on nearly all of the pages:

- **Show grouped** - Groups the list entries according to the amount of transports.
- **Show Filter** - Groups the list entries according to the amount of transports.
- **Find** - Groups the list entries according to the amount of transports.
- **Select All** - Selects and highlights all entries on the list.
- **Deselect All** - Deselects all entries on the list.
- **Expand /Collapse All** - Expands / collapses all entries on the list.
- **Print List** - Sends the list to a printer.
- **Columns** - Opens a context menu that allows customization of the list view.

## Status Bar

---

The status bar at the bottom of the Firewall Admin user interface displays information about the certificate status, the SSL connection, and the time zone specified within the box time settings.

Connected to 2001:db8:10:10::77 (v 7.0.0-664)	SSL Secured (AES256-GCM-SHA384)	Certificate: <NOT LOADED>	CC Time: 09:24 (Europe/Vienna)
---	---------------------------------	---------------------------	--------------------------------

## Barracuda CloudGen Firewall Configuration

---

On the **CONFIGURATION** page, you can configure all settings and services of the CloudGen Firewall or Firewall Control Center. The config tree contains all configuration sections, listed in hierarchical levels, from where you can add and access firewall services, and, if on a Firewall Control Center, create and configure ranges and clusters, and add your CloudGen Firewalls. For more information, see [CONFIGURATION Tab](#).



## **Switching from the Web Interface to Firewall Admin**

Hardware firewalls using the web interface as the default management interface can use Firewall Admin in monitor mode with a read-only configuration. Alternatively, you can also disable the web interface and use Firewall Admin to manage the firewall configuration.

For more information, see [How to Use Barracuda Firewall Admin in Monitor Mode](#) and [How to Switch from the Web Interface to Barracuda Firewall Admin](#).

## Figures

1. login.png
2. recent.png
3. activate\_now.png
4. group\_01.png
5. menu.png
6. fwadmin\_ui.png
7. cc\_box\_tabs.png
8. menu1.png
9. service\_bar.png
10. refresh.png
11. ribbon\_bar.png
12. status\_bar.png

© Barracuda Networks Inc., 2022 The information contained within this document is confidential and proprietary to Barracuda Networks Inc. No portion of this document may be copied, distributed, publicized or used for other than internal documentary purposes without the written consent of an official representative of Barracuda Networks Inc. All specifications are subject to change without notice. Barracuda Networks Inc. assumes no responsibility for any inaccuracies in this document. Barracuda Networks Inc. reserves the right to change, modify, transfer, or otherwise revise this publication without notice.