

How to Export a Root Certificate From Windows Server 2008 or 2012

<https://campus.barracuda.com/doc/95259622/>

If you are using LDAPS authentication, you must export an LDAPS certificate from your Windows Server to upload the Barracuda Web Security Gateway. You configure the **LDAP Port** with the port number on which the server listens for LDAP (636 for LDAPS) connections, on the **USERS/GROUPS > Authentication** page of the Barracuda Web Security Gateway web interface.

You must [install AD CS on the Windows Server](#) before exporting the certificate.

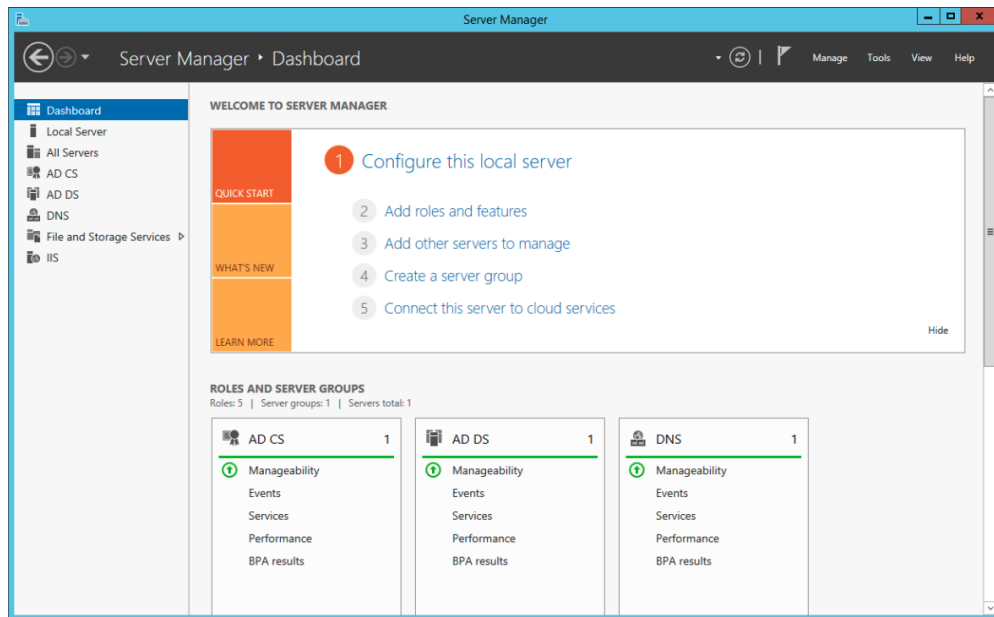
After you export the certificate from your Windows Server, follow instructions for uploading the certificate to your Barracuda Web Security Gateway in [How to Enable LDAP Domain User Authentication](#).

To export a root certificate from your Windows Server 2008:

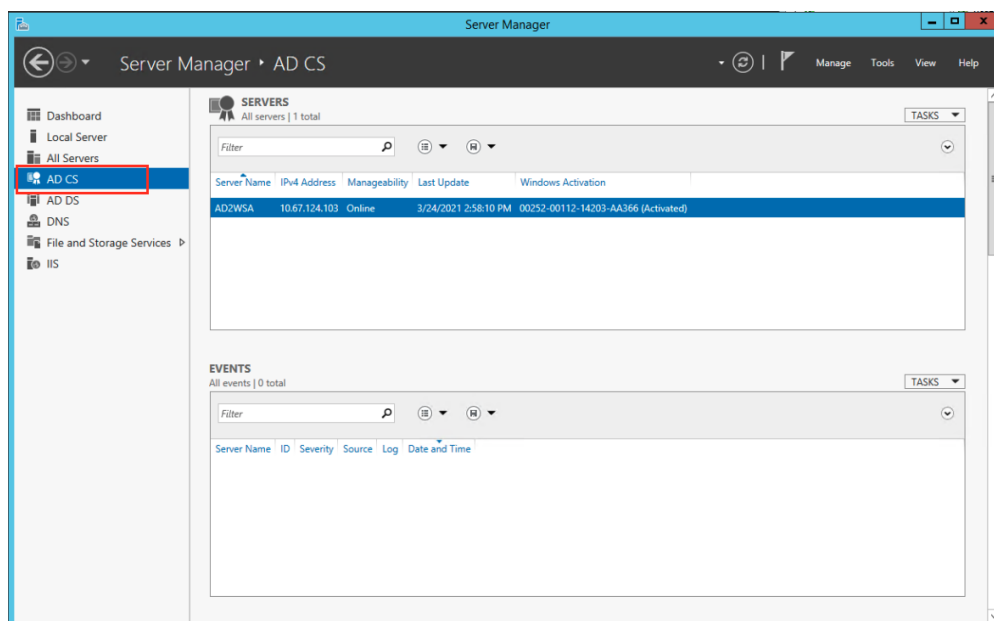
1. Launch Server Manager.
2. Go to **Roles > Active Directory Certificate Services**.
3. Right click on the domain that is associated with your domain and select **Properties**. Typically this would be the root certificate.
4. Under the **General** tab, note the box that lists all available certificates that have been created for the domain.
5. Select **certificate** and click **View Certificate**.
6. Click **Details**.
7. Click **Copy to File...**
8. Go through the wizard.
9. Use **Base-64 encoded X.509 (.CER)**
10. Enter the file name and location where you want to save the certificate.
11. Click **Next**.
12. Click **Finish**.

To export a root certificate from your Windows Server 2012:

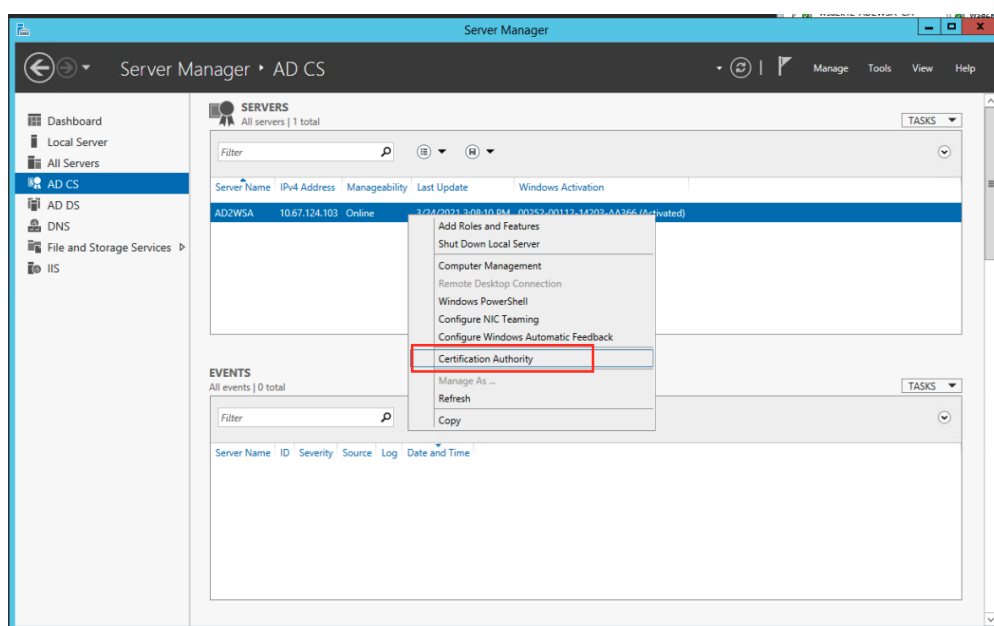
1. Launch Server Manager.



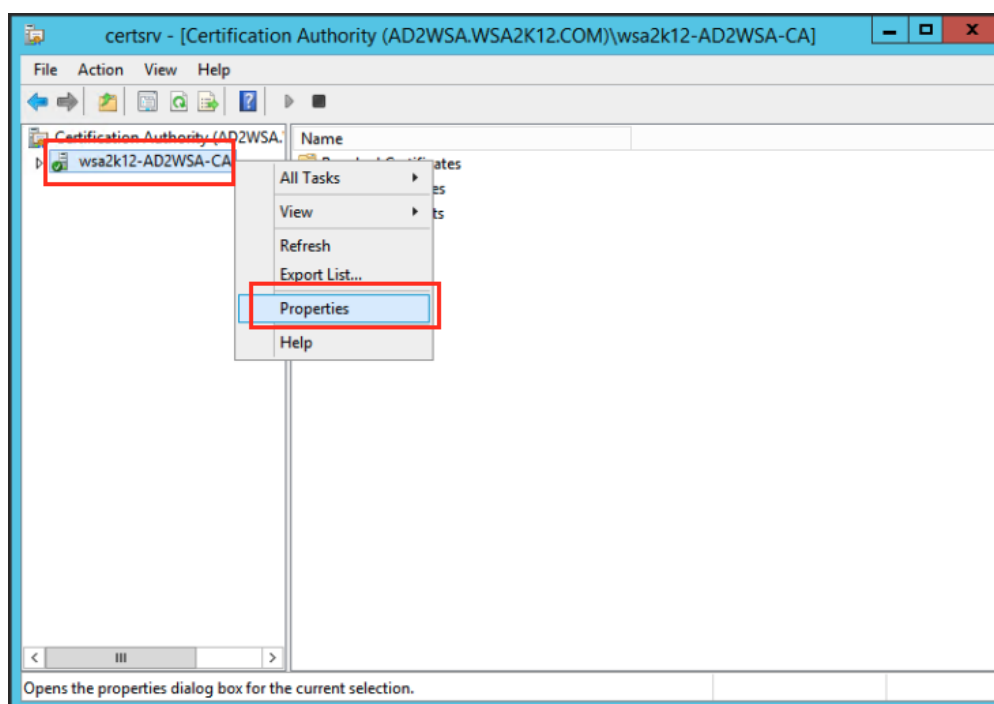
2. Go to **AD CS**.



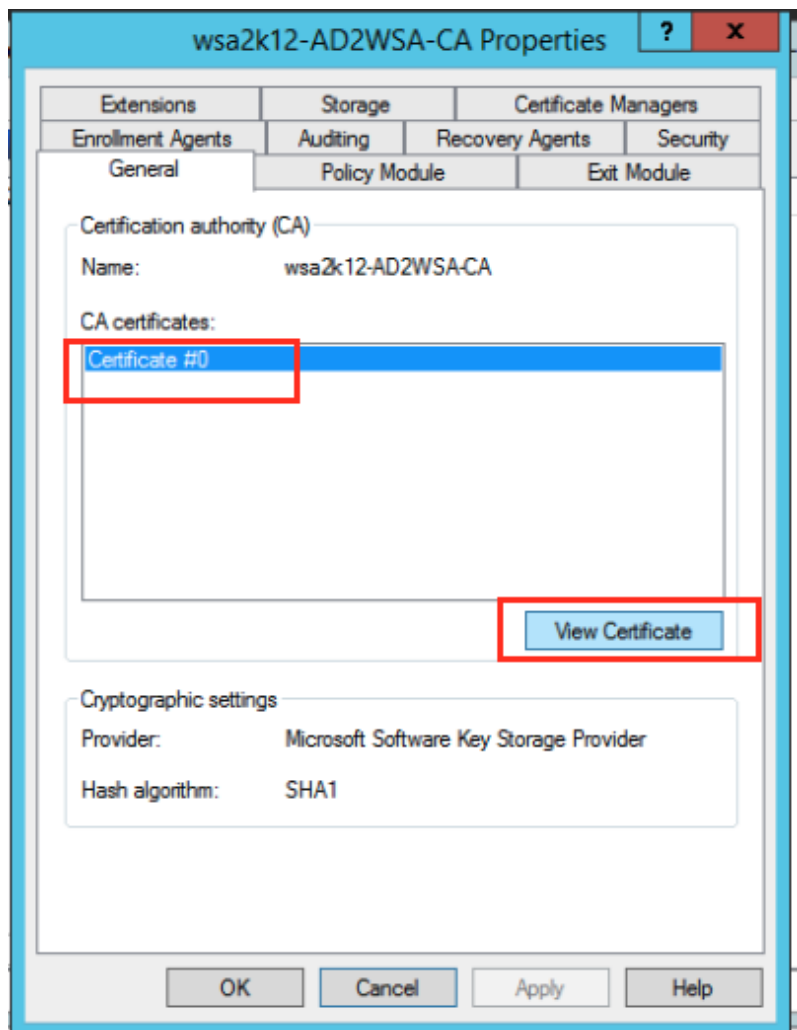
3. Right click on server where Certificate exists on and select **Certificate Authority**.



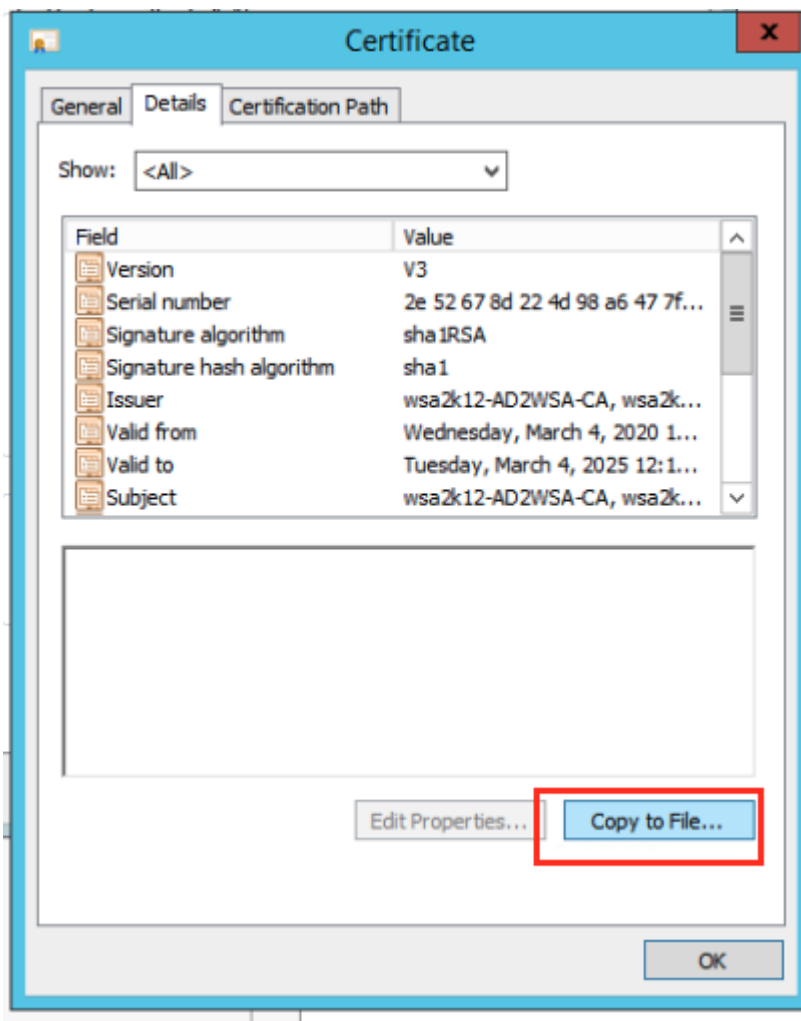
4. Right Click on the root certificate and click **Properties**.



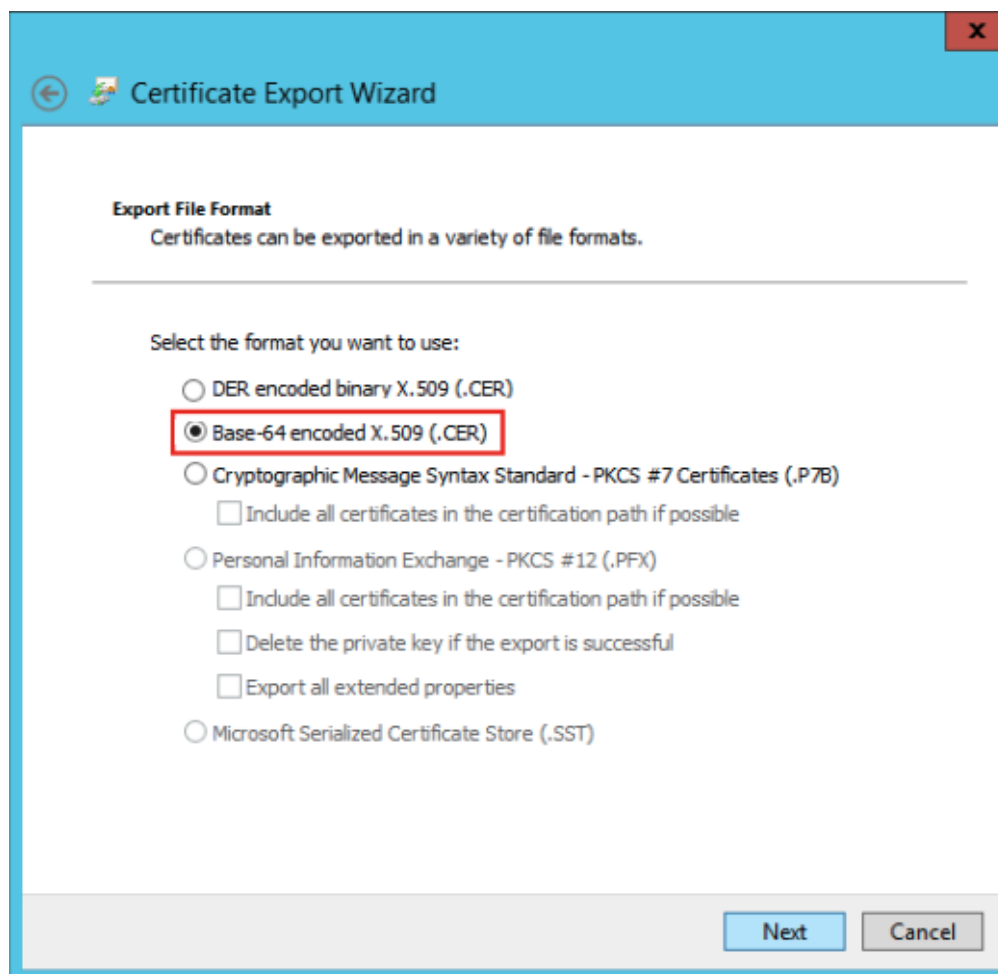
5. Under the **General** tab, note the box that lists all available certificates that have been created for the domain. Select the certificate to export and click **View Certificate**.



6. Click the **Details** tab.
7. Click **Copy to File..**



8. Go through the wizard.
9. When asked for the file format, use **Base-64 encoded X.509 (.CER)**



10. Enter the file name and location where you want to save the certificate.
11. Click **Next**.
12. Click **Finish**.

Figures

1. LaunchServerMgr.png
2. AD_CS.png
3. SelectCertAuthority.png
4. ClickProperties.png
5. SelectCertificate.png
6. CopyToFile.png
7. CertExportWizard.png

© Barracuda Networks Inc., 2024 The information contained within this document is confidential and proprietary to Barracuda Networks Inc. No portion of this document may be copied, distributed, publicized or used for other than internal documentary purposes without the written consent of an official representative of Barracuda Networks Inc. All specifications are subject to change without notice. Barracuda Networks Inc. assumes no responsibility for any inaccuracies in this document. Barracuda Networks Inc. reserves the right to change, modify, transfer, or otherwise revise this publication without notice.