

## How to Self-Enroll for Time-Based One-Time Passwords (TOTP) Using CudaLaunch or the SSL VPN Web Portal

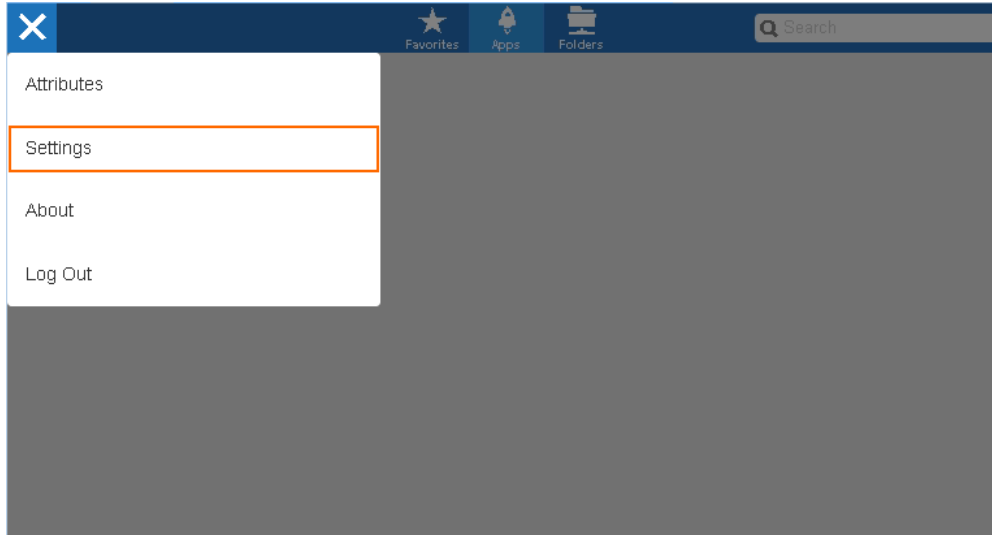
<https://campus.barracuda.com/doc/96025937/>

To enroll your device, install both CudaLaunch and a Time-Based One-Time Password (TOTP) compatible app on your mobile device. You can link your device and the TOTP app by completing the two-step enrollment process:

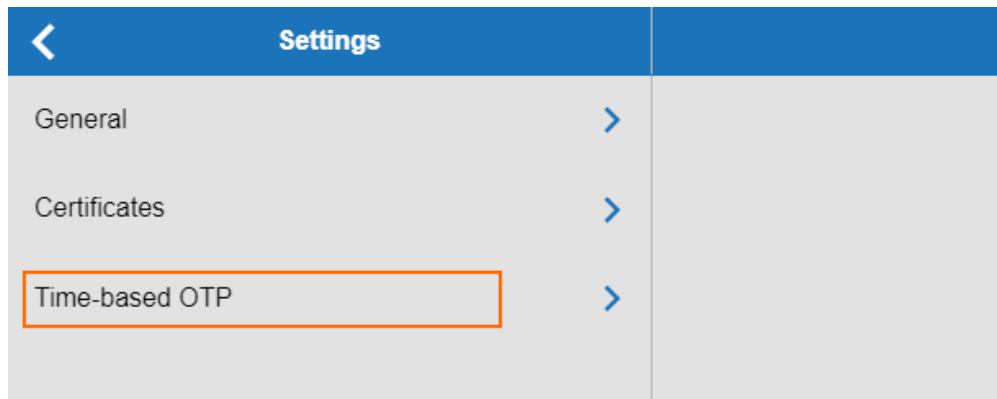
1. Log into CudaLaunch or the SSL VPN web portal to scan the offered QR code. You can also tap on the QR code on your mobile device, or copy the Secret Key into a browser plugin.  
To enroll your mobile device, you must be able to fully log in. TOTP authentication can only be set up when it is not enforced.
2. Enter the verification code to finish enrolling your device.

### Enroll a Mobile Device

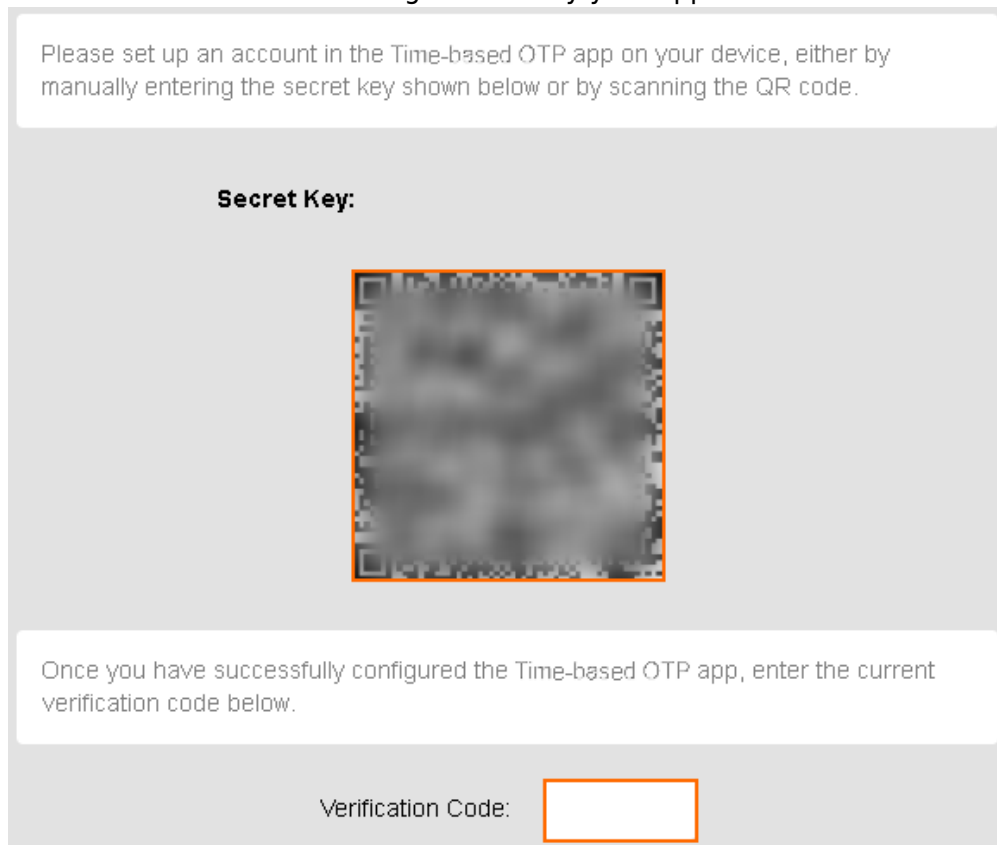
1. Log into the SSL VPN web portal or CudaLaunch without using TOTP authentication.
2. Click the hamburger menu and click **Settings**.



3. Click **Time-based OTP**.

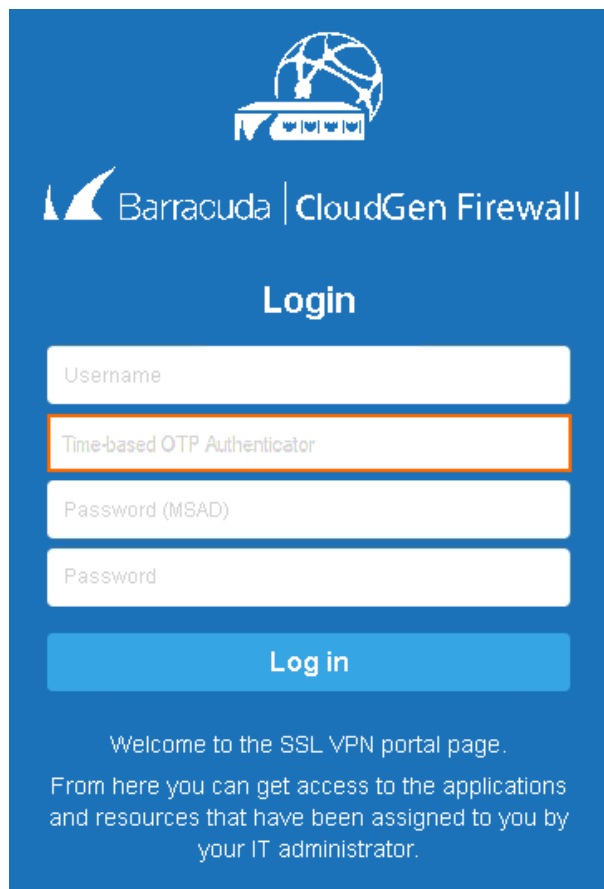


4. Enroll your device by scanning the QR code, or tap on the QR code on your mobile device.
5. Enter the **Verification Code** generated by your app.




6. Click on the check mark in the top-right corner to complete the enrollment.

Your TOTP app is now linked with Time-Based One-Time Password authentication on the CloudGen Firewall. If configured by your firewall admin, you can now use the 6-digit TOTP codes for the SSL VPN web portal and CudaLaunch.



The image shows the login portal for Barracuda CloudGen Firewall. It features a blue background with the Barracuda logo and a network diagram icon at the top. Below the logo, the text "Barracuda | CloudGen Firewall" is displayed. The main heading is "Login". There are four input fields: "Username", "Time-based OTP Authenticator" (highlighted with an orange border), "Password (MSAD)", and "Password". Below these fields is a blue "Log in" button. At the bottom, there is a welcome message: "Welcome to the SSL VPN portal page. From here you can get access to the applications and resources that have been assigned to you by your IT administrator."

 Barracuda | CloudGen Firewall

## Login

Username

Time-based OTP Authenticator

Password (MSAD)

Password

**Log in**

Welcome to the SSL VPN portal page.  
From here you can get access to the applications  
and resources that have been assigned to you by  
your IT administrator.

It is strongly recommended that you copy the backup codes and store them in a safe place.

## Figures

1. sslvpn\_portal\_settings\_00.png
2. sslvpn\_portal\_totpauth\_00.png
3. totp\_auth\_enrollment.png
4. select\_totp\_auth\_login\_policy\_MFA.png

© Barracuda Networks Inc., 2024 The information contained within this document is confidential and proprietary to Barracuda Networks Inc. No portion of this document may be copied, distributed, publicized or used for other than internal documentary purposes without the written consent of an official representative of Barracuda Networks Inc. All specifications are subject to change without notice. Barracuda Networks Inc. assumes no responsibility for any inaccuracies in this document. Barracuda Networks Inc. reserves the right to change, modify, transfer, or otherwise revise this publication without notice.