
Getting Started - Control Center for Microsoft Azure

<https://campus.barracuda.com/doc/96026387/>

The Barracuda Firewall Control Center for Microsoft Azure is available as a Bring Your Own License (BYOL) image from the Azure Marketplace or as a VHD from the [Barracuda Download Portal](#). Two models are available: The VCC610 supports two ranges and unlimited clusters, the VCC400 one range and three clusters. The Control Center can manage both on-premises hardware and virtual units, as well as CloudGen Firewalls in the public cloud. It is not possible to use the Azure Control Center in a high availability cluster.

Before You Begin

- Purchase a Firewall Control Center for Microsoft Azure license.
- Deploy the Control Center for Microsoft Azure image. For more information, see [Microsoft Azure Deployment](#).
- Make sure the Control Center license is installed and activated on the box layer. For more information, see [How to Activate and License a Stand-Alone Virtual or Public Cloud Firewall or Control Center](#).

Step 1. Set a Static IP Address for the Control Center VM

You must reserve the internal IP address of your Control Center VM because managed CloudGen Firewalls expect the IP address of the Control Center to be static.

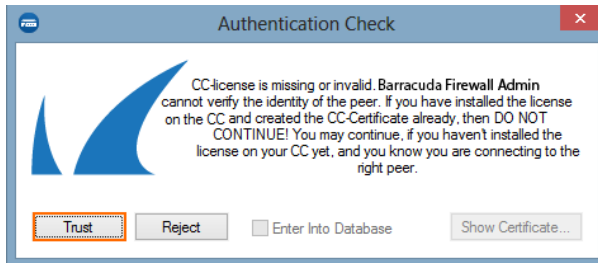
Step 2. Export the Base License on Box Layer

1. Log into the box layer of the Control Center.
2. Open the **CONFIGURATION > Configuration Tree > Box > Box Licenses** page.
3. Click **Lock**.
4. In the **Licenses** table, select the **Base License** and click **Im/ Export** and select **Export to clipboard** or **Export to File**.

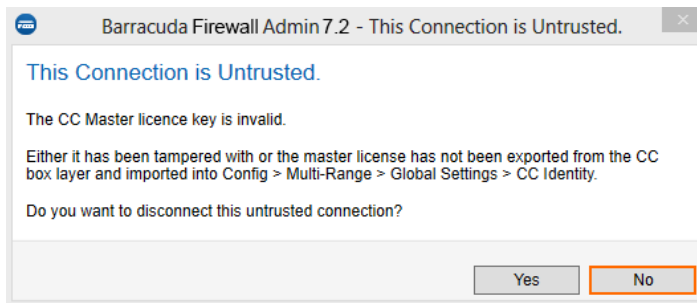
Step 3. Configure CC Identification Settings

The **CC Identification** settings are required to secure communication between the Control Center and the CloudGen Firewalls it manages.

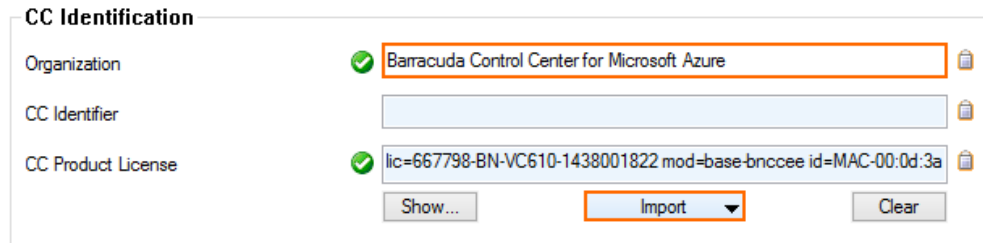
1. Log into the Control Center.
2. Click **Trust**.



3. Go to **CONFIGURATION > Configuration Tree > Multi-Range > Global Settings > CC Identity**. The **This Connection is Untrusted** popup opens.
4. Click **No**.



5. Click **Lock**.
6. In the **CC Identification** section, click **Import** and select **Import from Clipboard** or **Import from File** to import the base license exported in step 3.
7. In the **Organization** field, enter your organization name.


 A form titled "CC Identification" with three input fields: "Organization" (containing "Barracuda Control Center for Microsoft Azure" and a green checkmark icon), "CC Identifier" (empty), and "CC Product License" (containing "lic=667798-BN-VC610-1438001822 mod=base-bnccee id=MAC-00:0d:3a" and a green checkmark icon). Below the fields are three buttons: "Show...", "Import" (highlighted with an orange border and a dropdown arrow), and "Clear".

8. In the left menu, click **Trust Chain**.
9. Define the keys and certificates required for secure communication between the Control Center and the CloudGen Firewalls that it will manage:
 - **CC Private Key** - Click **New Key** and specify the key length.
 - **CC Certificate** - Click **Edit** and specify the certificate settings.
 - **CC SSH Key** - Click **New Key** and specify the key length.
10. Click **Send Changes** and **Activate**.

Step 4. (optional) Complete the Auto Activation Form

To automatically activate managed CloudGen Firewall licenses, you must enter the data for the auto-activation form once.

1. Log into the Control Center.
2. Go to **CONFIGURATION > Configuration Tree > Multi-Range > Global Settings > CC Parameters**.
3. In the left menu, select **Activation Template**.
4. Click **Lock**.
5. Enter the **Owner** and **Purchase Information**.
6. Click **Send Changes** and **Activate**.

Next Steps

Continue with the steps below to set up the Control Center in Microsoft Azure according to your needs.

Task	Link
Create Admins	Control Center Admins
Configure Central Management	<ul style="list-style-type: none">• Central Management• How to Manage Ranges and Clusters
Add Managed CloudGen Firewalls	<ul style="list-style-type: none">• How to Configure a Remote Management Tunnel for a CloudGen Firewall• How to Import an Existing CloudGen Firewall into a Control Center
License Managed CloudGen Firewalls	<ul style="list-style-type: none">• How to Assign and Activate Single Licenses on a Control Center• How to Install and Assign Pool Licenses on a Control Center
Revision Control System (RCS)	<ul style="list-style-type: none">• How to Configure Revision Control System Monitoring (RCS)
Modify Azure Route tables for VIP network	Azure Networking

Figures

1. azure_cc_021.png
2. azure_cc_031.png
3. azure_cc_04.png

© Barracuda Networks Inc., 2024 The information contained within this document is confidential and proprietary to Barracuda Networks Inc. No portion of this document may be copied, distributed, publicized or used for other than internal documentary purposes without the written consent of an official representative of Barracuda Networks Inc. All specifications are subject to change without notice. Barracuda Networks Inc. assumes no responsibility for any inaccuracies in this document. Barracuda Networks Inc. reserves the right to change, modify, transfer, or otherwise revise this publication without notice.