

---

## Control Center Statistics

<https://campus.barracuda.com/doc/96026392/>

Statistics data from managed CloudGen Firewalls is processed and maintained on the Barracuda Firewall Control Center. The CC Statistics Collector (dstatm) and CC Statistics Viewer (qstatm) services collect raw data from the firewall systems and process them according to the specified transfer settings. To view the statistics that are generated from this data, you must introduce the CC Statistics Collector (dstatm) and CC Statistics Viewer (qstatm) services on the box layer of the Control Center.

### Configure Statistics Processing

---

In the Control Center, you can configure how statistics data from managed firewalls is processed and maintained. You can configure global, range-specific, or cluster-specific statistics settings. In the Cook settings, you can specify how *dstats* processes and maintains statistics for specific data types. Statistics Transfer settings specify which statistics data files are sent from a managed CloudGen Firewall to the Control Center.

For more information, see [How to Configure Statistics Processing and Maintenance](#) and [How to Configure Statistics Transfer](#).

### Configure Statistics Data Collection

---

Statistics files can be simultaneously collected from multiple systems. The CC Statistics Collector and CC Statistics Viewer services allow data collection by range and by cluster. These two services must be created and configured on the box layer of the Control Center.

For more information, see [How to Configure the Statistics Services](#).

### Statistics Monitoring

---

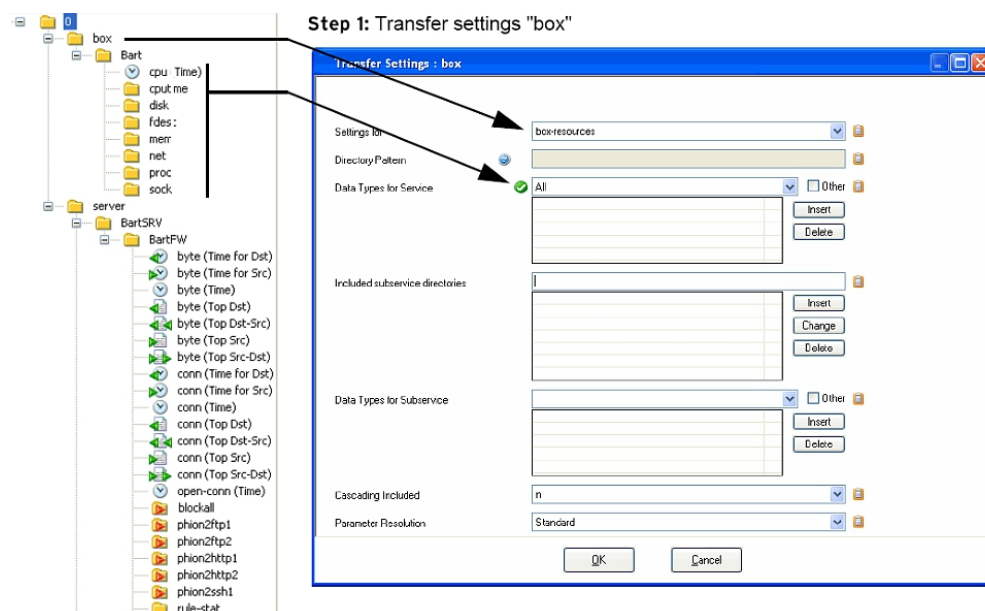
You can view and monitor the status of statistics collection from each managed CloudGen Firewall on the Control Center. From the **Statistics Collection** page, you can also manually get and recover lost statistics entries.

For more information, see [How to Monitor and Recover Statistics](#).

## Examples for Transfer Settings

### Transfer all Box and Server Files:

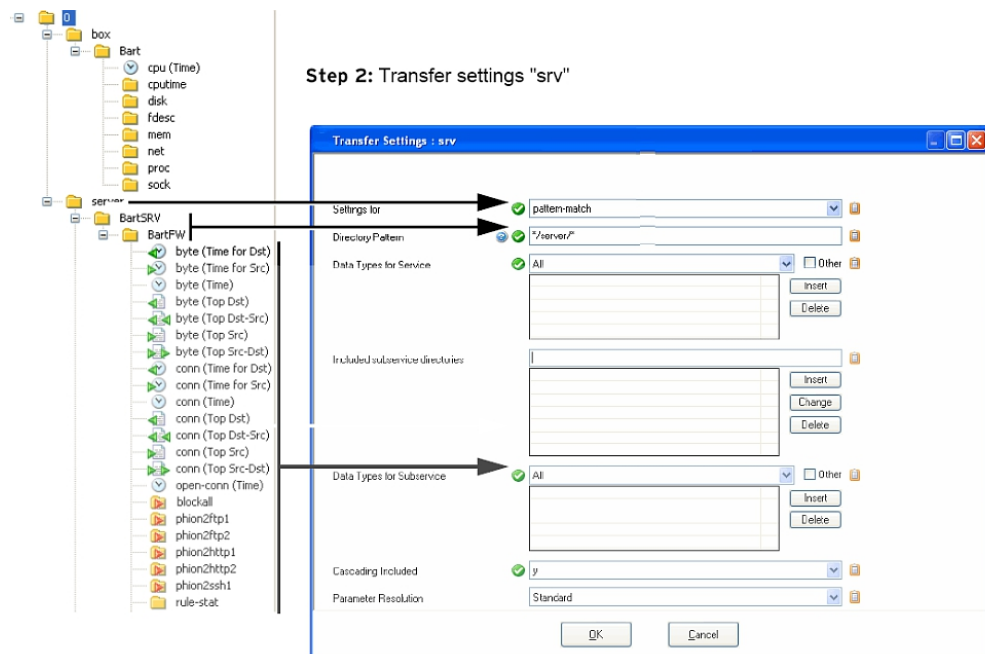
**Step 1: Transfer settings "box"**



The screenshot shows the 'box' directory tree on the left, with 'Bart' and 'server' subdirectories. The 'Bart' directory contains 'cpu', 'cpu me', 'disk', 'fdes:', 'mem', 'net', 'proc', and 'sock'. The 'server' directory contains 'BartSRV' and 'BartFW'. The 'BartFW' directory contains various subdirectories like 'byte (Time for Dst)', 'byte (Time for Src)', 'byte (Time)', 'byte (Top Dst)', 'byte (Top Dst-Src)', 'byte (Top Src)', 'byte (Top Src-Dst)', 'conn (Time for Dst)', 'conn (Time for Src)', 'conn (Time)', 'conn (Top Dst)', 'conn (Top Dst-Src)', 'conn (Top Src)', 'conn (Top Src-Dst)', 'open-conn (Time)', 'blockall', 'phion2ftp1', 'phion2ftp2', 'phion2http1', 'phion2http2', 'phion2ssh1', and 'rule-stat'. The 'Transfer Settings : box' dialog box is open, showing the following settings:

- Settings for: box-resources
- Directory Pattern: (empty)
- Data Types for Service: All
- Included subservice directories: (empty)
- Data Types for Subservice: (empty)
- Cascading Included: n
- Parameter Resolution: Standard

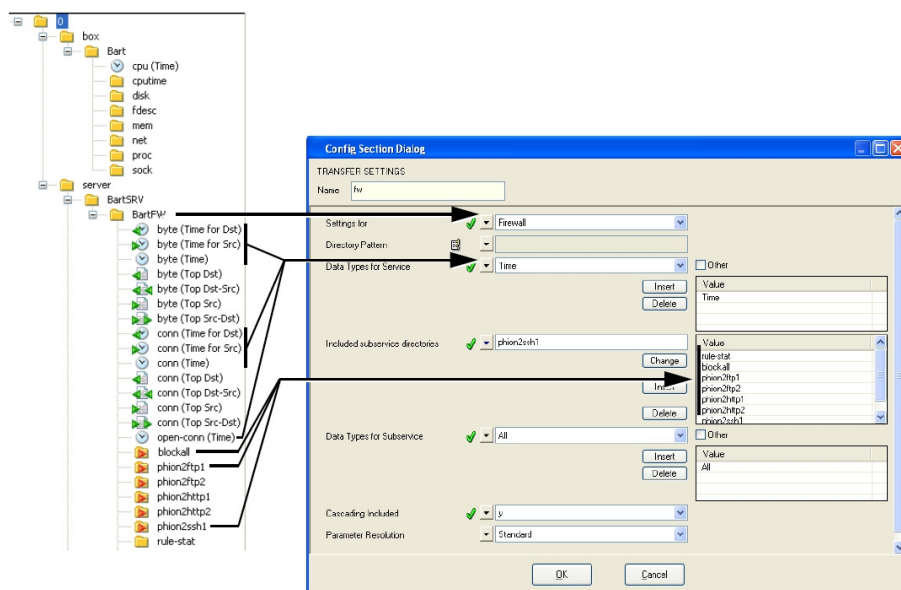
**Step 2: Transfer settings "srv"**



The screenshot shows the 'srv' directory tree on the left, with 'Bart' and 'server' subdirectories. The 'Bart' directory contains 'cpu', 'cpumt', 'disk', 'fdes:', 'mem', 'net', 'proc', and 'sock'. The 'server' directory contains 'BartSRV' and 'BartFW'. The 'BartFW' directory contains various subdirectories like 'byte (Time for Dst)', 'byte (Time for Src)', 'byte (Time)', 'byte (Top Dst)', 'byte (Top Dst-Src)', 'byte (Top Src)', 'byte (Top Src-Dst)', 'conn (Time for Dst)', 'conn (Time for Src)', 'conn (Time)', 'conn (Top Dst)', 'conn (Top Dst-Src)', 'conn (Top Src)', 'conn (Top Src-Dst)', 'open-conn (Time)', 'blockall', 'phion2ftp1', 'phion2ftp2', 'phion2http1', 'phion2http2', 'phion2ssh1', and 'rule-stat'. The 'Transfer Settings : srv' dialog box is open, showing the following settings:

- Settings for: pattern-match
- Directory Pattern: \*/server/\*
- Data Types for Service: All
- Included subservice directories: (empty)
- Data Types for Subservice: All
- Cascading Included: y
- Parameter Resolution: Standard

### Partial Transfer:



## Figures

1. transf1a.png
2. transf1b.png
3. transf2.png

© Barracuda Networks Inc., 2024 The information contained within this document is confidential and proprietary to Barracuda Networks Inc. No portion of this document may be copied, distributed, publicized or used for other than internal documentary purposes without the written consent of an official representative of Barracuda Networks Inc. All specifications are subject to change without notice. Barracuda Networks Inc. assumes no responsibility for any inaccuracies in this document. Barracuda Networks Inc. reserves the right to change, modify, transfer, or otherwise revise this publication without notice.