

How to Find the Serial Number of Your Barracuda Networks Product

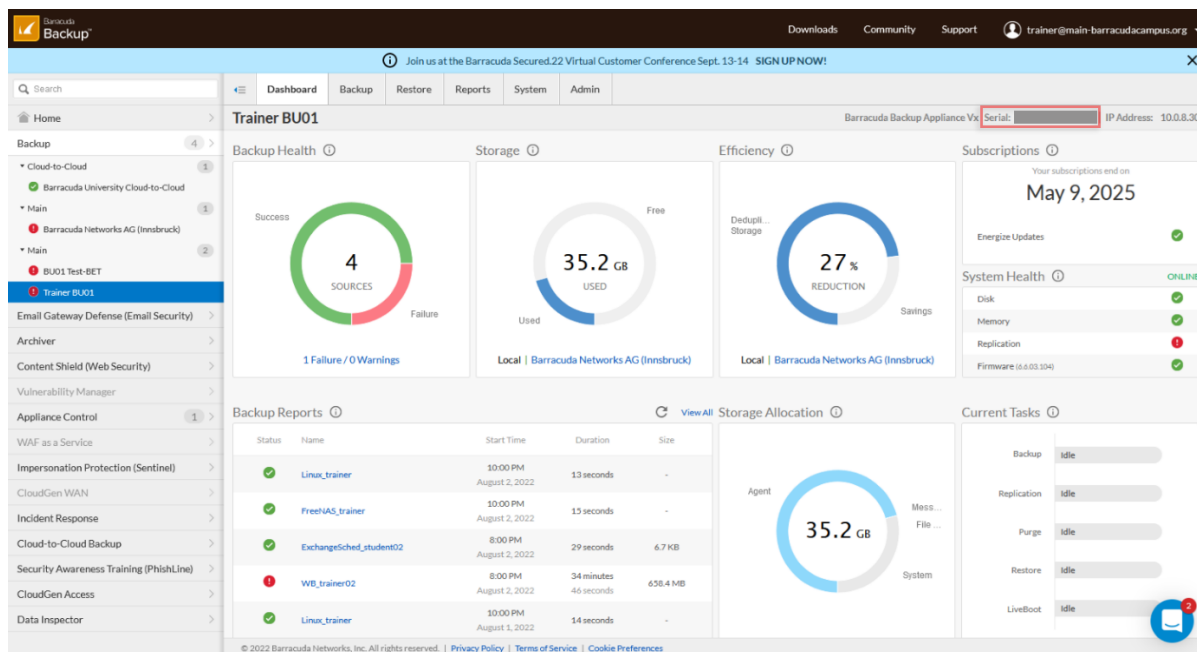
<https://campus.barracuda.com/doc/98213627/>

Please select your Barracuda product from the list below to get instructions on how to find the serial number inside your product's user interface:

Barracuda Backup

1. Log into Barracuda Cloud Control.
2. Go to **Backup** from the left-side menu.
3. Select the specific Barracuda Backup device.

After the dashboard has loaded, you will see the Barracuda Backup serial number in the top-right corner.



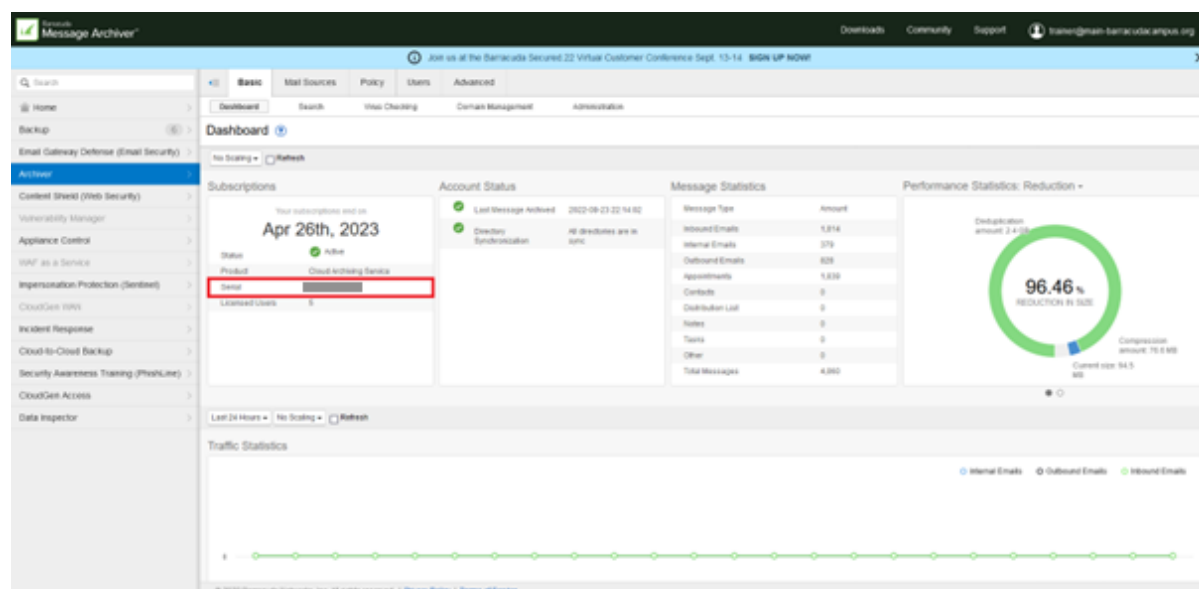
The screenshot shows the Barracuda Backup dashboard. In the top-right corner, the serial number is displayed as "Serial: [redacted]" next to the IP address "10.0.8.30". The dashboard includes various sections: Backup Health (4 SOURCES, 1 Failure / 0 Warnings), Storage (35.2 GB USED, 35.2 GB FREE), Efficiency (27% REDUCTION), Subscriptions (Your subscription ends on May 9, 2025), System Health (ONLINE), Backup Reports (table with columns: Status, Name, Start Time, Duration, Size), Storage Allocation (35.2 GB), and Current Tasks (Backup, Replication, Purge, Restore, LiveBoot, all idle).

Status	Name	Start Time	Duration	Size
✓	Linux_trainer	10:00 PM August 2, 2022	13 seconds	-
✓	FreeNAS_trainer	10:00 PM August 2, 2022	15 seconds	-
✓	ExchangeServer_student02	8:00 PM August 2, 2022	29 seconds	6.7 KB
✗	WB_trainer02	8:00 PM August 2, 2022	34 minutes 46 seconds	658.4 MB
✓	Linux_trainer	10:00 PM August 1, 2022	14 seconds	-

Barracuda Cloud Archiving Service

1. Log into Barracuda Cloud Control.
2. In the left menu, select **Archiver**.

The first item on the left of the dashboard provides the serial number for Barracuda Cloud Archiving Service in the third row.



Barracuda Cloud Security Guardian

1. Log into Barracuda Cloud Security Guardian.
2. On the dashboard, scroll to the **License** section.

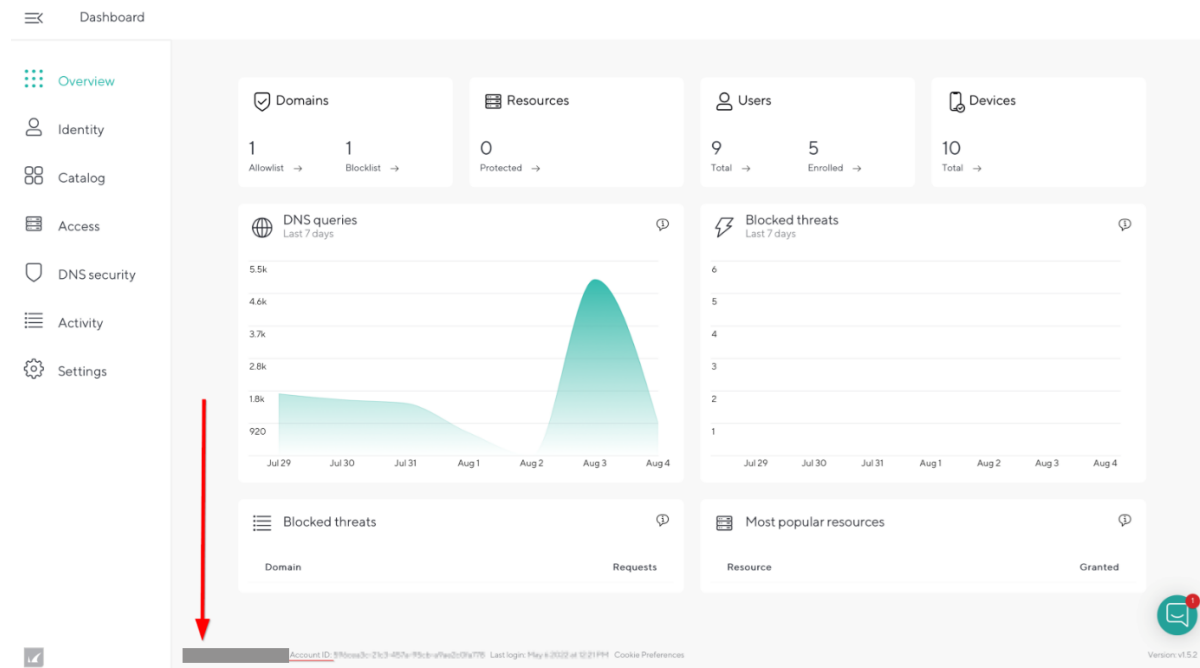
There you will find the product license information, including your serial number and status.

You can also reach the dashboard at any time from the menu in the upper-left corner of any Barracuda Cloud Security Guardian page.

Barracuda CloudGen Access

1. Log into the CloudGen Access Enterprise console.
2. Scroll to the bottom of the page to verify the serial number. The support team usually also needs to know the account ID, which is also located at the bottom of the page.

Please note that the product does not show a serial number for trial versions and partners.



Barracuda CloudGen Firewall

1. Use Barracuda Firewall Admin to log into the CloudGen Firewall.
2. Go to **CONTROL > Licenses**.

In the **License Values** section on the right, you will find the product serial number.

DASHBOARD CONFIG **CONTROL** FIREWALL VPN PROXY LOGS STATISTICS EVENTS SSH

Server Network Resources **Licenses** Box Sessions Refresh if active Refresh (F5)

Normal box operation

ACTIVE LICENSES

Name/Module	License	Expires	HostID	Status
base-bnrf50	BN-VF50	02.01.2030 01:00:00	MAC-00:50:5...	Valid-Host-ID
add-bnrf50-e	BN-VF50-EnergizeUpdate	02.01.2030 01:00:00	MAC-00:50:5...	Valid-Host-ID
add-bnrf50-v	BN-VF50-VPN	02.01.2030 01:00:00	MAC-00:50:5...	Valid-Host-ID
add-bnrf50-w	BN-VF50-WebSecurity	23.07.2016 23:00:00	MAC-00:50:5...	Valid-Host-ID

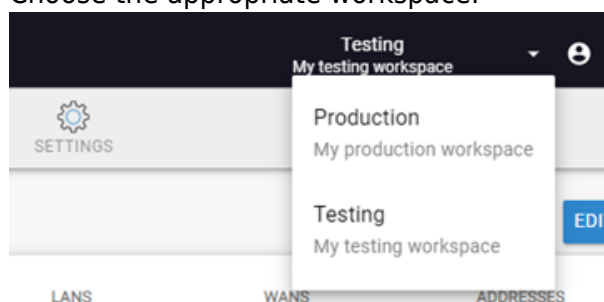
License Values

License: Barracuda
License-Virtual: True
License-Model: VF50
Capacity: 50
Web-Security: 50
SSL/VPN/AC: licensed
Demo Mode: no
Export Mode: no
CC managed: no
Platform:
Product: vf50
Configured Appliance: VF50
Detected Appliance: VM
Serial Number:
Flash based: no
Statistics: yes
Licensed Tunnels: unlimited
Compression: licensed
Hardware Encryption: not licensed
Padlock Encryption: licensed
VPN Shaping: licensed
NAC: unlimited
Protected IPs: unlimited
Protected IPs: 0

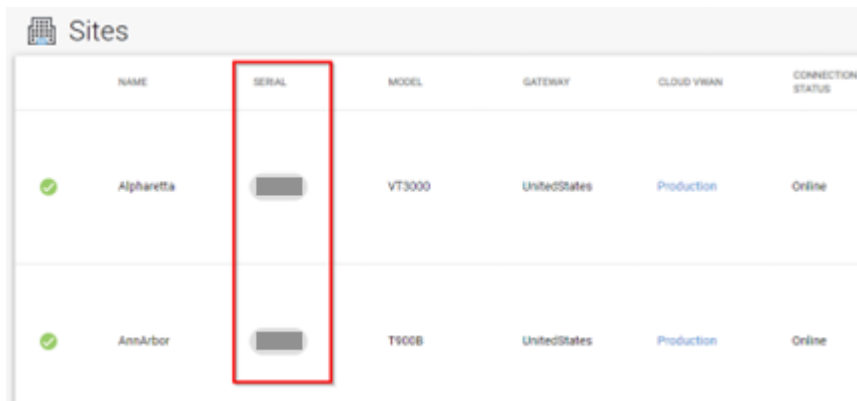
Barracuda CloudGen WAN

For the old interface:

1. Log into your CloudGen WAN user interface (<https://cloudgenwan.barracudanetworks.com>).
2. Choose the appropriate workspace.

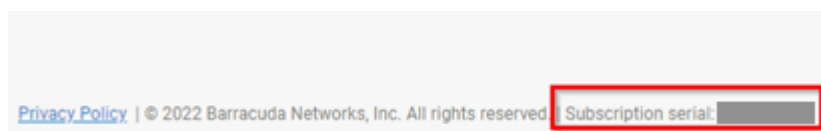


3. Open the **Sites** tab to view the serial numbers for your sites.



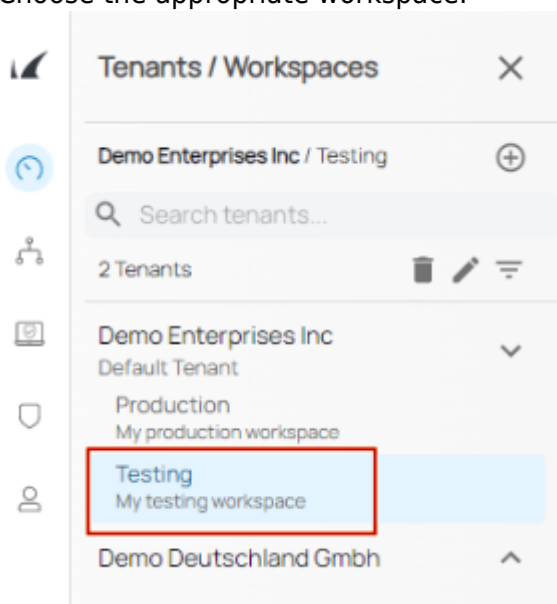
	NAME	SERIAL	MODEL	GATEWAY	CLOUD WAN	CONNECTION STATUS
✓	Alpharetta		VT3000	UnitedStates	Production	Online
✓	AnnArbor		T900B	UnitedStates	Production	Online

The serial number of your subscription will be found on the bottom of the site.

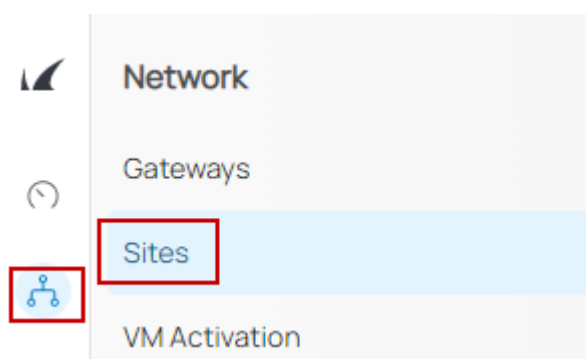


For the new interface:

1. Log into your CloudGen WAN user interface (<https://cloudgenwan.barracudanetworks.com>).
2. Choose the appropriate workspace.



3. Click the **Network** icon and select **Sites**.



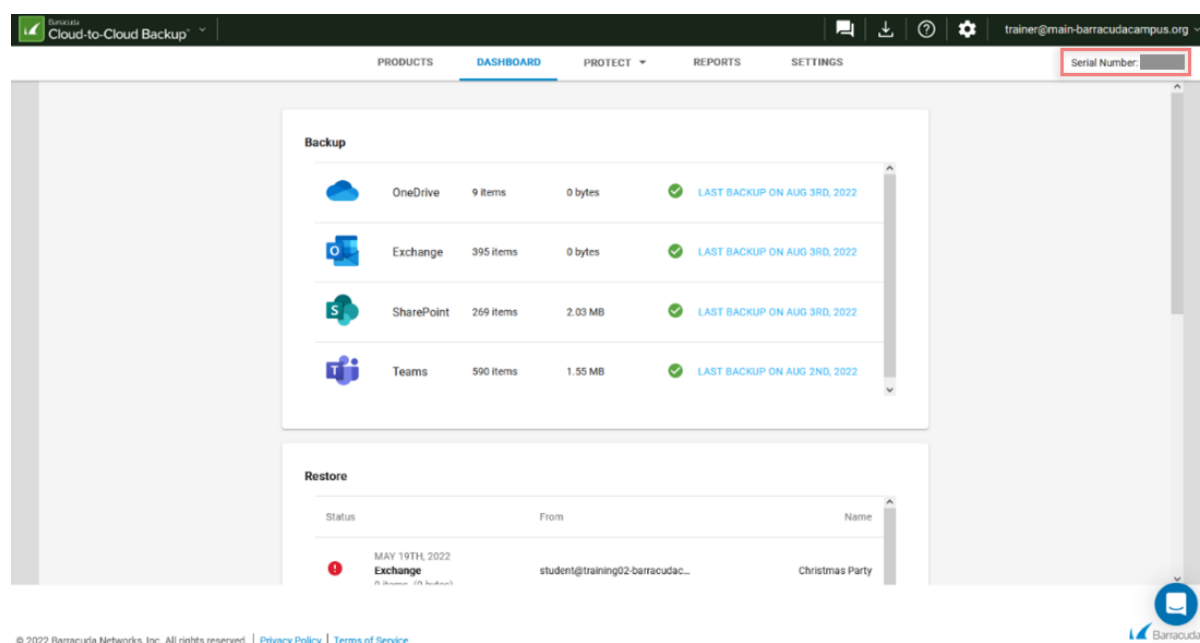
The serial numbers for your sites are shown on the **Sites** page.

The serial number of your subscription will be found on the bottom of the site.

Barracuda Cloud-to-Cloud Backup

1. Log into Barracuda Cloud Control.
2. Select **Cloud-to-Cloud Backup** from the left-side menu.

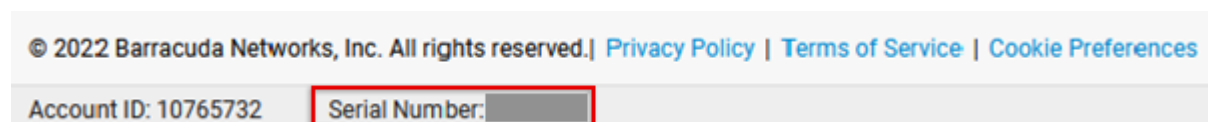
After the dashboard has loaded, you will see the serial number in the top-right corner.



Barracuda Content Shield

1. Log into Barracuda Cloud Control.
2. In the left menu, select **Content Shield**. A new window opens.
3. You may need to scroll down.

At the bottom of the open browser window, in the gray area between the active text and the desktop, you will see the account ID and serial number.



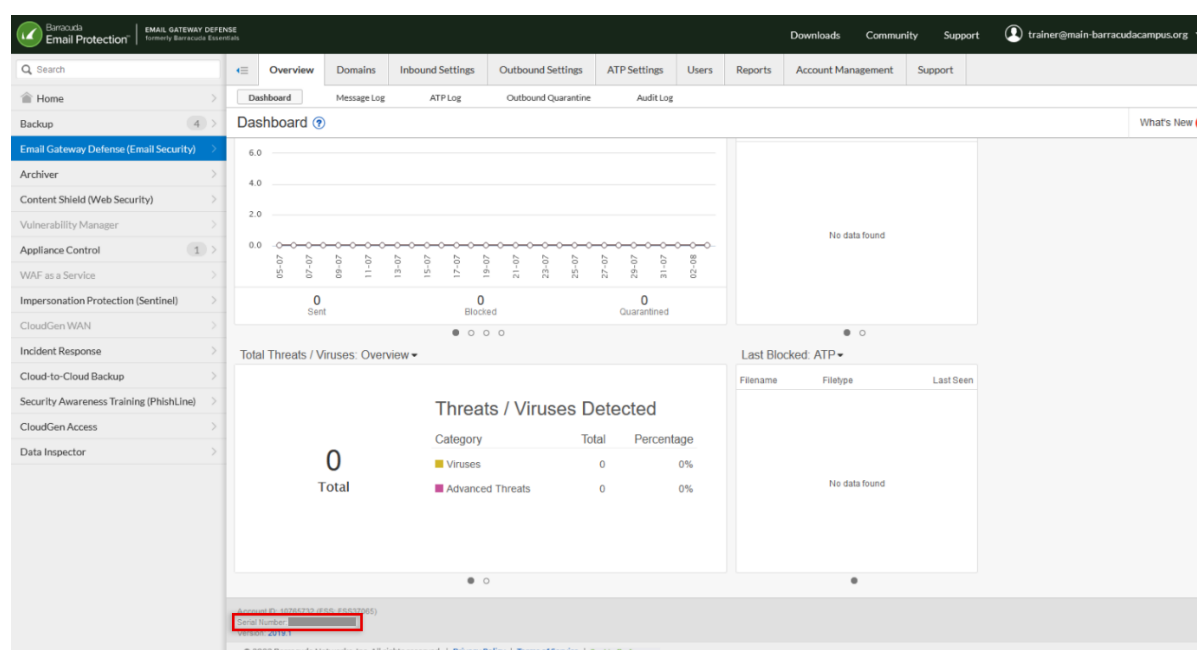
Barracuda Data Inspector

This product does not display the serial number in the user interface.

Barracuda Email Gateway Defense

1. Log into Barracuda Cloud Control.
2. In the left menu, select **Email Gateway Defense**.

At the very bottom of the page, in the gray border footer, you will see the Email Gateway Defense serial number.



Barracuda Email Security Gateway

- Log into the Barracuda Email Security Gateway web UI.

Once the dashboard has loaded, you will see the serial number at the very bottom of the page.

Barracuda Firewall Insights

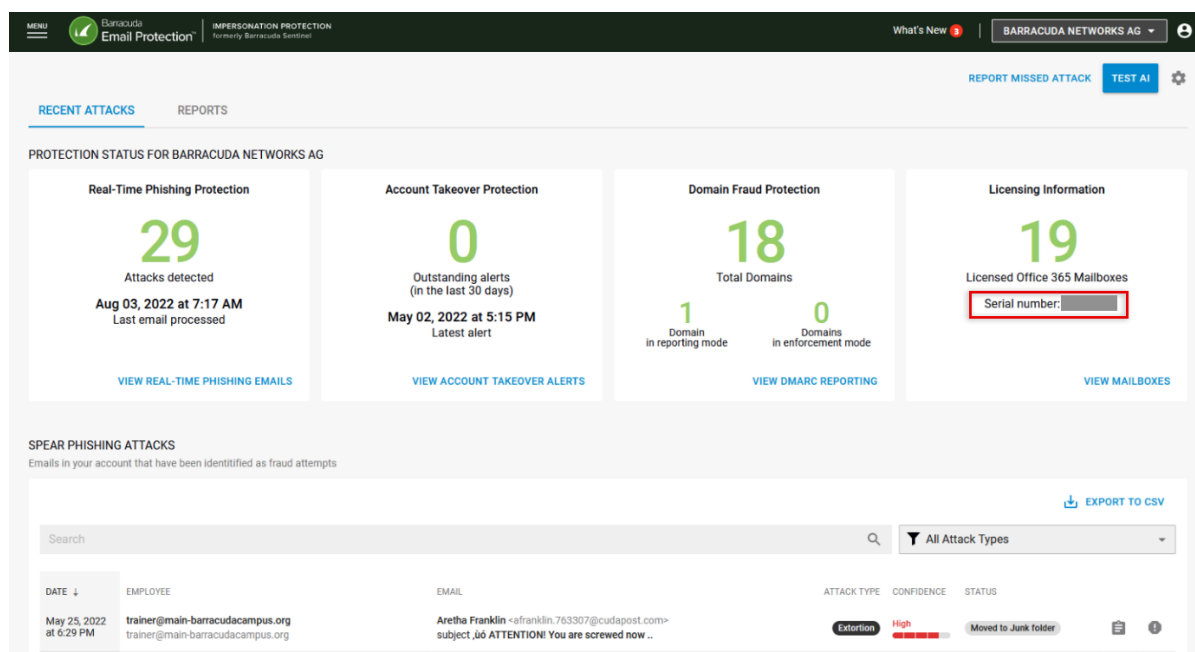
- Log into the Barracuda Firewall Insights web UI.

After the dashboard has loaded, you will see the serial number at the very bottom of the page.

Barracuda Impersonation Protection

1. Log into Barracuda Cloud Control.
2. In the left menu, select **Impersonation Protection**.

After the dashboard has loaded, you will see the serial number in the top-right corner under **Licensing Information**.



PROTECTION STATUS FOR BARRACUDA NETWORKS AG

Real-Time Phishing Protection	Account Takeover Protection	Domain Fraud Protection	Licensing Information
29 Attacks detected Aug 03, 2022 at 7:17 AM Last email processed	0 Outstanding alerts (in the last 30 days) May 02, 2022 at 5:15 PM Latest alert	18 Total Domains 1 Domain in reporting mode 0 Domains in enforcement mode	19 Licensed Office 365 Mailboxes Serial number: [REDACTED]

SPEAR PHISHING ATTACKS

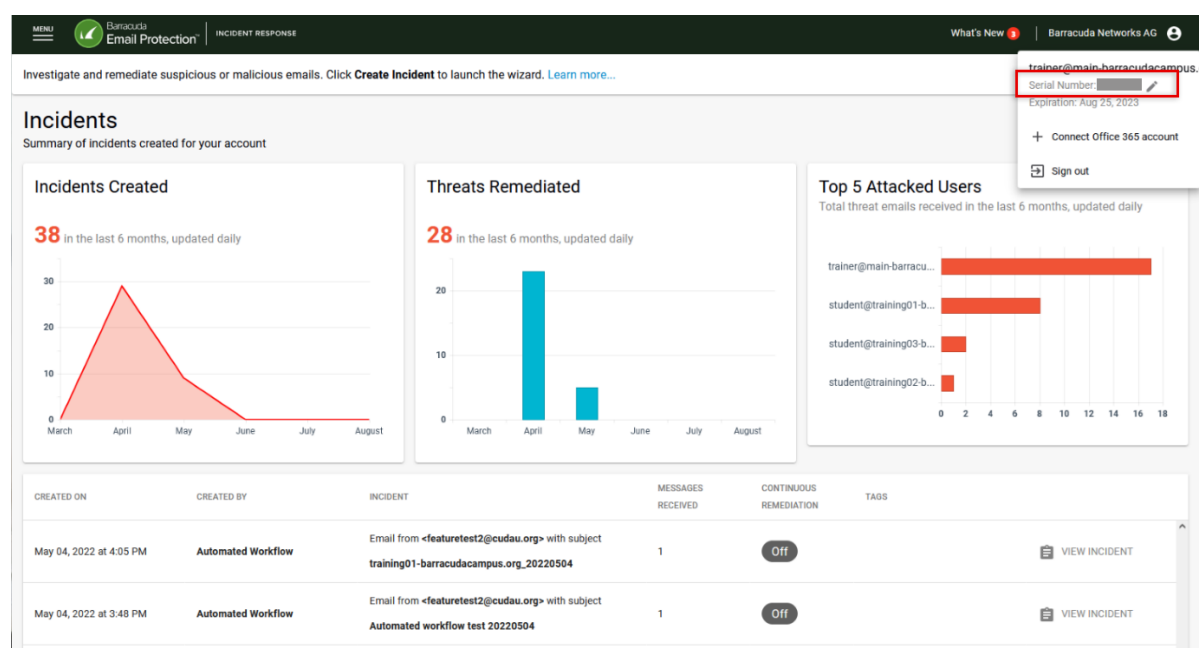
Emails in your account that have been identified as fraud attempts

DATE	EMPLOYEE	EMAIL	ATTACK TYPE	CONFIDENCE	STATUS
May 25, 2022 at 6:29 PM	trainer@main-barracudacampus.org	Aretha Franklin <afranklin.763307@cupost.com> subject: ¡¡¡ ATTENTION! You are screwed now ..	Extortion	High	Moved to Junk folder

Barracuda Incident Response

1. Log into Barracuda Cloud Control.
2. In the left menu, select **Incident Response**.
3. Click on the **Profile** icon on the top-right side of the screen.

A drop-down menu will appear, which includes the account username and serial number.



Barracuda Load Balancer ADC

1. Log into the Load Balancer ADC web UI.
2. After the dashboard has loaded, scroll down to the bottom of the page.

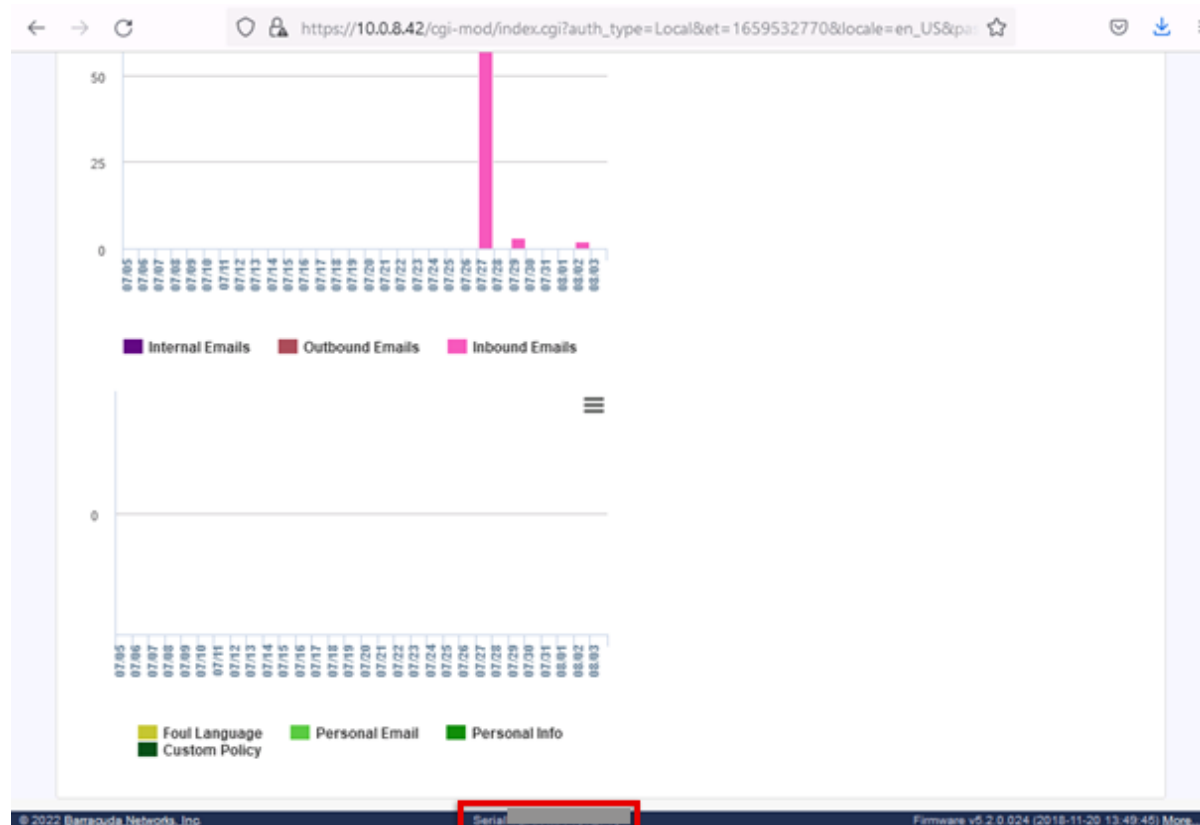
The serial number is located in the center. On the right, you will see the currently installed firmware version.

Barracuda Message Archiver

1. Log into the Message Archiver web UI using your username and password.
2. The dashboard will load. Scroll down to the bottom of the screen.

At the very bottom of the page, in the center of the blue border footer, you will see the Message

Archiver serial number.



Barracuda Reporting Server

1. Log into the Reporting Server web UI.
2. After the dashboard has loaded, scroll down to the bottom of the page.

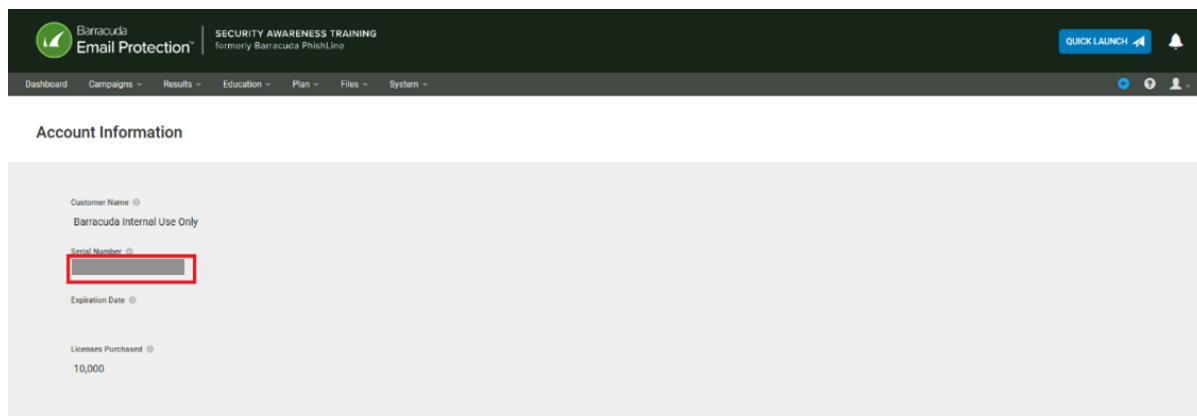
The serial number is located in the center. On the right, you will see the currently installed firmware version.

Barracuda Security Awareness Training

1. Log into Security Awareness Training.
2. On the right, click the **Profile** icon.



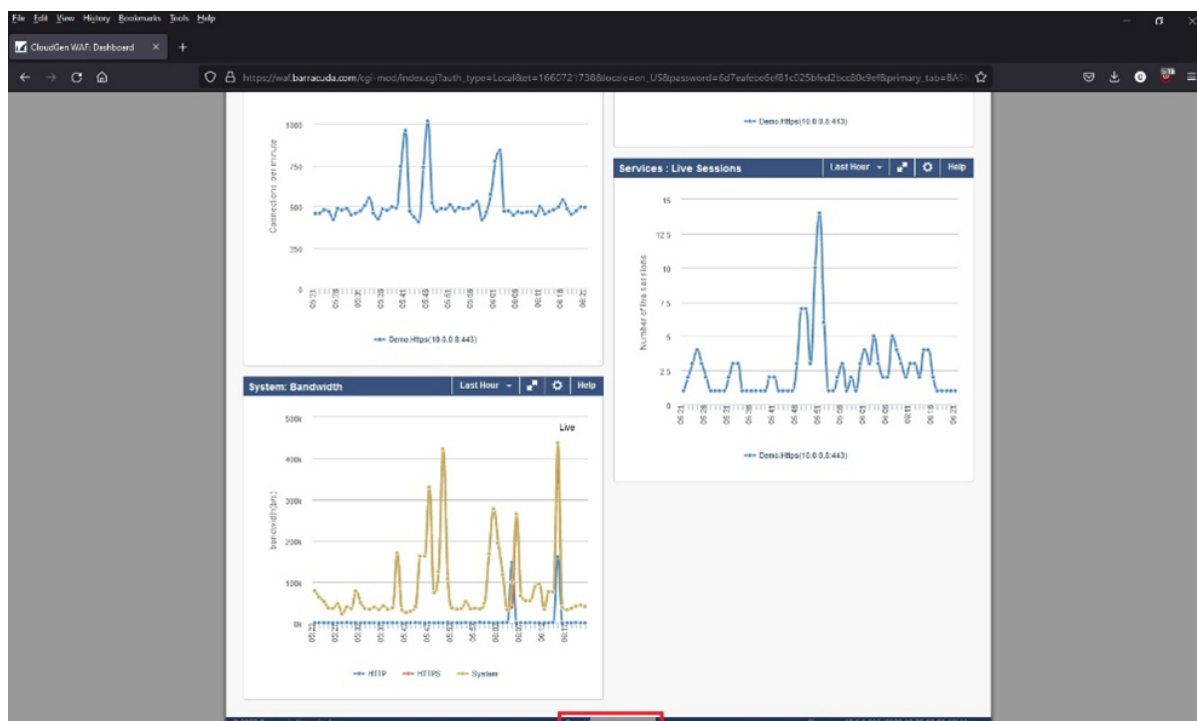
3. Click **Account Information**.



Barracuda Web Application Firewall

1. Log into the WAF web UI.
2. After the dashboard has loaded, scroll down to the bottom of the page.

The serial number is located in the center. On the right, you will see the currently installed firmware version.



Barracuda WAF Control Center

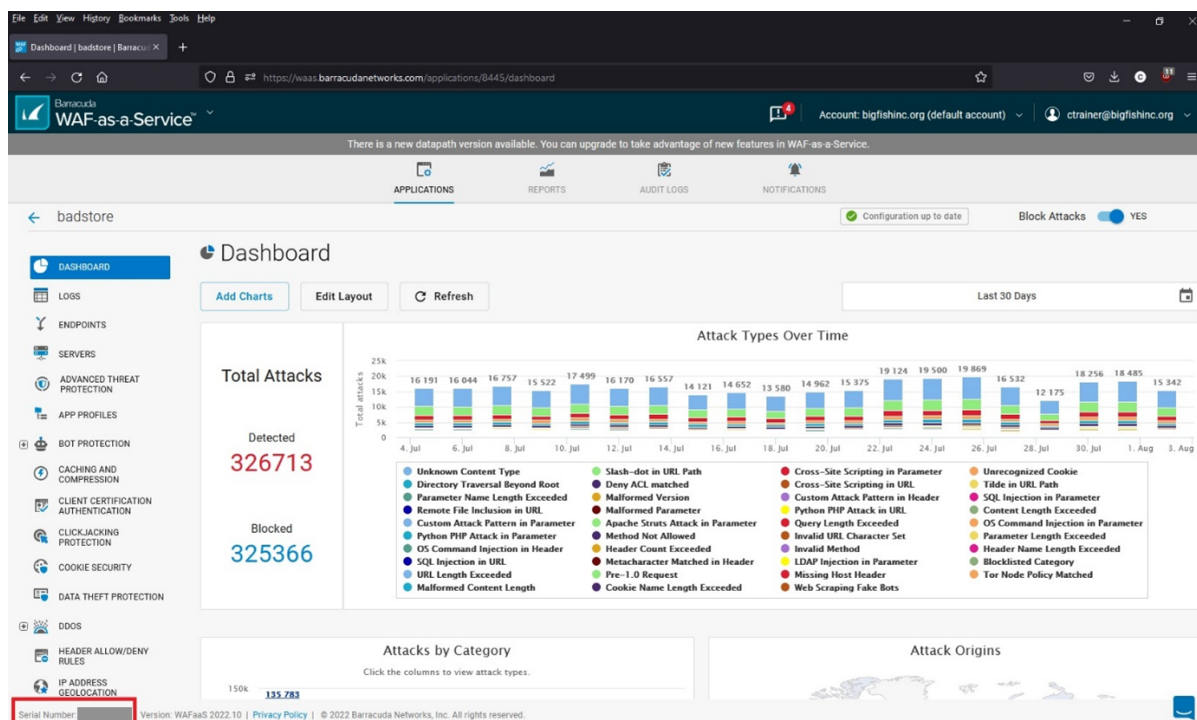
1. Log into the WAF Control Center web UI.
2. After the dashboard has loaded, scroll down to the bottom of the page.

The serial number is located in the center. On the right, you will see the currently installed firmware version.

Barracuda WAF-as-a-Service

1. Log into WAF-as-a-Service
2. After the dashboard has loaded, scroll down to the bottom of the page.

The serial number is located on the left.



Barracuda Web Security Gateway

- Log into the Barracuda Web Security Gateway web UI.

After the dashboard has loaded, you will see the serial number at the very bottom of the page.

Figures

1. serial_bu.png
2. serial_cas.png
3. serial_cga.png
4. serial_cgf.png
5. serial_cgw.png
6. serial_cgw01.png
7. serial_cgw02.png
8. workspace_Testing.png
9. network_site_90.png
10. serial_cbu.png
11. serial_cs.png
12. serial_egd.png
13. serial_ip.png
14. serial_ir.png
15. serial_bma.png
16. serial_sat.png
17. serial_sat01.png
18. serial_waf.png
19. serial_wafaas.png

© Barracuda Networks Inc., 2024 The information contained within this document is confidential and proprietary to Barracuda Networks Inc. No portion of this document may be copied, distributed, publicized or used for other than internal documentary purposes without the written consent of an official representative of Barracuda Networks Inc. All specifications are subject to change without notice. Barracuda Networks Inc. assumes no responsibility for any inaccuracies in this document. Barracuda Networks Inc. reserves the right to change, modify, transfer, or otherwise revise this publication without notice.