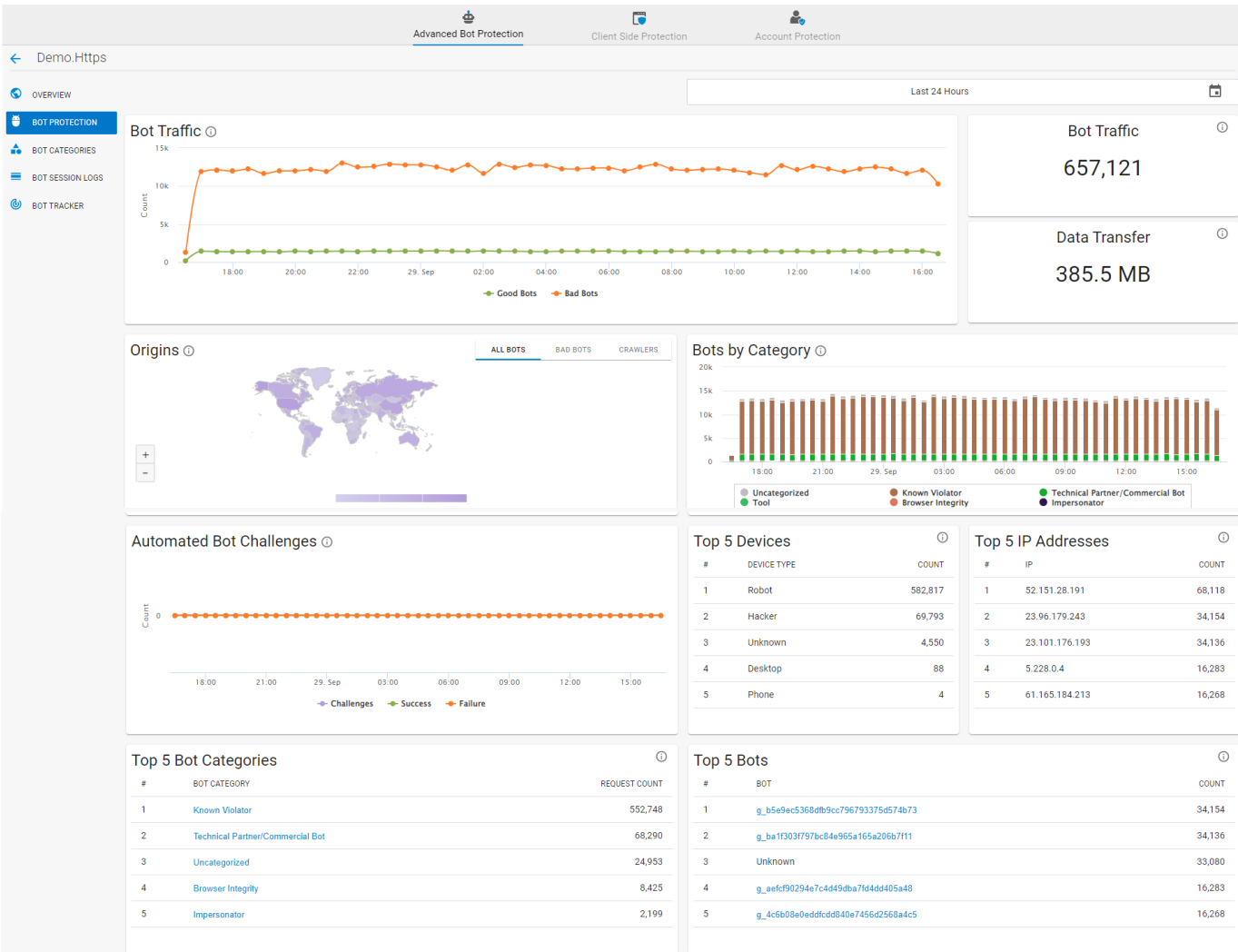


## Bot Protection (Application View)

<https://campus.barracuda.com/doc/98216686/>

The **Bot Protection** section provides information on the bots that attempted to access the application, the geographical origin of the bot requests, the top five (5) devices, the IP addresses the bot requests originated from, and the top five (5) bot categories and bots.

- **Bot Traffic** – Displays the traffic trend for good and bad bots.
- **Origins** – Displays the geographical location where the bot requests originated from. Hover over the map to view the number of bot requests originating from a particular region/country.
- **Bots by Category** – Displays the bot requests that are categorized based on their behavior
- **Automated Bot Challenges** – Displays the number of Captcha challenges presented to requests, and the outcome of the challenge as success or failure.
- **Top 5 Devices** – Displays the top five (5) device types that are identified based on the client fingerprint.
- **Top 5 IP Addresses** – Displays the top five (5) client IP addresses where the bot requests originated from.
- **Top 5 Bot Categories** – Displays the top five (5) bot categories that are identified and categorized based on their behavior.
- **Top 5 Bots** – Displays the top five (5) client fingerprints identified as bots.



## Figures

### 1. Bot\_Protection.png

© Barracuda Networks Inc., 2024 The information contained within this document is confidential and proprietary to Barracuda Networks Inc. No portion of this document may be copied, distributed, publicized or used for other than internal documentary purposes without the written consent of an official representative of Barracuda Networks Inc. All specifications are subject to change without notice. Barracuda Networks Inc. assumes no responsibility for any inaccuracies in this document. Barracuda Networks Inc. reserves the right to change, modify, transfer, or otherwise revise this publication without notice.