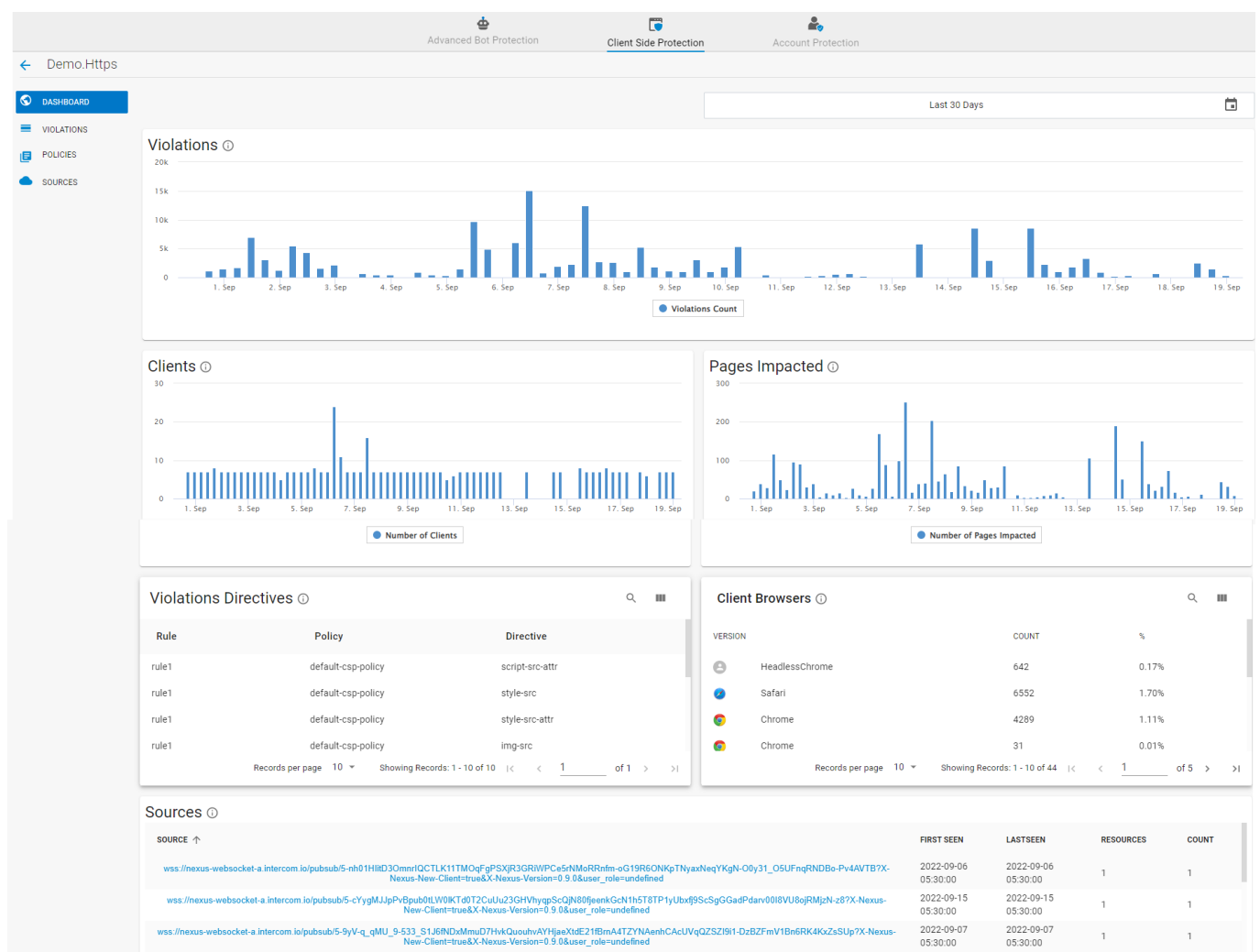


## Dashboard (Application View)

<https://campus.barracuda.com/doc/98217374/>

The **Dashboard** section provides information on the total number of CSP violations detected by the client browser(s), the total number of clients that violated the CSP policy settings, the total number of web pages that were affected by the CSP violations, the list of CSP directives that were violated, and the list of client browsers that detected the CSP violations.

- **Violations:** Displays the total number of CSP violations detected by the client browser(s).
- **Clients:** Displays the total number of clients that violated the CSP policy settings.
- **Pages Impacted:** Displays the total number of web pages that were affected by the CSP violations.
- **Violations Directives:** Displays the list of directives that encountered the violations.
- **Client Browsers:** Displays the list of client browsers that detected the CSP violations.
- **Sources:** Domains where CSP violation was observed.



## Figures

### 1. Dashboard.png

© Barracuda Networks Inc., 2024 The information contained within this document is confidential and proprietary to Barracuda Networks Inc. No portion of this document may be copied, distributed, publicized or used for other than internal documentary purposes without the written consent of an official representative of Barracuda Networks Inc. All specifications are subject to change without notice. Barracuda Networks Inc. assumes no responsibility for any inaccuracies in this document. Barracuda Networks Inc. reserves the right to change, modify, transfer, or otherwise revise this publication without notice.