

Cloud Web UI

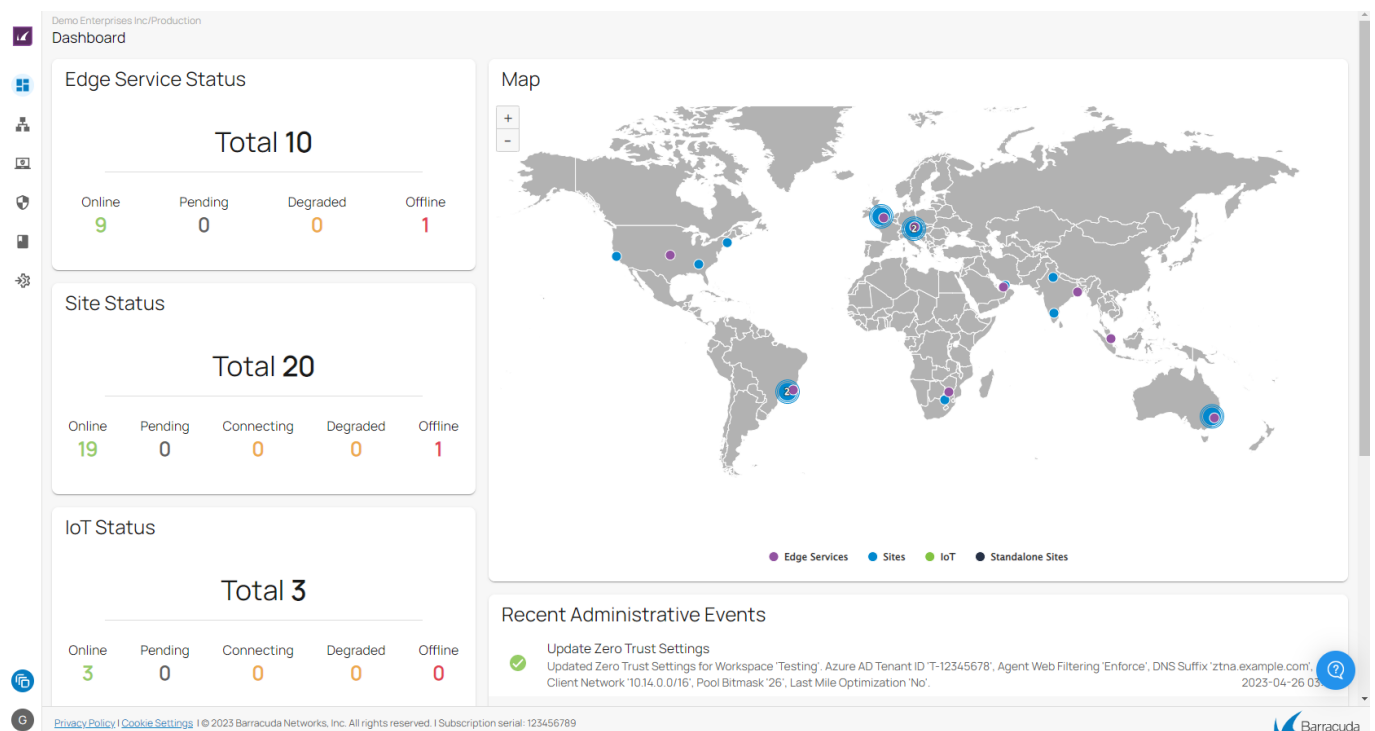
<https://campus.barracuda.com/doc/98223591/>

The cloud web UI is the central management point of Barracuda SecureEdge. From here, you can manage all your edge services, sites, and appliances, and perform various configuration and maintenance actions. To access the Barracuda SecureEdge cloud web UI, go to <https://se.barracudanetworks.com> and log in with your existing Barracuda Cloud Control account. For more information, see [Getting Started](#). To access the configuration elements, open the corresponding tabs and navigate through the left menu.

The Barracuda SecureEdge cloud web UI provides the following main sections:

Dashboard

The Barracuda SecureEdge dashboard gives you an overview on web- and network traffic for connected sites and devices and provides aggregated data on SD-WAN tunnels and security information. Administrators can create their own workspace and customize the view on connected devices for which they want the dashboard to display information. To access information on the SecureEdge dashboard, click the **Dashboard** icon on the left.



Infrastructure

The **Infrastructure** tab provides an overview of all connected edge services, sites, and IoT devices and lets you configure network settings and manage your connections. From this tab, you can also perform activation and update tasks. To access the settings, click the **Infrastructure** icon on the left and choose the appropriate configuration item from the navigation menu.

Demo Enterprises Inc./Production
Infrastructure > Edge Services New Edge Service

Add filter Edit columns

	NAME	TYPE	UPSTREAM	LOCATION	CONNECTION STATUS	SIZE	SITES	
✓	Australia	Production	AustraliaCentral2	Australia Central 2	Online	20 Scale Units - 10.0 Gbps	3	↓ 🗑️ →
✓	Austria	Private Cloud	(None)		Online	T600D (HA)	5	↓ 🗑️ →
✓	Brazil	Production	BrazilSouth	Brazil South	Online	20 Scale Units - 10.0 Gbps	3	↓ 🗑️ →
✓	India	Production	SouthAsia	Central India	Online	2 Scale Units - 1.0 Gbps	2	↓ 🗑️ →
!	Japan-Offline	Production	Japan	Japan East	Offline	4 Scale Units - 2.0 Gbps	1	↓ 🗑️ →
✓	Singapore	Private Cloud	(None)		Online	VT5000 (HA)	1	↓ 🗑️ →
✓	SouthAfrica	Production	SouthAfricaNorth	South Africa North	Online	10 Scale Units - 5.0 Gbps	1	↓ 🗑️ →
✓	UnitedArabEmirates	Production	UAENorth	UAE North	Online	4 Scale Units - 2.0 Gbps	1	↓ 🗑️ →
✓	UnitedKingdom	Production	WesternEurope	UK South	Online	4 Scale Units - 2.0 Gbps	3	↓ 🗑️ →
✓	UnitedStates	Production	NorthAmerica	West US	Online	20 Scale Units - 10.0 Gbps	4	↓ 🗑️ →

For information on how to connect and configure edge services, sites, and IoT devices, see [Deployment](#).

Access

Barracuda SecureEdge offers remote access and point-to-site capabilities. Point-to-site connections are used to connect an individual device, such as a laptop, to the company network. The **Point-to-Site** configuration lets you enroll users and devices, manage authentication settings for users and groups, and configure your client network in order to assign IP addresses to clients that connect via User Connectivity. To access the SecureEdge access configuration, click the **Access** icon in the left menu.

Demo Enterprises Inc./Production
Access > Points of Entry

Add points of entry

Add filter Edit columns Download CSV

NAME	TYPE	PUBLIC IPS	SIZE	LOCATION
Austria	Gateway		T600D	Austria
France	CloudGen Firewall	52.95.154.72	F180	Paris, 75001, France
Japan-Offline	Gateway		4 Scale Units - 2.0 Gbps	Japan East
Vienna	Site		T200B	Vienna, 1100, Austria

For more information, see [Remote Access](#).

Security Policy

The **Security Policy** page allows you to manage security settings such as IPS, malware protection, and SSL inspection, and configure SD-WAN policies. From here, you can also add, edit, and remove custom applications. To access the SecureEdge security configuration, click the **Security Policy** icon in the left menu and navigate through the settings.

Demo Enterprises Inc./Production
Security Policy > Apps and Resources

New custom application

Add filter

NAME	DESCRIPTION	TYPE	DESTINATIONS	CATEGORY
Intranet	Internal HR service portal	Network	intranet.company.com (TCP)	Web Traffic
Mediaserver	streamingserver hosts	Network	streaming01.westus2.cloudap... streaming02.westeurope.clou...	Voice & Video
Operations Intranet	Internal Operations service portal	Network	ops.company.com (TCP)	Web Traffic
SAP-prod-environment	SAP cluster	Network	10.123.123.0/24 (TCP) 10.128.0.1-4237 (TCP)	SaaS & Business
TestWebApp		Network	mywebapp.com (TCP) 10.19.123.11-8080 (TCP)	Web Traffic
website-production	Internal Production server	Network	172.16.16.23:443 (TCP) 172.16.16.23:80 (TCP)	Network Bulk

For detailed information, see [Policies](#).

Logs and Reporting

The **Logs and Reporting** page provides information on actions performed by administrators and lets you configure email notifications. From here, you can also configure log settings and create reports.

Demo Enterprises Inc/Production
Logs and Reporting > Audit Log

Audit Log showing administrative and system events across all workspaces. Add filter Download CSV

STATUS	CREATED	TYPE	NAME	SERIAL	DESCRIPTION	PUBLIC IP	ADMINISTRATOR
✓	2023-04-26 03:41	Administrator Action	Update Zero Trust Settings		Updated Zero Trust Settings for Workspace 'Testing'. Azure AD Tenant ID 'T-12345678', Agent Web Filtering 'Enforce', DNS Suffix 'ztna.example.com', Client Network '10.14.0.0/16', Pool Bitmask '26', Last Mile Optimization 'No'.	54.161.91.20	
✓	2023-04-26 03:41	Administrator Action	Update Zero Trust Settings		Updated Zero Trust Settings for Workspace 'Production'. Azure AD Tenant ID 'T-12345678', Agent Web Filtering 'Enforce', DNS Suffix 'ztna.example.com', Client Network '10.14.0.0/16', Pool Bitmask '26', Last Mile Optimization 'No'.	54.161.91.20	
✓	2023-04-26 03:41	Administrator Action	Configure VPN		Configured VPN for Workspace 'Testing'. IDP metadata URL 'https://azure.com/T-12345678/idp/location'. SP Entity ID 'https://cloudgenwan.barracudanetworks.com/a701d78b-fbe3-476d-a808-3a8b79e29662'. Client Network Range '10.0.0.0/8', Client Network Pool Size '24', Client Network Primary DNS '', Client Network Secondary DNS '', Client Network Routing Policy 'Internet Access'.	54.161.91.20	
✓	2023-04-26 03:41	System Action	Update Setting		Updated setting 'Point to Site VPN' from 'No' to 'Yes'.	54.161.91.20	
✓	2023-04-26 03:40	Administrator Action	Configure VPN		Configured VPN for Workspace 'Production'. IDP metadata URL 'https://azure.com/T-12345678/idp/location'. SP Entity ID 'https://cloudgenwan.barracudanetworks.com/26c417b8-320e-45fb-b3c3-396091a37287'. Client Network Range '10.0.0.0/8', Client Network	54.161.91.20	

For more information, see [Monitoring](#).

Integration

The SecureEdge **Integration** page allows administrators to connect CloudGen Firewalls to Barracuda SecureEdge. From here, you can also enable Azure Log Analytics. To access the Integration page, click the Integration icon on the left.

Demo Enterprises Inc/Production
Integration > CloudGen Firewalls Registration Token

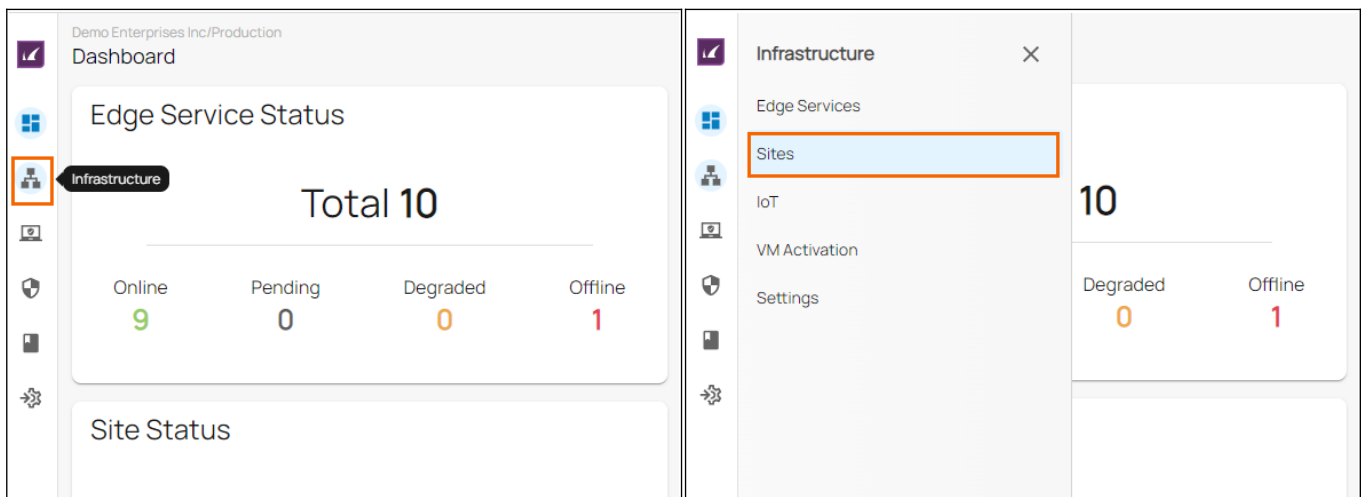
Add filter Edit columns

NAME	SERIAL	CC MANAGED	MODEL
✓ France	830634	×	F180

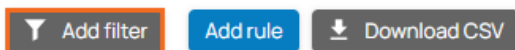
For more information, see [How to Configure a Barracuda CloudGen Firewall in Barracuda SecureEdge](#) and [How to Configure Log Streaming to Microsoft Azure Log Analytics Workspace](#).

The SecureEdge Configuration Menu

Barracuda SecureEdge provides a user-friendly interface that gives you an overview on the configuration and shows information on connected gateways and sites. You can also create and customize your own dashboards. Use the navigation bar on the left to switch between tenants, workspaces, and configuration units. To access a configuration menu and related sub-sections, click the icon that represents the section, and choose the settings from the menu that becomes visible.



To filter the content shown on a page, click **Add Filter** in the top-right corner of a page and select the criteria you wish to search for.



To reset the filter, click **Clear Filter**.

To access the latest release- and migration notes, or if you have questions related to Barracuda SecureEdge, click the question mark icon in the lower right corner. For more information, see [Release and Migration Notes](#).

For more information, see the following:

- Update windows - [Updates](#)
- Log streaming - [How to Configure Log Streaming to Microsoft Azure Log Analytics Workspace](#)
- VM Activation form - [Virtual Systems \(VTx\) Deployment](#)
- Notifications - [How to Create a Notification](#)

Figures

1. SE-dashboard-9.0.png
2. inf-edgeService.png
3. access-PoE.png
4. security-policy.png
5. logs-reporting.png
6. integration-menu.png
7. dasboard-nav-9.0.png
8. dashboard-nav-sites.png
9. add_filter_90.png

© Barracuda Networks Inc., 2024 The information contained within this document is confidential and proprietary to Barracuda Networks Inc. No portion of this document may be copied, distributed, publicized or used for other than internal documentary purposes without the written consent of an official representative of Barracuda Networks Inc. All specifications are subject to change without notice. Barracuda Networks Inc. assumes no responsibility for any inaccuracies in this document. Barracuda Networks Inc. reserves the right to change, modify, transfer, or otherwise revise this publication without notice.