

610b 1U Chassis Rack (Two Screw) Mounting Instructions

<https://campus.barracuda.com/doc/98225883/>

This article refers to rack mountable 1U Barracuda Web Security Gateway **610b** chassis with provided rails; for a complete list of appliances by model, see [Rack Installation of Barracuda Networks Appliances](#).

Rack assembly differs depending on the model of rack unit in your environment. Before rack mounting the appliance, review the installation instructions that accompany your rack unit for detailed rack setup instructions.

Before Getting Started

Before getting started, verify you have the following:

- Cage nuts and screws to attach the appliance to your rack (not provided by Barracuda) if using the optional toothless installation;
- Rail kit included with your appliance, including the hardware to assemble the rails;
- Rack unit is set up in a restricted access location, for example, dedicated equipment rooms, service closets, and other secure, clean, dust-free well ventilated environments;
- There is enough clearance in front of the rack to allow the front door to open completely (~25 inches);
- There is approximately 30 inches of clearance is available in the back of the rack to allow for sufficient airflow and ease of servicing;
- The area does not generate heat, electrical noise, or electromagnetic fields;
- A grounded power outlet is available.

Rack Mounting Precautions

- Ensure the leveling jacks on the bottom of the rack are fully extended to the floor with the full weight of the rack resting on them.
- In a single rack installation, stabilizers should be attached to the rack.
- In multiple rack installations, the racks should be coupled together.
- Verify the rack is stable before extending a component from the rack.
- Extend only one component at a time; extending two or more simultaneously may cause the rack to become unstable.

Safety Review

Review the electrical and general safety precautions that came with the components you are adding to the chassis. Determine the placement of each component in the rack before you install the rails. Install the heaviest appliance components on the bottom of the rack first, and

then work upwards.

Use a regulating uninterruptible power supply (UPS) to protect the appliance from power surges, voltage spikes, and to keep your system operating in case of a power failure. Allow the hot plug hard drives and power supply modules to cool before touching them. Always keep the rack's front door and all panels and components on the appliances closed when not servicing to maintain proper cooling.

- **Ambient Operating Temperature** – If installed in a closed or multi-unit rack assembly, the ambient operating temperature of the rack environment may be greater than the ambient temperature of the room. Therefore, consideration should be given to installing the equipment in an environment compatible with the manufacturer's maximum rated ambient temperature (T_{mra}).
- **Proper Airflow and Mechanical Loading** – Mount equipment into a rack so that the amount of airflow required for safe operation is not compromised and to prevent any hazardous condition that can arise due to uneven mechanical loading.
- **Circuit Overloading** – Consideration should be given to the connection of the equipment to the power supply circuitry and the effect that any possible overloading of circuits might have on overcurrent protection and power supply wiring. Appropriate consideration of equipment nameplate ratings should be used when addressing these concerns.
- **Reliable Ground** – To ensure a reliable ground at all times, the rack itself should be grounded. Particular attention should be given to power supply connections other than the direct connections to the branch circuit (i.e. the use of power strips, etc.).

Before Installation

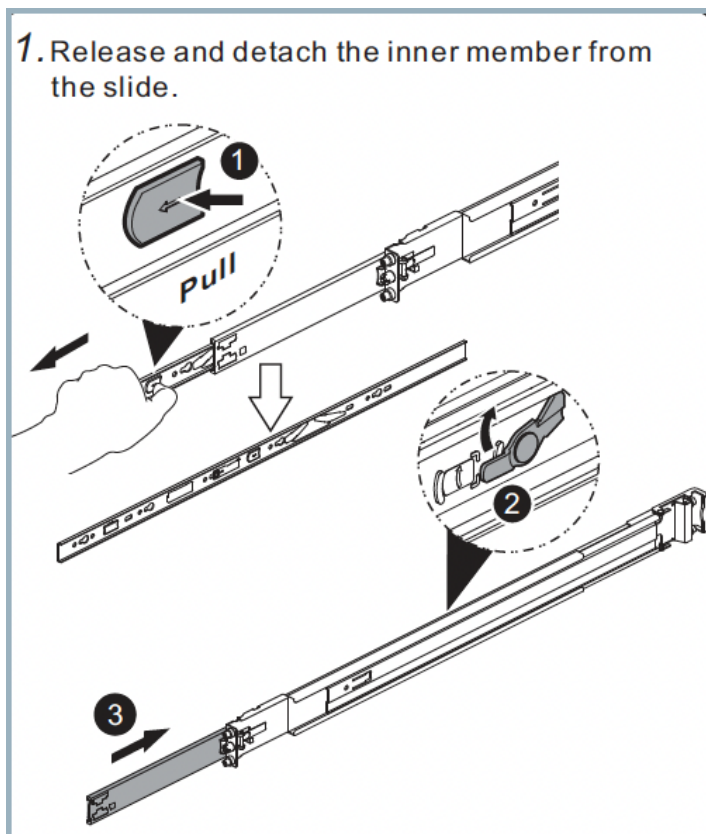
Inspect the shipping box and note if there is any damage. If the chassis itself shows any damage, file a damage claim with the carrier who delivered your Barracuda Networks appliance.

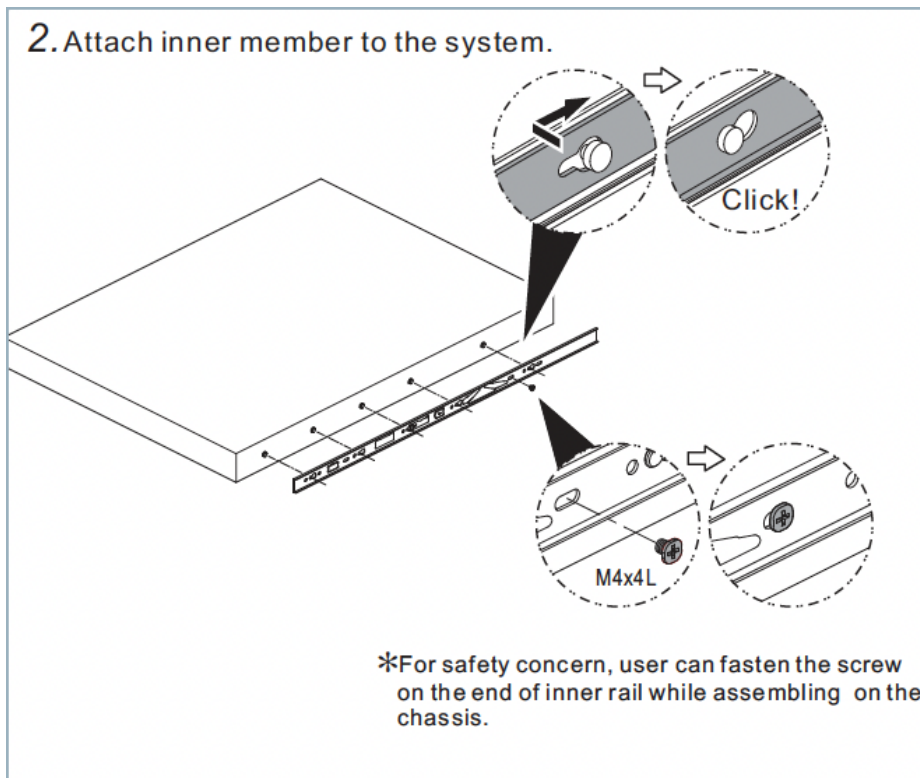
Refer to the installation instructions that came with the rack unit you are using for detailed instructions; these rails fit a rack between 25.5" and 33.25" deep.

The rail kit includes:

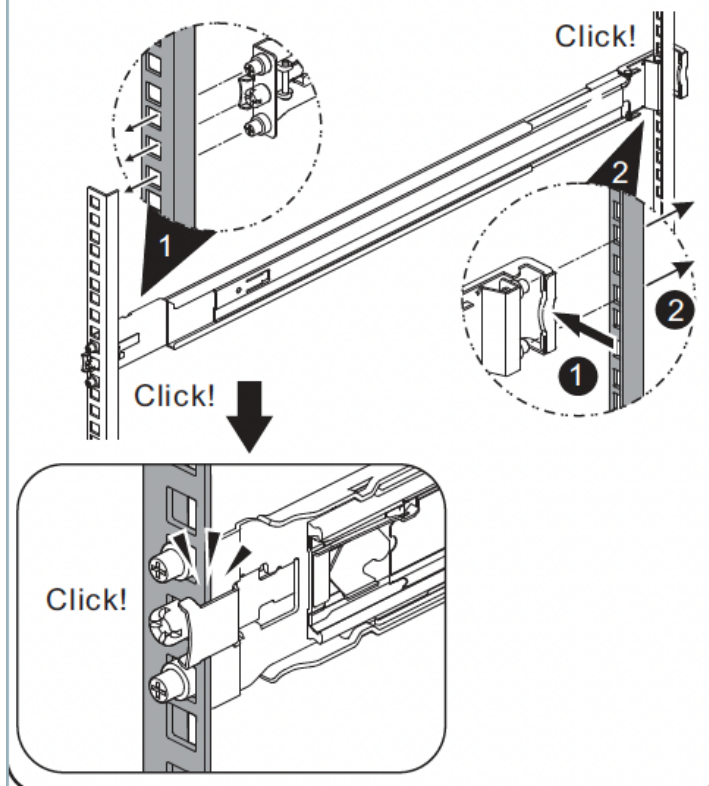
- One pair of inner slides to attach to chassis;
- One pair of outer slides to install in rack;
- Two pair short brackets to be used on the front side of the outer slides;
- One pair of screws.

Steps to Install in the Rack

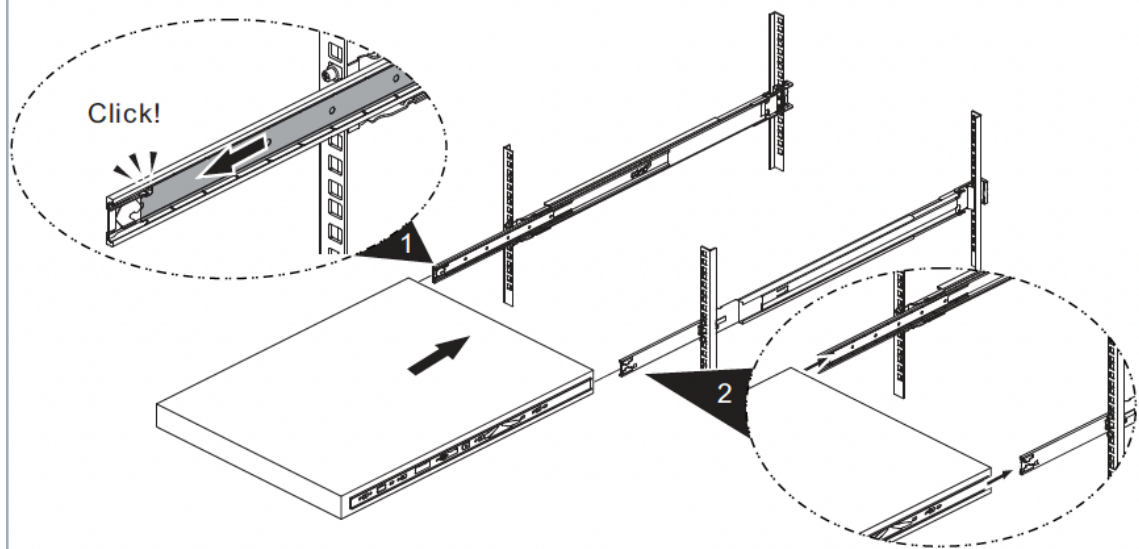




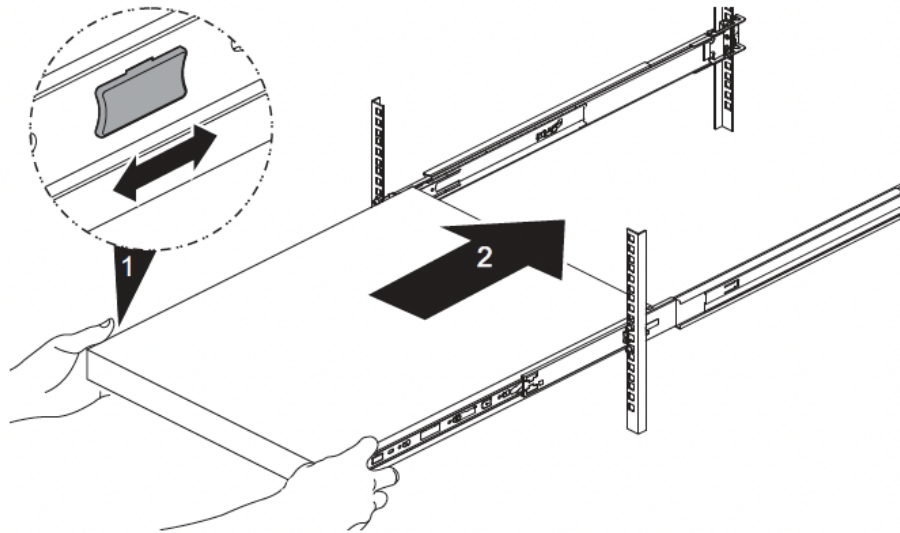
3. Attach outer member to the rack.



4. (1) CAUTION! Verify ball bearing retainer is locked forward. (2) Horizontally install system half way into slide rail.



5. Slide release tab and push system into rack.



Figures

1. 610bRackFigure1.png
2. 610bRackFigure2.png
3. 610bRackFigure3.png
4. 610bRackFigure4.png
5. 610bRackFigure5.png

© Barracuda Networks Inc., 2024 The information contained within this document is confidential and proprietary to Barracuda Networks Inc. No portion of this document may be copied, distributed, publicized or used for other than internal documentary purposes without the written consent of an official representative of Barracuda Networks Inc. All specifications are subject to change without notice. Barracuda Networks Inc. assumes no responsibility for any inaccuracies in this document. Barracuda Networks Inc. reserves the right to change, modify, transfer, or otherwise revise this publication without notice.