

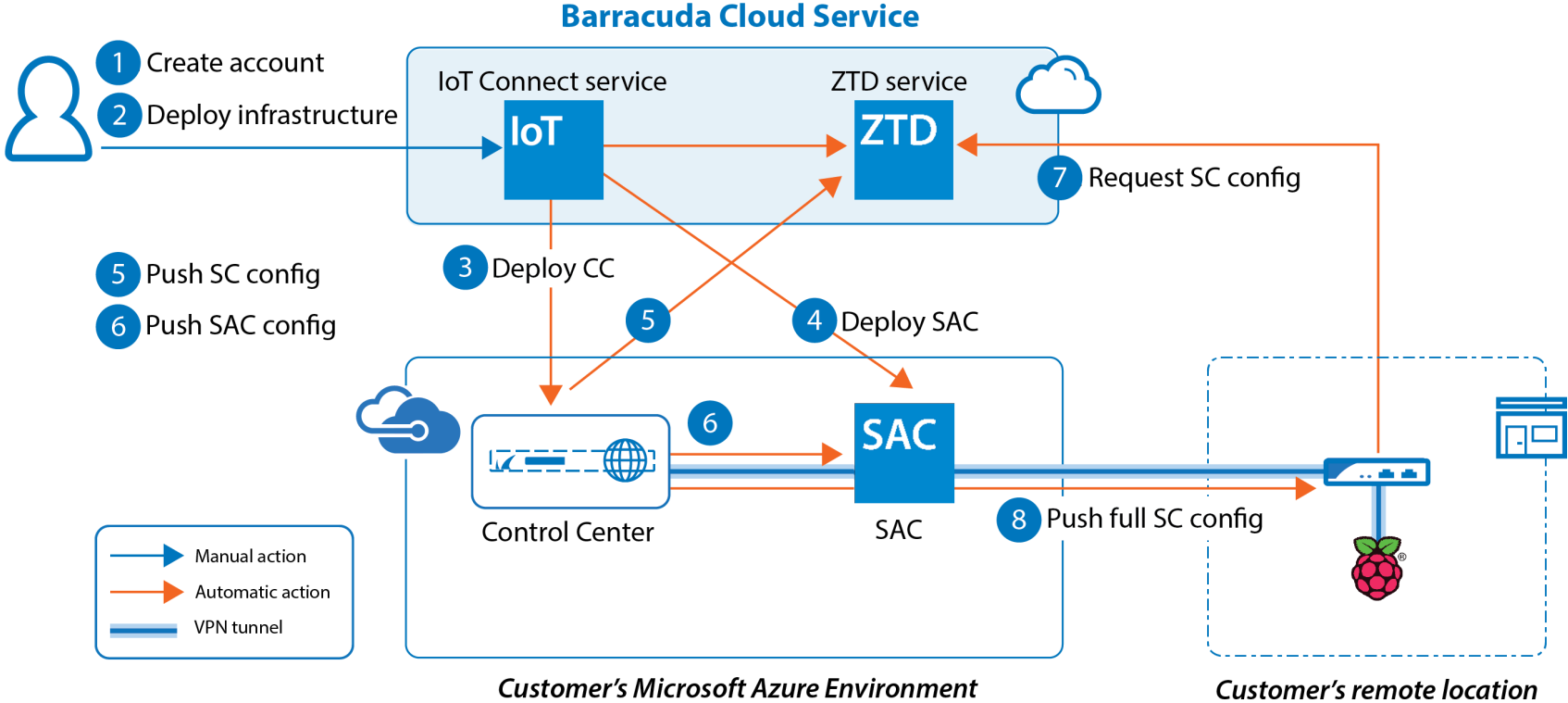


**TECHSUMMIT19**

BARRACUDA TECHNICAL SUMMIT

# Barracuda CloudGen Firewall

Cloud Meets IoT Setup

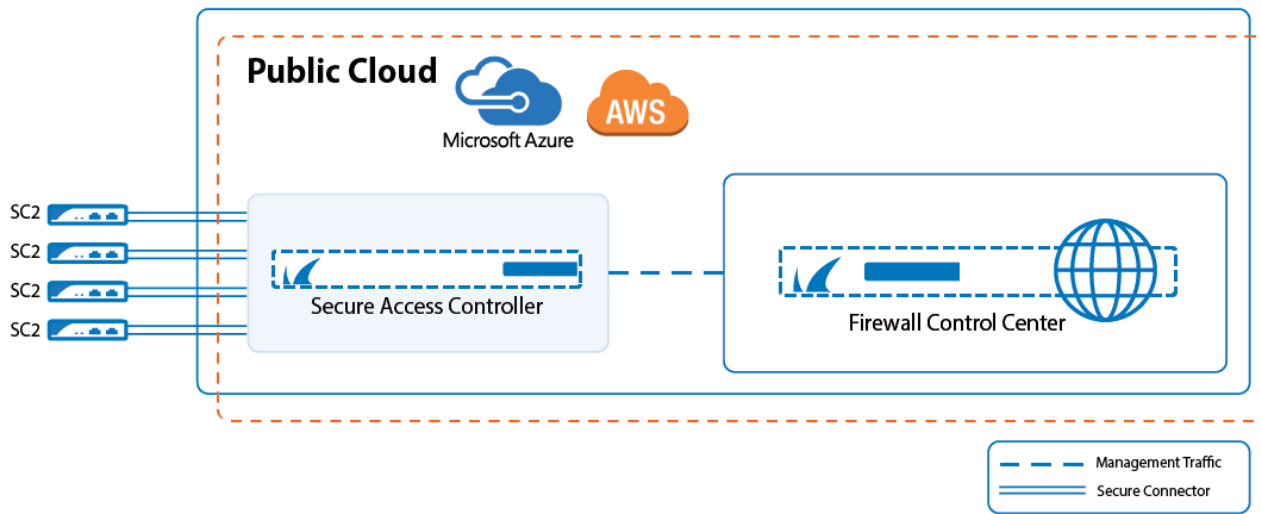


A LEGO Stormtrooper figure stands next to a LEGO toilet. The toilet has a white bowl and a brown base with several colored bricks (brown, green, pink) underneath. The Stormtrooper is white with black details and a black visor. The background is a soft, out-of-focus indoor setting.

Live Demo

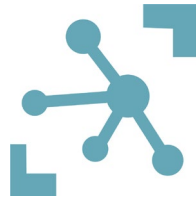


We are reusing our own products and APIs to build a simple solution for an otherwise very complex and error-prone setup.





- GETPAR, CCTOOL, REST API and modern web technologies
  - Not perfect yet, but we are on to it
  - Does not fit everyone's needs
- **Everything was already there**
  - Everyone could have created the same automatic functions with existing features





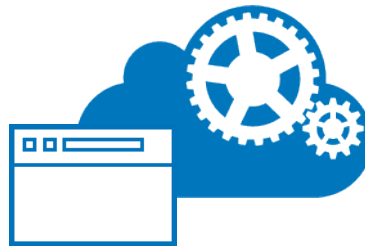
- Extended REST API
  - New and enhanced REST API endpoints
- Modern interface
  - With bi-directional synchronization option
- Extendable for other use cases and products



# Components Involved

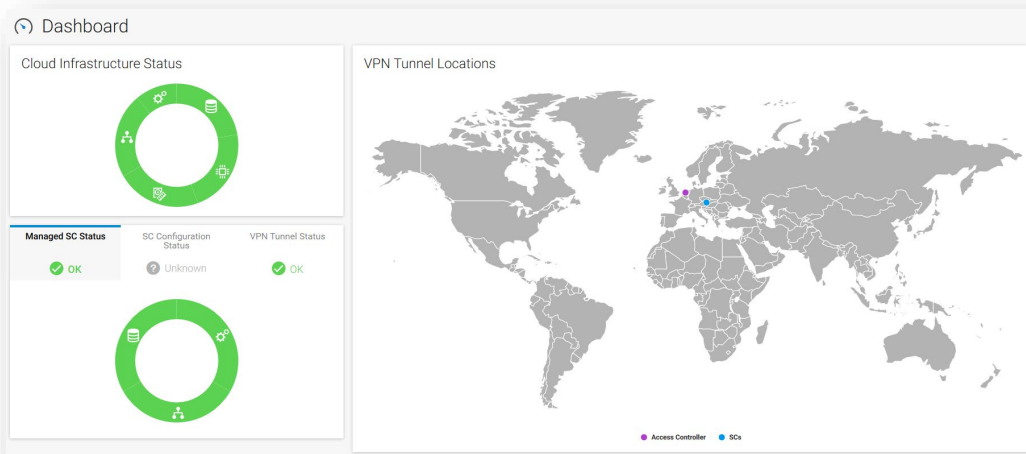


- **Barracuda Cloud service**
  - IoT Connect service
  - ZTD service
- **Azure or AWS**
  - Barracuda Control Center
  - Barracuda Secure Access Concentrator
- **On-Prem**
  - Barracuda Secure Connector





- Deployment of components must take place in *Azure / AWS*
  - No interaction with on-prem devices (except the SCs)
- Web UI has a limited set of features
  - It is not a replacement







- Environment deployed within a separate cluster
  - Some parameters are read-only or even hidden for now
- Configuration changes will be possible soon
  - Synchronization to IoT Connect web UI where useful



# Configuration Templates

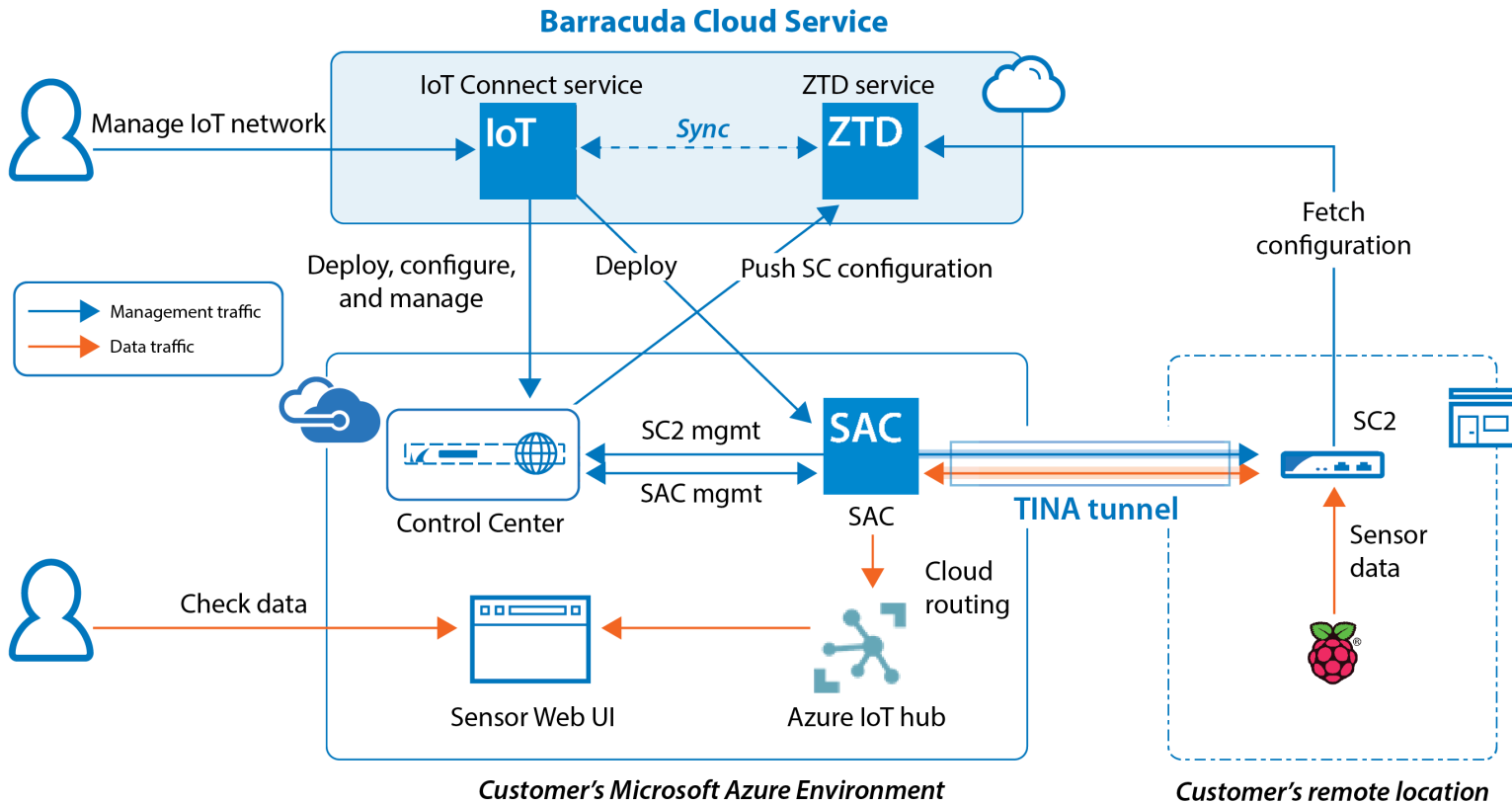


- Currently for internal use only
  - We're trying to remove bugs before official release
  - Limited to SC configuration
- Where the real magic happens

```
{
  "name": "nCsk-sclan-Lan2",
  "type": "sclan",
  "properties": [
    {
      "name": "mode",
      "stringValue": "Mapped"
    },
    {
      "name": "lanPort",
      "stringValue": "Lan2"
    },
    {
      "name": "dhcpServer",
      "boolValue": true
    },
    {
      "name": "ipAddress",
      "stringValue": "172.16.16.1"
    },
    {
      "name": "netmask",
      "stringValue": "255.255.255.0"
    },
    {
      "name": "dhcpStartIp",
      "stringValue": "172.16.16.100"
    },
    {
      "name": "dhcpEndIp",
      "stringValue": "172.16.16.200"
    }
  ]
}
```



# Barracuda IoT Connect Demo Architecture



A LEGO Stormtrooper figure stands next to a LEGO toilet. The toilet has a white bowl and a brown base with several colored bricks (brown, green, pink) underneath. The Stormtrooper is white with black details and a black visor. The background is a soft, out-of-focus indoor setting.

Live Demo



# Thank you

 Barracuda®  
**TECHSUMMIT19**  
BARRACUDA TECHNICAL SUMMIT