

# Rollout Guidelines

## Data Loss Prevention

Conducting a phishing simulation is easier when you have the right tools. The following tips and content will help you plan and execute your campaign your way, so you can train and inform effectively.

- Choose the email, **Data Classified Wrong**, and landing page, **You've Been Phished**, from the Content Center and build your campaign around them.
- Link the landing page to the **Data Loss Prevention** module so that employees who click the link can learn more about the topic (optional).
- Use the Data Loss Prevention **Spotlight** and **Infographic** to supplement training by distributing as desired.
- As always, contact your Barracuda PhishLine support representative with questions or if you would like assistance.

### Email Data Classified Wrong

Attention, {email:firstName} {email:lastName}

We have learned that you have been classifying information on the company server incorrectly. While no information has been compromised it is very important that you understand our policies.

**Review Company Policies**

You have one week to review the policies or face possible disciplinary actions. Thank you for your immediate attention to this matter.

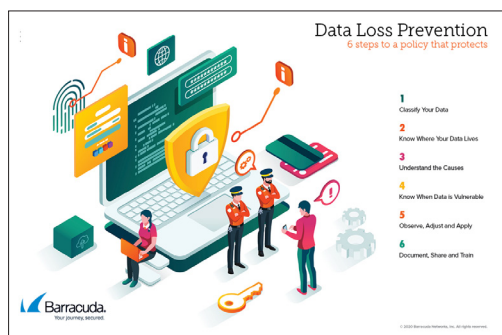
### Landing Page Phished Tiles



### Spotlight



### Infographic



### Training Module A103A—17

