
Managing Domains

<https://campus.barracuda.com/doc/3211295/>

If you make setting changes, allow a few minutes for the changes to take effect.

Your Barracuda Email Security Service only accepts emails addressed to domains that it is configured to recognize. After adding and verifying all domains you want the service to manage, you can customize policies and settings for each domain.

Manage a Domain

To manage a domain,

1. Log in to your Barracuda Email Security Service, click the **Domains** tab, and click **Manage** in the **Domain Options** column for the domain you want to manage.
2. The **Overview > Dashboard** page displays a summary of inbound and outbound email statistics and indicates the domain you are managing. A message displays at the top of the page indicating you are managing settings for the selected domain. You can now customize settings for the selected domain.
3. Once you have completed your settings, go to the **Overview > Dashboard**, and click **Return to domain management** at the top of the page.

Configure Policy for Individual Domains

To configure a policy for an individual domains, go to the **Domains** page. In the **Domains Manager** table, click **Manage** in the **Domain Options** column to view the Message Log, view Statistics, and manage all per-domain settings for the selected domain.

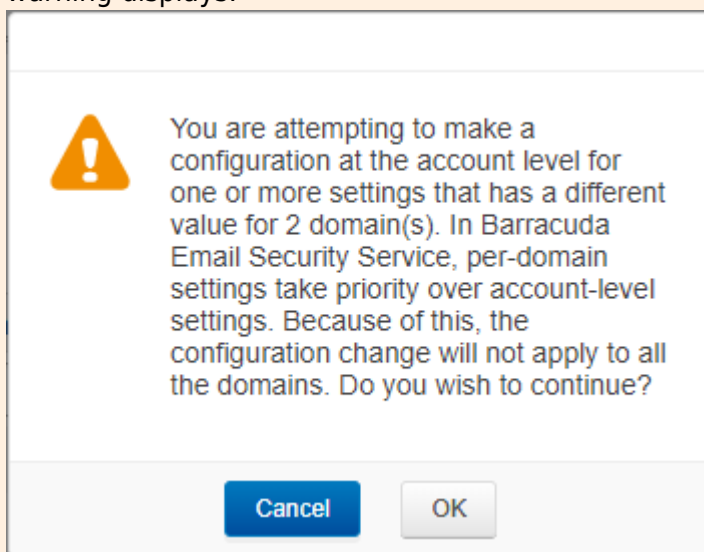
Domain-Level Settings

Domains you add and verify are initially configured with the specified default global settings. Once you are managing an individual domain, the same Message Log, Inbound Settings, and other tabs display, but the **Domains** tab is not visible. At the top of the **Overview > Dashboard** page, the following message displays:

You are now managing settings for <domain name>. Return to account management.

Click **Return to account management** to manage global settings for all domains, or to manage settings and policies for another domain.

When managing a particular domain, the settings you change apply to that domain specifically and override global settings for that domain. If you attempt to make a configuration change at the account level for a setting that is different for one or more domains at the domain-level, a warning displays:



If the administrator deletes a domain, a dialog box prompts for confirmation of deletion. For details about domain settings, see the **Domains > Settings** page, and click **Help**.

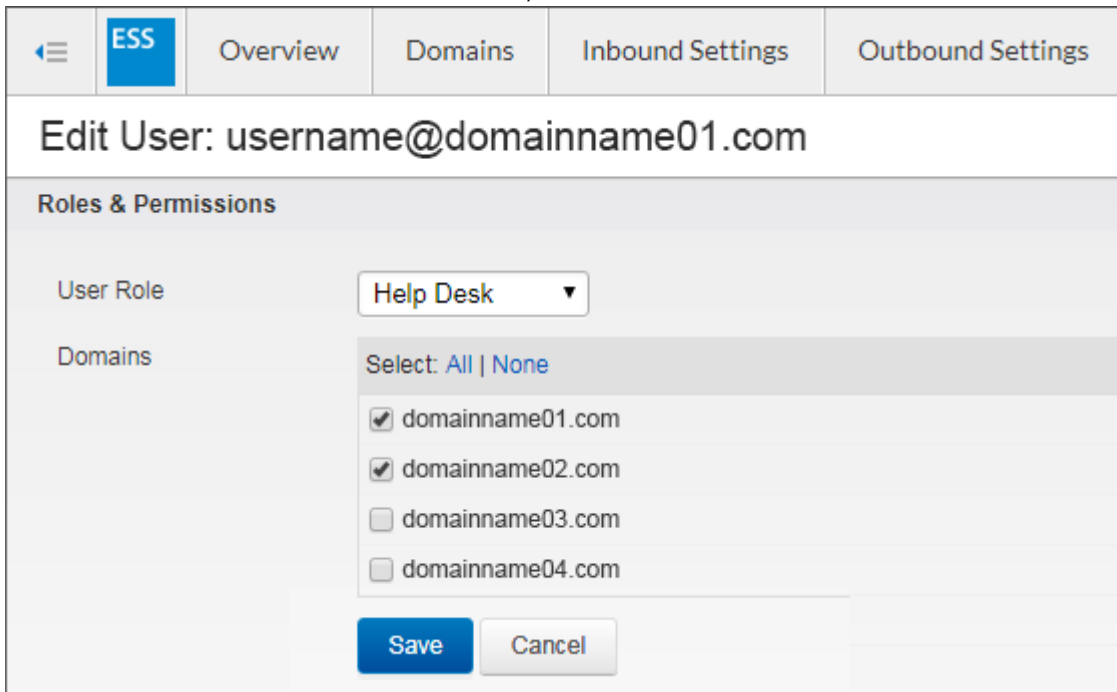
Assign User Roles and Designate Domain Administrators

Assign user roles and optionally select verified domains you want the user to manage to set up delegated administration. User roles include:

- **Administrator** – An administrator can view and modify all aspects of all domains, and configure global and domain-level settings.
- **Domain administrator** – A domain administrator can configure domain-level settings and view all domain settings and users for the assigned domains.
- **Help Desk** – In the Help Desk role, users can deliver messages, view message headers, view domain-level settings, and view all domain settings and users for the assigned domains. Note that the Help Desk role cannot view message body on a user's account.
- **User** – A user can configure user-level settings on their own account.

You can assign a user role, and optionally select verified domains:

1. Go to the **Users > Users List** page, and click **Edit** in the **Actions** column to the right of an **Enabled** user.
2. In the **Edit User** page, select the **User Role** from the drop-down menu.
3. To assign the user as a domain administrator, select either **Domain Admin** or **Help Desk** as from the **User Role** drop-down menu.
4. Click **All** to select all available domains, or select individual domains:



ESS Overview Domains Inbound Settings Outbound Settings

Edit User: username@domainname01.com

Roles & Permissions

User Role: Help Desk

Domains: Select: All | None

- domainname01.com
- domainname02.com
- domainname03.com
- domainname04.com

Save Cancel

5. Click **Save**.

This user can now manage inbound and outbound email policies for the assigned domains in the Barracuda Email Security Service.

Figures

1. configuration_warning.png
2. AssignDomain.png

© Barracuda Networks Inc., 2021 The information contained within this document is confidential and proprietary to Barracuda Networks Inc. No portion of this document may be copied, distributed, publicized or used for other than internal documentary purposes without the written consent of an official representative of Barracuda Networks Inc. All specifications are subject to change without notice. Barracuda Networks Inc. assumes no responsibility for any inaccuracies in this document. Barracuda Networks Inc. reserves the right to change, modify, transfer, or otherwise revise this publication without notice.