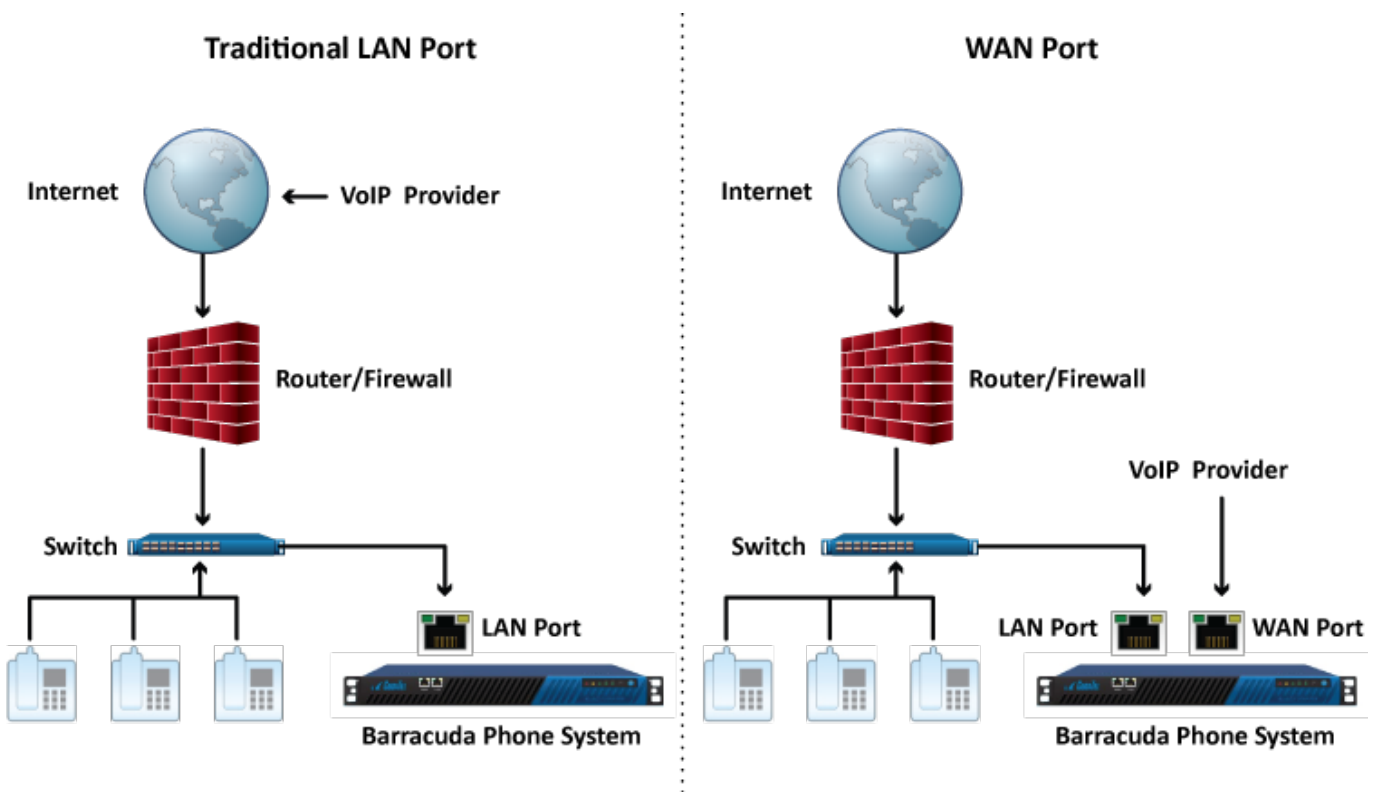


VoIP Providers

<https://campus.barracuda.com/doc/39823657/>

The primary way to connect the Barracuda Phone System to the outside world is via an IP connection and an SIP account, sometimes called SIP trunks. Service providers usually give you one or more SIP accounts with accompanying credentials (username and password) and connection information. The connection itself is made over an IP network, using either an existing Internet connection or via a dedicated IP circuit installed by the VoIP provider. When using a traditional Internet connection, all VoIP provider traffic flows in and out of the Barracuda Phone System LAN port. When there is a dedicated circuit, the provider supplies an Ethernet connection that uses the Barracuda Phone System WAN port. The following figure illustrates these two scenarios:



In this Section

Figures

1. VoIP_deployment.png

© Barracuda Networks Inc., 2019 The information contained within this document is confidential and proprietary to Barracuda Networks Inc. No portion of this document may be copied, distributed, publicized or used for other than internal documentary purposes without the written consent of an official representative of Barracuda Networks Inc. All specifications are subject to change without notice. Barracuda Networks Inc. assumes no responsibility for any inaccuracies in this document. Barracuda Networks Inc. reserves the right to change, modify, transfer, or otherwise revise this publication without notice.