

Step 2 - Install Barracuda PST Enterprise

<https://campus.barracuda.com/doc/42042295/>

This article refers to the Barracuda PST Enterprise version 5.2 or higher. Before installing Barracuda PST Enterprise, you must first complete [Step 1 - System Requirements](#).

This article describes how to install the PST Enterprise core components and the Copy Agent server (if required, to facilitate copying PST files from client machines to a central server). Run the installation on the server designated to host the PST Enterprise website. If you receive an alert that a prerequisite is not installed, go back and install the prerequisite.

Download the [Barracuda PST Enterprise Installation Package](#) to your server.

For Office 365 (Exchange Online-Only or Hybrid) Deployments

If you intend to use Barracuda PST Enterprise with Office 365, it is recommended you complete the following steps prior to installation.

1. Create the PST Enterprise service account in Active Directory and ensure this account is synchronised to Office 365. You should carefully note the requirements for this account as specified in the Office 365 Deployments section of [Step 1 - System Requirements](#), in particular the domain suffix.
2. Log in to a server where PowerShell v2 is installed with an account authorized to use PowerShell.
3. Launch PowerShell (**Start > All Programs > Accessories > Windows PowerShell > Windows PowerShell**).
4. Run the following command:
`Set-ExecutionPolicy Unrestricted`
5. Click **Y** to confirm the change, and then run the following command:
`$UserCredential = Get-Credential`
6. When prompted, enter the username and password for the Exchange Online administrator account, and then run the following command:
`$PSSession = New-PSSession -ConfigurationName Microsoft.Exchange -
ConnectionUri https://outlook.office365.com/powershell-liveid/ -
Credential $UserCredential -Authentication Basic -AllowRedirection`

The ConnectionUri **https://outlook.office365.com/powershell-liveid/** is the most commonly used, however, for the correct ConnectionUri for your region, see the Microsoft TechNet article [Connect to Exchange Online PowerShell](#).

7. Warnings display; this is expected. Run the following command:
`Import-PSSession $PSSession`
8. Warnings display; this is expected. Run the following command:
`Get-Mailbox | Add-MailboxPermission -User PSTEnterpriseAdmin -
AccessRights FullAccess -AutoMapping $false`
where *PSTEnterpriseServiceAccount* is the name of the PST Enterprise Service Account you have created.

The PST Enterprise Administrative account will now have full access to the mailboxes hosted online. This is required in order to obtain mailbox data using Exchange Autodiscover.

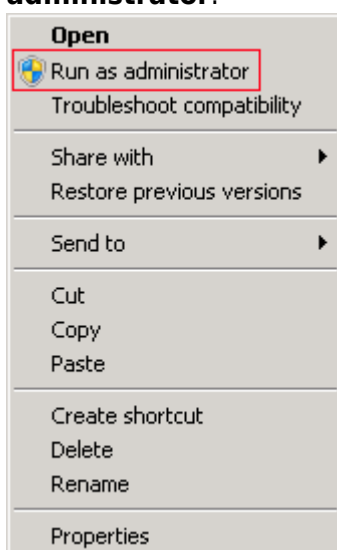
If you are currently migrating mailboxes from on-premises to Office 365, or provisioning new users in Office 365, you must run these steps again to ensure the PST Enterprise service account has sufficient rights to these mailboxes.

Now proceed with the next section to install PST Enterprise.

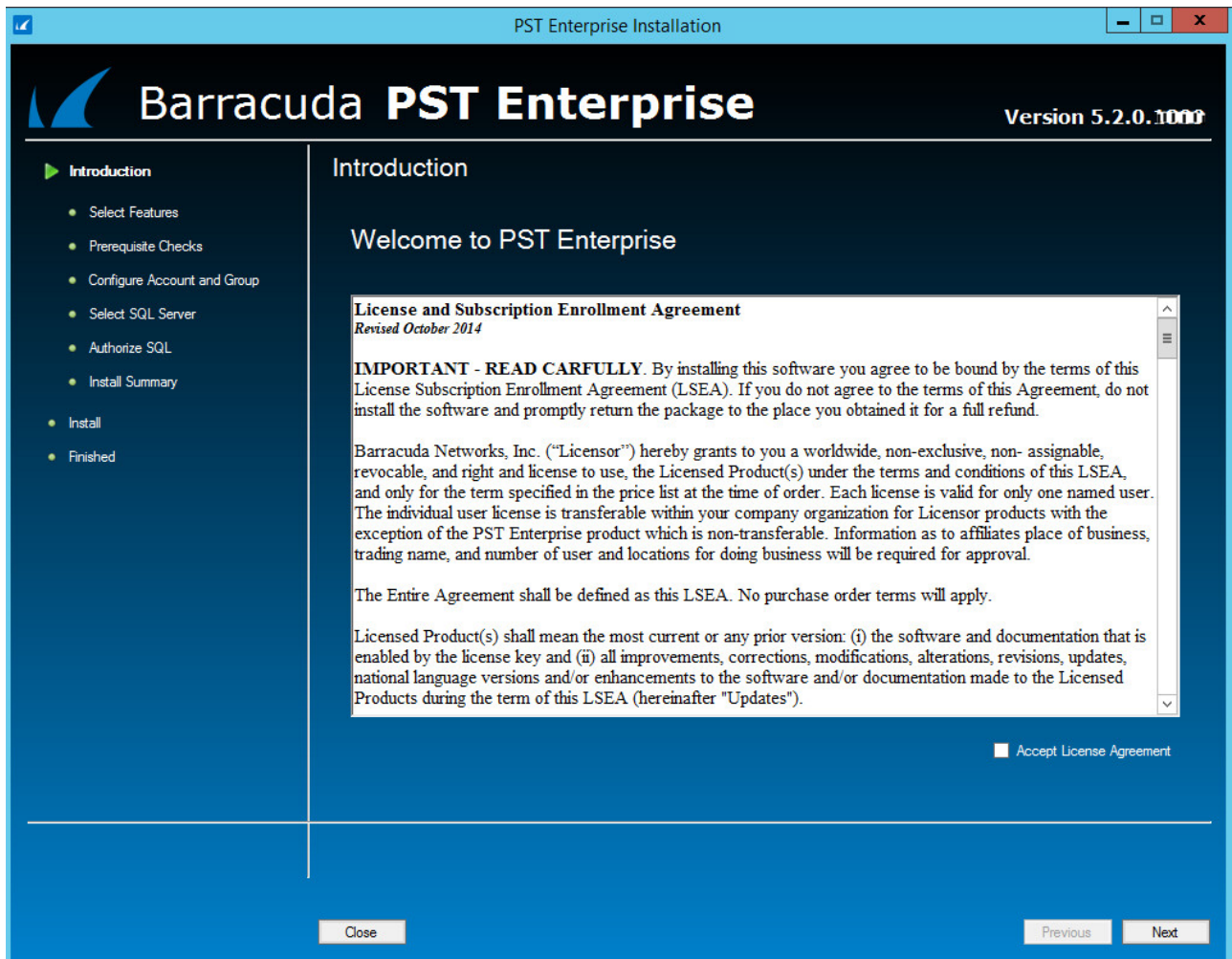
Installation Process for all Environments

To run the installation process,

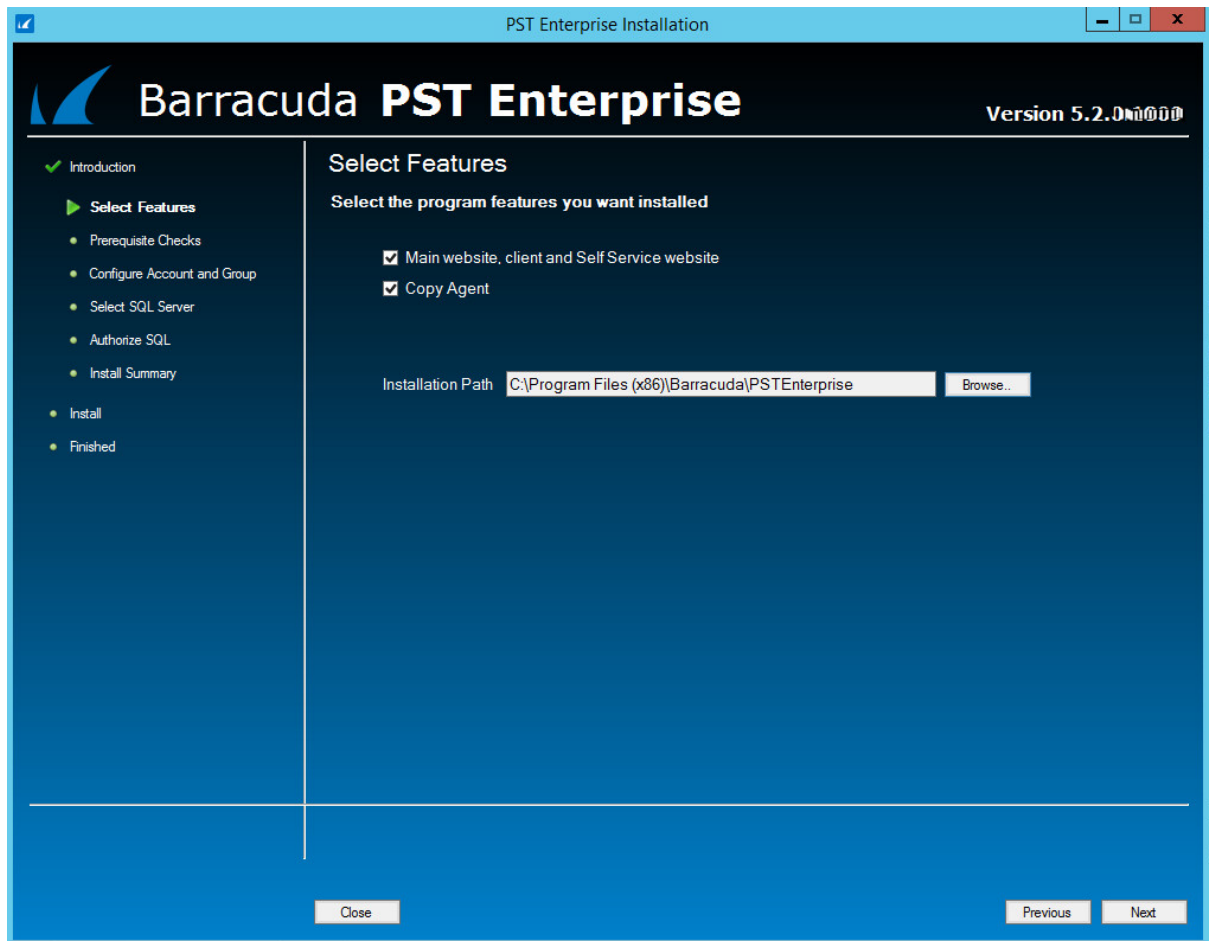
1. On the PST Enterprise server, right-click **PSTEnterprise.<version>.exe**, and click **Run as administrator**:



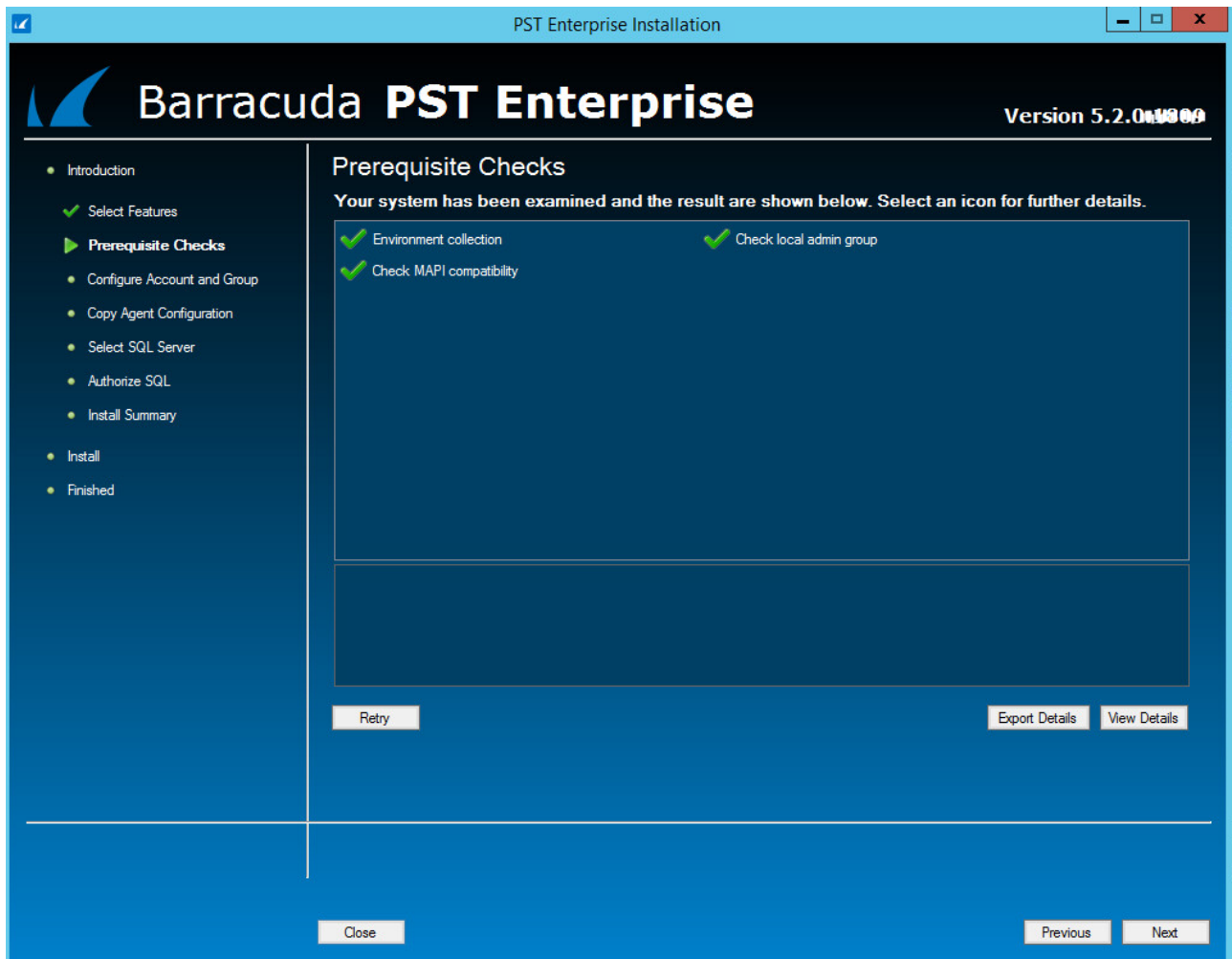
2. The installation wizard launches and the **License Agreement** page displays. Read the license, select **I accept the terms in the license agreement** if you agree, and click **Next** to proceed:



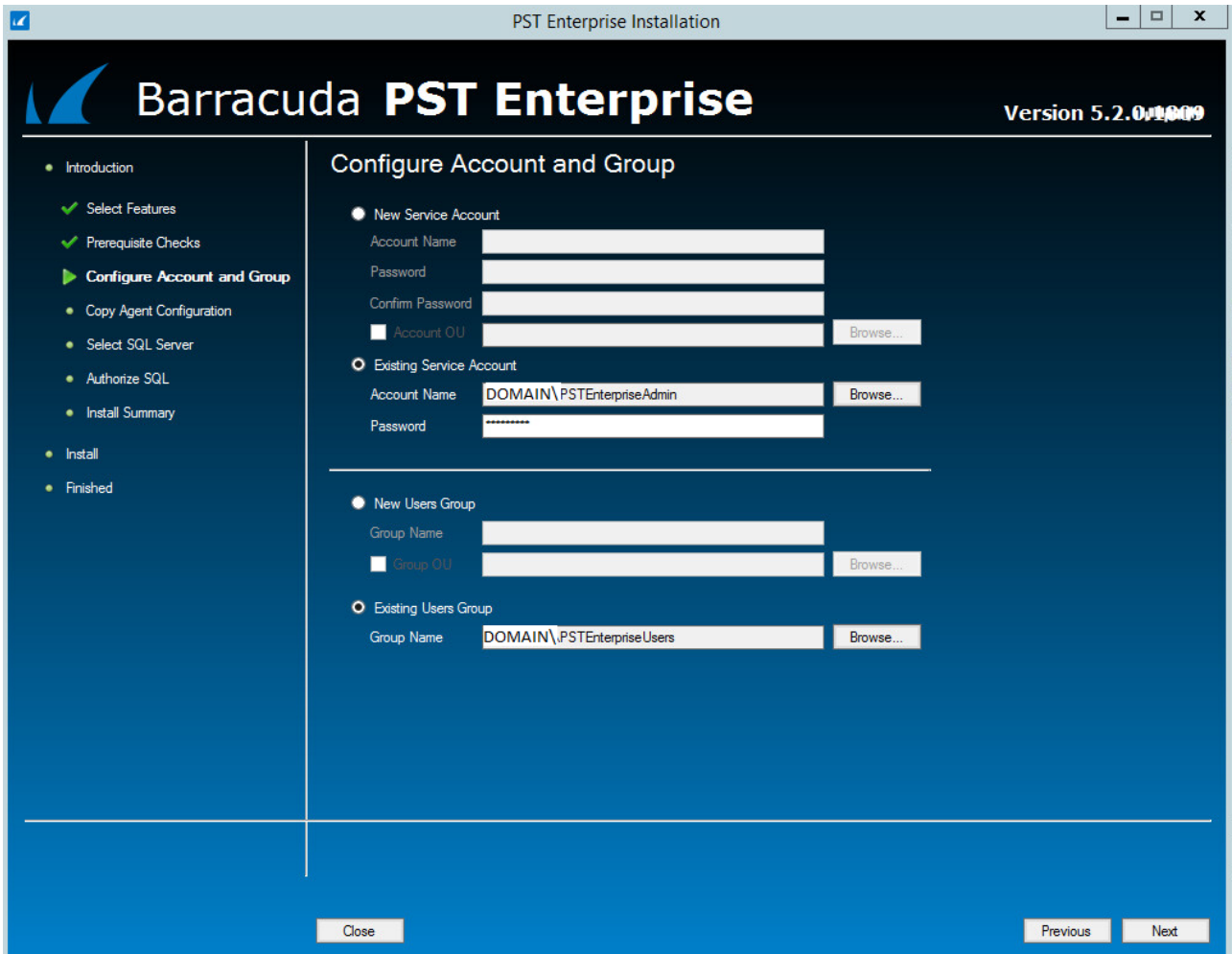
3. Use the **Select Features** page to specify the components you want to install:
1. **Main website, client and Self Service website** – Core Barracuda PST Enterprise components; this component is mandatory.
 2. **Copy Agent** – the Copy Agent services; this component is optional and only required if you wish to copy or move PST files on disk. It can be installed on the PST Enterprise server, or any other dedicated machines.



4. By default, the installation directory is set to **C:\Program Files (x86)\Barracuda\PSTEnterprise**. To modify the installation directory, click **Browse**, and then navigate to the desired directory. Click **Next**.
5. The Deployment Analyzer completes the prerequisite checks. If there are any warnings or failures, you must click **View Details** and correct the errors before you can continue. Click **Next**.



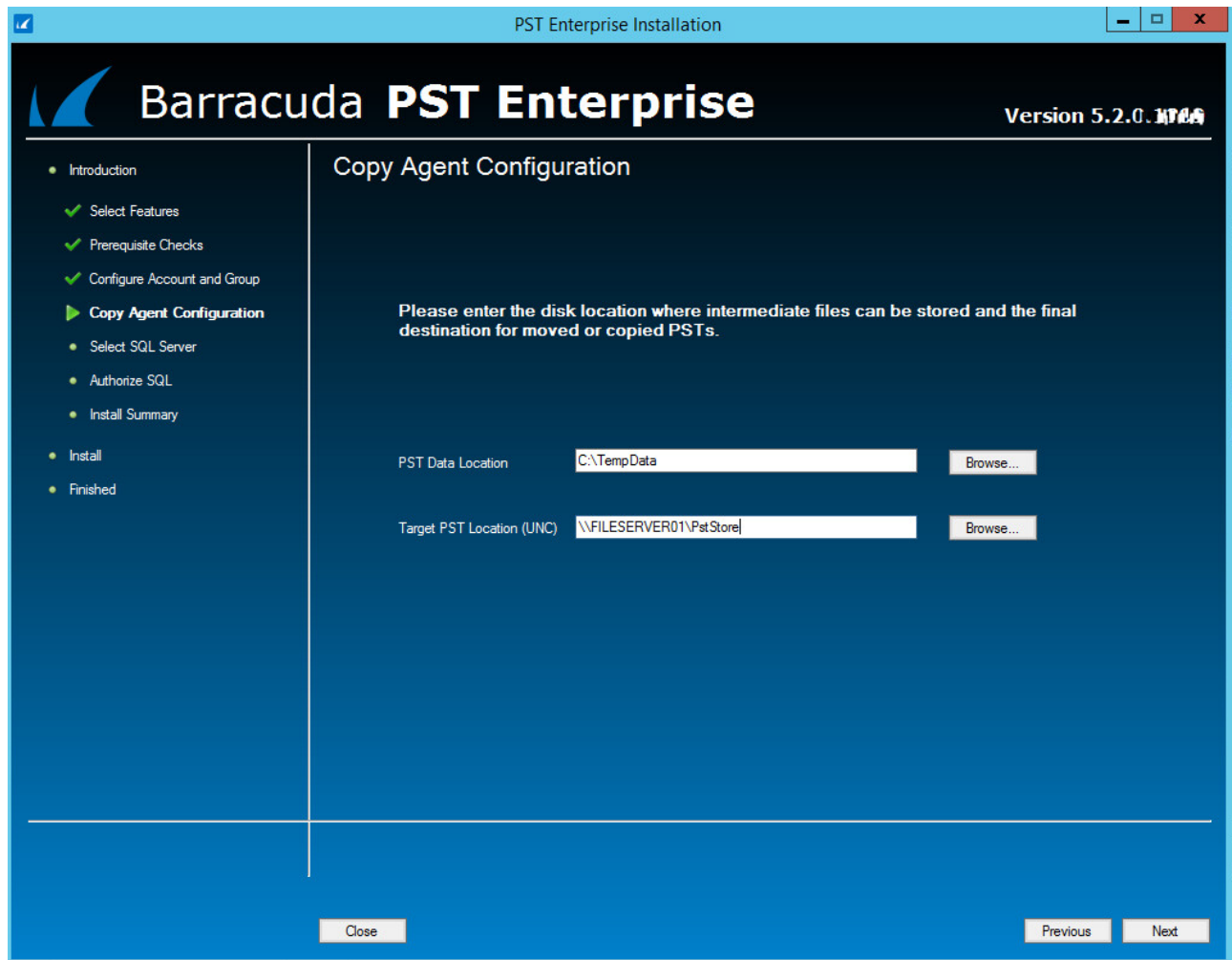
6. Click **OK**. On the **Configure Account and Group** page, enter the PST Enterprise Service account and User group details. You can choose to create a new account and/or security group using the installer, or selected an existing account or group:



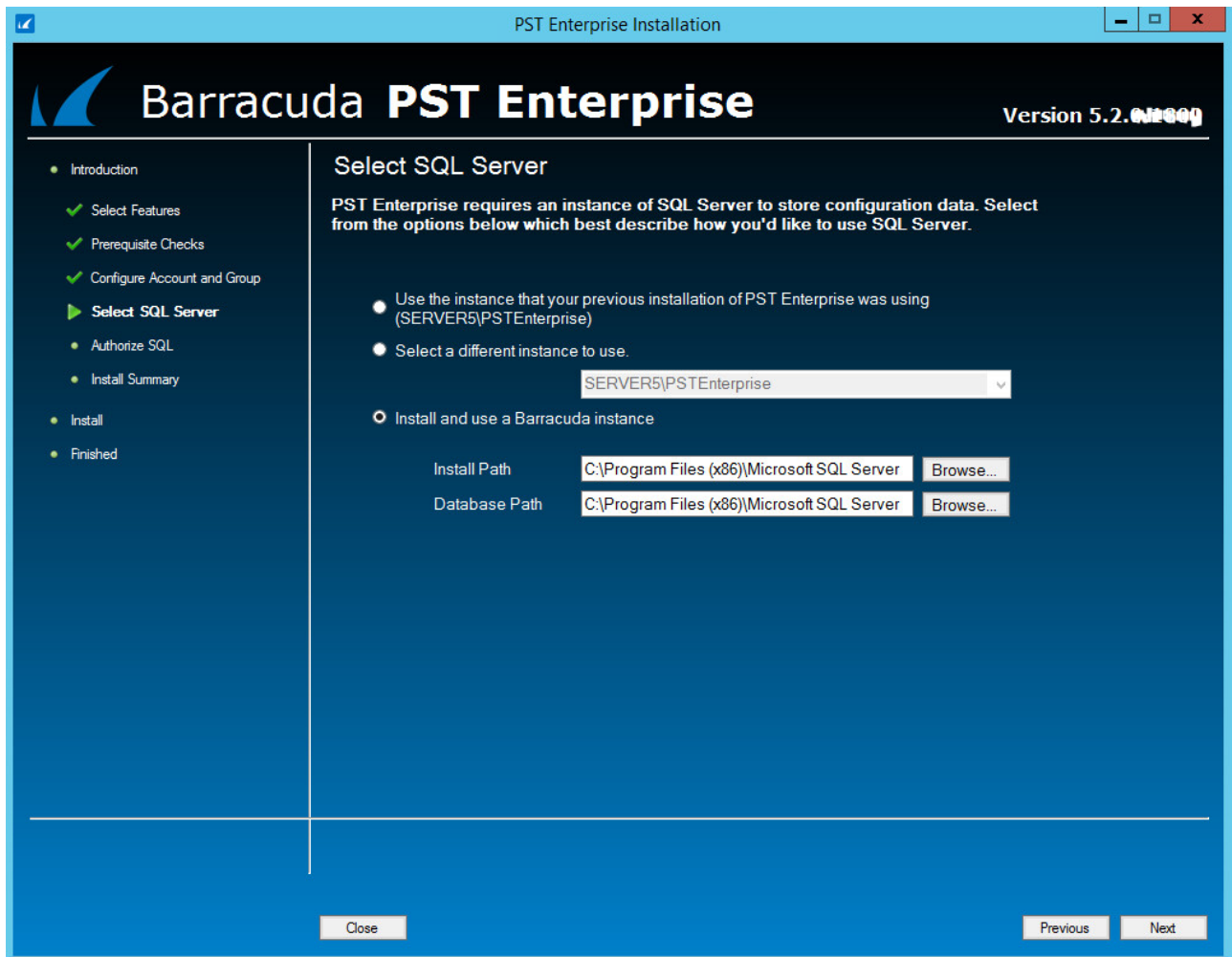
For multi-domain environments, see [How to Create a Service Account and Security Group in a Multi-Domain Infrastructure During Installation](#).

The **Users Group** is used to control who can log in to the website. The **Service Account** is used to authenticate to Exchange Autodiscover and to run the PST Enterprise Services on the PST Enterprise server. For both the group and account names, you can use the default name, enter a custom name, or click **Browse** to navigate to and select an existing group or account name. Once you click **Next**, the user account currently running the installer is automatically added as a user to the Users group. If you are using an existing Account Name, the entered password is verified before proceeding. Once verified, the account is granted login rights to all mailboxes in the Exchange Organization (for Office 365 environments this must be manually granted as per the *Office 365 (Exchange online only or hybrid deployments)* section).

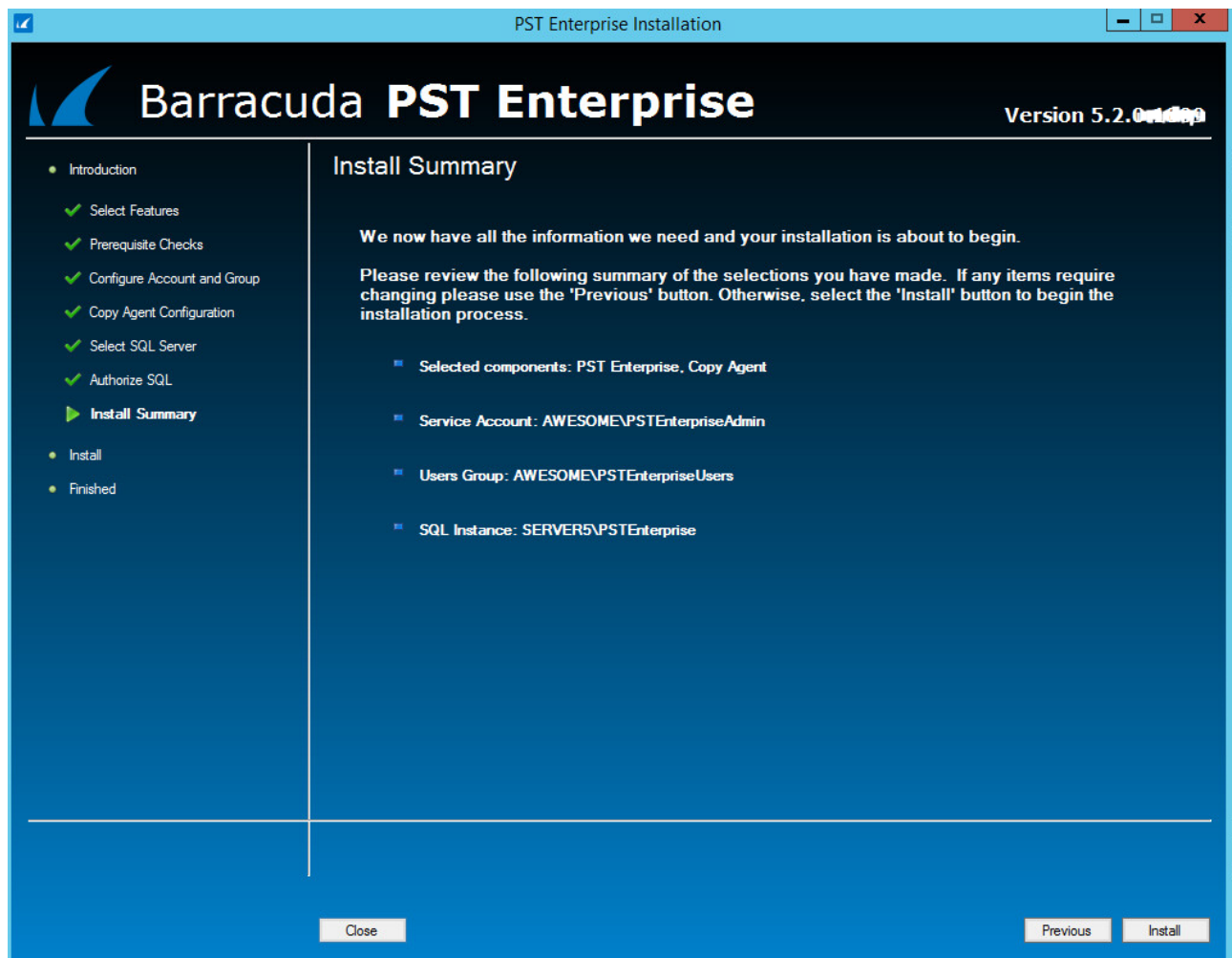
- If you have selected the Copy Agent component for installation, you are prompted to specify the PST Data location and the Target PST location:



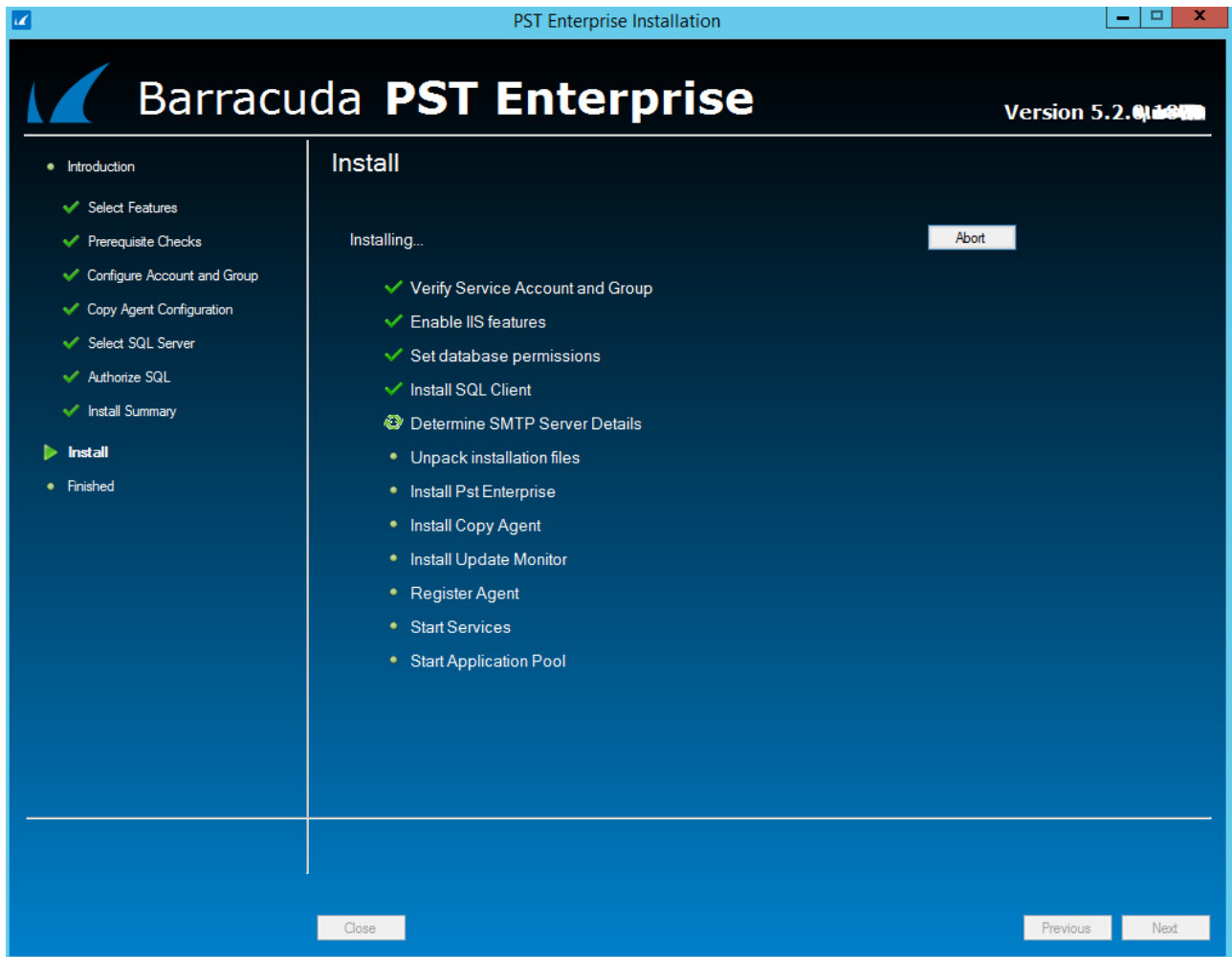
1. **PST Enterprise Server** – If you are not installing on the PST Enterprise server itself, you are prompted to enter the name of the server where you installed the PST Enterprise application.
2. **PST Data Location** – Enter the path or click **Browse** to specify a local directory on the PST Enterprise Copy Agent server. For example, **C:\TempData**. This directory is used to hold temporary data when PST files are copied or moved.
3. **Target PST Location (UNC)** – Enter or click **Browse** to specify the UNC path to the target location where PSTs are to be copied and moved. This is used by the PST Enterprise Copy Agent to store the final PSTs after processing, for example **\\FILESERVER01\PstStore**.
8. Click **Next**. The **Select SQL Server** page displays. You should now choose the desired configuration:



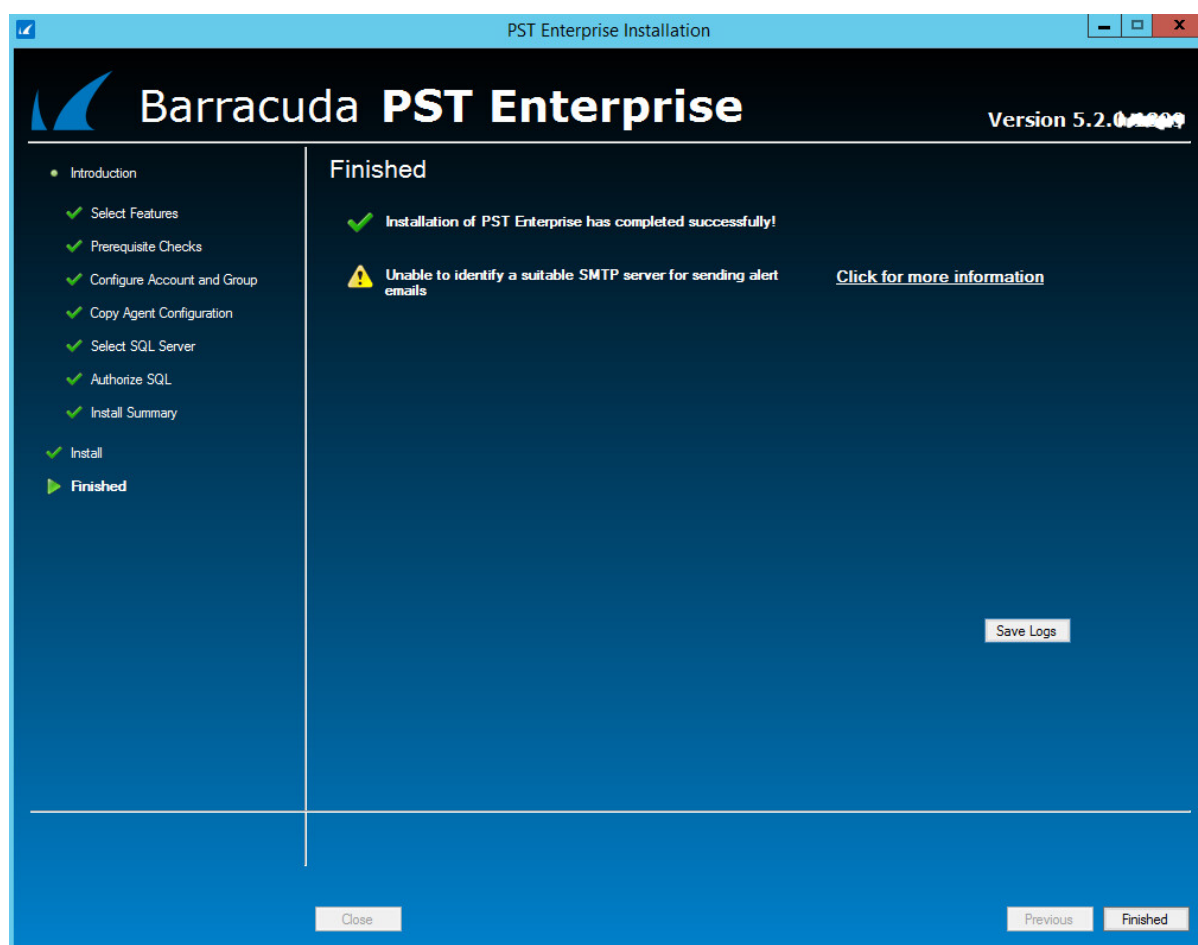
1. **Select a different instance to use** – Select this option to select a SQL Server instance on another server.
 1. Type in the field or click the drop-down menu to select a SQL Server instance on another server (the SQL Browser service must be running for the instance to be visible).
 2. If the user running the installer does not have sufficient rights to log in to the specified instance, you are prompted to enter the SQL administrator credentials. See [SQL Database Permissions](#) for more information on the required rights.
 2. **Install and use a Barracuda instance** – Select this option if you used the pre-installer to install a SQL Express 2008 R2 instance on the PST Enterprise server. You can specify the installation and database directories for the SQL Server installation by clicking **Browse** in **Install Path** and **Database Path**.
9. Click **Next** and the **Install Summary** page displays the entered configuration. Click **Install** to start the installation:



10. While the installation is running, the progress displays:



11. When the installation is complete, click **Finished** to close the installer. Any errors or warnings display on the status screen; click on the displayed link for advice on resolving any issues.
1. if required, click **Save Logs** to save a copy of the installation logging to **C:\PSTEnterpriseInstallLogs**.



To launch the PST Enterprise administration website, go to **Start > All Programs > PST Enterprise**.

Continue with [Step 3 - Set Up Barracuda PST Enterprise](#) to configure PST Enterprise and deploy the PST Enterprise Client and (optionally) additional Copy Agent servers.

Figures

1. run_as_admin.png
2. PSTInstall1.PNG
3. PSTInstall2.PNG
4. PSTInstall3.PNG
5. PSTInstall4.PNG
6. PSTInstall5.PNG
7. PSTInstall10.PNG
8. PSTInstall7.PNG
9. PSTInstall8.PNG
10. PSTInstall9.PNG

© Barracuda Networks Inc., 2024 The information contained within this document is confidential and proprietary to Barracuda Networks Inc. No portion of this document may be copied, distributed, publicized or used for other than internal documentary purposes without the written consent of an official representative of Barracuda Networks Inc. All specifications are subject to change without notice. Barracuda Networks Inc. assumes no responsibility for any inaccuracies in this document. Barracuda Networks Inc. reserves the right to change, modify, transfer, or otherwise revise this publication without notice.