

MailSite Server Deployment

<https://campus.barracuda.com/doc/42045596/>

This article refers to the Barracuda Message Archiver version 5.0 and higher, and the MailSite Fusion version 10.

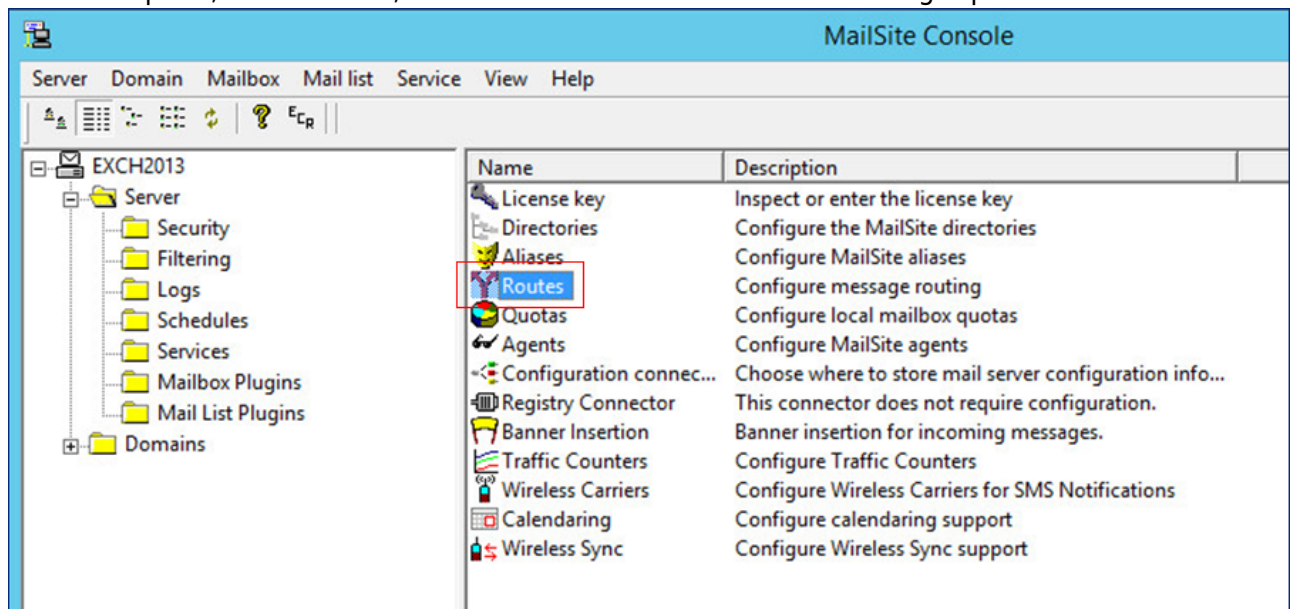
There are two methods to enable MailSite Server journaling to the Barracuda Message Archiver, push method and pull method.

Push Method

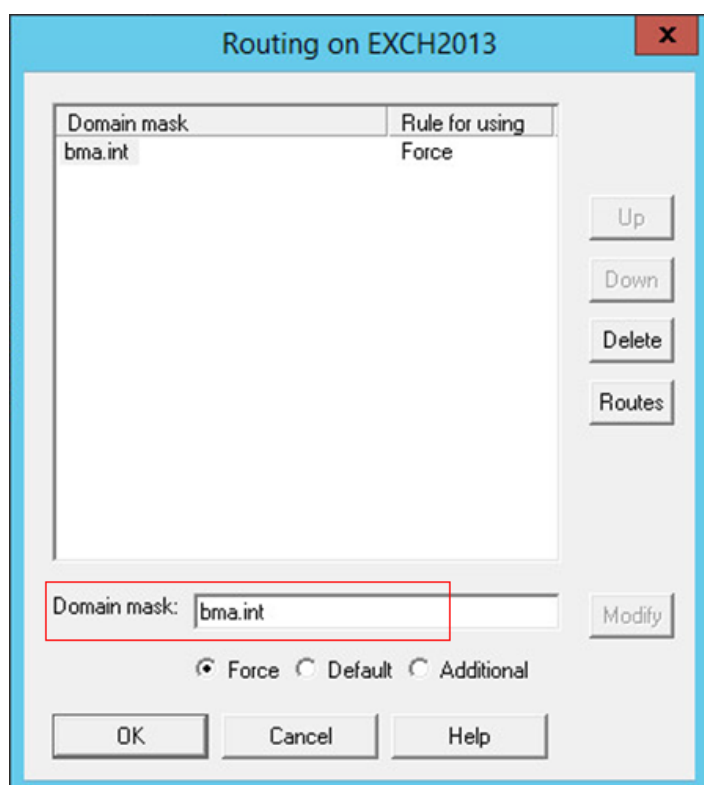
Use the following steps to enable push journaling.

Step 1. Create a Route.

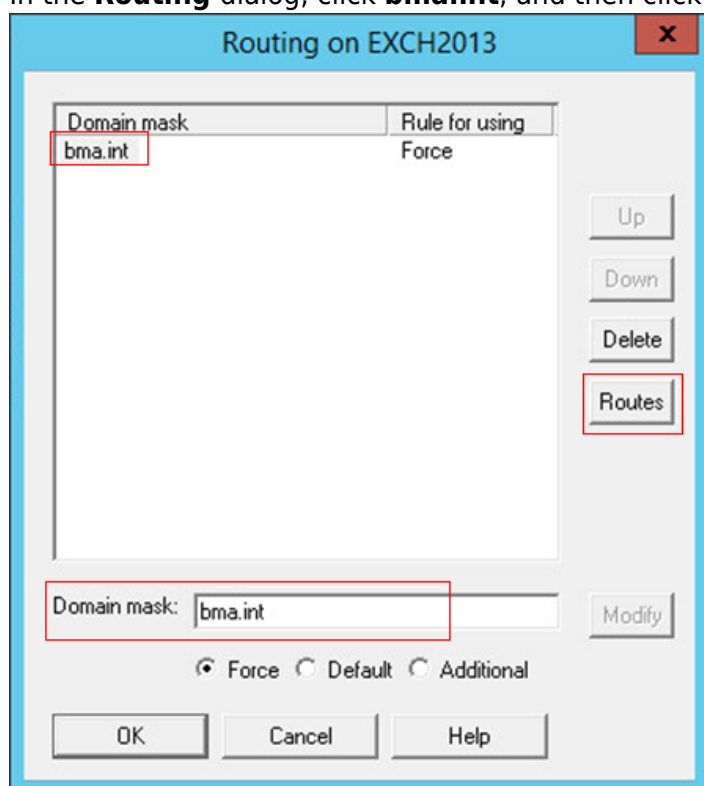
1. Log in to the MailSite Console.
2. In the left pane, click **Server**, and then double-click **Routes** in the right pane:



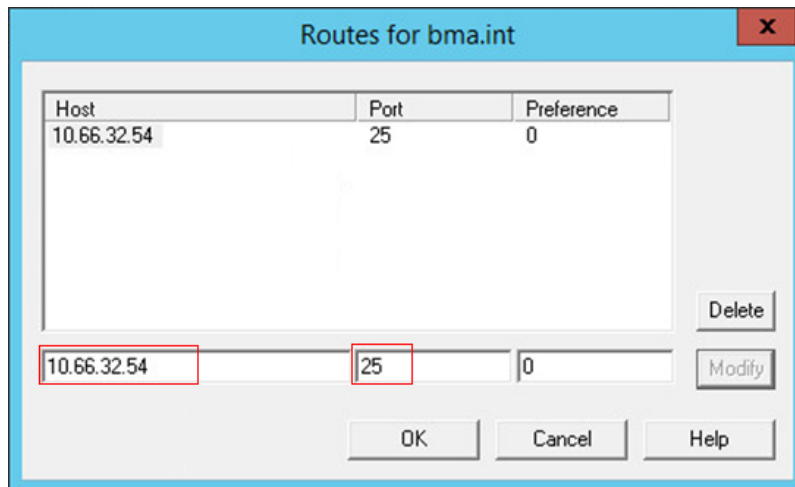
3. The **Routing** dialog box displays. In the **Domain mask** field, enter `bma.int`, select **Force**, and then click **Add**:



4. In the **Routing** dialog, click **bma.int**, and then click **Routes**:



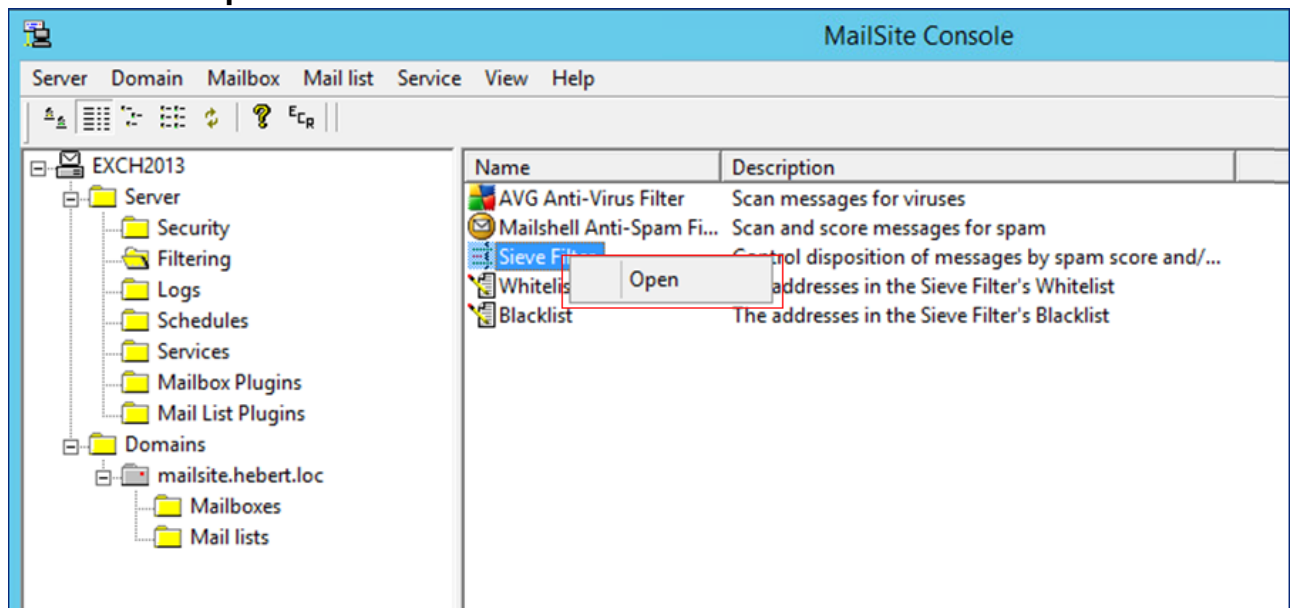
5. In the **Routes** dialog, enter the Barracuda Message Archiver IP address and SMTP port in the associated fields, and then click **Add**:



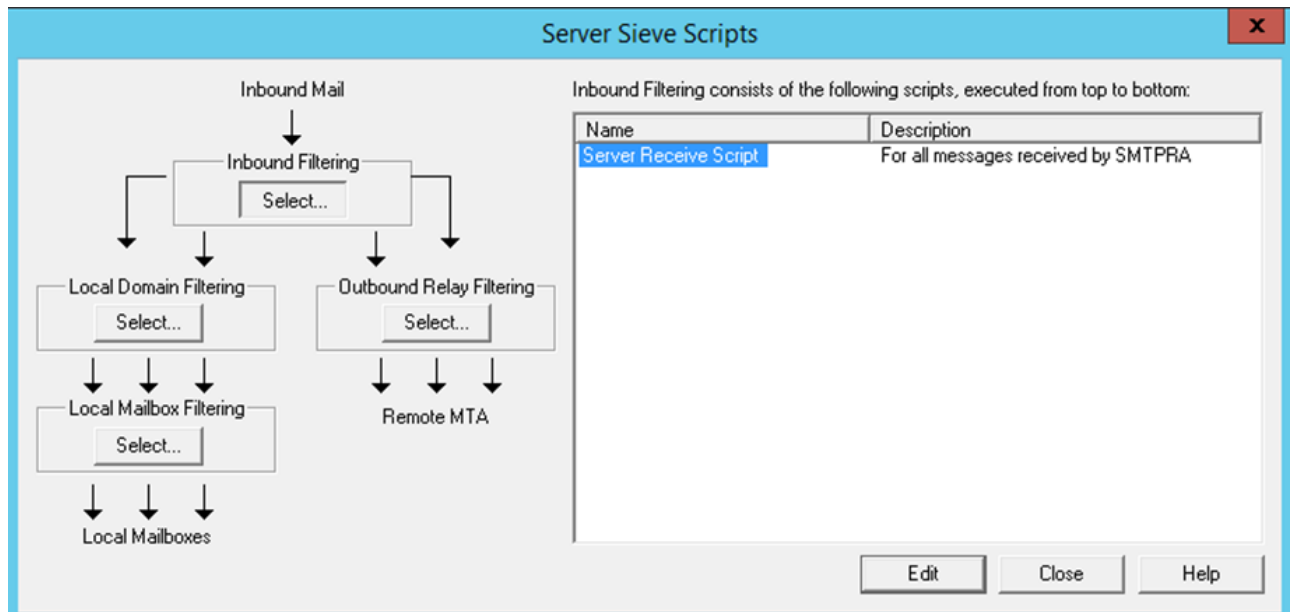
6. Click **OK** to close the **Routes** dialog, and then click **OK** to close the **Routing** dialog box. The route is created.

Step 2. Create a Sieve Filter.

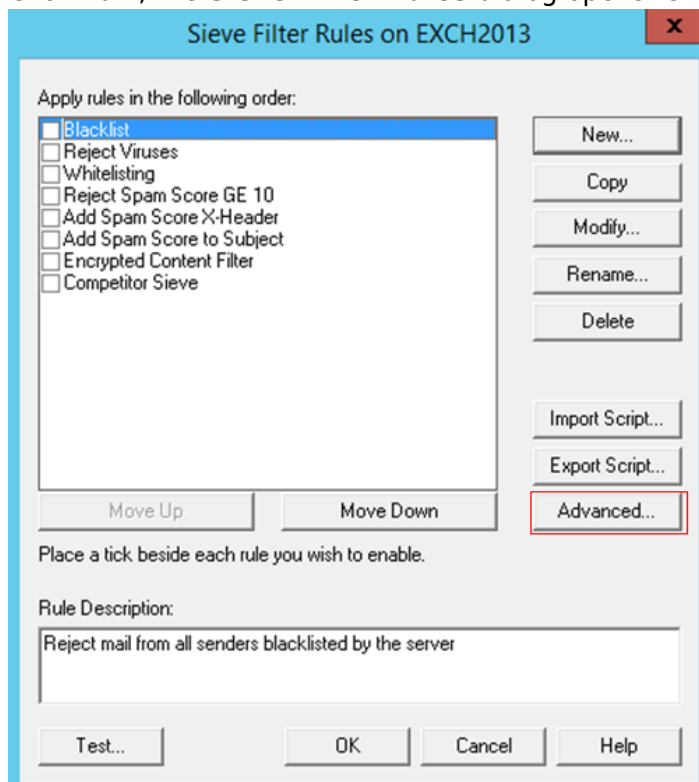
1. In the left pane of the MailSite Console, expand **Server**, click **Filtering**, right-click **Sieve Filter**, and then click **Open**:



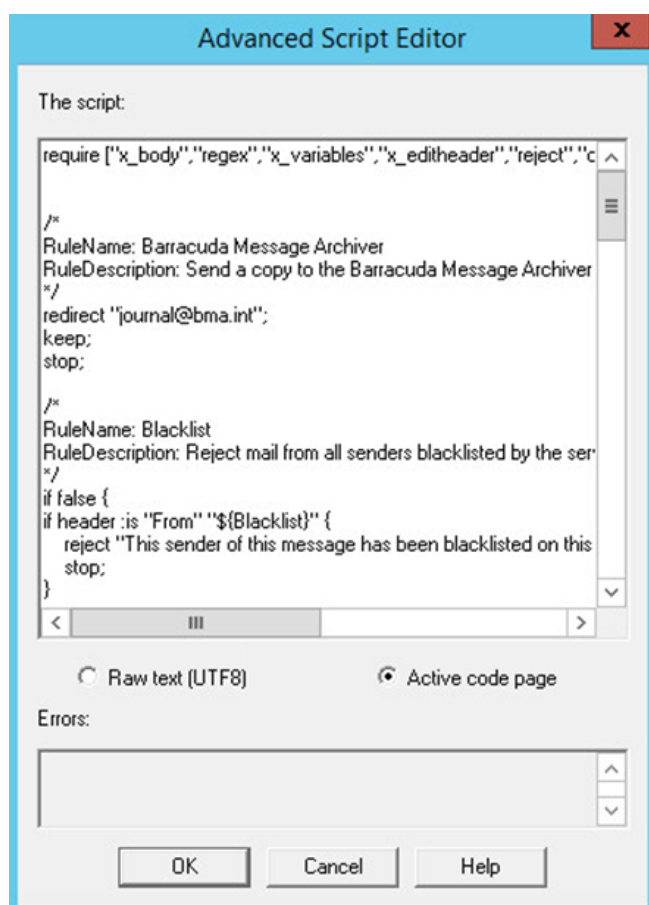
2. The **Server Sieve Scripts** dialog opens. Click **Server Receive Script**:



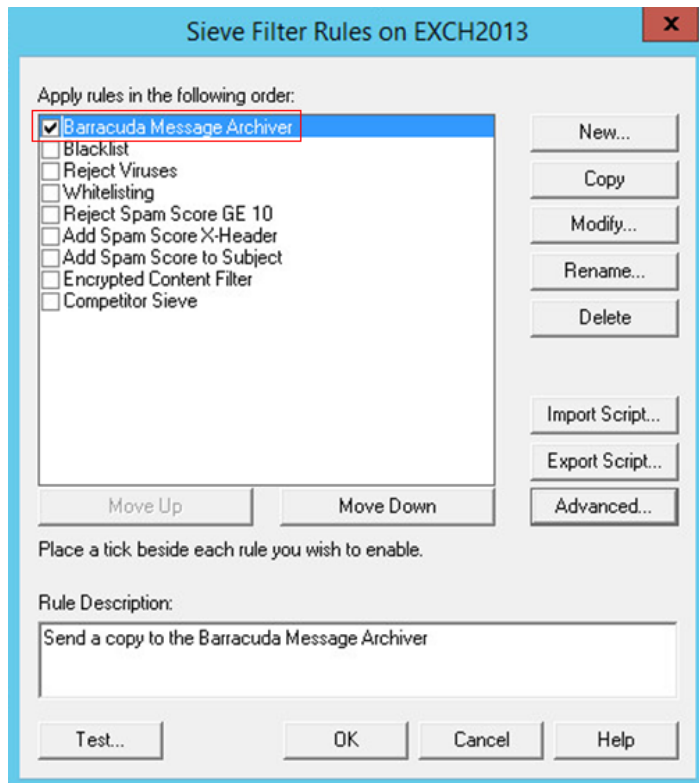
3. Click **Edit**; the **Sieve Filter Rules** dialog opens. Click **Advanced**:



4. In the **Advanced Script Editor**, under the require line, paste the following script:
- ```
/*
RuleName: Barracuda Message Archiver
RuleDescription: Send a copy of messages via SMTP to the Barracuda
Message Archiver
*/
redirect "journal@bma.int";
keep;
stop;
```



5. In the **Advanced Script Editor**, click **OK**.
6. In the **Sieve Filter Rules** dialog, verify that the **Barracuda Message Archiver** rule is turned on:



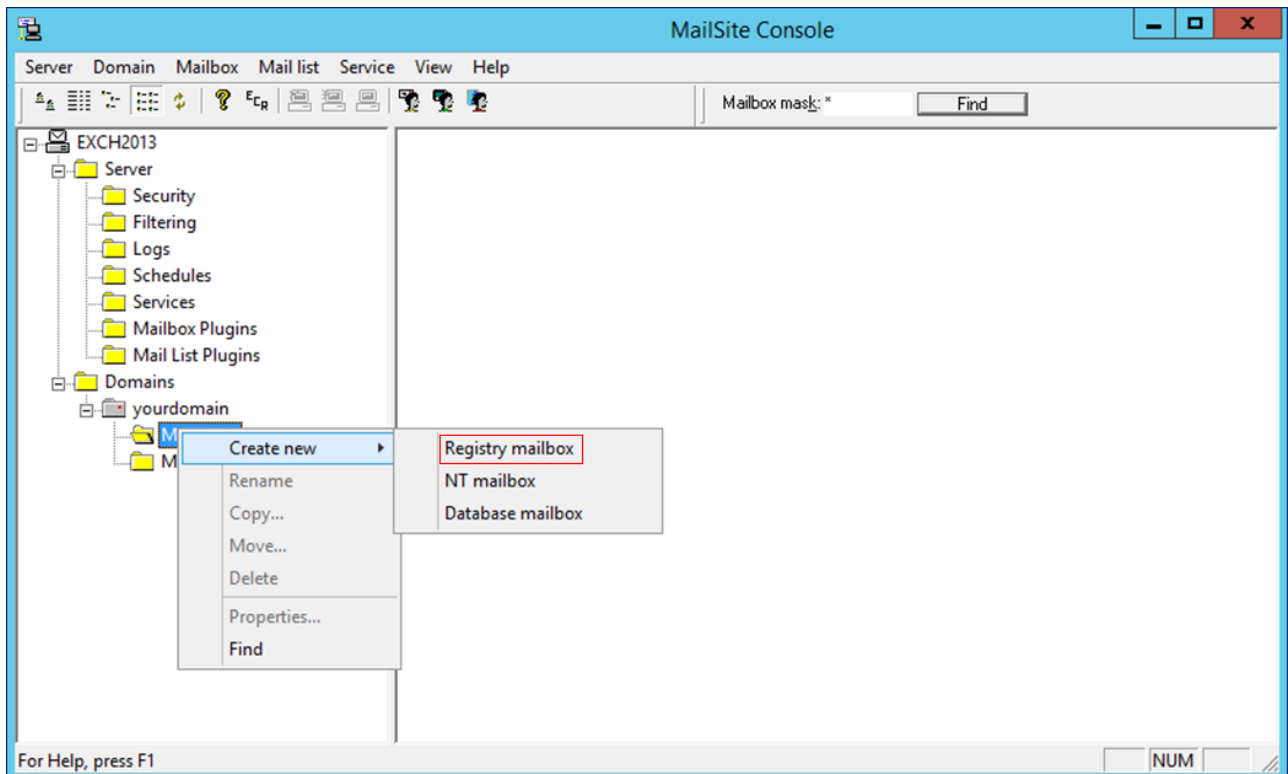
7. Click **OK** to create the sieve filter.

## Pull Method

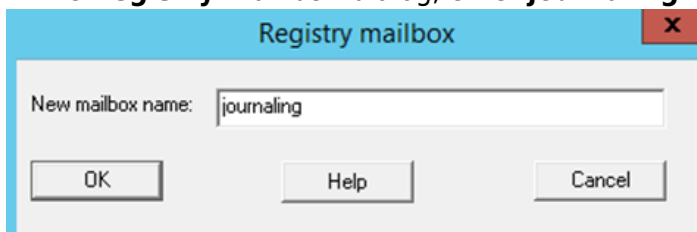
Use the following steps to create journaling mailbox from which the Barracuda Message Archiver pulls messages.

### Step 1. Create a Journaling Mailbox.

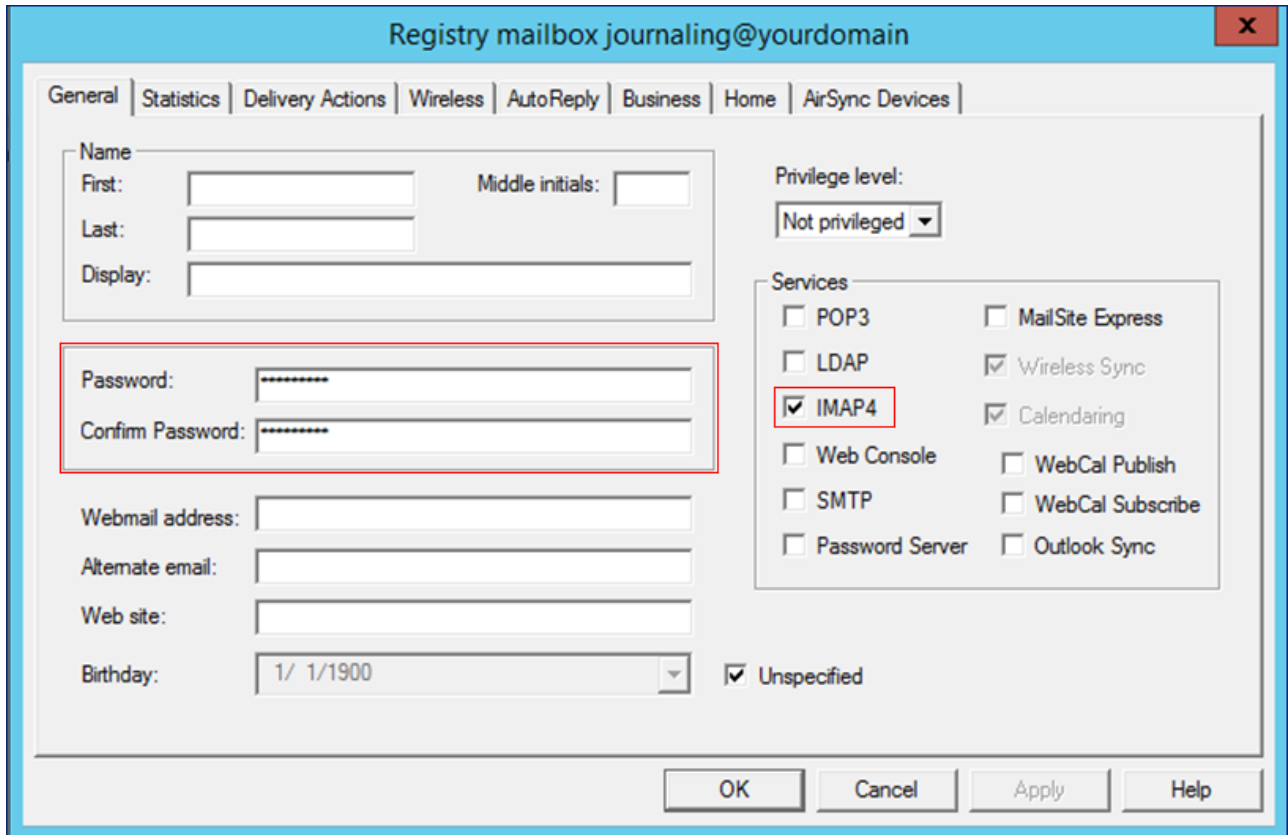
1. Log in to the MailSite Console.
2. In the left pane, click **Server > Domains > <yourdomain>** name, right-click **Mailboxes**, and click **Create new > Registry mailbox**:



3. In the **Registry mailbox** dialog, enter **journaling** in the **New mailbox name** field:



4. Click **OK**. In the MailSite Console, right-click the new journaling mailbox, and then click **Properties**.
5. In the **Registry** dialog, click the **General** tab. Change your password, and disable all services except **IMAP4**:



Registry mailbox journaling@yourdomain

General | Statistics | Delivery Actions | Wireless | AutoReply | Business | Home | AirSync Devices

Name  
First:  Middle initials:   
Last:   
Display:

Privilege level:  
Not privileged

Services  
☐ POP3 ☐ MailSite Express  
☐ LDAP ☒ Wireless Sync  
☒ IMAP4 ☒ Calendaring  
☐ Web Console ☐ WebCal Publish  
☐ SMTP ☐ WebCal Subscribe  
☐ Password Server ☐ Outlook Sync

Webmail address:   
Alternate email:   
Web site:   
Birthday:  1/ 1/1900

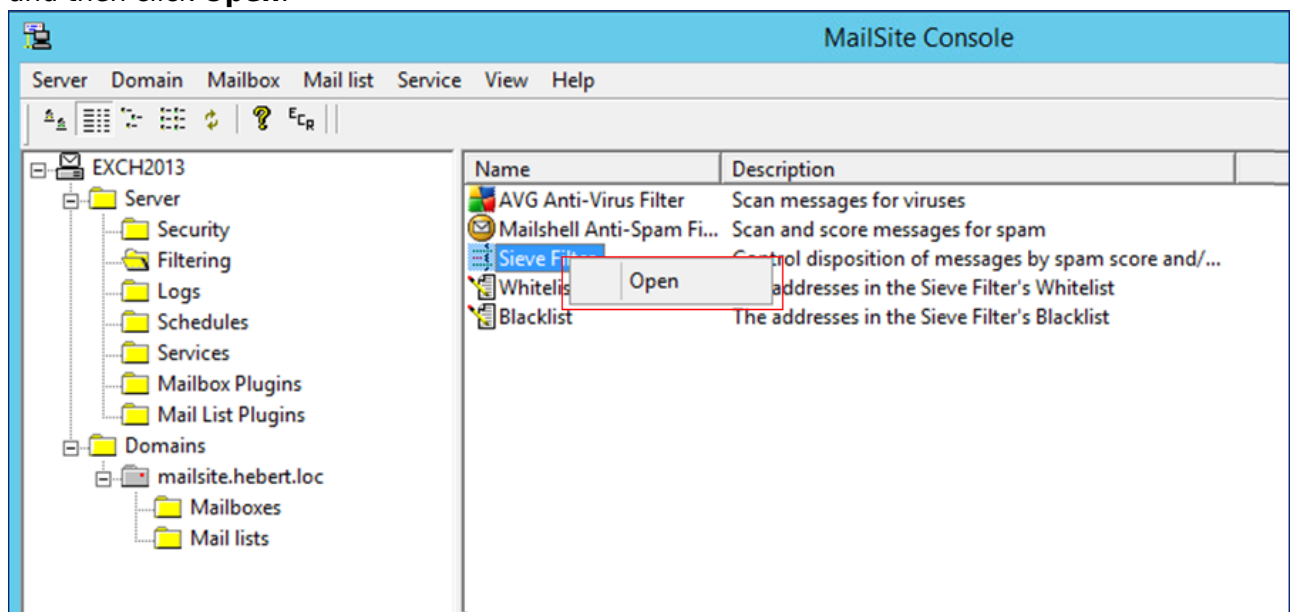
Unspecified

OK Cancel Apply Help

6. Click **OK** to create the journaling mailbox.

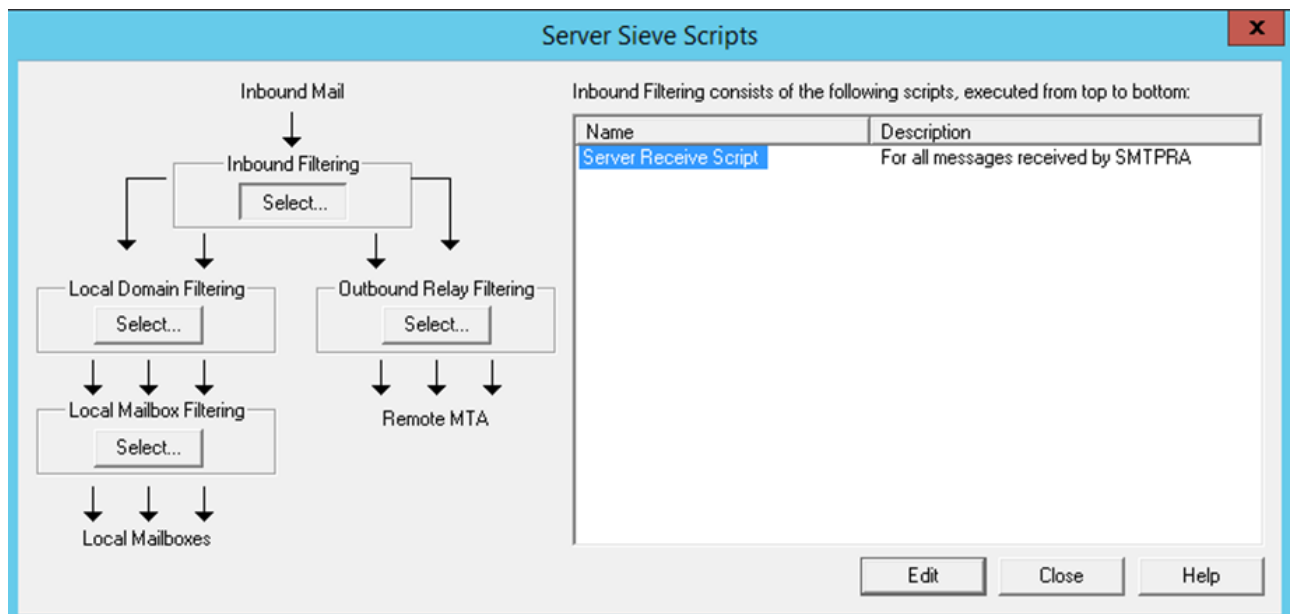
## Step 2. Create a Sieve Filter.

1. In the left pane of the MailSite Console, expand **Server**, click **Filtering**, right-click **Sieve Filter**, and then click **Open**:

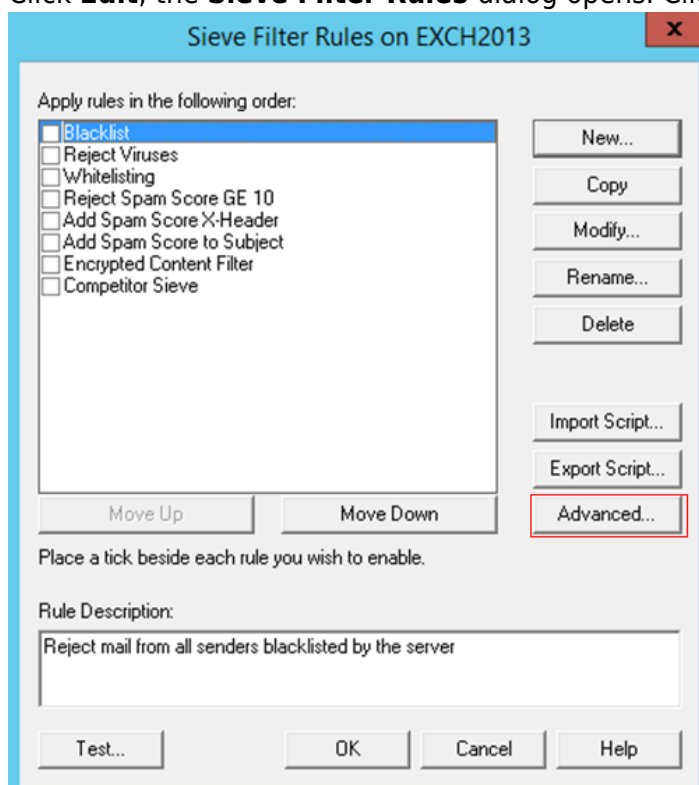


2. The **Server Sieve Scripts** dialog opens. Click **Server Receive Script**:



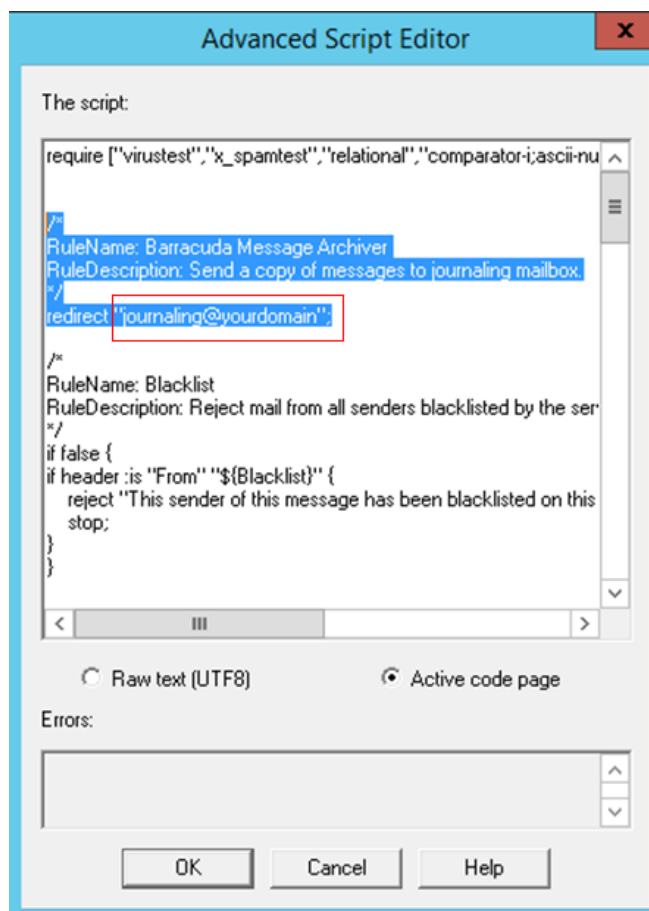


3. Click **Edit**; the **Sieve Filter Rules** dialog opens. Click **Advanced**:

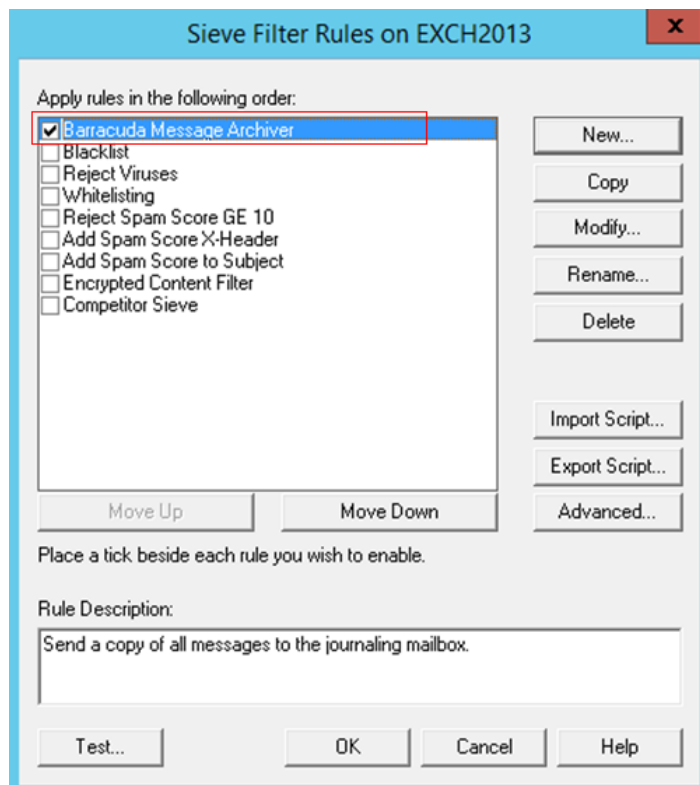


4. In the **Advanced Script Editor**, under the require line, paste the following script, replacing *journaling@yourdomain* with the email address of the journaling account you created in *Step 1*.  
 Create a Journaling Mailbox:

```
/*
RuleName: Barracuda Message Archiver
RuleDescription: Send a copy of messages to journaling mailbox.
*/
redirect "journaling@yourdomain";
```



5. In the **Advanced Script Editor**, click **OK**.
6. In the **Sieve Filter Rules** dialog, verify that the **Barracuda Message Archiver** rule is turned on:



7. Click **OK** to create the sieve filter.

## Figures

1. console01.png
2. routing01.png
3. routing02.png
4. routes01.png
5. console02.png
6. sieve.png
7. sievefilterrules.png
8. adv\_script.png
9. sievefilterrules02.png
10. console03.png
11. registrymailbox.png
12. registrymailbox03.png
13. console02.png
14. sieve.png
15. sievefilterrules.png
16. adv\_script2.png
17. sievefilterrules03.png

© Barracuda Networks Inc., 2024 The information contained within this document is confidential and proprietary to Barracuda Networks Inc. No portion of this document may be copied, distributed, publicized or used for other than internal documentary purposes without the written consent of an official representative of Barracuda Networks Inc. All specifications are subject to change without notice. Barracuda Networks Inc. assumes no responsibility for any inaccuracies in this document. Barracuda Networks Inc. reserves the right to change, modify, transfer, or otherwise revise this publication without notice.