

## How to Install the ArchiveOne Administration Console on a Separate Machine

<https://campus.barracuda.com/doc/43221244/>

The Barracuda ArchiveOne Admin Console is used to configure and manage ArchiveOne and is installed by default on the Archive Server. Additionally, you can install it on additional machines to administer ArchiveOne without logging in to the Archive Server, for example, from a Support Engineer's workstation.

Verify the system on which you want to install this component meets the [software and hardware prerequisites](#). Note that these machines require a 32-bit version of Outlook 2010 or 2013 installed (64-bit is not supported).

### Install ArchiveOne Admin Console

To install the ArchiveOne admin console component only:

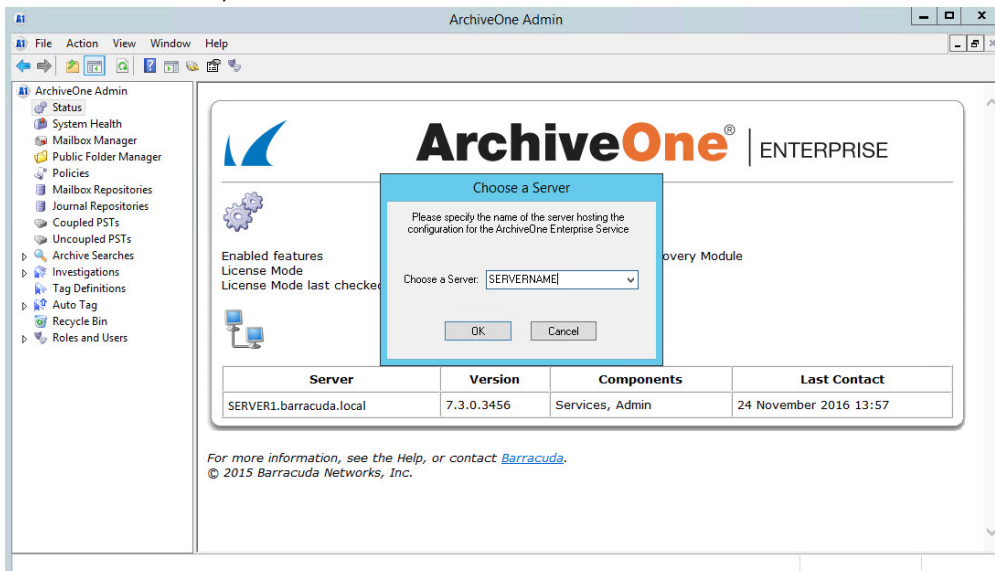
1. Right-click the **ArchiveOne Setup Enterprise.version.exe** and select **Run as administrator**.
2. The ArchiveOne package automatically extracts the necessary files and launches the installer.
3. On the **Introduction** step, review the license agreement, select **Accept License Agreement**, and click **Next** to proceed.
4. On the **Select Features** step, select the **Administration console**, and click **Next** to proceed.
  - Click **Browse** if you want to modify the installation directory. The default directory is **C:\Program Files (x86)\Barracuda\ArchiveOne**.
5. You are prompted for the name of the Archive server (the server where you installed the Core Service component), and click **Next**. You can enter either the hostname or the fully qualified domain name (FQDN).
6. The installer attempts to connect to the configuration data on the named server. If this succeeds, the **Install Summary** displays with the selected configuration options. Click **Install** to start the installation process.
  - If this fails, you are presented with a message with further details on how to correct the error.
7. The status of the installation process displays whilst the various steps are being completed. Once the installation successfully completes, review any outstanding actions (if reported), and click **Finished** to close the installer.
  - Click **Save Logs** if you want to save a zipped copy of the installation logs.

### Launch ArchiveOne Admin Console

To administer ArchiveOne, you must be a member of the [ArchiveOneUsers group](#) (by default called **ArchiveOneUsers**). If you have recently been added to the ArchiveOneUsers group, you may get a login error reporting your account is not a member of the group. This can be due to replication delays, or you may need to log off and log back in again for your group membership to update.

Once installation is complete, an ArchiveOne shortcut displays on the system desktop.

1. Launch ArchiveOne.
2. The first time you launch the console, you are prompted to select a server. Enter the Archive server hostname, and then click **OK** to connect.



3. You can now administer ArchiveOne from the system.

## Figures

### 1. ChooseServer.PNG

© Barracuda Networks Inc., 2019 The information contained within this document is confidential and proprietary to Barracuda Networks Inc. No portion of this document may be copied, distributed, publicized or used for other than internal documentary purposes without the written consent of an official representative of Barracuda Networks Inc. All specifications are subject to change without notice. Barracuda Networks Inc. assumes no responsibility for any inaccuracies in this document. Barracuda Networks Inc. reserves the right to change, modify, transfer, or otherwise revise this publication without notice.