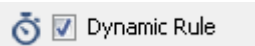


How to Create and Activate a Dynamic Rule

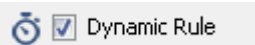
<https://campus.barracuda.com/doc/43846931/>

Dynamically activated rules are flagged by the clock icon. Dynamic access rules prevent the security vulnerabilities caused by forgetting to revoking service access that is needed only temporarily. If you create a dynamic rule, it is inactive by default and can be enabled on demand for a configured time span.

Create a Dynamic Access Rule

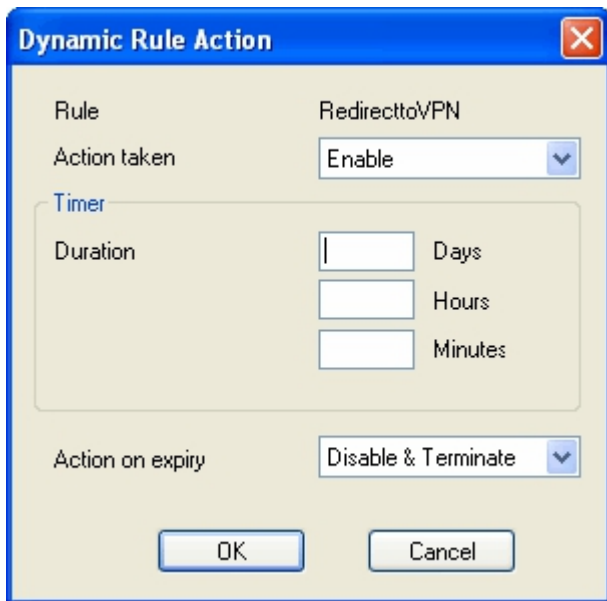
1. Go to **CONFIGURATION > Configuration Tree > Box > Virtual Servers > your virtual server > Assigned Services > Firewall > Forwarding Rules.**
2. Click **Lock.**
3. Edit the access rule you want to make dynamic.
4. Enable **Dynamic Rule.**
 Dynamic Rule
5. Click **OK.**
6. Click **Send Changes** and **Activate.**

Create a Dynamic Application Rule

1. Go to **CONFIGURATION > Configuration Tree > Box > Virtual Servers > your virtual server > Assigned Services > Firewall > Forwarding Rules.**
2. Click **Lock.**
3. In the left menu, click **Application Rules.**
4. Edit the application rule you want to make dynamic.
5. Enable **Dynamic Rule.**
 Dynamic Rule
6. Click **OK.**
7. Click **Send Changes** and **Activate.**

Enable and Disable Dynamic Rules via NG Admin

1. Open the **FIREWALL > Dynamic** page.
2. Double click a dynamic rule to open the **Change Dynamic Rule** dialog.



3. Select **Enable** to enable the rule.
4. If you want the rule to be enabled temporarily enter the time span in the **Timer** section.
5. Select an action from the **Action** on expiry drop down list.
 - **Enable** - Enables the access rule.
 - **Disable** - Disables the access rule.
 - **Disable & Terminate** - Disables the rule and terminates all existing connections based on this rule.
 - **Block** - Blocks all traffic matching this rule explicitly.
 - **Block & Terminate** - Blocks all traffic matching this rule and terminates all existing connections based on this rule explicitly.
 - **None** - None.
7. Click **OK**.
8. Click **Send Changes** and **Activate**.

Enable and Disable Dynamic Rules via SSL VPN Desktop and Mobile Portal

Create a dynamic access rule resource to be able to use the web interface to enable or disable dynamic access rules on the SSL VPN desktop or mobile portal.

For more information, see [and Mobile Portal User Guide](#).

Figures

1. FW_Dynamic.png
2. FW_Dynamic.png
3. dyn.jpg

© Barracuda Networks Inc., 2019 The information contained within this document is confidential and proprietary to Barracuda Networks Inc. No portion of this document may be copied, distributed, publicized or used for other than internal documentary purposes without the written consent of an official representative of Barracuda Networks Inc. All specifications are subject to change without notice. Barracuda Networks Inc. assumes no responsibility for any inaccuracies in this document. Barracuda Networks Inc. reserves the right to change, modify, transfer, or otherwise revise this publication without notice.