

The Barracuda NG Firewall Authentication Client

<https://campus.barracuda.com/doc/43847017/>

To automate [Offline Firewall Authentication](#), use the Barracuda NG Firewall Authentication Client. After installing the client application, the user will be automatically logged in to the firewall authentication service every time they log into Windows. The Barracuda NG Firewall Authentication Client can automatically start with Microsoft Windows and will run until you close the client by selecting **Exit** from the tray menu icon. The active firewall authentication will time out once the client is closed.

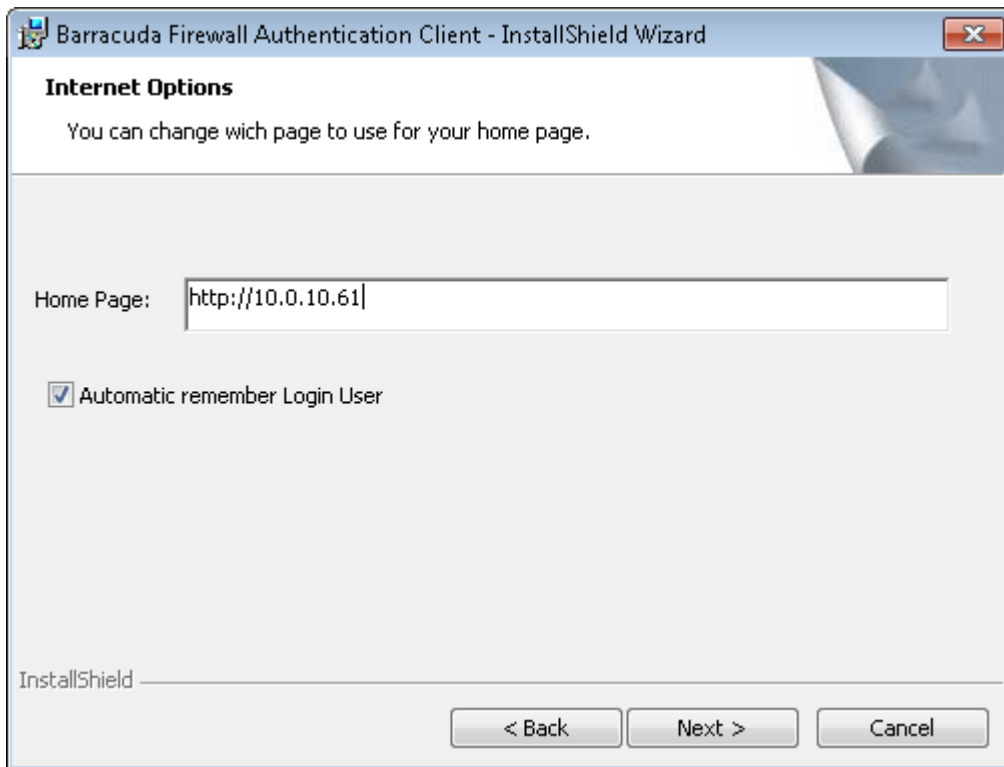
In this article:

Installing the Barracuda NG Firewall Authentication Client

Install the Barracuda NG Firewall Authentication Client and configure the settings for your Barracuda NG Firewall. You can download the application from the [Barracuda Website](#).

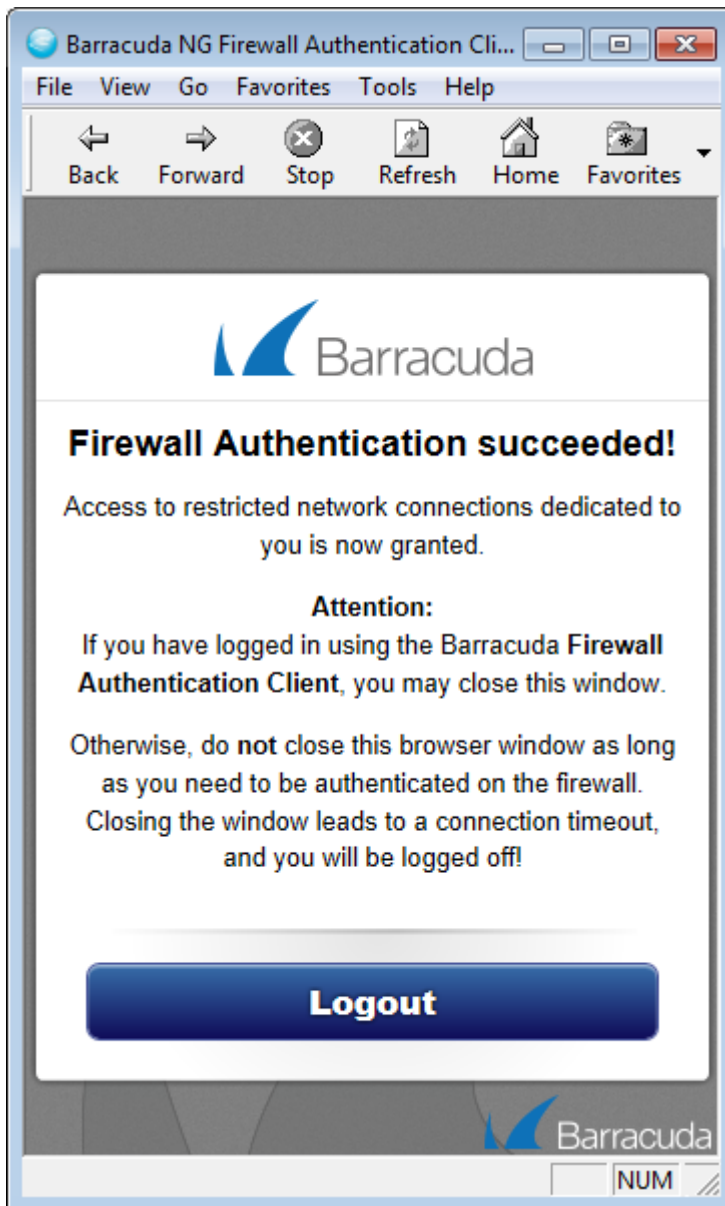
During installation, the Barracuda NG Authentication Client copies the connection settings from Internet Explorer. If you must change proxy settings, change the settings in Internet Explorer; do not change the proxy settings in the Barracuda NG Authentication Client application.

1. Launch the Barracuda NG Firewall Authentication Client on your system.
2. Click **Next**.
3. Accept the license agreement and click **Next**.
4. In the **Internet Options** window, enter the URL of your Barracuda NG Firewall authentication page.



5. Click **Next** to finish the installation.

You can now log in to the Barracuda NG Firewall using the Barracuda NG Authentication client.



Change the Barracuda NG Firewall Authentication Page

To configure the authentication URL after the authentication client has already been installed:

1. Open the Barracuda NG Firewall Authentication Client.
2. Open the **Tools > Options** page.
3. Enter the URL of your Barracuda NG Firewall authentication page.
4. Click **OK**.

The URL is the internal IP address used as the **Destination** in the App-Redirect firewall rule. For

more information, see [How to Configure Offline Firewall Authentication](#).

Figures

1. auth_opt.png
2. Auth_Client01.png

© Barracuda Networks Inc., 2019 The information contained within this document is confidential and proprietary to Barracuda Networks Inc. No portion of this document may be copied, distributed, publicized or used for other than internal documentary purposes without the written consent of an official representative of Barracuda Networks Inc. All specifications are subject to change without notice. Barracuda Networks Inc. assumes no responsibility for any inaccuracies in this document. Barracuda Networks Inc. reserves the right to change, modify, transfer, or otherwise revise this publication without notice.