

## How to Deploy the Barracuda NG Vx on Hyper-V

<https://campus.barracuda.com/doc/43847063/>

The Barracuda NG Vx is available as a virtual machine for your Microsoft Hyper-V hypervisor.

Before deploying the Barracuda NG Vx, verify that the host system meets the minimum storage requirements and review the resource recommendations for the production system.

### In this article:

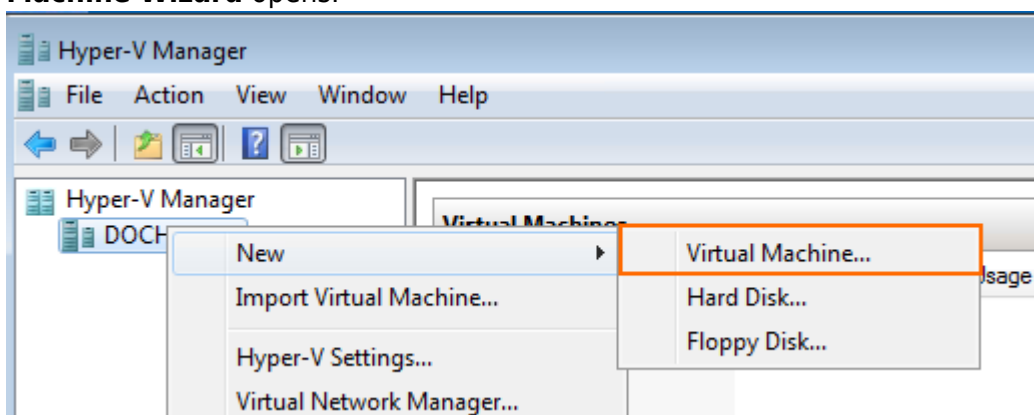
### Before you Begin

- For information regarding the sizing of your CPU, disk, and RAM, see [Virtual Systems \(Vx\)](#).
- Download the Barracuda NG Vx VHD virtual disk image from the [Barracuda Download Portal](#).
- Copy the VHD virtual disk image to the Microsoft Hyper-V server.


### Step 1. Create a New Virtual Machine

Create a virtual machine using the sizing recommendations for your model of the Barracuda NG Vx.


1. Launch Hyper-V Manager.
2. Right click on your Hyper V server and Select **New > Virtual Machine**. The **New Virtual Machine Wizard** opens.



3. Enter the **Name**. E.g., Barracuda NG Vx
4. Click **Next**.

Before You Begin	Choose a name and location for this virtual machine.
<b>Specify Name and Location</b>	The name is displayed in Hyper-V Manager. We recommend that you use a name that helps you easily identify this virtual machine, such as the name of the guest operating system or workload.
Assign Memory	Name: <input type="text" value="Barracuda NG Vx"/>
Configure Networking	You can create a folder or use an existing folder to store the virtual machine. If you don't select a folder, the virtual machine is stored in the default folder configured for this server.
Connect Virtual Hard Disk	<input type="checkbox"/> Store the virtual machine in a different location
Installation Options	Location: <input type="text" value="C:\ProgramData\Microsoft\Windows\Hyper-V\"/> <input type="button" value="Browse..."/>
Summary	 If you plan to take snapshots of this virtual machine, select a location that has enough free space. Snapshots include virtual machine data and may require a large amount of space.

5. Enter the amount of **memory** in MB. E.g., 2048
6. Click **Next**.

Before You Begin	Specify the amount of memory to allocate to this virtual machine. You can specify an amount from 8 MB through 1048576 MB. To improve performance, specify more than the minimum amount recommended for the operating system.
Specify Name and Location	Memory: <input type="text" value="2048"/> MB
<b>Assign Memory</b>	 When you decide how much memory to assign to a virtual machine, consider how you intend to use the virtual machine and the operating system that it will run.
Configure Networking	<a href="#">More about determining the memory to assign to a virtual machine</a>
Connect Virtual Hard Disk	
Installation Options	
Summary	

7. Select the virtual network from the **Connection** drop down.
8. Click **Next**.

Before You Begin	Each new virtual machine includes a network adapter. You can configure the network adapter to use a virtual network, or it can remain disconnected.
Specify Name and Location	Connection: <input type="text" value="extNetwork"/>
Assign Memory	<a href="#">More about configuring network adapters</a>
<b>Configure Networking</b>	
Connect Virtual Hard Disk	
Installation Options	
Summary	

9. Select **Use an existing virtual disk** and enter the **Location** of the VHD file.
10. Click **Next**.

Before You Begin  
Specify Name and Location  
Assign Memory  
Configure Networking  
**Connect Virtual Hard Disk**  
Summary

A virtual machine requires storage so that you can install an operating system. You can specify the storage now or configure it later by modifying the virtual machine's properties.

Create a virtual hard disk

Name:

Location:

Size:  GB (Maximum: 2040 GB)

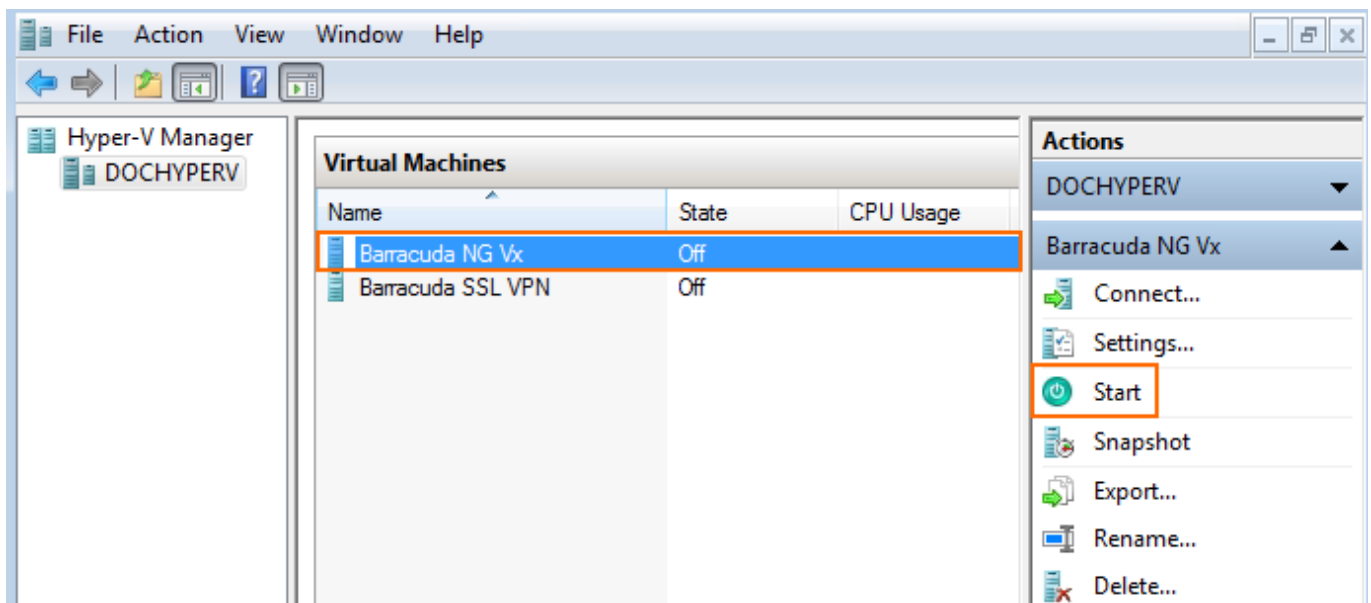
Use an existing virtual hard disk

Location:

Attach a virtual hard disk later

11. Review the Summary and click **Finish**.

You can now launch the Barracuda NG Vx by selecting the virtual machine and clicking **Start** in the right pane.

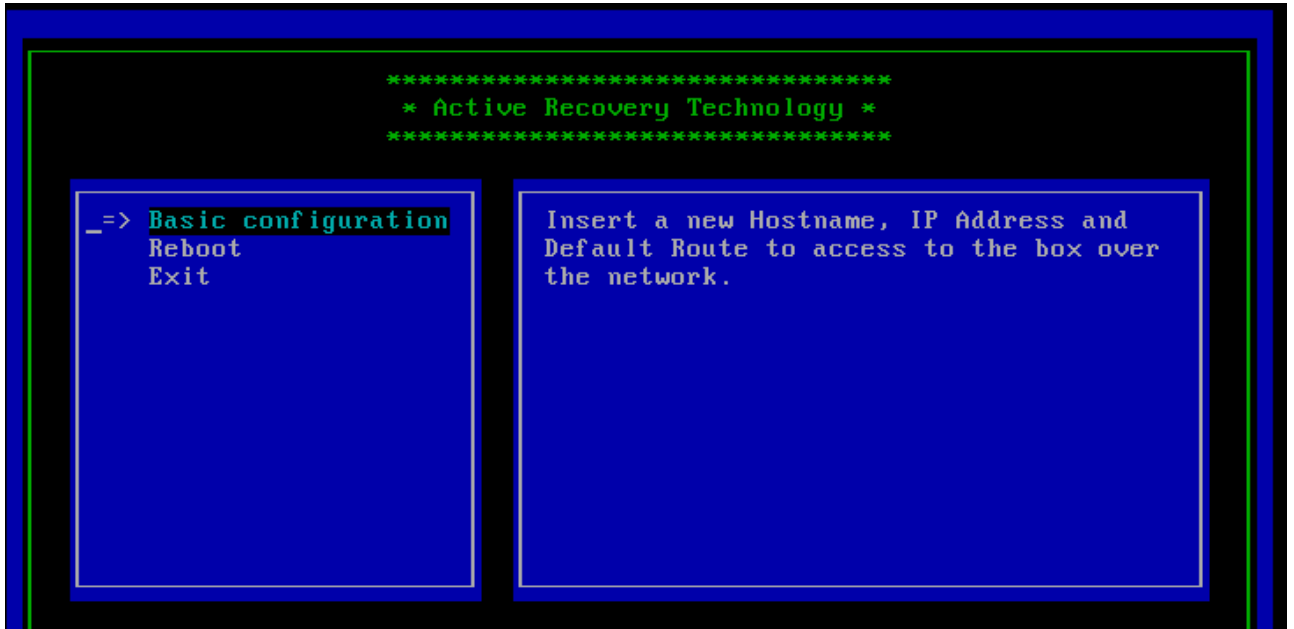


## Step 2. Configure the Barracuda NG Vx Unit on First Boot

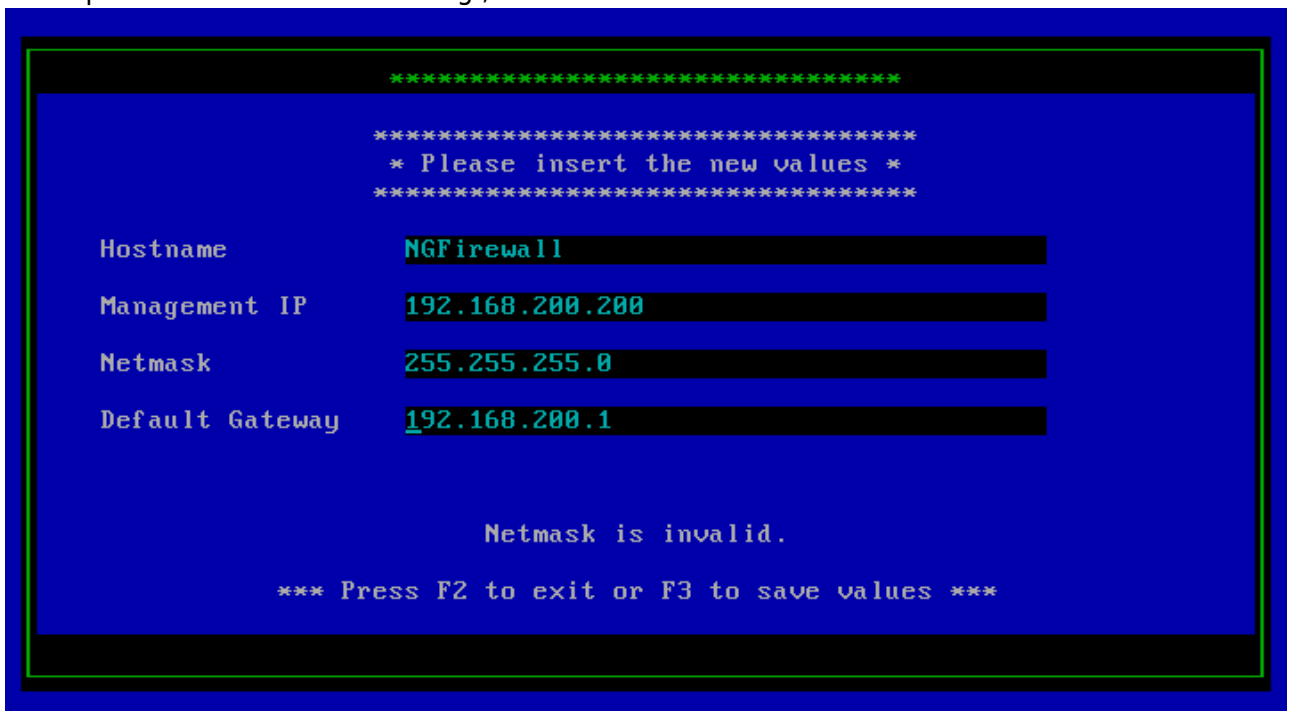
You need to connect to the console of the VM to enter the minimal network configuration.

1. Launch Hyper-V Manager.
2. In the **Virtual Machines** pane double click on the Barracuda NG Vx VM. The console of the virtual Barracuda NG Vx opens.

- When the Barracuda NG VM has started the **Active Recovery Technology (ART)** menu is launched.



- Select **Basic Configuration**, enter the following network settings, and then press **F3** to save your changes:
  - **Hostname** - The desired hostname for your Barracuda NG Vx unit.
  - **Management IP** - The internal IP address for your Barracuda NG Vx unit. This IP address must be reachable from your PC. E.g., 192.168.200.200
  - **Netmask** - The subnet mask. E.g., 255.255.255.0
  - **Default Gateway** - The IP address of the next hop device that serves as and access point to another network. E.g., 192.168.200.1



- Press **F3** to save the configuration.

6. Select **Reboot**. The Barracuda NG Vx will restart with the new network configuration.

### **Next Step**

---

After you deploy the Barracuda NG Vx unit, continue with [Getting Started](#).

## Figures

1. hyperV00.png
2. hyperV01.png
3. hyperV02.png
4. hyperV03.png
5. hyperV04.png
6. hyperV05.png
7. art\_01.png
8. art\_02.png

© Barracuda Networks Inc., 2019 The information contained within this document is confidential and proprietary to Barracuda Networks Inc. No portion of this document may be copied, distributed, publicized or used for other than internal documentary purposes without the written consent of an official representative of Barracuda Networks Inc. All specifications are subject to change without notice. Barracuda Networks Inc. assumes no responsibility for any inaccuracies in this document. Barracuda Networks Inc. reserves the right to change, modify, transfer, or otherwise revise this publication without notice.