

## How to Configure Administrator Workspaces

<https://campus.barracuda.com/doc/48202970/>

In the Barracuda NextGen Control Center, administrators can create and customize workspaces to include often used configuration nodes from the config tree. Each workspace can either be shared with all administrators or assigned to specific administrators. To edit a workspace, create directories and labels to organize its configuration nodes. You can also edit and move the configuration nodes. To back up and restore a workspace, save it to a configuration file.

### Before you begin

Before administrators can create, view, and customize their workspaces, they must be given permissions to do so. In the **Administrative Roles** configuration, assign the parameter **CC Configuration Module** to the user and select the **Create/Remove Workspaces** and/or **Change Workspaces** check box in the **CC Config Permissions** settings. For more information, see [How to Configure Administrative Roles](#).

### Create a workspace

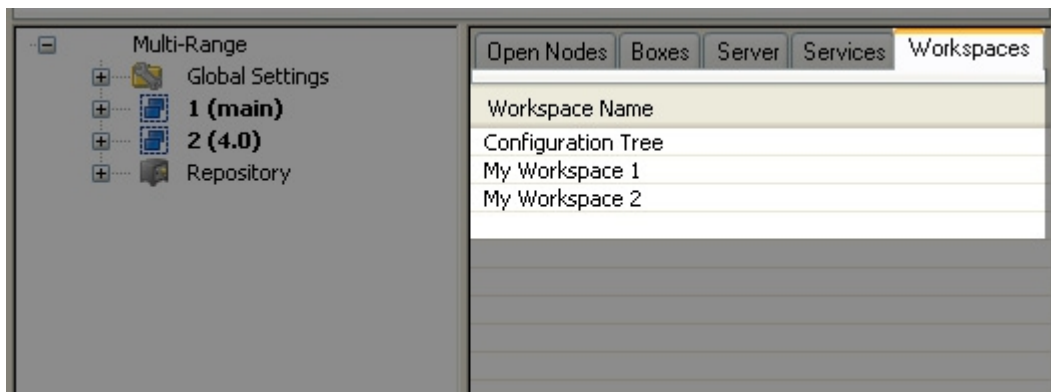
1. Open the **CONFIGURATION** tab.
2. Right-click **Multi-Range** and select **Create Workspace**.
3. In the **Workspace Settings** window, enter the following settings:
  - **Short Name** – The internal name of the workspace.
  - **Label** – The visible name of the workspace.
  - **Admins to use the workspace** – A comma- or space-delimited list of administrators who are permitted to use the workspace. You can use wildcard characters such as "\*" (asterisk) and "?" (question mark) to define ranges of matching administrator names.
  - **Admins to change the workspace** – A comma- or space-delimited list of administrators who are permitted to change the workspace. You can use wildcard characters such as "\*" (asterisk) and "?" (question mark) to define ranges of matching administrator names.  
These administrators must also have the **Change Workspace** permission set within their [Administrative Role](#) settings.When left blank, the workspace is only editable by its creator.
- **IP addresses/networks to use the workspace** – IP addresses and network ranges from which administrators can use the workspace. When left blank, the workspace can be accessed from anywhere.
4. Click **OK**.

---

## View a workspace

---

To view a workspace, click the **Workspaces** tab in the right pane of the **CONFIGURATION** page and select the workspace. If you can not find this section, move your mouse to the right of the screen and click/drag the line towards the middle.



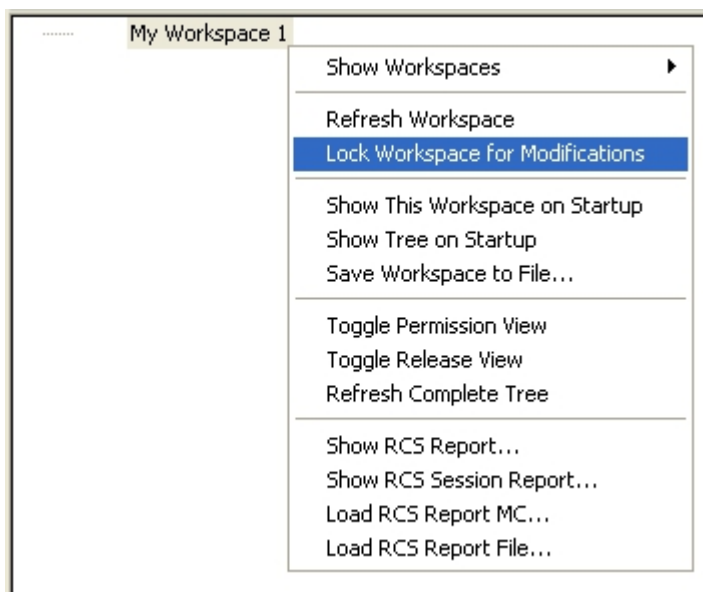
If you are already viewing a workspace but want to switch to another workspace view, right-click the active workspace's root node, select **Show Workspaces**, and then select the new workspace view.

## Lock a workspace

---

To edit a workspace, you must first lock it.

1. Switch to the workspace view.
2. Right-click the workspace's root node and select **Lock Workspace for Modifications**.

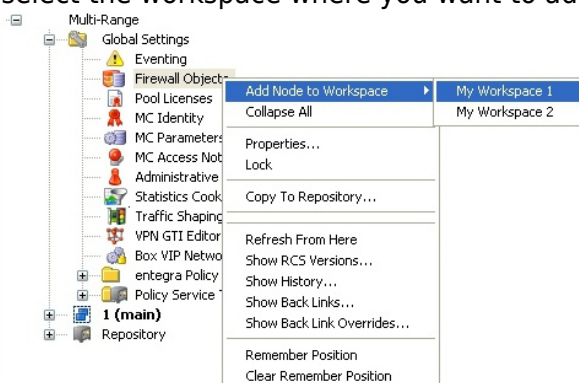


While the workspace is locked, the background changes to yellow. To unlock the workspace, right-click its root node and select **Unlock Workspace**.

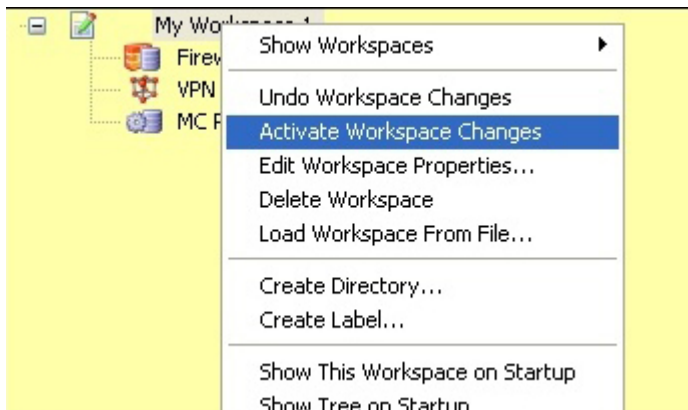
## Add a configuration node

Before you can add a node to a workspace, you must first [lock the workspace](#). You can lock multiple workspaces at a time.

1. Open the **CONFIGURATION** tab. If you are already in the workspace, navigate back to the config tree by clicking **Configuration Tree** from the **Workspaces** tab in the right menu of the **Configuration Tree** page.
2. In the config tree, right-click the required node, select **Add Node to Workspace**, and then select the workspace where you want to add the node.



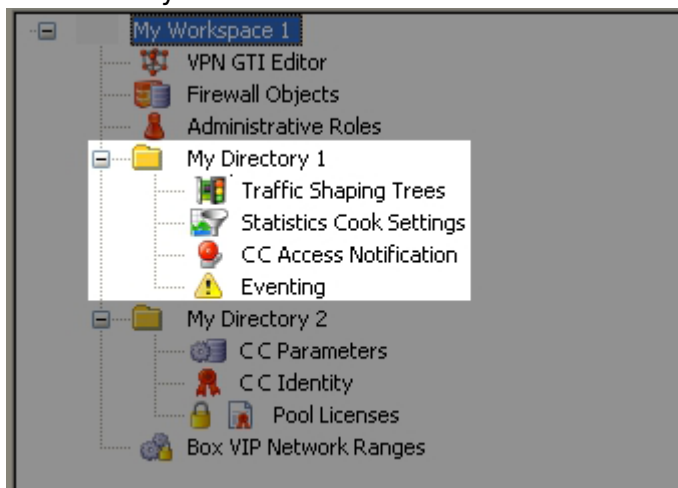
3. In the **Enter Name** window, enter a display name for the node and then choose to either remain in the configuration tree view or switch to the workspace view.
4. After adding all of the required nodes to the workspace, [switch to the workspace view](#).
5. Right-click the workspace's root node and select **Activate Workspace Changes**.



## Edit a workspace

After creating a workspace, you can edit its settings. You can also create directories and labels to organize its configuration nodes.

1. Lock the workspace in the workspace view.
2. Right-click the workspace's root node and select one of the following options to edit the workspace:
  - **Create Directory** – Creates a directory. In the **Enter Name** window, enter the name for the directory and click **OK**.



- **Create Label** – Creates a label to partition the workspace into different sections. You can move nodes before or after the label.
- **Edit Workspace Properties** – Reopens the **Workspace Settings** window so you can edit the workspace properties.
- **Refresh Workspace** – Reloads the workspace.
- **Delete Workspace** – Deletes the workspace.
- **Show this Workspace on Startup** – Loads the workspace view instead of the configuration tree when you log into the Barracuda NextGen Control Center and click the **CONFIGURATION** tab.

- **Show Tree on Startup** - Loads the configuration tree when you log into the Barracuda NextGen Control Center and click the **CONFIGURATION** tab.
3. Right-click the workspace's root node and select **Activate Workspace Changes**.

## Modify a node

---

You can modify workspace nodes by removing, renaming, and moving them.

1. Lock the workspace in the workspace view.
2. Right-click the node and select one of the following options:
  - **Remove Node** - Removes the node.
  - **Rename Node** - Renames the node. In the **Enter Name** window, enter the new name for the node and then click **OK**.
  - **Mark Node for Move** - Moves the node. The node is then marked by a red icon. Then right-click a label or another node and choose to move the marked node before or after it. You can also right-click a directory and move the node into it.
3. Right-click the workspace's root node and select **Activate Workspace Changes**.

## Back up and restore a workspace

---

You can create a configuration file to back up and restore your workspace.

1. Lock the workspace in the workspace view.
2. Right-click the workspace's root node and select one of the following options:
  - **Save Workspace to File** - Saves the workspace into a configuration file.
  - **Load Workspace from File** - Restores a workspace from a saved configuration file.

Loading a workspace overwrites the currently active workspace.

## Figures

1. workspace.png
2. lock\_workspace.png
3. add\_node.jpg
4. activate\_workspace.jpg
5. create\_dir.png

© Barracuda Networks Inc., 2020 The information contained within this document is confidential and proprietary to Barracuda Networks Inc. No portion of this document may be copied, distributed, publicized or used for other than internal documentary purposes without the written consent of an official representative of Barracuda Networks Inc. All specifications are subject to change without notice. Barracuda Networks Inc. assumes no responsibility for any inaccuracies in this document. Barracuda Networks Inc. reserves the right to change, modify, transfer, or otherwise revise this publication without notice.