



# How to Block Search Terms using a Custom Application Object

If the search term you want to block is not covered by the Safe Search feature (because it does not represent adult content), you can still block specific search terms or queries by creating a custom application. Custom search applications are supported for Google, Yahoo, Bing, and YouTube. These custom application objects can then be selected in the matching application rule. Custom search applications do not override the **Safe Search** settings of the matching access rule.

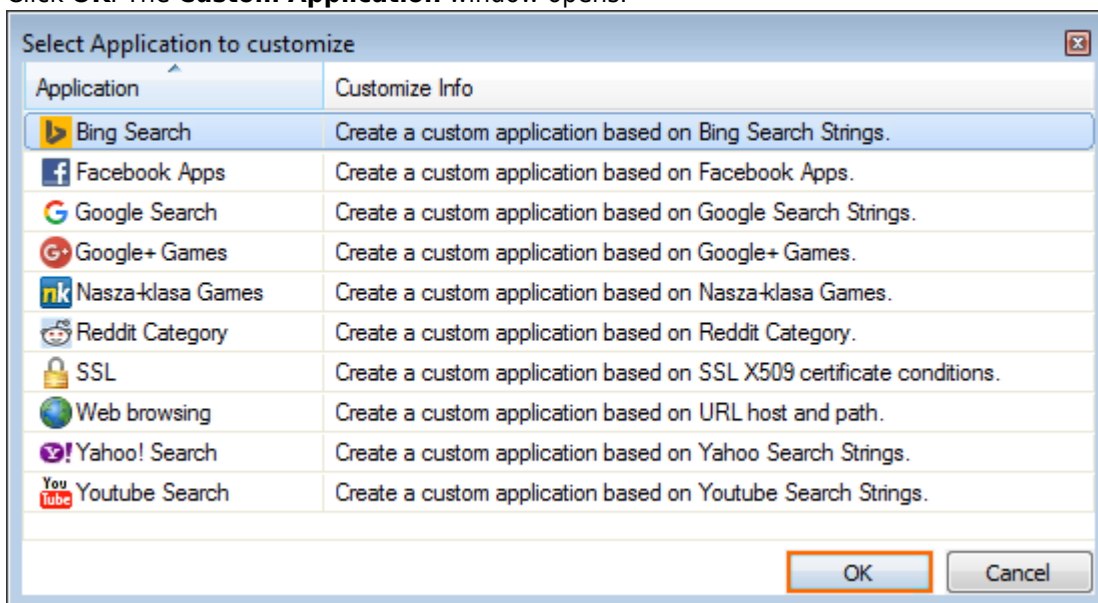
## Before you Begin

- Define the search terms you wish to block. Wildcard characters (\* and ?) are allowed. E.g., \*searchterm?searchterm\*

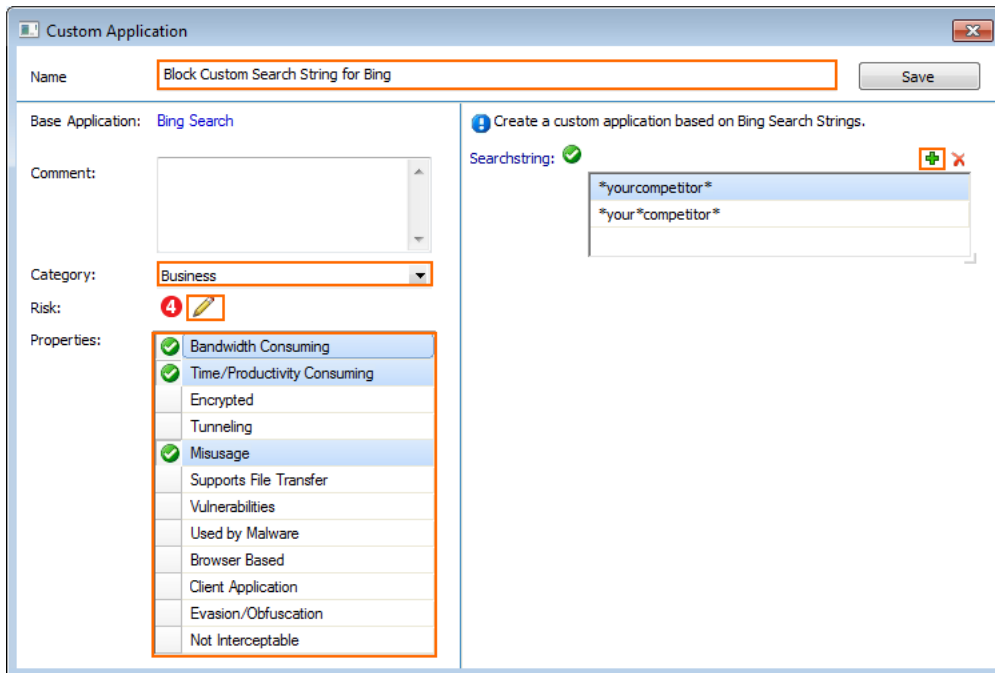
## Step 1. Create a Custom Application Object

Create a custom application object for each search engine provider.

1. Go to **CONFIGURATION > Configuration Tree > Box > Virtual Servers > your virtual server > Assigned Services > Firewall > Forwarding Rules.**
2. In the left menu, click **Applications.**
3. Right-click in the main area, and select **New > Custom Application.** The **Select Application to customize** window opens.
4. Select the search engine provider. E.g. **Bing Search**
5. Click **OK.** The **Custom Application** window opens.



6. Enter a **Name**
7. Select a **Category**
8. Click the **edit** icon to select the **Risk** factor.
9. Select the **Properties.**
10. Click + to add a **Search String.** Wildcards \* and ? are allowed. Multiple search entries are combined with a logic OR.
11. Click **Save.**



12. Click **Send Changes** and **Activate**.

To block this search term for all supported search engine providers, repeat this step for each search engine.

## Step 2. Create a PASS Access Rule

Create a PASS access rule that matches outgoing HTTP and HTTPS traffic. Because most search engines use HTTPS, using SSL Interception is recommended.

1. Go to **CONFIGURATION > Configuration Tree > Box > Virtual Servers > your virtual server > Assigned Services > Firewall > Forwarding Rules**.
2. Double-click to edit the access rule matching outgoing web traffic generated by your users.
3. Verify that the access rule matches both HTTP and HTTPS traffic.
4. Click on the **Application Policy** link and enable the following Application Control features:
  - o **Application Control**
  - o **(optional) SSL Interception**



LAN-HTTPS-2-INTERNET  
Allows internet access from Trusted LAN for typical applications.

Bi-Directional   
 Dynamic Rule   
 Deactivate Rule

Source	Service	Destination
Trusted LAN	HTTP+S	Internet
Ref: Trusted LAN Networks Ref: Trusted Next-Hop Networks	Ref: HTTP Ref: HTTPS	Ref: Any NOT 10.0.0.0/8 NOT 172.16.0.0/12 NOT 192.168.0.0/16

Authenticated User	Policy	Connection Method
Any	IPS Policy Default Application Policy	Dynamic SNAT
	<input checked="" type="checkbox"/> Application Control <input checked="" type="checkbox"/> SSL Interception <input type="checkbox"/> URL Filter <input type="checkbox"/> AV Scan <input type="checkbox"/> ATD <input type="checkbox"/> Safe Search <input type="checkbox"/> YouTube for Schools <input type="checkbox"/> Google Accounts	Source-based NAT

OK Cancel

5. Click **OK**.
6. Click **Send Changes** and **Activate**.

### Step 3. Create Application Rule using the Custom Application Objects

Create an application rule matching the same traffic that matches the access rule created in Step 2.

1. Go to **CONFIGURATION > Configuration Tree > Box > Virtual Servers > your virtual server > Assigned Services > Firewall > Forwarding Rules**.
2. In the left menu, click **Application Rules**.
3. Click **Lock**.
4. Create a **PASS** application rule. For more information, see [How to Create an Application Rule](#).
  - o **Source** - Select the same source used in the matching access rule.
  - o **Application** - Select the custom application object created in Step1.
  - o **Destination** - Select the same destination used in the matching access rule.



<div style="display: flex; justify-content: space-between; align-items: center;"> <span>Deny</span> <span>BlockUnwantedSearchTerms</span> </div>		
<div style="display: flex; justify-content: space-between; align-items: center;"> <span><input type="checkbox"/> Bi-Directional</span> <span><input type="checkbox"/> Dynamic Rule</span> <span><input type="checkbox"/> Deactivate Rule</span> </div>		
Source	Application	Destination
Trusted LAN Ref: Trusted LAN Networks Ref: Trusted Next-Hop Networks	<explicit-app> Ref: Unwanted Search Term in Bing Ref: Unwanted Search Term in Y... Ref: Unwanted Search Term in Go...	Internet Ref: Any NOT 10.0.0.0/8 NOT 172.16.0.0/12 NOT 192.168.0.0/16

5. Click **OK**.
6. Place the application rule so that no application rule above it matches the same traffic.
7. Click **Send Changes** and **Activate**.

You are now blocking searches for the unwanted search terms listed in the custom application objects. Users searching for these terms are redirected to the customizable block page. For more information, see [How to Configure Custom Block Pages and Texts](#)

