

How to Configure NAC for SSL VPN

<https://campus.barracuda.com/doc/48660756/>

SSL VPN Network Access Control (NAC) limits access to the web portals of the SSL VPN service according to a variety of factors based on attributes of the connecting device. Users who fail the NAC check are not allowed to log in until they have a conforming system. You can define exceptions for each category. Use exceptions to allow/block specific versions denied in the NAC block list. For example, to allow only Windows 7 to connect: Block all Windows operating systems in the NAC block list and then add an exception for Windows 7. NAC settings do not apply to clients connecting via CudaLaunch. The following parameters are evaluated by the SSL VPN service when the user logs in:

- Desktop operating systems
- Mobile operating systems
- Desktop browser types and versions
- Browser plugins
- Mobile browser types and versions

Before you begin

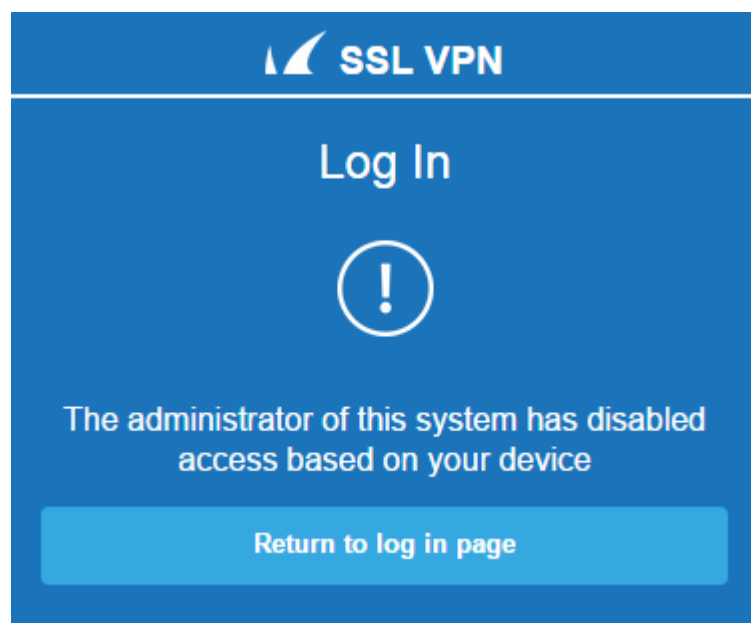
Enable and configure SSL VPN on the firewall. For more information, see [How to Enable SSL VPN and CudaLaunch](#).

Configure the NAC block list

1. Go to the **VPN > SSL VPN** page and click the **NAC** tab.
2. Set **Enable NAC** to **Yes**.
3. For each parameter, select the versions that should be blocked. Select **None** to not block according to this criteria.
4. (optional) Configure NAC exceptions to block or deny an entire category.
5. (optional) In the **Exceptions** section, click **Add NAC Exceptions**. The **Add NAC Exceptions** window opens.
 1. Enter a **Name** for the exception.
 2. Select the **Access** policy.
 3. Select the exception **Type**. The subtype for the selected **Type** is displayed. For example, the mobile browser type if you selected **Mobile Browser** as the **Exception Type**.
 4. Select the **Subtype** and **Version** for the exception type you previously selected.
 5. Click **Save**.
6. Click **Save**.

All users accessing the SSL VPN web portals must now conform to the requirements set in the NAC

block list. When a user logs in with a device that fails one or more of the server-side NAC checks, the following block pages are displayed:



Check the **sslvpn** log file to find out which NAC block rule caused the user to be rejected. For more information, see [Viewing Logs](#).

Figures

1. NAC_block_mobile.png

© Barracuda Networks Inc., 2024 The information contained within this document is confidential and proprietary to Barracuda Networks Inc. No portion of this document may be copied, distributed, publicized or used for other than internal documentary purposes without the written consent of an official representative of Barracuda Networks Inc. All specifications are subject to change without notice. Barracuda Networks Inc. assumes no responsibility for any inaccuracies in this document. Barracuda Networks Inc. reserves the right to change, modify, transfer, or otherwise revise this publication without notice.