
Barracuda Console

<https://campus.barracuda.com/doc/5013548/>

Console

The Console interface is a curses based interface that Barracuda Backup appliances boot into when started. Use the interface to set your locale, change network settings, enter your License Token and default domain, troubleshoot, or reload the configuration through direct physical access to the unit. To access and interact with the Console screen, you must plug a keyboard and monitor into your Barracuda Backup appliance.

Navigation

Use the keyboard commands to navigate and make changes to your Barracuda Backup settings through the Barracuda Console.

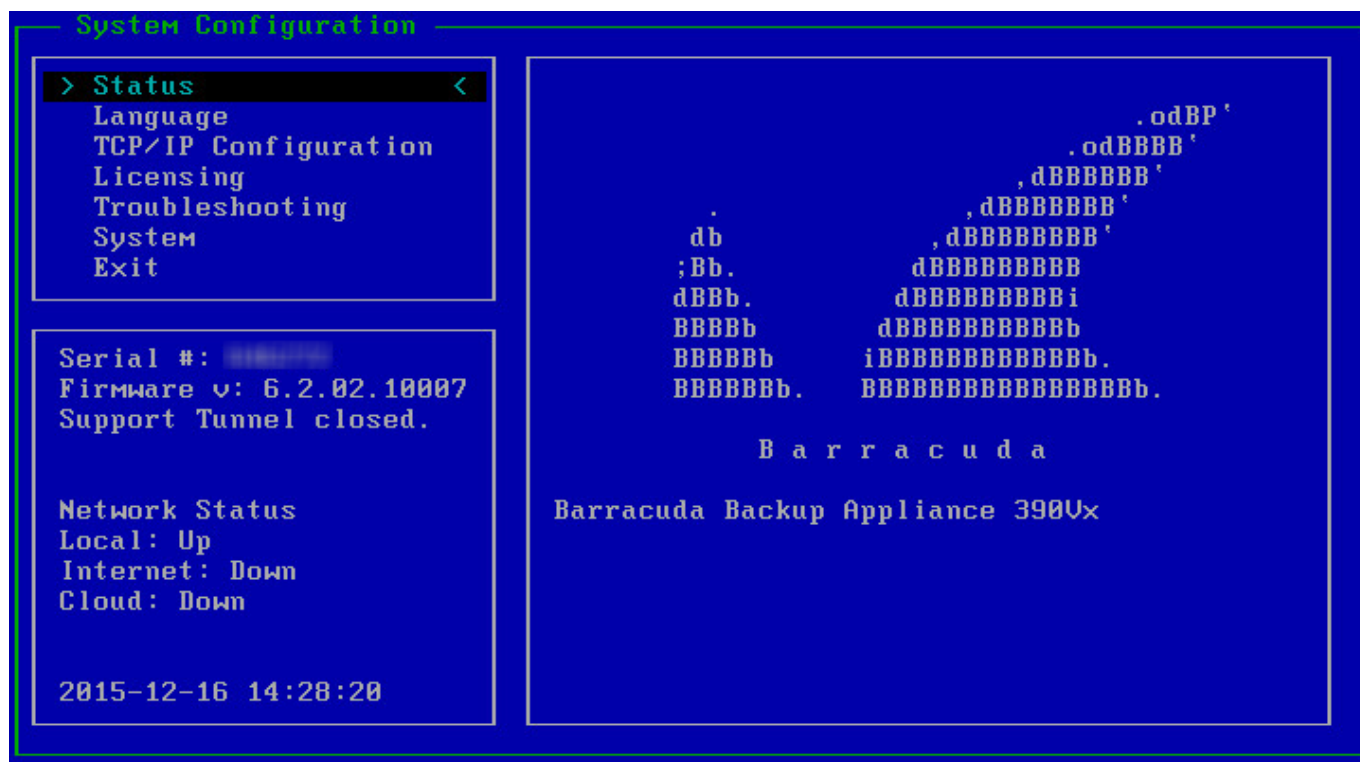
1. Power on the appliance, and enter your **TCP/IP** configuration in the black screen. Once configuration is complete, the **System Configuration** screen displays.
2. Use the **Arrow** keys to highlight the desired **System Configuration** option in the left pane.
3. When the desired section is highlighted, press **Enter** to enter *edit* mode.
4. Use the **Arrow** keys to navigate through the options in the right pane.
5. Press **Enter** to trigger an action button, or, if you have selected and made changes to an editable field, press **Enter** to move to the **Save** button.
Press **Esc** to discard changes and return to *read* mode. Once in *read* mode, use the **Arrow** keys to highlight the desired **System Configuration** option in the left pane.
6. Press **Enter** to save your changes and return to the **System Configuration** options in the left pane. Use the **Arrow** keys to highlight the next section you wish to edit.

Interface

Note that the user interface will vary depending on whether you are using the Barracuda Backup appliance or Vx.

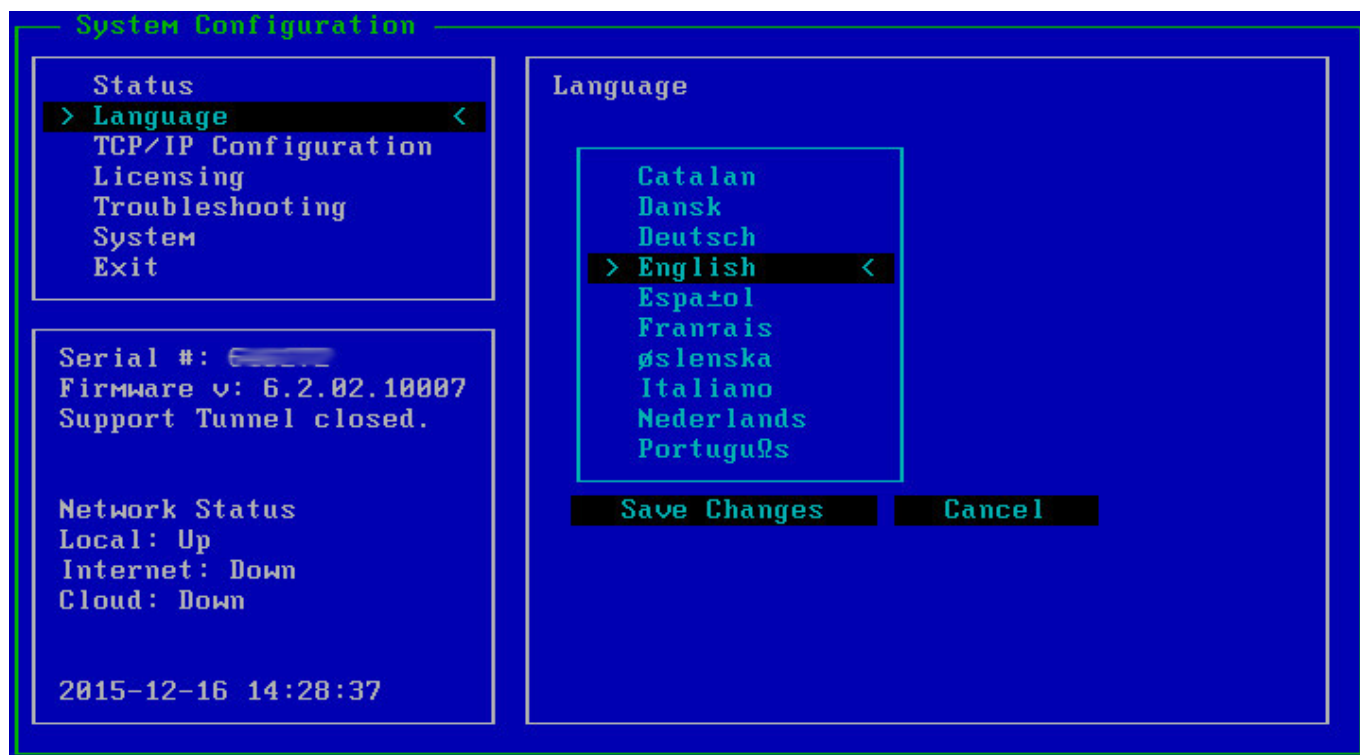
Status

When you open the console, the **Status** page displays:



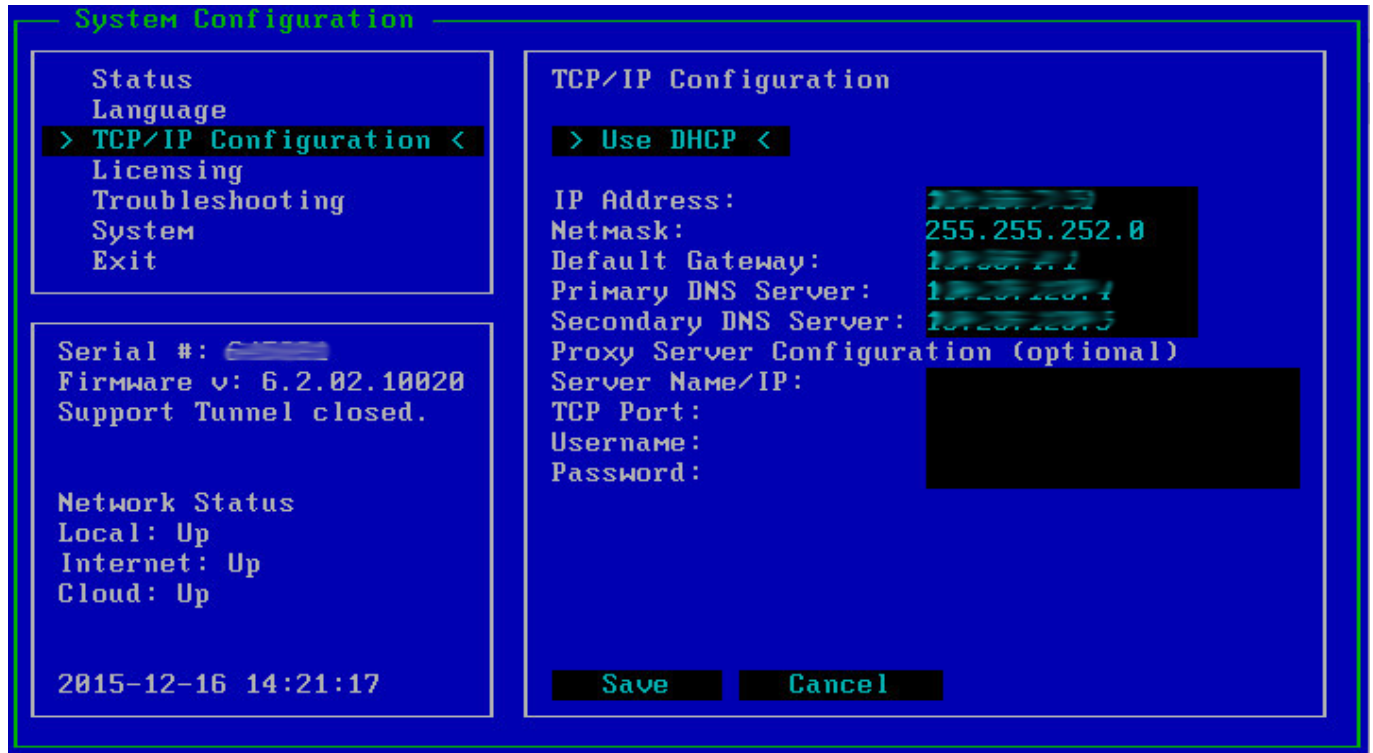
Language

Select your locale from the **Language** list:



TCP/IP Configuration

Enter your TCP/IP Configuration details :



The screenshot shows the 'System Configuration' menu with the following options:

- Status
- Language
- > TCP/IP Configuration <**
- Licensing
- Troubleshooting
- System
- Exit

Below the menu, the following information is displayed:

Serial #: **64555**
Firmware v: 6.2.02.10020
Support Tunnel closed.

Network Status
Local: Up
Internet: Up
Cloud: Up

2015-12-16 14:21:17

The 'TCP/IP Configuration' section is expanded, showing the following options:

- > Use DHCP <**
- IP Address: **192.168.1.1**
- Netmask: **255.255.252.0**
- Default Gateway: **192.168.1.1**
- Primary DNS Server: **192.168.1.4**
- Secondary DNS Server: **192.168.1.5**
- Proxy Server Configuration (optional)
- Server Name/IP: **[Redacted]**
- TCP Port: **[Redacted]**
- Username: **[Redacted]**
- Password: **[Redacted]**

At the bottom of the TCP/IP Configuration section, there are two buttons: **Save** and **Cancel**.

Licensing

Enter your License **Token** and **Default Domain**:

System Configuration

Status	Licensing
Language	
TCP/IP Configuration	
> Licensing <	
Troubleshooting	
System	
Exit	

Serial #: 61112	
Firmware v: 6.2.02.10007	
Support Tunnel closed.	
Network Status	
Local: Up	
Internet: Down	
Cloud: Down	
2015-12-16 14:29:00	

Licensing	
To provision this Barracuda Virtual Appliance with a license token, please enter it below and then choose "Save" to continue.	
Token:	
Default Domain:	cudaops.com_
Save Cancel	

Troubleshooting

To run **network Connectivity Tests**, enter the **Host/IP** address you wish to test, and select the test you wish to run:

System Configuration

Status
Language
TCP/IP Configuration
Licensing
> Troubleshooting <
System
Exit

Serial #: 64572
Firmware v: 6.2.02.10007
Support Tunnel closed.

Network Status
Local: Up
Internet: Down
Cloud: Down

2015-12-16 14:29:32

Troubleshooting

Network Connectivity Tests

Host/IP: 192.168.1.1

Ping ARP Ping Traceroute

Show ARP Table Packet Dump

Remote Support

Enable Tunnel

Back to Main Menu

System

From the **System Configuration** page, you can select to **Reboot** or **Shutdown** the appliance, **Reload Appliance Configuration**, and **Change Console Password**:

System Configuration

Status
Language
TCP/IP Configuration
Licensing
Troubleshooting
> System <
Exit

Serial #: 64572
Firmware v: 6.2.02.10007
Support Tunnel closed.

Network Status
Local: Up
Internet: Down
Cloud: Down

2015-12-16 14:29:48

System

System Reload/Shutdown

> Reboot <

Shutdown

Reload Appliance Configuration

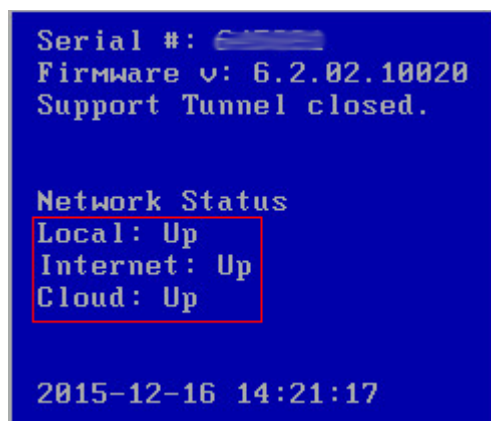
Change Console Password

Old Password
New Password
Confirm New Password

Save Cancel

Network Settings

A Barracuda Backup appliance is considered fully online when **Local**, **Internet**, and **Cloud**, display as **Up** in the **Network Status** section; note that it is normal for **Internet** and **Cloud** to display as **Down** for locally controlled appliances:



```
Serial #: 645522
Firmware v: 6.2.02.10020
Support Tunnel closed.

Network Status
Local: Up
Internet: Up
Cloud: Up

2015-12-16 14:21:17
```

It is possible to have connectivity to the LAN and Internet but not to Barracuda Networks. This can occur if the system is not linked or if a LAN firewall is blocking the necessary outbound port 1194. Encrypted traffic is sent out across port 1194 to the Barracuda Networks management network.

If you wish to restrict the outbound network traffic on port 1194 to the Barracuda Networks specific IP range, contact [Barracuda Networks Technical Support](#) for a listing of required IP addresses to allow.

If a DHCP server is running on the network, it is an easy way to bring Barracuda Backup online. Barracuda Backup requests network IP information from the DHCP server when it boots, or after it loses network connectivity for any reason. Static IP information can be specified as well.

If you have questions about Barracuda Console, or need assistance getting your Barracuda Backup appliance online, contact [Barracuda Networks Technical Support](#).

Figures

1. Status1.png
2. Language.png
3. Network.png
4. Licensing.png
5. Troubleshooting.png
6. System.png
7. networkstatus.png

© Barracuda Networks Inc., 2024 The information contained within this document is confidential and proprietary to Barracuda Networks Inc. No portion of this document may be copied, distributed, publicized or used for other than internal documentary purposes without the written consent of an official representative of Barracuda Networks Inc. All specifications are subject to change without notice. Barracuda Networks Inc. assumes no responsibility for any inaccuracies in this document. Barracuda Networks Inc. reserves the right to change, modify, transfer, or otherwise revise this publication without notice.