

How to Activate Network Changes

<https://campus.barracuda.com/doc/53248526/>

After changing the configuration of the network subsystem, you must activate the new network configuration. Depending on whether the management IP address is also changed, the following options are available:

Network Activation Without Changes to the Management IP Address

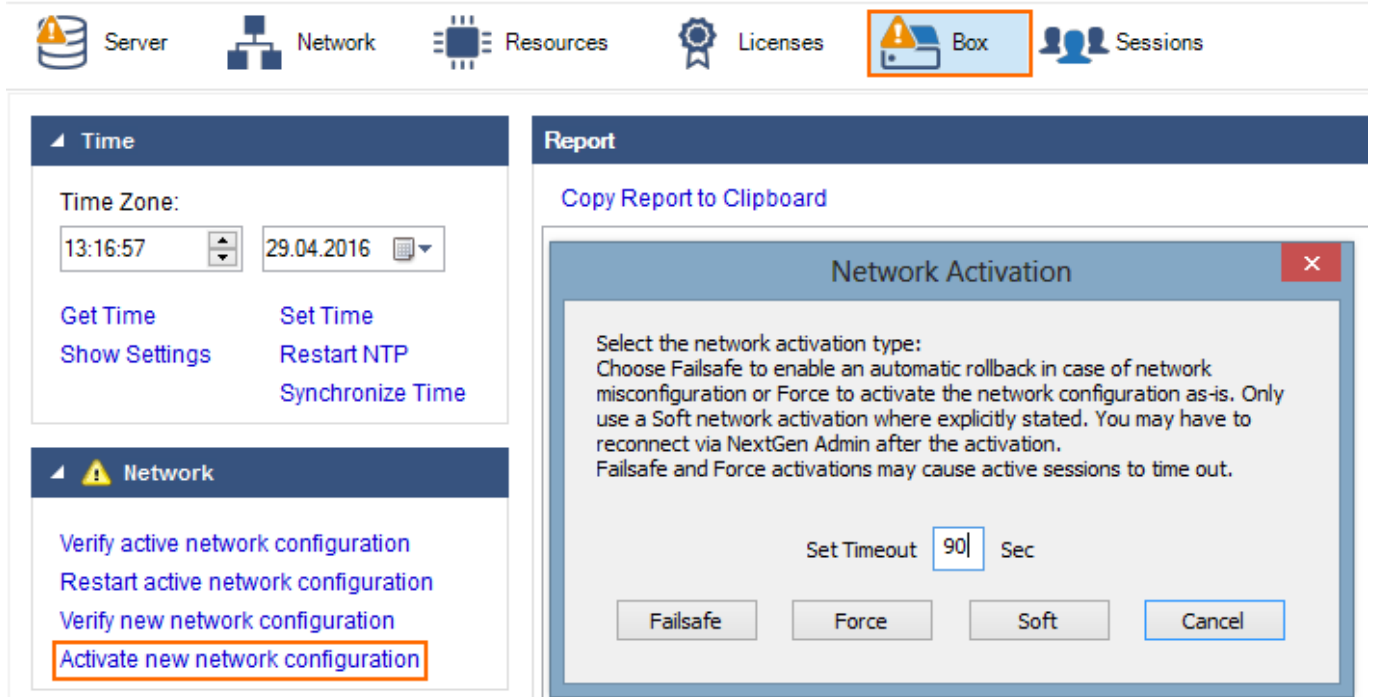
- **Failsafe** – A backup of the existing configuration is created, and the new network configuration is activated. If the connection to Barracuda NextGen Admin is established successfully after activation, the network activation is complete. If it fails, the network configuration is reverted to the previously working state. During activation in Failsafe mode, the whole network system is shut down, and the firewall is briefly unreachable. Active connections may time out.
- **Force** – In this activation mode, the new network configuration is activated without making a backup of the old configuration. If the new network configuration does not work, there is no fallback mechanism. During activation in Force mode, the whole network system is shut down and the firewall is briefly unreachable. Active connections may time out.
- **Soft** – A soft activation is used to immediately activate IPv6 and VLAN network configuration changes. Unlike failsafe and force, a soft activation does not restart the network subsystem. Active connections continue uninterrupted. IPv4 networks changes activated with a soft network activation might be picked up by services such as the control service, which monitors the active network configuration. If changes are detected, these services might introduce other changes to the network configuration immediately. Network configuration changes that are not immediately introduced or detected after the soft activation require a reboot to complete.

Network Activation with Management IP Address Changes

- **Activate now** – Use this option when a management IP address has been changed. If there are multiple management IPs, you can either select them from the list or manually enter the IP address you want to connect to after the network activation. After the new network configuration has been activated, the firewall reconnects to the new IP address. During activation in this mode, the firewall is shut down and active connections may time out.

Activating Network Configuration Changes

1. Go to **CONTROL > Box**.
2. In the left menu, expand the **Network** section and click **Activate new network configuration**.
3. Select the desired activation mode.



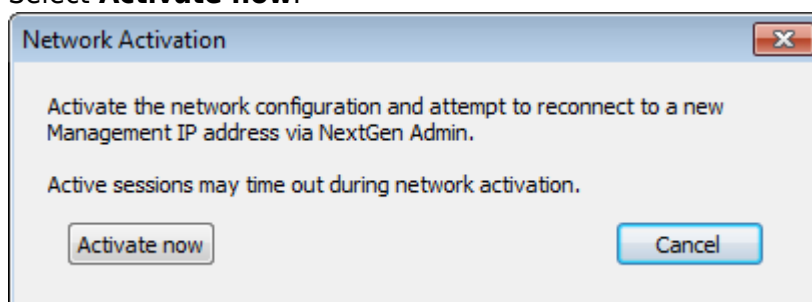
The screenshot shows the Barracuda CloudGen Firewall interface. At the top, there is a navigation bar with icons for Server, Network, Resources, Licenses, Box (highlighted with an orange box), and Sessions. Below this, the main interface is divided into two panels. The left panel has a 'Time' section with a 'Time Zone' dropdown set to '13:16:57' and '29.04.2016', and buttons for 'Get Time', 'Set Time', 'Show Settings', 'Restart NTP', and 'Synchronize Time'. Below the 'Time' section is a 'Network' section with a warning icon and buttons for 'Verify active network configuration', 'Restart active network configuration', 'Verify new network configuration', and 'Activate new network configuration' (highlighted with an orange box). The right panel is titled 'Report' and has a 'Copy Report to Clipboard' link. A 'Network Activation' dialog box is open, showing instructions: 'Select the network activation type: Choose Failsafe to enable an automatic rollback in case of network misconfiguration or Force to activate the network configuration as-is. Only use a Soft network activation where explicitly stated. You may have to reconnect via NextGen Admin after the activation. Failsafe and Force activations may cause active sessions to time out.' Below the instructions is a 'Set Timeout' field set to '90' and 'Sec', and four buttons: 'Failsafe', 'Force', 'Soft', and 'Cancel'.

After activation, the network might briefly show an error state until all connections are established.

Activating the Network Configuration when a Management IP Address Changes

When a management IP address has been changed, the F-Series Firewall offers the **Activate now** option.

1. Go to **CONTROL > Box**.
2. In the left menu, expand the **Network** section and click **Activate new network configuration**.
3. Select **Activate now**.



4. During activation, the firewall displays a 'Reconnecting' message:

Reconnecting to 10.0.10.67 ...

After the process has finished, NextGen Admin attempts to connect to the new management IP

address.

Figures

1. Activate_New_Network.png
2. activate_now.png
3. activate_reconn.png

© Barracuda Networks Inc., 2019 The information contained within this document is confidential and proprietary to Barracuda Networks Inc. No portion of this document may be copied, distributed, publicized or used for other than internal documentary purposes without the written consent of an official representative of Barracuda Networks Inc. All specifications are subject to change without notice. Barracuda Networks Inc. assumes no responsibility for any inaccuracies in this document. Barracuda Networks Inc. reserves the right to change, modify, transfer, or otherwise revise this publication without notice.