

---

## How to Change the Management IP Address

<https://campus.barracuda.com/doc/53248545/>

You can change the management IP address and interface to match your requirements. If the client is not in the same subnet, make sure the new management IP address is reachable from the client running NextGen Admin. If needed, add a gateway route. You must activate the network changes for the management IP change to take effect.

### Step 1. Change the MIP Address

---

Change the MIP address to match your existing network addresses.

1. Go to **CONFIGURATION > Configuration Tree > Box > Network**.
2. Click **Lock**.
3. In the **Management IP and Network** section, enter the new **Management IP (MIP)**.
4. Select the **Associated Netmask** for your network from the list.
5. (optional) Set **Responds to Ping** to **yes**.
6. Set **Use for NTPd** to **yes**.
7. Click **Send Changes** and **Activate**.

### Step 2. (optional) Change or Add the Gateway Route

---

If the client from which you are connecting to the F-Series Firewall is not in the same network as the firewall, you must create or change a gateway route to be able to access the firewall after changing the management IP address. You do not need to add a route if your client is in the same network as the new management IP address.

For more information, see [How to Configure Gateway Routes](#).

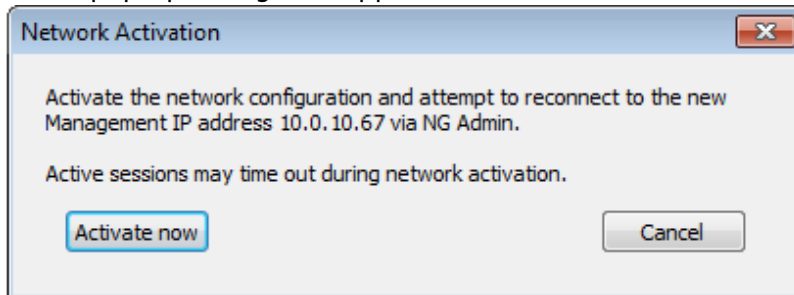
### Step 3. Activate the Network Configuration

---

After you create or change basic network configurations, you must activate your new network configuration:

1. Go to **CONTROL > Box**.
2. In the left menu, expand the **Network** section, and click **Activate new network configuration**.

3. In the pop-up dialog that appears, click **Activate** now.



4. The activation process may take several minutes. A 'Reconnecting' message is displayed during activation:

### **Reconnecting to 10.0.10.67 ...**

5. After the process has finished, restart Barracuda NextGen Admin.

You will now be able to log into the F-Series firewall with the new MIP address. If you are using a static IP, verify that the management PC can reach the new MIP.

## **Next Step**

(optional) Create a IPv6 management IP address. For more information, see [How to Add an IPv6 Management IP Address](#).

## Figures

1. activate\_now.png
2. activate\_reconn.png

© Barracuda Networks Inc., 2020 The information contained within this document is confidential and proprietary to Barracuda Networks Inc. No portion of this document may be copied, distributed, publicized or used for other than internal documentary purposes without the written consent of an official representative of Barracuda Networks Inc. All specifications are subject to change without notice. Barracuda Networks Inc. assumes no responsibility for any inaccuracies in this document. Barracuda Networks Inc. reserves the right to change, modify, transfer, or otherwise revise this publication without notice.