

Configuring an IMAP4 or POP3 Journal Account for Microsoft Exchange Server 2003

<https://campus.barracuda.com/doc/71860650/>

This article refers to Microsoft Exchange Server 2003.

As of April 8, 2014, Microsoft no longer issues security updates for Exchange Server 2003. Without security updates, Barracuda Message Archiver can no longer support Exchange Server 2003. For migration details, refer to the Microsoft TechNet article [Time to Move from exchange 2003](#).

- If you are using Microsoft Exchange Server 2003 Enterprise Edition, Barracuda Networks recommends deploying your Barracuda Message Archiver using the push method.
- If you are using Microsoft Exchange Server 2003 Standard Edition and licensing restrictions prevent you from setting up the requisite additional mail store, you can set up IMAP or POP3 journal accounts as described in this article.

Configure the Barracuda Message Archiver to automatically retrieve messages directly from your mail server using the IMAP or POP3 protocol.

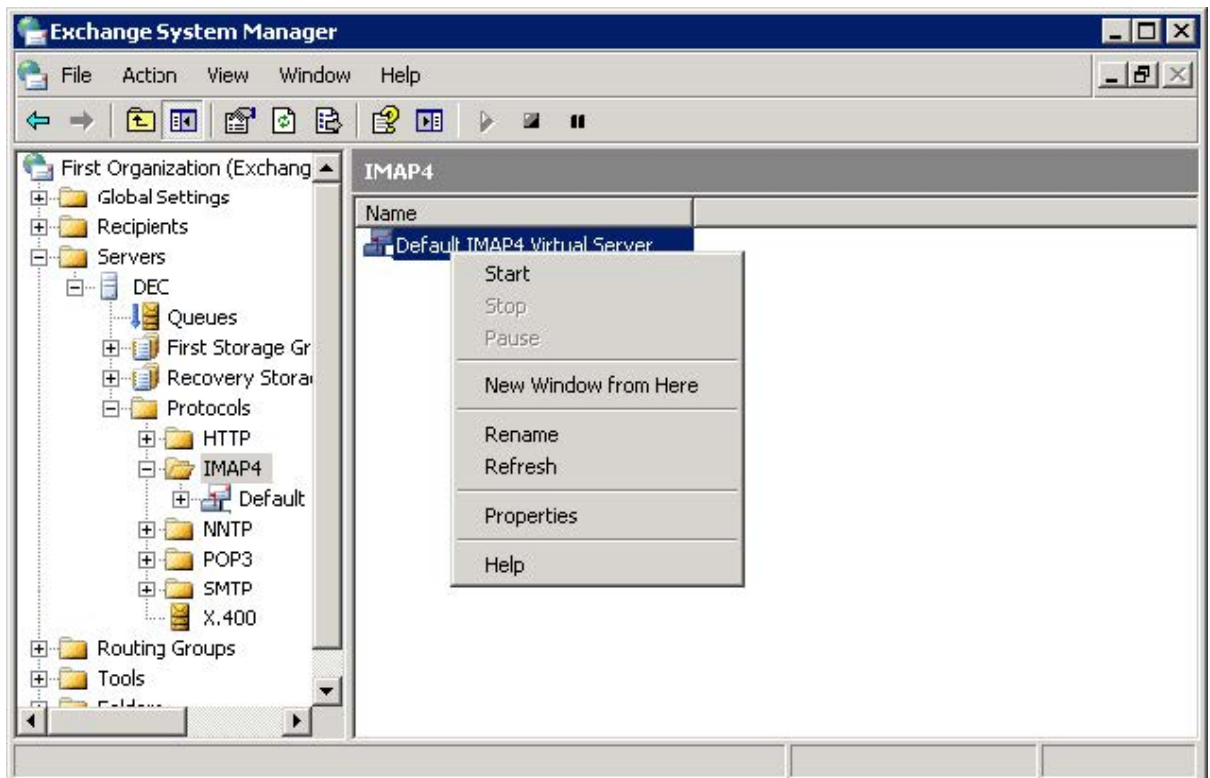
Open the associated port to allow the Barracuda Message Archiver to communicate freely with the Exchange Server:

- IMAP4 - Open port 143
- POP3 - Open port 110

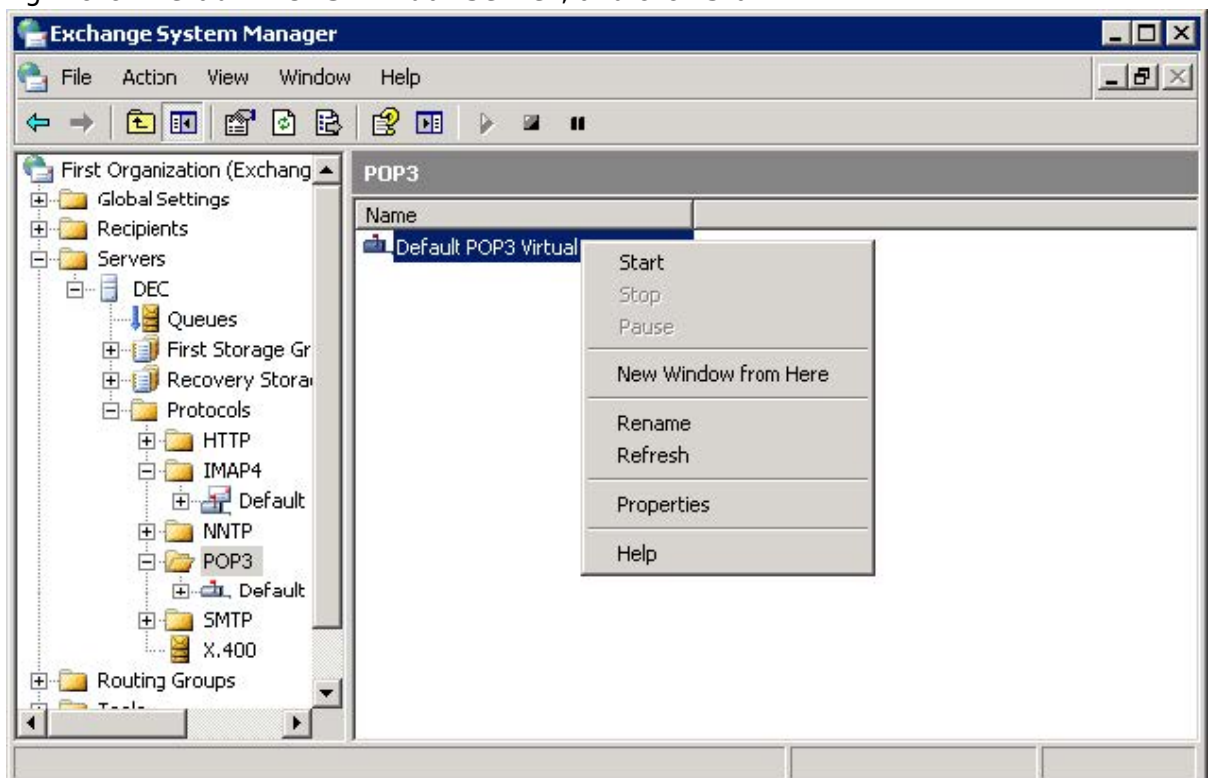
Step 1. Enable IMAP or POP3

Use the following steps to enable either IMAP or POP3 on your Exchange 2003 Server.

1. Log in to the Exchange Server as the Exchange Server administrator.
2. Launch Exchange System Manager. and navigate to **Servers > Protocols**.
 1. To enable IMAP4, navigate to **Servers > Protocols > IMAP4** , and in the center pane, right-click **Default IMAP4 Virtual Server**, and click **Start**:



1. To enable POP3, navigate to **Servers > Protocols > POP3**, and in the center pane, right-click **Default POP3 Virtual Server**, and click **Start**:



Set Exchange Rich-Text Format to Never Use

To ensure messages display properly in all standard mail clients, turn off rich-text format (RTF)

in Exchange.

Step 2. Configure Account

Use the following steps to create an Active Directory (AD) user.

This account must reside on your organization's domain, not a local machine account.

1. Log in to the Exchange Server as the Exchange Server Administrator.
2. Launch **Active Directory Users and Computers**.
3. Navigate to and right-click **Users**, and click **New > User**; the **New User** dialog box displays.
4. Enter the relevant information to identify the exchange mailbox, and click **Next**:

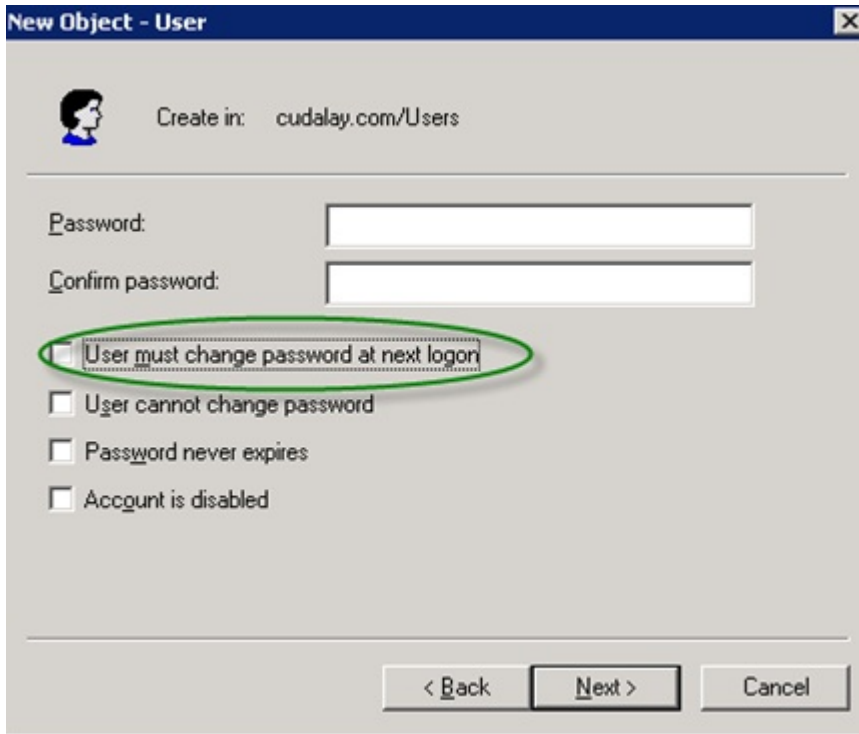


The screenshot shows the 'New Object - User' dialog box. At the top, it says 'Create in: cudalay.com/Users'. Below this, there are several input fields:

- First name:** exchange
- Initials:** (empty)
- Last name:** mailbox
- Full name:** exchange mailbox
- User logon name:** mailbox
- Domain:** @cudalay.com (selected from a dropdown menu)
- User logon name (pre-Windows 2000):** CUDALAY\
- Mailbox name:** mailbox

At the bottom, there are three buttons: '< Back', 'Next >', and 'Cancel'.

5. Enter the user password in the **Password** and **Confirm Password** fields, and then clear **User must change password at next logon**:

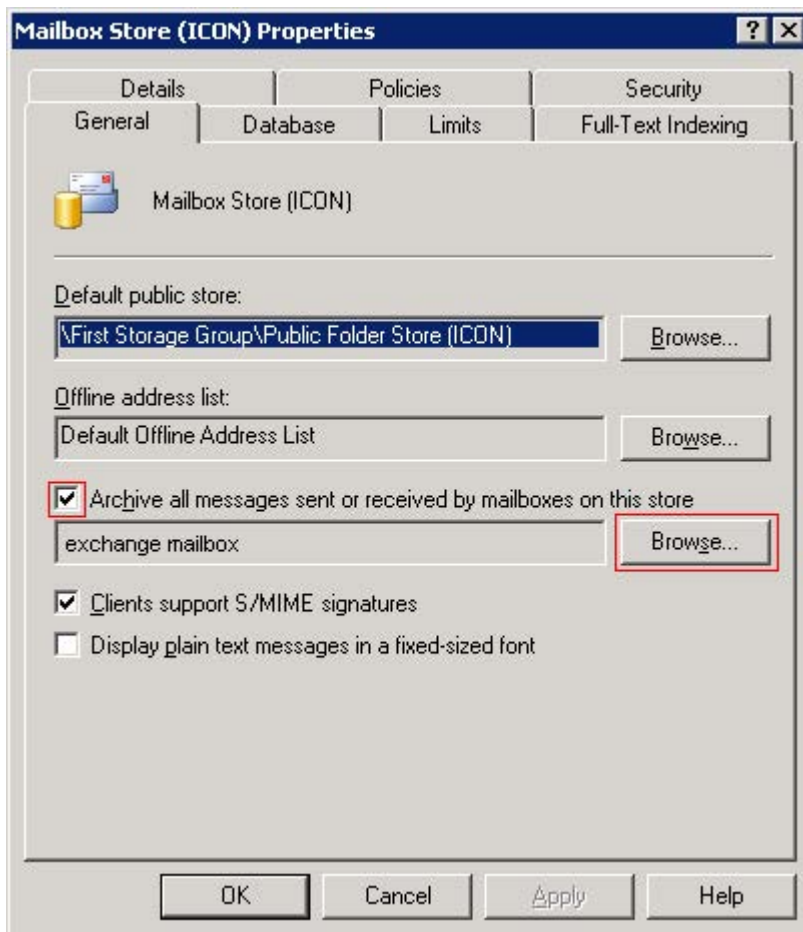


6. Click **Next**. Turn on **Create an Exchange mailbox**, and click **Next**.
7. Verify the user details, and click **Next**, and then click **Finish**.
8. In **Active Directory Users and Computers**, right-click on the newly created Exchange mailbox user, click **Properties**, and click the **E-mail Addresses** tab.
9. Click on the Exchange mailbox name, and click **Set As Primary**.
10. Click **OK** to close the **Properties** dialog box, and save your settings.

Step 3. Enable Envelope Journaling on Mail Storage

From the Microsoft website, navigate to the E-Mail Journaling Advanced Configuration tool, and complete the following to enable envelope journaling:

1. Click **Download**, save the file **Exejcfg.exe** to a directory on the system, and take one of the following actions to run the executable:
 1. Click **Open**; *or*
 2. Click **Run this program from its current location**; *or*
 3. At a command prompt, navigate to the file directory, and run the command:
Exejcfg.exe -e
2. Once Envelope Journaling is enabled, in the Exchange System Manager console, locate the Mailbox Store for your domain, right-click **Mailbox Store**, and click **Properties**.
3. On the **General** tab, select **Archive all messages sent or received by mailboxes on this store**, and click **Browse** following the Barracuda Journal field to locate and select the Journaling Account Mailbox User created in the previous step:



4. In the **Enter the object name to select** field, enter the User name, and click **Check Names**. Click **OK**.
5. Click **Apply**, and click **OK** to close the dialog and save your changes.

Step 4. Verify the Service is Started

Use the following steps to configure IMAP to accept plain text authentication.

1. Log in to the Exchange Server as the Exchange Server Administrator.
2. Go to **Programs > Administrative Tools > Services**.
3. Verify the selected service status is set to **Started**:
 - o **Microsoft Exchange IMAP**
 - o **Microsoft Exchange POP3**
4. To change the status, right-click on the service, and click **Start**.

Step 5. Configure a Barracuda Message Archiver Journal Account

Once you configure the Service Exchange Server, and the service is started, you can add the journal account to the Barracuda Message Archiver to begin retrieving new messages for archiving. Log in to the Barracuda Message Archiver as the administrator, and go to **MAIL SOURCES > Journal Accounts**.

1. In the **Journal Accounts** section, enter the following details:
 1. **Enable Journal Accounts** - Select **Yes** to allow the Barracuda Message Archiver to poll the listed accounts for new messages for archiving.
 2. **Enable Journal Testing** - When set to **Yes**, all listed accounts are tested for connectivity with each page view.
 3. **Polling Frequency** - Specify how often to poll each journal account for new messages.
2. In the **Journal Accounts Configuration** section, specify the following details for each journal account:
 1. **Status** - Displays the connection status for each account.
 2. **Server** - Enter the hostname of the mail server where the account resides.
 3. **Protocol** - Select whether the account is **POP3** or **IMAP**; once you select the protocol, the default port number automatically populates the **Port** field.
 4. **Username** - Enter the complete journaling email address you defined in the **Configure Account** section.
 5. **Password** - The password associated with the username defined in the **Configure Account** section.
 - Encryption** - Select the type of encryption used to connect to the mail server:
 1. **TLS (if available)**
 2. **TLS**
 3. **SSL**
 4. **None**
 7. **Port** - Select the associated port based on the selected protocol; the default value is port 143 for IMAP, and port 110 for POP3.
 8. **Keep Items on Server** - Select **Keep Items on Server** to allow the Barracuda Message Archiver to automatically clean up the contents of the journal mailbox after each import. When selected, prevents the Barracuda Message Archiver from removing the journaled messages from the mail server; only select this option if the contents of the journal account is required by other applications. In this case, make sure that another method for cleaning up the journal account is enabled on the mail server in order to prevent unlimited growth on the mail server and to stay in compliance with your organization's message retention policies.

Barracuda Networks recommends that you clear **Keep Items on Server** to save hard drive space on your mail server.
3. Click **Add** to add the journal account; verify the **Status** field displays green, and then click **Save Changes**.
4. To remove a journal account, click the **Delete** icon, and confirm you want to remove the account.

Figures

1. ESMStart.jpg
2. ESMStartPOP3.jpg
3. NewObjectUser.jpg
4. ChangePassword.jpg
5. ArchiveAllMsgs.jpg

© Barracuda Networks Inc., 2019 The information contained within this document is confidential and proprietary to Barracuda Networks Inc. No portion of this document may be copied, distributed, publicized or used for other than internal documentary purposes without the written consent of an official representative of Barracuda Networks Inc. All specifications are subject to change without notice. Barracuda Networks Inc. assumes no responsibility for any inaccuracies in this document. Barracuda Networks Inc. reserves the right to change, modify, transfer, or otherwise revise this publication without notice.