

How to Migrate Report Creator to a New Host

<https://campus.barracuda.com/doc/72515813/>

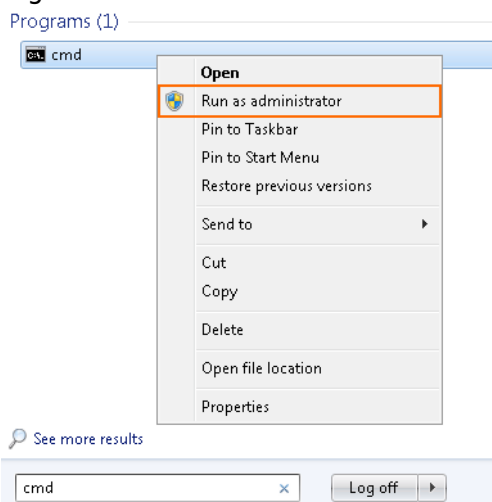
When working with Report Creator (RC), your configuration is stored on the system you are running RC on. Creating reports on another computer with your own settings is only possible when you migrate your configuration to that device. To migrate the configuration from RC, copy the corresponding registry key of your personal Windows user account to your personal account on the destination computer.

Migrating configurations will overwrite any existing settings. Therefore, before migrating Report Creator configurations, be aware that changes to the configuration should always be in accordance with the affected user and user account.

Always make a complete backup of your whole registry before applying changes to it, i.e., before importing configurations from other sources.

Step 1. Start the Application Regedit on Your Current Computer

1. Log into your Windows user account.
2. Open the **Start** menu.
3. Type **cmd**.
4. Right-click **cmd** and select **Run as administrator**.

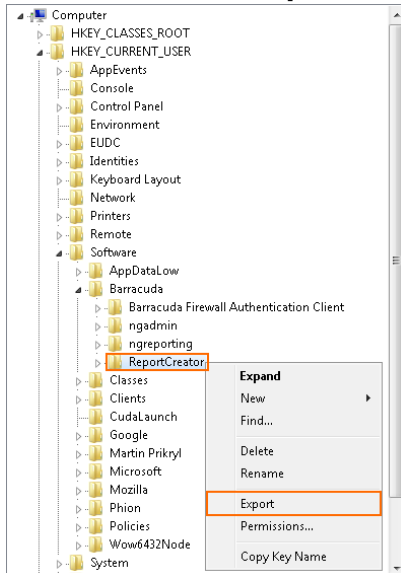


5. At the command prompt, type **regedit**, then hit **Enter**.
6. You will see the Registry Editor and HKEY_CURRENT_USER.

Step 2. Extract the Configuration from Your Current Computer

1. Click the small triangle next to **HKEY_CURRENT_USER** to expand the tree.
2. Click the small triangle next to **SOFTWARE (Software)** to expand the tree.

3. Click the small triangle next to **Barracuda** to expand the tree.
4. Right-click **ReportCreator**.
5. In the menu, click **Export**.



6. Enter a file name for saving the tree into a file. E.g., ReportCreator
7. Copy the 'ReportCreator.reg' file to the destination computer, e.g., via USB stick, email, file copy via network.

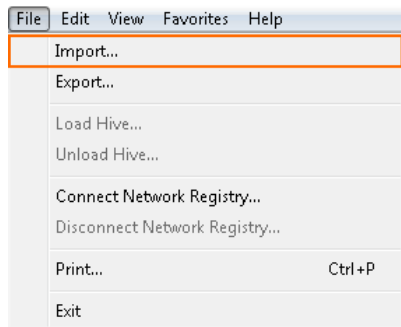
Step 3. Start the Registry Editor on Your Destination System

1. Log into the destination system with your credentials.
2. Open the **Start** menu.
3. Type **cmd**.
4. Right-click **cmd** and select **Run as administrator**.
5. At the command prompt, type **regedit**, then hit **Enter**.
6. You will see the Registry Editor and HKEY_CURRENT_USER.

Step 4. Import the Registry File on Your New Host System

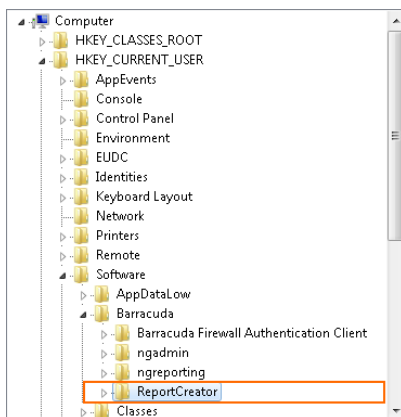
In case a configuration is already stored in the node ReportCreator, all your previously stored configuration information will be lost unless you create a backup beforehand. Importing a new configuration from a registry file will overwrite all current settings in this node.

1. Locate the registry file you copied to your destination system.
2. In the main menu of the registry editor, go to **File**.
3. Click **Import...**



4. Select the registry file you copied to your system.
5. Click **Open**.
6. After importing the configuration successfully, you will see a message similar to the following (depending on the version of your Windows operating system):
 - *The keys and values contained in [REG file] have been successfully added to the registry.*
 - *Information in [REG file] has been successfully entered into the registry.*

Verify that the configuration was added to the registry. In the Registry Editor, expand the nodes **Computer > HKEY_CURRENT_USER > Software > Barracuda**. If the import was successful, you will see a node with the name **ReportCreator**.



Figures

1. run_cmd_as_admin.png
2. extract_rc_configuration.png
3. import_rc_configuration.png
4. rc_configuration_added.png

© Barracuda Networks Inc., 2020 The information contained within this document is confidential and proprietary to Barracuda Networks Inc. No portion of this document may be copied, distributed, publicized or used for other than internal documentary purposes without the written consent of an official representative of Barracuda Networks Inc. All specifications are subject to change without notice. Barracuda Networks Inc. assumes no responsibility for any inaccuracies in this document. Barracuda Networks Inc. reserves the right to change, modify, transfer, or otherwise revise this publication without notice.