

## How to Switch from Barracuda Firewall Admin to the Web Interface

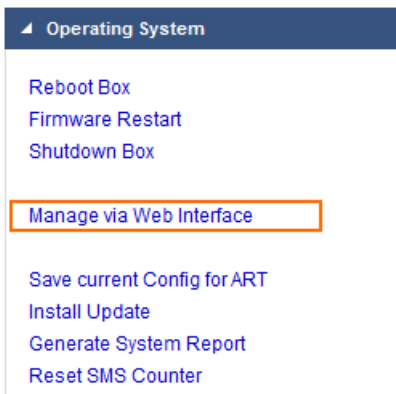
<https://campus.barracuda.com/doc/73719584/>

Switching firewall configuration management from Barracuda Firewall Admin to the web interface re-enables the web interface and restores the internal backup created at the time the web interface was disabled. All configuration changes made in Firewall Admin are discarded, and the configuration is reset to the internal firewall configuration backup.

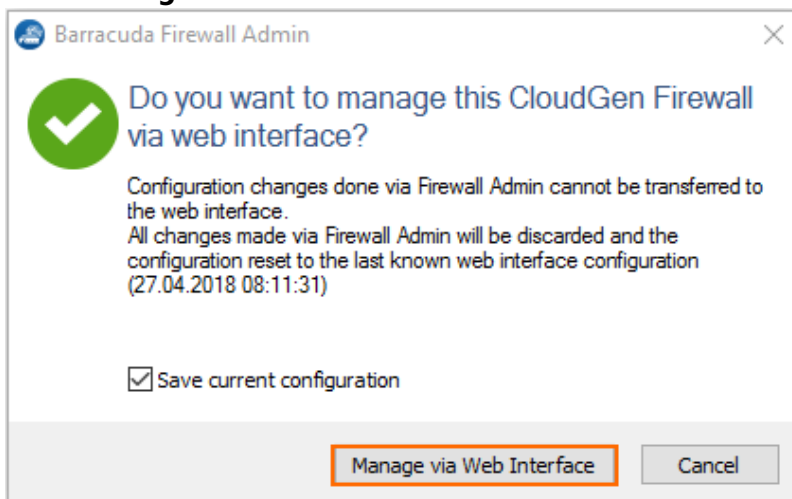
Configuration changes done via Firewall Admin cannot be transferred to the web interface.

### Switch from Barracuda Firewall Admin to the Web Interface

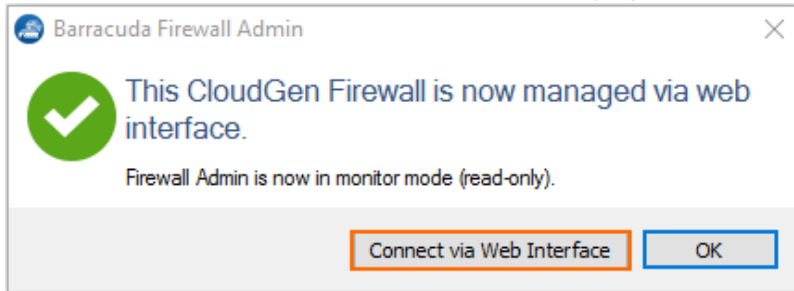
1. Go to **CONTROL > Box**.
2. In the left menu, expand the **Operating System** section and click **Manage via Web Interface**.



3. Select the **Save current configuration** check box to create a backup of your Firewall Admin configuration.
4. Click **Manage via Web Interface**.



5. Click **Connect via Web Interface** to manage your firewall configuration in web interface.



Your firewall configuration is now managed through the web interface and Firewall Admin can further be used to work only in monitoring mode. For more details, see [How to Use Barracuda Firewall Admin in Monitor Mode](#).

## Figures

1. manage\_web.png
2. manage\_web\_02.png
3. ngadm\_to\_webui.png

© Barracuda Networks Inc., 2019 The information contained within this document is confidential and proprietary to Barracuda Networks Inc. No portion of this document may be copied, distributed, publicized or used for other than internal documentary purposes without the written consent of an official representative of Barracuda Networks Inc. All specifications are subject to change without notice. Barracuda Networks Inc. assumes no responsibility for any inaccuracies in this document. Barracuda Networks Inc. reserves the right to change, modify, transfer, or otherwise revise this publication without notice.