

How to Create a *.vpn File

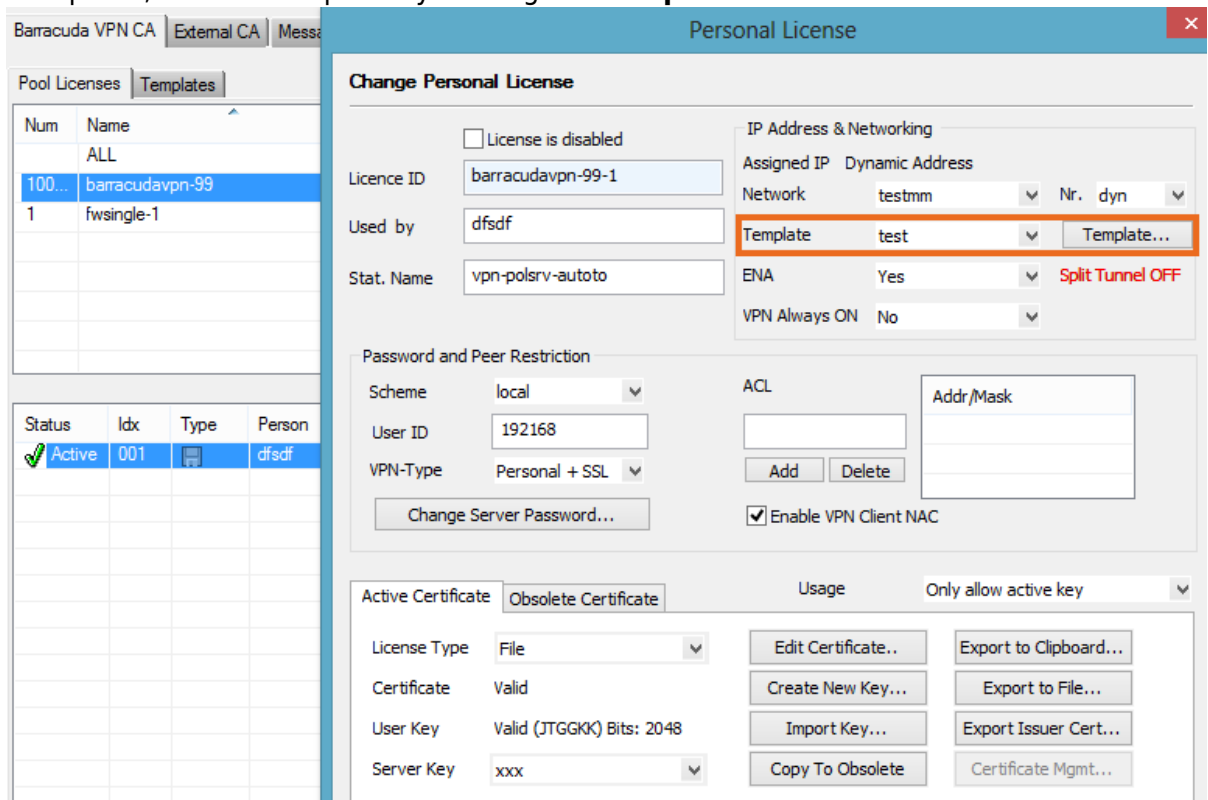
<https://campus.barracuda.com/doc/75696506/>

You can import VPN profiles and Barracuda Personal Licenses to the Barracuda Network Access Client and the Barracuda VPN Client using configuration files with the suffix *.vpn that can be configured and created within Barracuda Firewall Admin (for the importing process, see [How to Import a *.vpn File into the VPN Client](#)). Follow the instructions on this page to learn how to export a VPN profile from Barracuda Firewall Admin.

Creating a *.vpn File from a Barracuda Personal License

Before creating the *.vpn file, you must configure a VPN template and configure a Barracuda Personal License to be exported in the file.

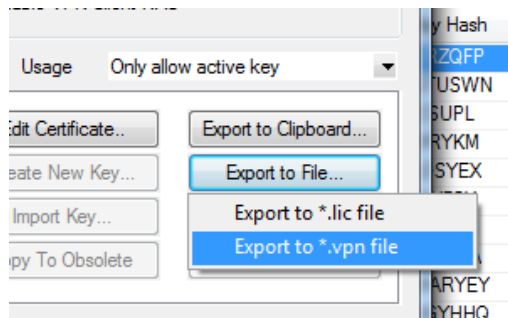
1. In Barracuda Firewall Admin, navigate to **CONFIGURATION > Configuration Tree > Box > Assigned Services > VPN-Service > Client to Site**.
2. Click **Lock**.
3. In the **Pool Licenses** tab, attach the VPN profile template to a Barracuda Personal License :
 1. Open a previously prepared Barracuda Personal License by double-clicking it.
 2. Select the configuration template to be used from the **Template** list, as shown in the figure below.
 3. If required, edit the template by clicking the **Template** button.



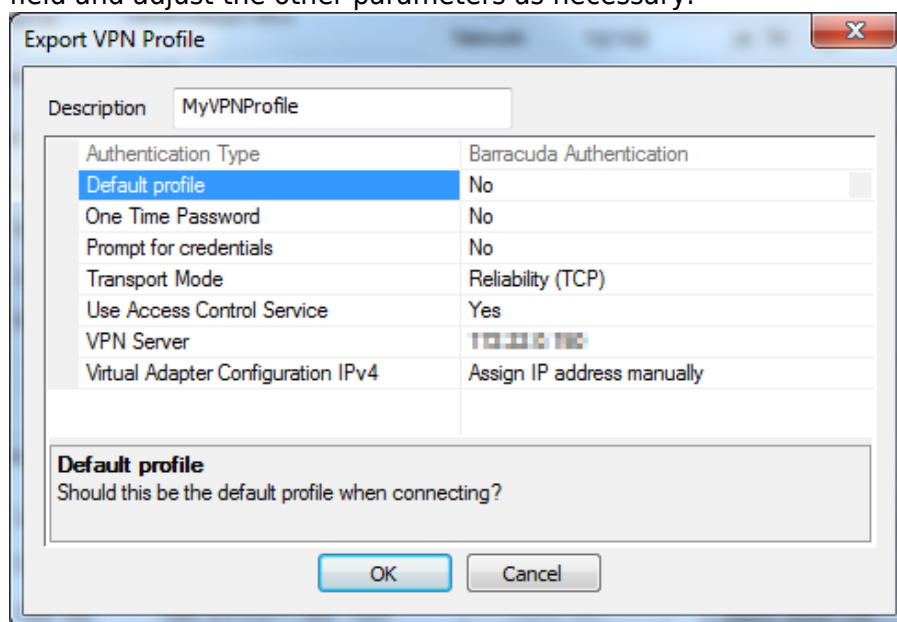
The screenshot shows the 'Change Personal License' dialog box in Barracuda Firewall Admin. The dialog is open for a license named 'barracadavpn-99-1'. The 'Template' dropdown is set to 'test', and the 'Template...' button is highlighted with an orange box. The 'IP Address & Networking' section shows 'Assigned IP' as 'testmm' and 'Nr.' as 'dyn'. The 'ENSA' is set to 'Yes' and 'Split Tunnel' is 'OFF'. The 'VPN Always ON' is set to 'No'. The 'Password and Peer Restriction' section shows 'Scheme' as 'local', 'User ID' as '192168', and 'VPN-Type' as 'Personal + SSL'. The 'Active Certificate' section shows 'License Type' as 'File', 'Certificate' as 'Valid', 'User Key' as 'Valid (JTGGKK) Bits: 2048', and 'Server Key' as 'xxx'. The 'Usage' section shows 'Only allow active key' selected. The 'Export to File...' button is highlighted.

4. Click **Export to File** and select **Export to *.vpn file** to export the VPN profile containing your

license.



- On the **Export VPN Profile** page, enter a meaningful name for the profile into the **Description** field and adjust the other parameters as necessary.

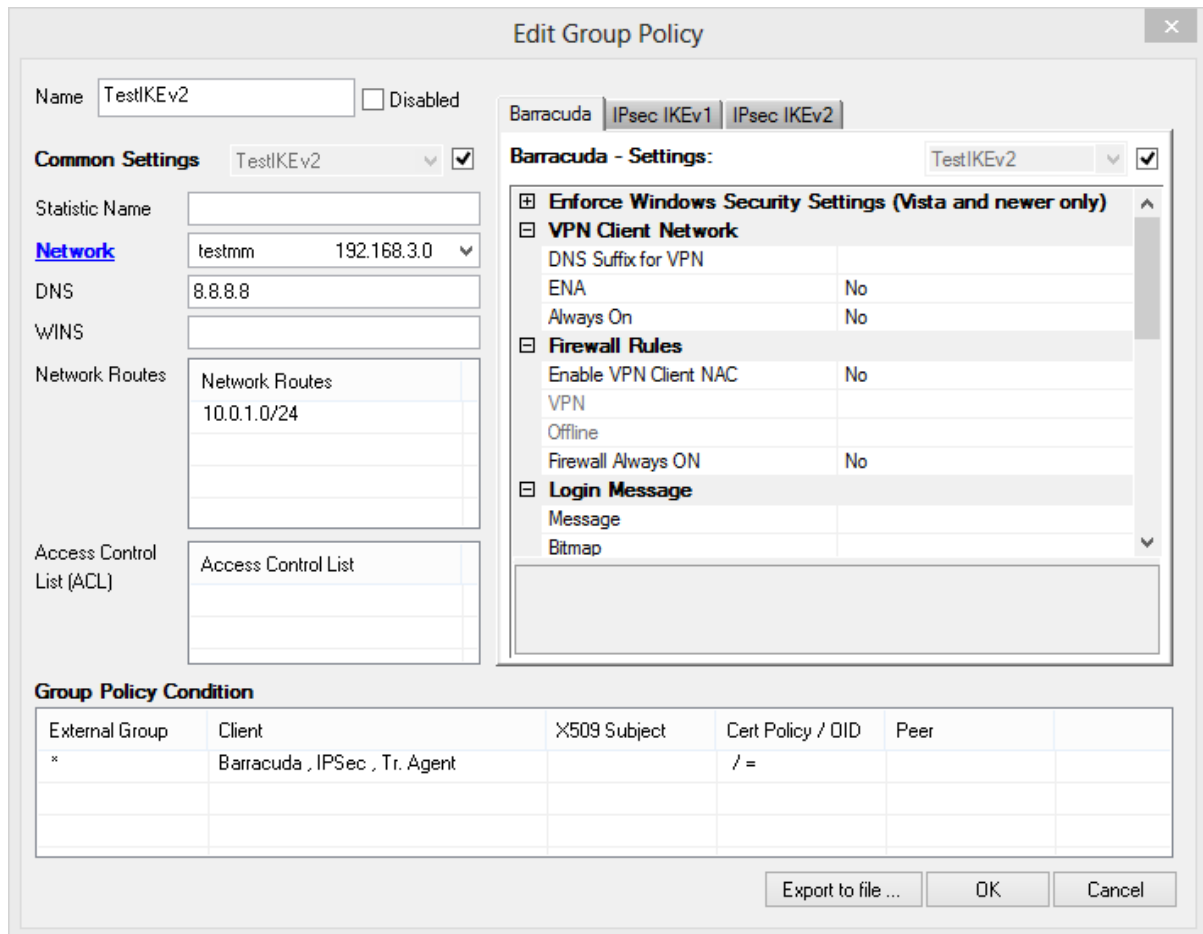


- Click **OK**.
- A dialog appears asking you to set a license password. You can either type in a password and click **OK**, or skip the password configuration by clicking **No Password**.
- Choose a location to save the file, enter a name for the file, and click **Save**.

Creating a Group Policy-based *.vpn File

Before creating the *.vpn file, you must configure a VPN template and configure VPN group settings to be exported in the file.

- In Barracuda Firewall Admin, navigate to **CONFIGURATION > Configuration Tree > Box > Assigned Services > VPN-Service > Client to Site**.
- Click **Lock**.
- Navigate to **Group Policy** in the **External CA** tab.
- Double-click a group policy in the list. The **Edit Group Policy** window opens.



Edit Group Policy

Name: TestIKEv2 ☐ Disabled

Common Settings TestIKEv2 ☒

Statistic Name:

Network testmm 192.168.3.0

DNS: 8.8.8.8

WINS:

Network Routes:

Network Routes
10.0.1.0/24

Access Control List (ACL):

Access Control List

Barracuda - Settings: TestIKEv2 ☒

☒ **Enforce Windows Security Settings (Vista and newer only)**

☒ **VPN Client Network**

DNS Suffix for VPN	
ENA	No
Always On	No

☒ **Firewall Rules**

Enable VPN Client NAC	No
VPN	
Offline	
Firewall Always ON	No

☒ **Login Message**

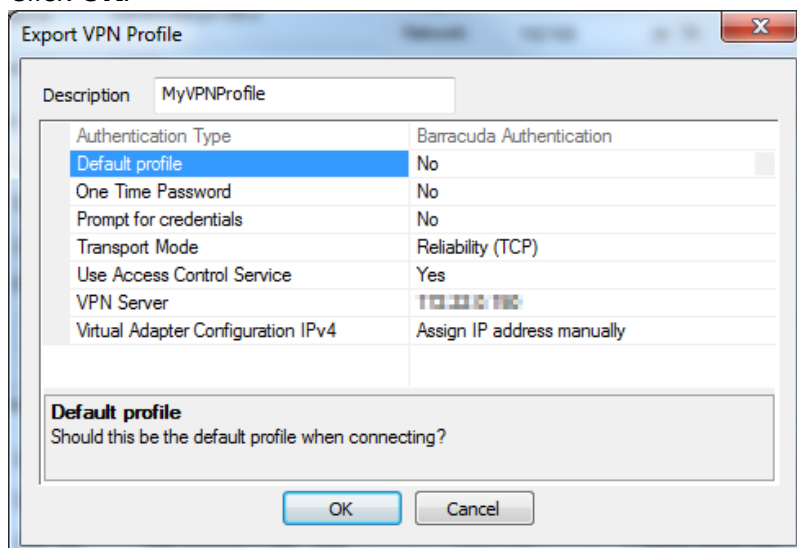
Message	
Bitmap	

Group Policy Condition

External Group	Client	X509 Subject	Cert Policy / OID	Peer
*	Barracuda , IPsec , Tr. Agent		/ =	

Export to file ... OK Cancel

5. If necessary, modify the profile settings as needed.
6. Click **Export to File** in the bottom of the window.
7. On the **Export VPN Profile** page, enter a name for the profile into the **Description** field.
8. Adjust the other parameters as necessary.
9. Click **OK**.



Export VPN Profile

Description: MyVPNProfile

Authentication Type	Barracuda Authentication
Default profile	No
One Time Password	No
Prompt for credentials	No
Transport Mode	Reliability (TCP)
Use Access Control Service	Yes
VPN Server	192.168.1.1
Virtual Adapter Configuration IPv4	Assign IP address manually

Default profile
Should this be the default profile when connecting?

OK Cancel

10. A dialog follows asking you to set a password for the license. You can either type in a password and click **OK**, or skip the password configuration by clicking **No Password**.
11. Choose a location to save the file, enter a name for the file, and click **Save**.

Figures

1. change_pers_lic.png
2. export_vpn_file.png
3. edit_file.png
4. edi_group.png
5. export_vpn_details.png

© Barracuda Networks Inc., 2024 The information contained within this document is confidential and proprietary to Barracuda Networks Inc. No portion of this document may be copied, distributed, publicized or used for other than internal documentary purposes without the written consent of an official representative of Barracuda Networks Inc. All specifications are subject to change without notice. Barracuda Networks Inc. assumes no responsibility for any inaccuracies in this document. Barracuda Networks Inc. reserves the right to change, modify, transfer, or otherwise revise this publication without notice.