

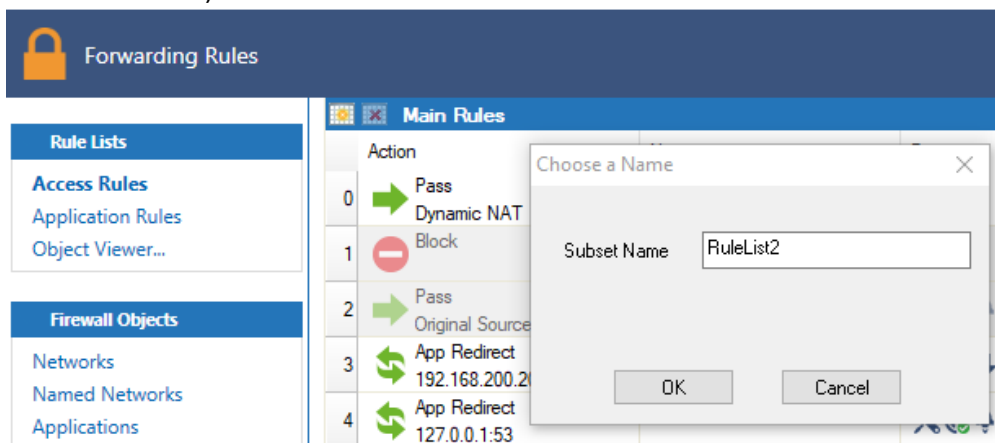
## How to Create New Rule Lists

<https://campus.barracuda.com/doc/79462931/>

For a better overview and organization of your access rule set, you can create additional rule lists to assigning rules a main or sub-priority within the forwarding rule set. You can apply the additional rule lists to traffic by creating a Cascade access rule. For more information, see [How to Create Cascade and Cascade Back Access Rules](#).

### Create a Rule List

1. Go to **CONFIGURATION > Configuration Tree > Box > Assigned Services > Firewall > Forwarding Rules**.
2. Click **Lock**.
3. On the **Access Rules** page, click the yellow table icon in the top left of the rule set (next to **Main Rules**).



4. Enter a name for the rule list and click **OK**.
5. Click **Send Changes** and **Activate**.

After the rule list is created, a tab for it appears next to the **Main Rules** tab on top of the list.



In the new rule list, you can now specify a range of access rules. To switch between rule lists, click the tabs. You can also copy a rule from the main rule list by right-clicking the rule and selecting **Copy** and then right-clicking the additional rule list and selecting **Paste**.

## Figures

1. rule\_list1.png
2. rule\_list2.png

© Barracuda Networks Inc., 2020 The information contained within this document is confidential and proprietary to Barracuda Networks Inc. No portion of this document may be copied, distributed, publicized or used for other than internal documentary purposes without the written consent of an official representative of Barracuda Networks Inc. All specifications are subject to change without notice. Barracuda Networks Inc. assumes no responsibility for any inaccuracies in this document. Barracuda Networks Inc. reserves the right to change, modify, transfer, or otherwise revise this publication without notice.