

## How to Restore the High Availability Cluster Configuration after an RMA

<https://campus.barracuda.com/doc/79463114/>

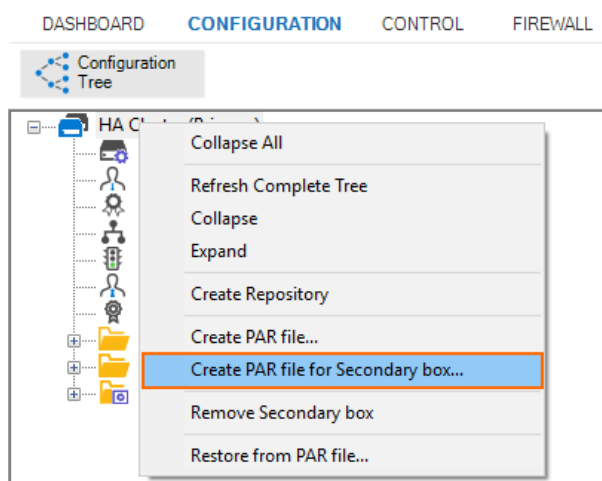
If a CloudGen Firewall residing in an HA cluster gets replaced with a newer revision model of the same product type (e.g., from F400 Rev. A to F400 Rev. B), you must create a configuration backup (PAR file) on the running HA partner and restore the configuration on the new appliance. This typically occurs in RMA cases, or if your appliance is replaced by Barracuda's Hardware Refresh program.

### Replacing the Secondary HA Firewall

If the primary firewall is running, and the secondary firewall was replaced by a new model, restore the configuration from the primary one. Because the primary firewall holds all the information for the secondary firewall, creating the configuration for the secondary firewall is done on the primary one by creating a PAR file that must then be imported on the secondary one.

#### Step 1. Create the PAR File for Restoring the Secondary Firewall

1. Log into the primary firewall.
2. Go to **CONFIGURATION > Configuration Tree**.
3. Right-click **HA-Cluster (Primary)**.
4. In the list, click **Create PAR file for Secondary box...**



5. Save the PAR file.

#### Step 2. Import the PAR File for Configuring the Secondary Firewall

1. Log into the secondary firewall.
2. Go to **CONFIGURATION > Configuration Tree**.
3. Right-click **HA-Cluster (Secondary)**.
4. In the list, click **Restore from PAR file...**

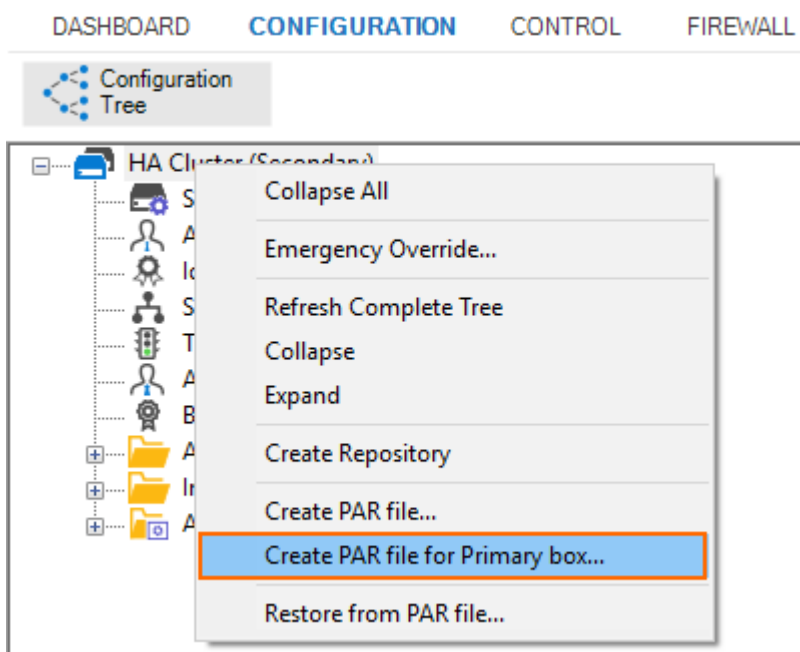
5. Click **Activate**.
6. Go to **CONTROL > Box**.
7. In the left menu, expand **Network** and click **Activate new network configuration**.
8. Select **Failsafe** as the activation mode.
9. In the left menu, expand **Operating System** to expand the menu.
10. Click **Reboot Box**.

## Replacing the Primary HA Firewall

If the secondary firewall is running, and the primary firewall was replaced by a new model, restore the configuration from the secondary one. Because the secondary firewall holds all the information for the primary firewall, creating the configuration for the primary firewall is done on the secondary one by creating a PAR file that must then be imported on the primary one .

### Step 1. Create the PAR File for Restoring the Primary Firewall

1. Log into the secondary firewall.
2. Go to **CONFIGURATION > Configuration Tree**.
3. Right-click **HA-Cluster (Secondary)**.
4. In the list, click **Create PAR file for Primary box... .**



5. Save the PAR file.

### Step 2. Import the PAR File for Configuring the Primary Firewall

1. Log into the primary firewall.
2. Go to **CONFIGURATION > Configuration Tree**.
3. Right-click **HA-Cluster (Primary)**.

4. In the list, click **Restore from PAR file...**
5. Click **Activate**.
6. Go to **CONTROL > Box**.
7. In the left menu, expand **Network** and click **Activate new network configuration**.
8. Select **Failsafe** as the activation mode.
9. In the left menu, expand **Operating System** to expand the menu.
10. Click **Reboot Box**.

## Figures

1. HA\_create\_PAR\_file\_for\_secondary.png
2. HA\_create\_PAR\_file\_for\_primary.png

© Barracuda Networks Inc., 2019 The information contained within this document is confidential and proprietary to Barracuda Networks Inc. No portion of this document may be copied, distributed, publicized or used for other than internal documentary purposes without the written consent of an official representative of Barracuda Networks Inc. All specifications are subject to change without notice. Barracuda Networks Inc. assumes no responsibility for any inaccuracies in this document. Barracuda Networks Inc. reserves the right to change, modify, transfer, or otherwise revise this publication without notice.