

## Getting Started - Control Center

<https://campus.barracuda.com/doc/79463137/>

For Firewall Control Centers installed via Barracuda Firewall Install, do not use the CC Wizard. For more information, see [Getting Started - Control Center without CC Setup Wizard](#).

Complete the CC Wizard to configure all necessary box layer and Control Center settings. The CC Wizard can be launched from the options menu or automatically starts when logging into a new Control Center on box layer.

### Before You Begin

- The CC Wizard can be used only on new or freshly installed Control Centers.
- Virtual Control Centers require a license token for activation. The license token is included in the email received from Barracuda Customer Support after purchasing the Control Center license.

### Step 1. Start the CC Wizard

The CC Wizard will launch automatically when logging into a new Control Center or can be launched from the options menu in Barracuda Firewall Admin:

#### Wizard Starts Automatically on First Login

Log into the box layer of a new Control Center to use the CC Setup Wizard.

1. Launch Barracuda Firewall Admin.
2. Select **Firewall** to log into the Control Center box layer:
  - **IP Address / Name** - If you are using a hardware Control Center appliance, enter 192.168.200.200. For virtual Control Centers, enter the IP address you set during deployment.
  - **Password** - Enter the default password: ngf1r3wall.

## Barracuda CloudGen Firewall

Firewall  Control Center  SSH

IP Address / Name

Username

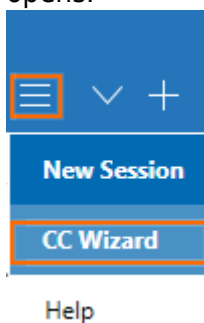
Password

3. Click **Sign In**. The **CC Setup Wizard** window opens.

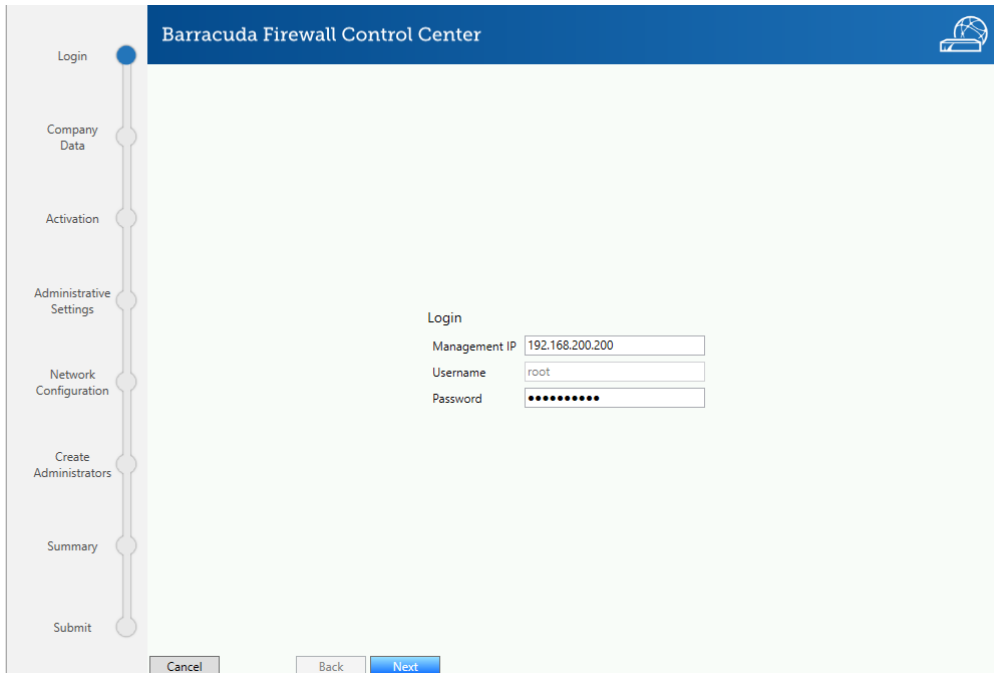
### Launch the CC Wizard Manually

The CC Setup Wizard can also be accessed by the options menu in Barracuda Firewall Admin.

1. Launch Barracuda Firewall Admin.
2. In the top left, click the hamburger menu and select **CC Wizard**. The **CC Setup Wizard** window opens.



3. Log into the Control Center:
  - **Management IP** - If you are using a hardware Control Center appliance, enter 192.168.200.200. For virtual Control Centers, enter the IP address you set during deployment.
  - **Password** - Enter the default password: ngf1r3wall.



The screenshot shows the Barracuda Firewall Control Center installation wizard. The 'Login' step is selected in the left-hand navigation pane. The main area shows a 'Login' section with three input fields: 'Management IP' (192.168.200.200), 'Username' (root), and 'Password' (masked with dots). At the bottom, there are 'Cancel', 'Back', and 'Next' buttons.

4. Click **Next**.

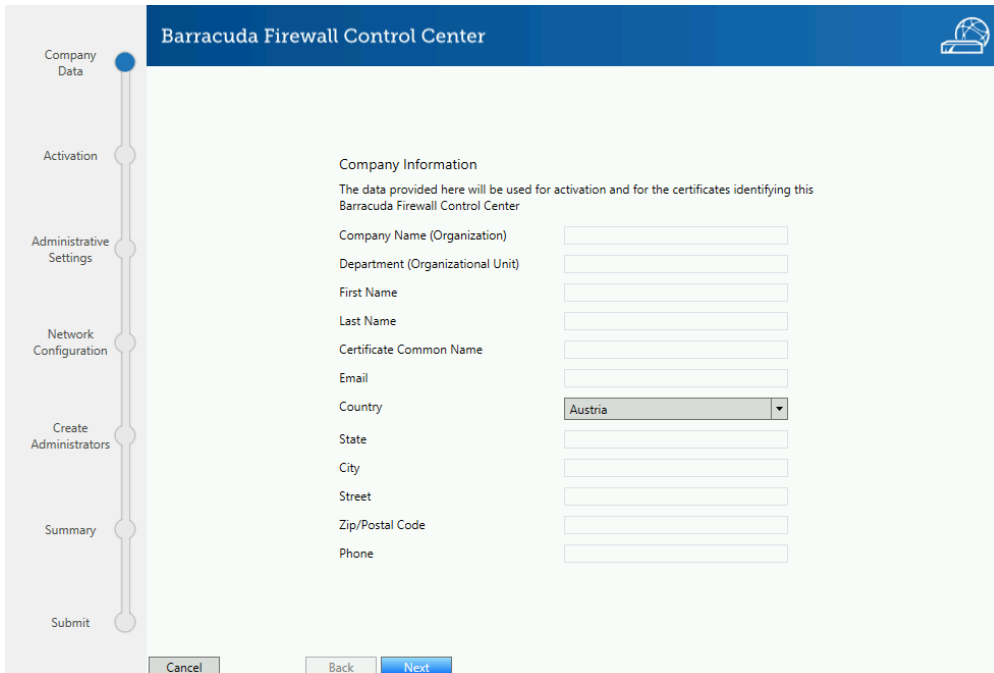
## Step 2. Enter your Company Data

You must enter your company data to supply the information needed for:

- Control Center license activation
- Box level certificates
- CC certificates
- Activation template used on the Control Center to activate managed CloudGen Firewalls.
- System email address.

1. Enter the following information:

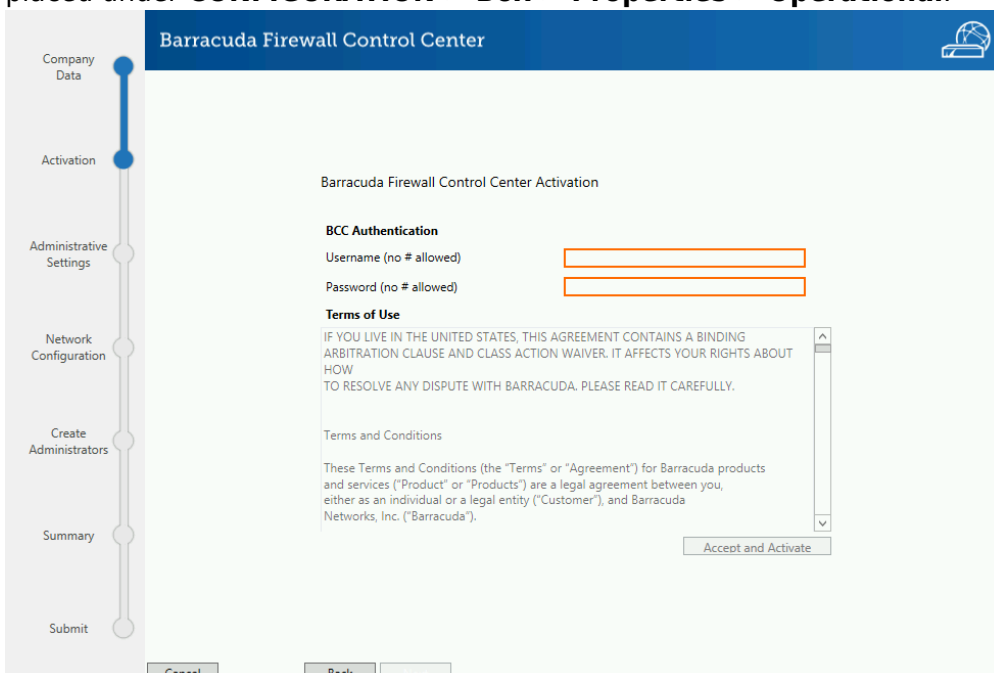
- **Company Name**
- **Department**
- **First Name**
- **Last Name**
- **Certificate Common Name**
- **Email** – After successful activation, a confirmation email is sent to this email address.
- **Country**
- **State**
- **City**
- **Street**
- **ZIP/Postal Code**
- **Phone**



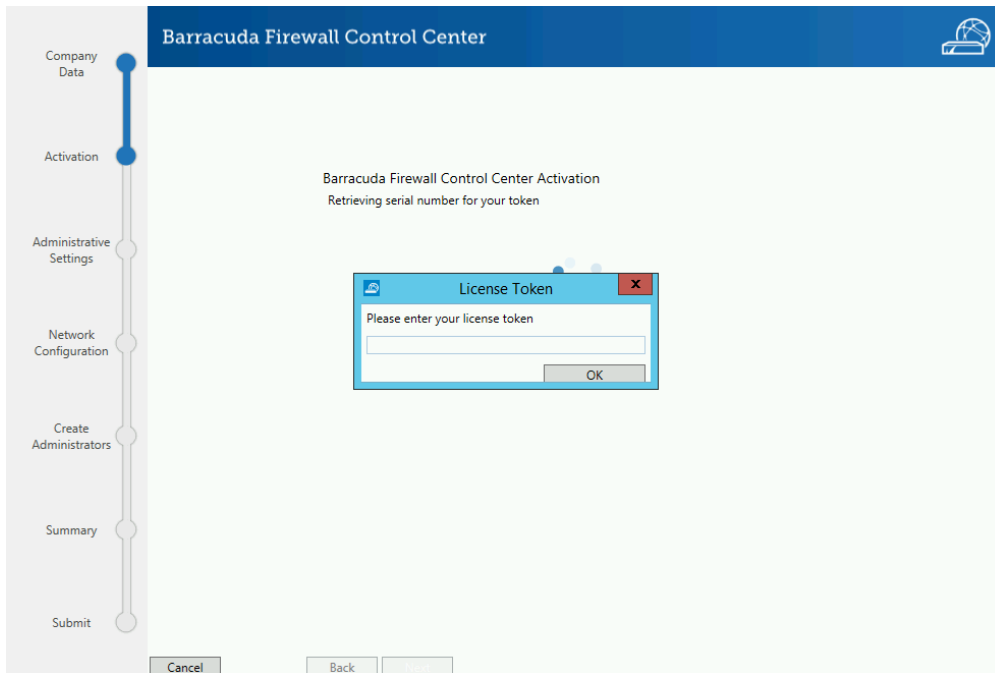
2. Click **Next**.

### Step 3. Activate the Control Center

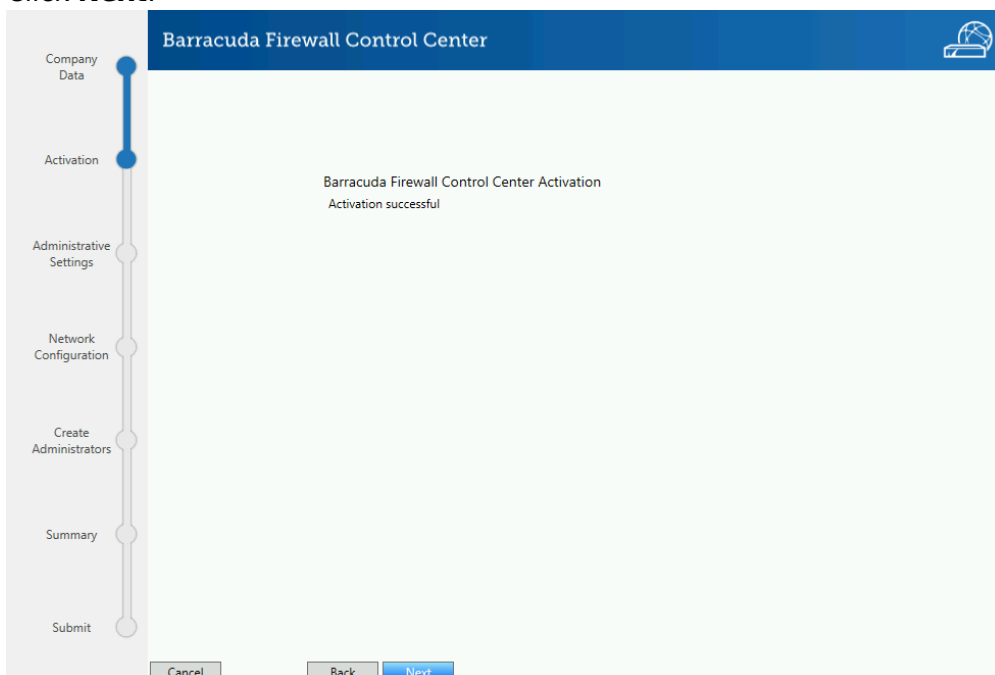
1. Barracuda Control Center (BCC) Activation will ask you for the **Username** and the **Password**. These credentials will later be used to automatically download licenses without additional authentication. The Control Center Wizard will place the credentials in **Global Settings > CC Parameters > BCC Authentication**. On a single box, **Username** and **Password** will be placed under **CONFIGURATION > Box > Properties > Operational**.



2. Accept the **Terms of Use** to download, install, and activate the licenses. If you are using a virtual Control Center, you are prompted to enter the license token you received from Barracuda Customer Support after purchasing the license. Customer data entered in Step 1 is used to complete the contact information in the activation form.
3. Click **Accept and Activate**.
4. If you are using a virtual Firewall Control Center, enter the **License Token**: E.g., XXXXX-XXXXX-XXXXX



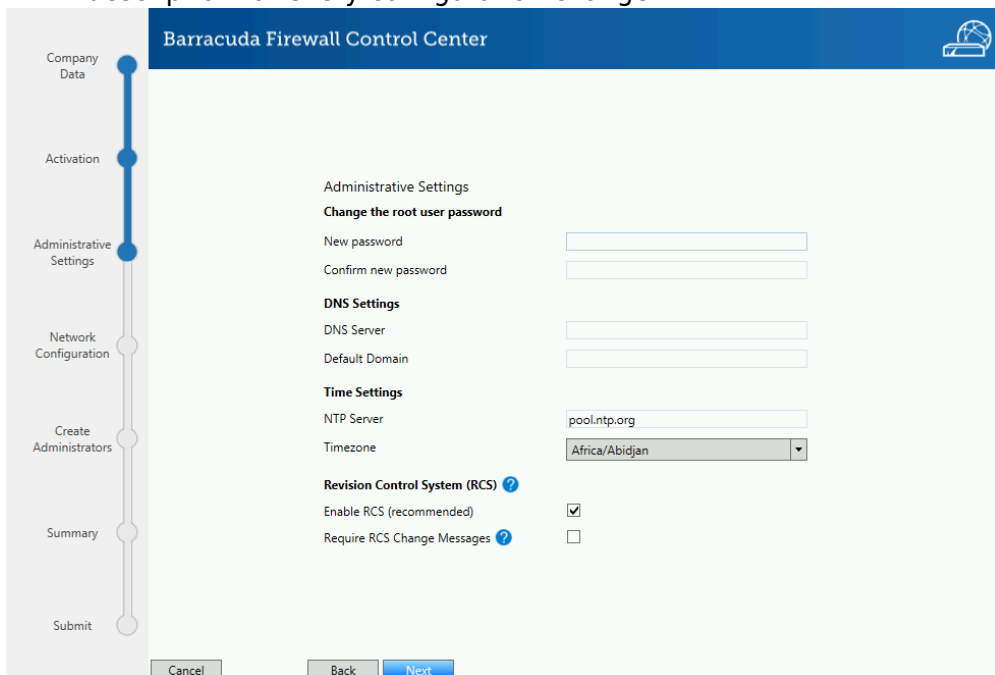
5. Click **OK**.
6. Click **Next**.



## Step 4. Administrative Settings

Enter administrative settings for your Control Center. Enabling the Revision Control System (RCS) is strongly recommended.

1. **Change the root user password.** Depending on the password strength, the background of the **New password** textbox is green (strong), yellow (medium), or red (weak).
2. Enter the **DNS Settings**:
  - **DNS Server** – Enter the IP address for the primary DNS server on your network.
  - **Default Domain** – Enter the default domain.
3. Enter the **NTP Settings**:
  - **NTP Server** – Enter an IP address or hostname for your preferred NTP server.
  - **Timezone** – Select the time zone from the drop-down menu.
4. Enable **Revision Control System (RCS)**:
  - **Enable RCS (recommended)** – Enable to allow the administrator to view and, if necessary, revert configuration changes made on the Control Center.
  - **Require RCS Change Messages** – Enable this option to force the admin to enter a description for every configuration change.



**Barracuda Firewall Control Center**

Company Data

Activation

Administrative Settings

Network Configuration

Create Administrators

Summary

Submit

Administrative Settings

**Change the root user password**

New password

Confirm new password

**DNS Settings**

DNS Server

Default Domain

**Time Settings**

NTP Server

Timezone

**Revision Control System (RCS)**

Enable RCS (recommended)

Require RCS Change Messages

Cancel Back Next

5. Click **Next**.

## Step 5. Network Configuration

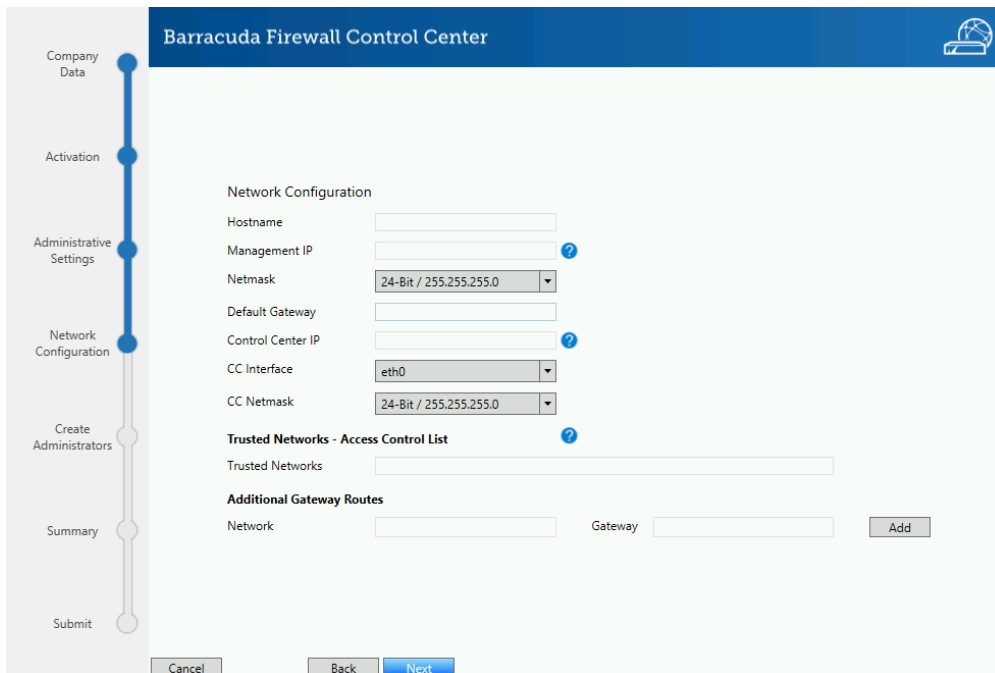
Configure basic network settings, such as management and Control Center IP address, gateway

routes, and trusted networks (management ACLs).

1. Enter a **Hostname** for your CC.
2. (optional) Change the **Management IP**.
3. Select the **Netmask** from the drop-down menu.
4. Enter the **Default Gateway**.
5. Enter the **Control Center IP**. If the Control Center IP and the **Management IP** are configured to be in the same subnet, the list for **CC Interfaces** will be disabled. If these two IPs differ, the menu **CC Interfaces** is enabled to select another interface.
6. Select the **Netmask** from the drop-down menu.
7. (optional) Enter all **Trusted Networks** that are allowed to access the Control Center.

Incorrect trusted networks (management ACLs) prevent you from connecting to your Control Center. For more information, see [How to Change the Root Password and Management ACL](#).

8. For each **Additional Gateway Route**:
  1. Enter the destination **Network** and **Gateway**.
  2. Click **Add**.

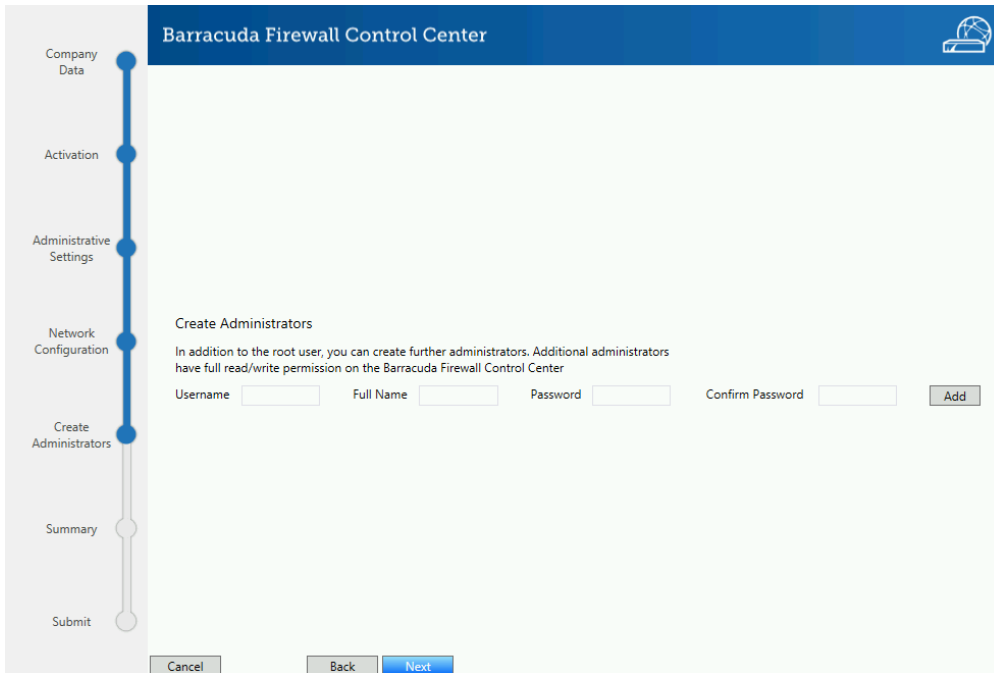


9. Click **Next**.

## Step 6. (optional) Create Administrators

You can create additional administrators. All administrators created have full read/write permissions on the Control Center and also full access to the box layer. If you want to use an external authentication server, create the CC admins after completing the CC Wizard. For more information, see [Control Center Admins](#).

1. For each additional administrator, enter the following settings and click **Add**.
  - **Username** – Enter a username.
  - **Full Name** – Enter the full name of the user.
  - **Password / Confirm Password** – Enter a password. Depending on the password strength, the background of the **Password** textbox is green (strong), yellow (medium), or red (weak).



2. Click **Next**.

## Step 7. Review Configuration Summary

1. (optional) Click **Print Summary** to print the configuration settings on the system's default printer.
2. (recommended) Click **Save Summary** to save a text file containing the configuration parameters collected by the CC Setup wizard.
3. Click **Next**.

## Step 8. Submit the Configuration

The CC Wizard now sends and activates all configuration settings collected in Steps 1 to 7. If one configuration step fails, use the **Back** button to go back and change the configuration. You can then resubmit the settings to finish the configuration of the Control Center. When the configuration changes are complete, click **Finish**. The CC Setup Wizard is automatically disabled for this Control Center.



## Next Steps

Use the CC IP Address to connect to the Control Center.

# Barracuda CloudGen Firewall

Firewall
  Control Center
  SSH

IP Address / Name

Username

Password

Add to Favorites

	Link
Create Admins	<a href="#">Control Center Admins</a>
Configure Central Management	<ul style="list-style-type: none"> <li>• <a href="#">Central Management</a></li> <li>• <a href="#">How to Manage Ranges and Clusters</a></li> </ul>
Add a CloudGen Firewall to the Control Center	<ul style="list-style-type: none"> <li>• <a href="#">How to Add a New CloudGen Firewall to the Control Center</a></li> <li>• <a href="#">How to Configure a Remote Management Tunnel for a CloudGen Firewall</a></li> </ul>
Licensing for managed CloudGen Firewalls	<ul style="list-style-type: none"> <li>• <a href="#">How to Assign and Activate Single Licenses on a Control Center</a></li> <li>• <a href="#">How to Install and Assign Pool Licenses on a Control Center</a></li> </ul>
Revision Control System (RCS)	<a href="#">Revision Control System (RCS)</a>

## Figures

1. getting\_started\_1.png
2. cc\_wizard\_02.png
3. cc\_wizard\_path\_01.png
4. cc\_wizard\_path\_02.png
5. cc\_wizard\_path\_03.png
6. cc\_wizard\_path\_04.png
7. cc\_wizard\_path\_05.png
8. cc\_wizard\_path\_06.png
9. cc\_wizard\_path\_07.png
10. cc\_wizard\_path\_08.png
11. cc\_wizard\_15.png

© Barracuda Networks Inc., 2019 The information contained within this document is confidential and proprietary to Barracuda Networks Inc. No portion of this document may be copied, distributed, publicized or used for other than internal documentary purposes without the written consent of an official representative of Barracuda Networks Inc. All specifications are subject to change without notice. Barracuda Networks Inc. assumes no responsibility for any inaccuracies in this document. Barracuda Networks Inc. reserves the right to change, modify, transfer, or otherwise revise this publication without notice.