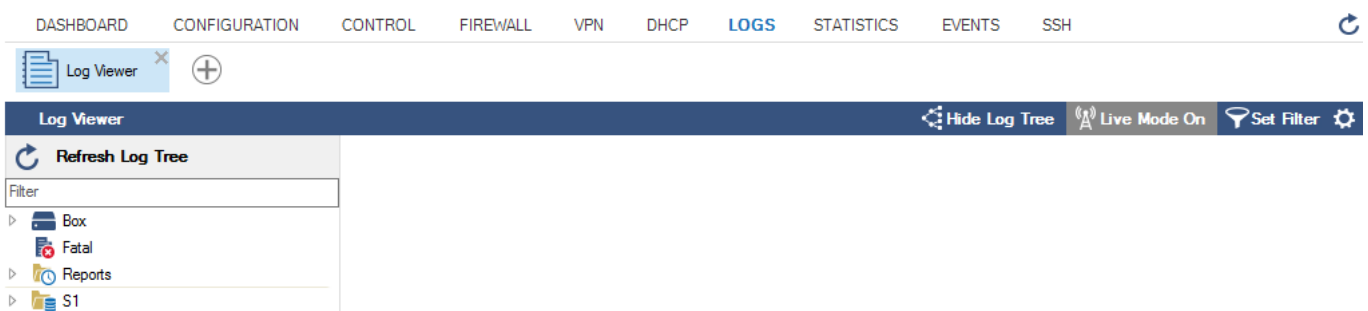


LOGS Tab

<https://campus.barracuda.com/doc/79463208/>

The **LOGS** tab displays system log events of system processes on the box layer and, if present, for the virtual server layer and each configured service. With the Log Viewer, you can inspect logs that are stored in the directory `/var/phion/logs` of a CloudGen Firewall or Control Center. For detailed information on the log file structure and available log files, see [Logging](#).



Log Viewer

The Log Viewer provides you with the following additional features while inspecting logged information:

- **Hide/Show Log Tree** - Hides or displays the hierarchical log file navigation tree.
- **Live Mode** - If set to **On**, shows logged information collected live.
- **Set Filter** - Allows you to specify special filter patterns.



Logged information is organized in a hierarchical tree structure. The triangle to the left of a tree element indicates that the element contains further subcategories. An element without a triangle contains collections of logged information.

The basic elements of the tree structure are:

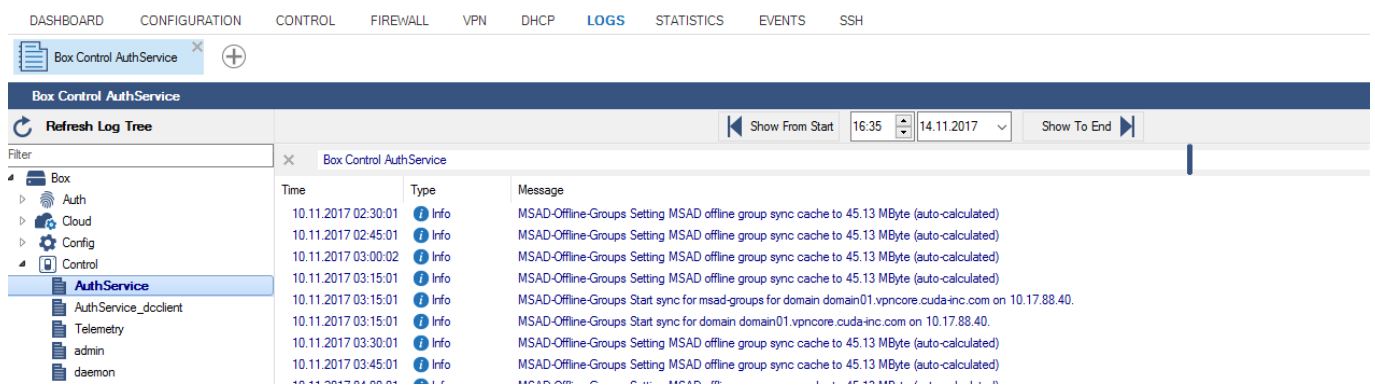
- **Box** - Contains further containers and elements that hold logged information collected from the box level. The name of the included containers is derived from different services and sources that produce log information.
- **Fatal** - All fatal errors that can occur on a firewall are collected in this section, in addition to the original log file. The original log file is added in the fatal log message text as a prefix.
- **Reports** - Reports include subcategories that contain logged information from the creation of reports. For example, Network or Statistics.

- **Server** (i.e., S1) – Information provided by servers or services running on the firewall is distributed in logs under several subcategories.

For more information, see [Available Log Files and Structure](#).

Viewing Log File Entries

Click on the small document symbol in any category within the tree to inspect the collected information.

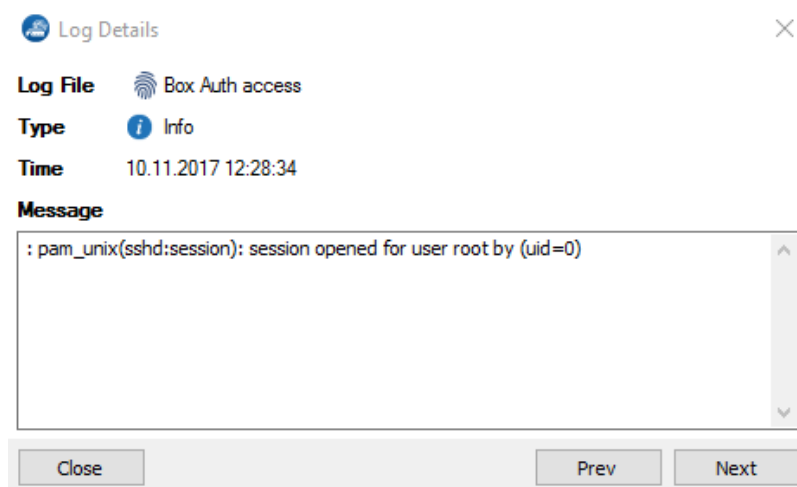


The screenshot shows the 'LOGS' tab in the Barracuda CloudGen Firewall interface. A tree view on the left shows the hierarchy: Box > Control > AuthService. The main panel displays a table of log entries for 'Box Control AuthService'.

Time	Type	Message
10.11.2017 02:30:01	Info	MSAD-Offline-Groups Setting MSAD offline group sync cache to 45.13 MByte (auto-calculated)
10.11.2017 02:45:01	Info	MSAD-Offline-Groups Setting MSAD offline group sync cache to 45.13 MByte (auto-calculated)
10.11.2017 03:00:02	Info	MSAD-Offline-Groups Setting MSAD offline group sync cache to 45.13 MByte (auto-calculated)
10.11.2017 03:15:01	Info	MSAD-Offline-Groups Setting MSAD offline group sync cache to 45.13 MByte (auto-calculated)
10.11.2017 03:15:01	Info	MSAD-Offline-Groups Start sync for msad-groups for domain domain01.vpncore.cuda-inc.com on 10.17.88.40.
10.11.2017 03:15:01	Info	MSAD-Offline-Groups Start sync for domain domain01.vpncore.cuda-inc.com on 10.17.88.40.
10.11.2017 03:30:01	Info	MSAD-Offline-Groups Setting MSAD offline group sync cache to 45.13 MByte (auto-calculated)
10.11.2017 03:45:01	Info	MSAD-Offline-Groups Setting MSAD offline group sync cache to 45.13 MByte (auto-calculated)

Managing Log Files

To view detailed entries for a log file, double-click the message in the column.



The 'Log Details' dialog box displays the following information:

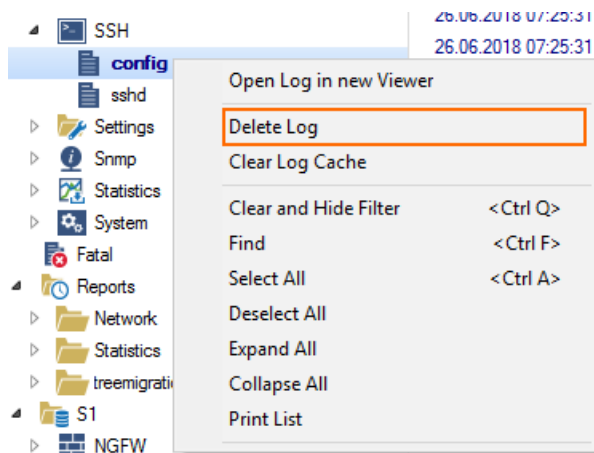
- Log File:** Box Auth access
- Type:** Info
- Time:** 10.11.2017 12:28:34
- Message:** : pam_unix(sshd:session): session opened for user root by (uid=0)

At the bottom of the dialog, there are buttons for 'Close', 'Prev', and 'Next'.

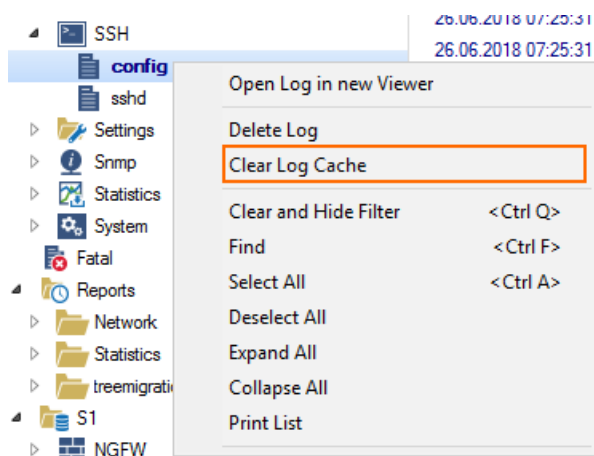
Click **Prev** to show the details of the previous log file. Click **Next** to show the details of the next entry

in the list.

To delete a log file, right-click the log file in the tree and select **Delete Log**.



To clear the log cache, select **Clear Log Cache**.



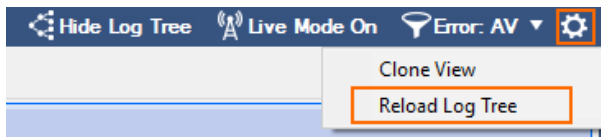
To refresh the tree, click **Reload Log Tree** on top of the navigation.

Clearing the log cache can help correct inaccurate pointers that were set by the **logwrapd** during periods of high log activity. When inaccurate pointers are set, log entries are not filtered correctly by date and time. If clearing the log cache does not help, renew the log cache by restarting the **logwrapd** service on the [Server](#) page.

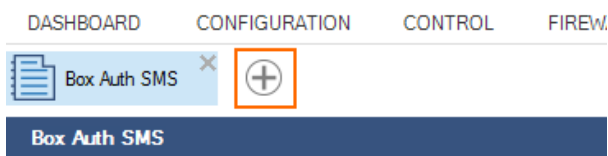
To view log files in real time, set **Live Mode** to **On**.



To update the log tree, click the cogwheel icon on the top right of the window and select **Reload Log Tree**.



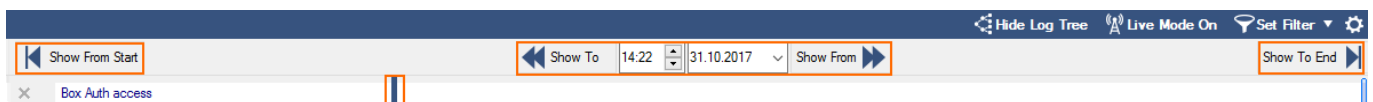
To open an additional log without replacing logs that are currently open, click the + icon at the top of the Log Viewer.



Then, select the log file that you want to view from the Log Tree.

Filter Options

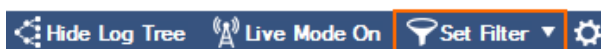
In the navigation section at the top of the **Logs** page, you can specify a time and date to view logs that were created within a set time interval.



To filter log file entries, enter the time and date for the log file in the **Show To** and **Show From** fields. You can also use the slider to select a time span.

Show from Start sets the time filter to the beginning of the log files; **Show from End** sets the filter to the last entry.

To display only a specific entry type, click **Set Filter** at the top right of the window.



The **Log Filter** window opens. Select the desired log file type from the **Entry Type** list, specify the filtering criteria, and click **OK** to apply the filter.

Log Filter ✕

Entry Type ! Error

Filter matches if One of the following applies
 All of the following apply

Case Sensitive

Contains ▼ AV ⊖ ⊕

Clear Filter OK Cancel

The **Set Filter** icon at the top right of the window changes to the filter type. To reset the filter, click and select **Clear Filter**.

To view the log file entry list in full-screen mode, click **Hide Log Tree** at the top right of the window.



Figures

1. log_01.png
2. log_02.png
3. log_03.png
4. log_details.png
5. log_04.png
6. log_05.png
7. log_live.png
8. log_reload.png
9. log_new.png
10. log_time.png
11. log_filter_set.png
12. log_filter.png
13. log_hide.png

© Barracuda Networks Inc., 2019 The information contained within this document is confidential and proprietary to Barracuda Networks Inc. No portion of this document may be copied, distributed, publicized or used for other than internal documentary purposes without the written consent of an official representative of Barracuda Networks Inc. All specifications are subject to change without notice. Barracuda Networks Inc. assumes no responsibility for any inaccuracies in this document. Barracuda Networks Inc. reserves the right to change, modify, transfer, or otherwise revise this publication without notice.