

## How to Change Admin Credentials on Stand-alone Firewalls

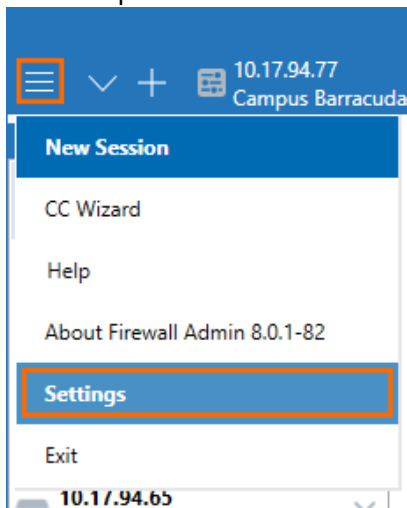
<https://campus.barracuda.com/doc/79463305/>

In the Barracuda Firewall Admin settings, you can configure the password and key for administrators of stand-alone CloudGen Firewalls.

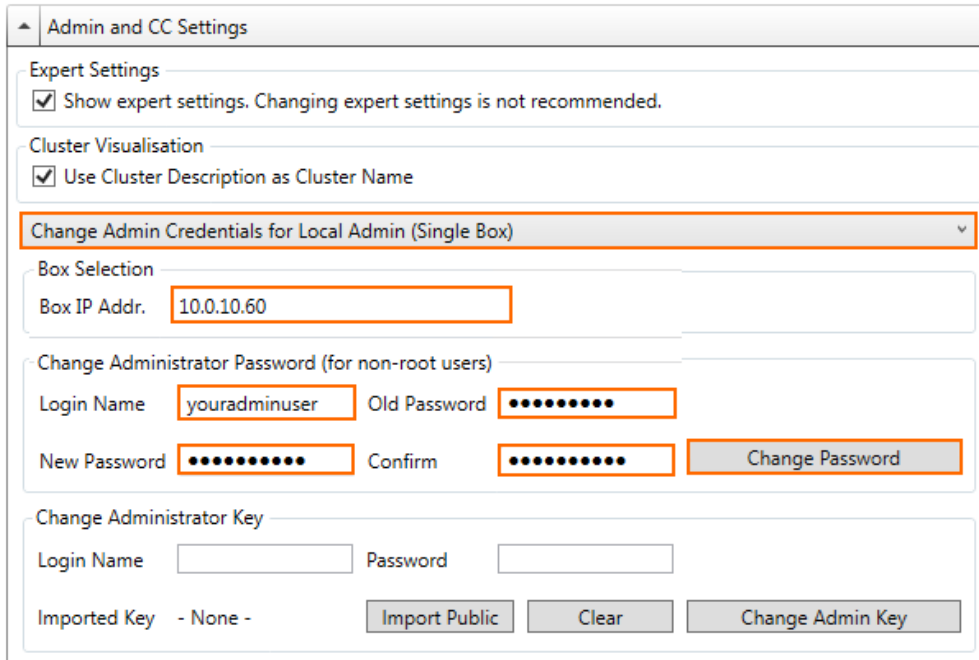
### Change the Password for Non-root Admins

Change the password used to authenticate when connecting to a stand-alone firewall.

1. In the top left of Barracuda Firewall Admin, click the hamburger menu and select **Settings**.



2. Expand **Admin and CC Settings**.
3. Click the list below the **Admin and CC Settings** and select **Change Admin Credentials for Local Admin (Single Box)**.
4. Enter the management IP address as the **Box IP Address**.
5. In the **Change Administrator Password** section enter:
  - o **Login Name**
  - o **Old Password**
  - o **New Password** and **Confirm**



Admin and CC Settings

Expert Settings

Show expert settings. Changing expert settings is not recommended.

Cluster Visualisation

Use Cluster Description as Cluster Name

Change Admin Credentials for Local Admin (Single Box)

Box Selection

Box IP Addr. 10.0.10.60

Change Administrator Password (for non-root users)

Login Name youradminuser Old Password ●●●●●●

New Password ●●●●●● Confirm ●●●●●●

Change Administrator Key

Login Name Password

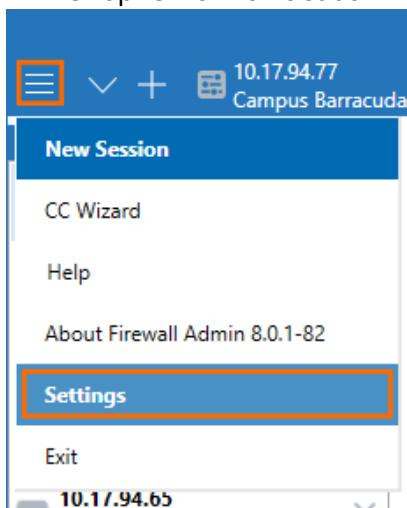
Imported Key - None -

6. Click **Change Password**.

## Change the Administrator Key for Non-root Admins

Change the client certificate used to authenticate when connecting to a stand-alone firewall.

1. In the top left of Barracuda Firewall Admin, click the hamburger menu and select **Settings**.



2. Expand **Admin and CC Settings**.

3. Click the list below the **Admin and CC Settings** and select **Change Admin Credentials for Local Admin (Single Box)**.

4. Enter the management IP address as the **Box IP Address**.

5. In the **Change Administrator Key** section enter the **Login Name** and **Password**.

6. Click **Import Public** and upload the new certificate.

Admin and CC Settings

Expert Settings  
 Show expert settings. Changing expert settings is not recommended.

Cluster Visualisation  
 Use Cluster Description as Cluster Name

Change Admin Credentials for Local Admin (Single Box)

Box Selection  
Box IP Addr.

Change Administrator Password (for non-root users)  
Login Name  Old Password   
New Password  Confirm

Change Administrator Key  
Login Name  Password   
Imported Key - None -

7. Click **Change Admin Key**.

## Figures

1. menu.png
2. change\_admin\_pw\_01.png
3. menu.png
4. change\_admin\_pw\_02.png

© Barracuda Networks Inc., 2019 The information contained within this document is confidential and proprietary to Barracuda Networks Inc. No portion of this document may be copied, distributed, publicized or used for other than internal documentary purposes without the written consent of an official representative of Barracuda Networks Inc. All specifications are subject to change without notice. Barracuda Networks Inc. assumes no responsibility for any inaccuracies in this document. Barracuda Networks Inc. reserves the right to change, modify, transfer, or otherwise revise this publication without notice.