



Firmware Upgrade Policy and Supported Versions

Firmware Upgrade Policy

Verify you are running at least the Legacy Release firmware to ensure compatibility with the Barracuda Backup cloud UI and services such as replication. *Firmware versions older than the latest Legacy Release are not supported.*

Energize Updates

Barracuda Backup requires an Energize Updates subscription for firmware upgrades and Technical Support. Energize Updates are also required to maintain compatibility with the Barracuda Backup Cloud (accessed through login.barracuda.com). Barracuda Backup performs updates to the cloud to maintain compatibility with the latest legacy, general, or early release firmware versions. Barracuda Backup devices with expired Energize Updates running unsupported firmware versions may experience difficulties using the Barracuda Backup Cloud for management as well as services such as data replication.

This does not apply to the local web-based management interface which is accessible for restores or the [Local Control](#) management option.

If your Energize Updates Subscription expires, contact Barracuda Sales to renew your subscriptions.

Note that Barracuda Backup devices managed using [Local Control](#) (independent of Barracuda Cloud Control) has access to firmware releases on a delayed schedule.

Automatic Firmware Upgrades

Barracuda Backup enables administrators to perform manual upgrades at a time that is convenient, however, Barracuda performs automatic upgrades for Barracuda Backup devices with an active Energize Update subscription if they are running unsupported firmware versions.

After a major firmware version has completed the rollout phase, Barracuda sends an upgrade notification, providing 30-day's notice before the upgrade takes place. This notification includes information on new features, bug fixes, and end-of-life announcements. You must subscribe to [email notices](#) to receive the upgrade notifications.

Devices connected via site-to-site replication must be running matching firmware versions to ensure compatibility.

Firmware Release Example

Note that the information listed in the table below may not be current. Go to the **System > Firmware Settings** page in the web interface for the latest firmware availability.

To view all historical firmware releases, refer to [Minimum Supported Versions and Historic Releases](#) below.

Major Firmware Latest Maintenance Release Firmware Upgrade



Version 6.4	6.4.06	Early Release
Version 6.3	6.3.04	General Release
Version 6.2	6.2.04	Legacy Release

Early Release firmware is subject to partial testing. Be aware of the risks before upgrading as firmware versions cannot be reverted.

Minimum Supported Versions and Historic Releases

To ensure interoperability with Barracuda Cloud Control, cloud connected Barracuda Backup systems must run the latest firmware version. Download and install the latest available firmware from the **System > Firmware Settings** in the web interface. Additionally:

- You must have an active Energize Update (EU) subscription and be running the latest minimum supported firmware for Barracuda Cloud Control support
- Firmware version must be upgraded to the latest version (legacy, general, or early)
- If firmware version is not maintained, you will lose interoperability with Barracuda Cloud Control; the local restore browser remains accessible for data recovery
- If your Barracuda Backup product no longer has EU, and there is no intention to renew EU, you can restore from the local UI to manage the system independent of Barracuda Cloud Control

Table 1. Minimum Supported Versions

Current Major Release	Release Date	Minimum Supported Versions	Legacy Release	General Release	Early Release
6.4	June 6, 2017	<ul style="list-style-type: none"> • Firmware version 6.3 • Barracuda Backup Agent 6.3.04 (Windows) • Barracuda Backup Agent 6.3.04 (Linux) • Bare Metal Live CD 6.3.04 (64-bit) • Bare Metal Live CD 6.3.04 (32-bit) • GroupWise Trusted Application Key Generator • Backup Export Tool Archive (BET) • Offsite Vaulting • Cloud LiveBoot • Microsoft Windows, Exchange, SQL, and Hyper-V support • VMware support • Site-to-site replication • Supported servers and data types 	6.3.04	6.4.04	6.4.06

Table 2. Historic Releases



Version	Release Date	Main Feature(s)	Description
			<ul style="list-style-type: none"> The Dashboard has been redesigned for an improved the user experience. When looking at their backup account, customers and resellers will get an aggregate view of all their units. This view changes during Barracuda Backup appliance selection to view specific detail about a selected unit.
6.4	June 6, 2017	New Dashboard Configure Barracuda Backup Vx to replicate to a physical appliance	<ul style="list-style-type: none"> You can configure the Barracuda Backup Vx appliance to replicate bi-directionally to another Barracuda Backup Vx or to a Barracuda Backup appliance. With a Receiver Vx subscription, you can pair a physical appliance and a Barracuda Receiver Vx, one-to-one. Replication from physical appliances to a Receiver Vx is limited to Barracuda Backup models 190 through 690.
6.3	July 25, 2016	Backup Agent Update and exporting to AWS Storage Gateway-VTL	Boosts initial backup speed and recovery performance by up to 1.5-2x on large files and up to 3x for file server backups with millions of small files with the Barracuda Backup Agent for Windows and Linux.
6.2	August 2015	Backup Summary Report	New Barracuda Backup Summary Report, reporting downloads and improved granularity for scheduling.
6.1	June 2015	Export to tape or disk	Export historical data from Barracuda Backup using the Backup Export Tool.
6.0	September 2014	Local Control	Administer your Barracuda Backup appliance independently of Barracuda Networks' Cloud in a "connectionless" state.
5.4	January 2014	Offsite Vaulting	Extend offsite retention policies for up to twelve monthly and seven yearly revisions.
5.3	September 2013	<ul style="list-style-type: none"> Microsoft Windows 8/2012 Microsoft Exchange 2013 Microsoft SQL 2012 Microsoft Hyper-V 2012 CSV 	Support for Microsoft's latest version of Windows, Exchange, SQL, and Hyper-V.
5.2	May 2013	Cloud LiveBoot	Instantly boot a virtual machine from Barracuda's Cloud.
5.1	February 2013	Restore to Copy Large Items Reporting	Restore data to a Copy account for synchronization and sharing.
5.0	December 2012	LiveBoot	Boot a virtual server instantly from Barracuda's local storage.
4.3	July 2012	Barracuda Backup 1090 64-bit hardware	New high capacity backup appliance and update all systems to the 64-bit architecture.
4.2	April 2012	VMware Support	Agentless VMware backups using the vStorage APIs.
4.1	November 2011	Bare Metal Recovery	Perform a full system restore without installing the operating system.
4.0	June 2011	Box-to-box replication	Deprecated support for Windows 2000. Offsite replication between Barracuda Backup appliances

How to Manually Upgrade Firmware

When the Barracuda Backup firmware is updated, all associated Agents are automatically updated to the latest build when the scheduled backup runs.

Upon upgrading to a major firmware version, the Backup Agent performs a one-off consistency check which may result in a longer running backup schedule.



To manually upgrade Barracuda Backup firmware:

1. Log into Barracuda Backup, and go to the **SYSTEM > Firmware** page.
2. From the **Firmware Upgrade Policy** drop-down menu, select **Manual**.
3. In the **Manual Firmware Update Availability** section, click on the firmware release you wish to download to your local system.
4. Upload the firmware using the tools in the **Barracuda Backup Appliance Firmware** section. Click **Save** at the top of the page once the firmware upgrade is complete.

Review the Release Notes after upgrading your firmware for important updates.

How to Upgrade Firmware

When you log in to the Barracuda Backup web interface, if there is a newer version of firmware available (based on the currently selected **Firmware Upgrade Policy**), the **Dashboard** page displays a notification banner across the top of the page. Click **Upgrade Now** to proceed to the **System > Firmware Settings** page to upgrade your firmware, or click **Dismiss** to hide the banner until the next time you log into the web interface.

When the Barracuda Backup firmware is updated, all associated Agents are automatically updated to the latest build when the scheduled backup runs.

Upon upgrading to a major firmware version, the Backup Agent performs a one-off consistency check which may result in a longer running backup schedule.

To upgrade Barracuda Backup firmware:

1. Log in to Barracuda Backup, and go to the **System > Firmware Settings** page.
2. From the **Firmware Upgrade Policy** drop-down menu, select the upgrade policy from the following options:
 - **Legacy Release** - Access a previously installed version of the firmware; do not select this option unless directed to do so by [Barracuda Networks Technical Support](#).
 - **General Release** - The latest generally available version of the firmware available for use on Barracuda Backup; recommended.
 - **Early Release** - The newest firmware versions available for early access to Barracuda Backup; do not select this option until thoroughly reading the release notes.
3. Click **Check for new firmware**, and allow the system to check for a newer version of firmware.
4. If a new firmware release is available, click **Upgrade Now** and allow the system to update.
5. Click **Save** at the top of the page once the firmware upgrade is complete.

Review the Release Notes after upgrading your firmware for important updates.

How to Upgrade Firmware on a Local Control Appliance

Local Control is no longer available to new customers, but will continue to be supported for existing customers.

This article refers to the [Barracuda Backup Legacy Release](#) firmware or newer in Local Control.

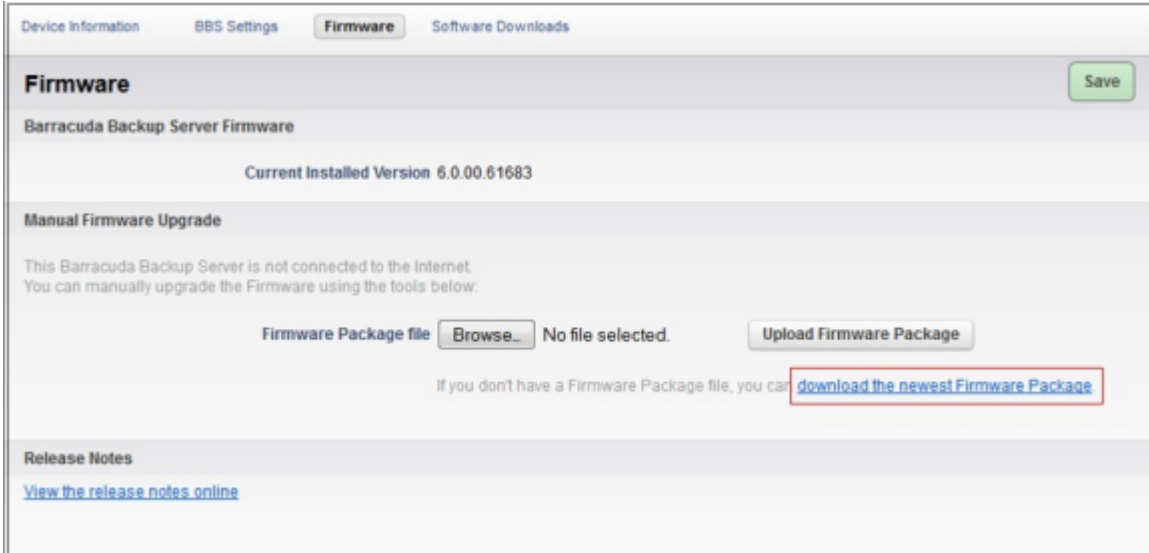
Before enabling [Local Control](#), to receive firmware update notifications, you must configure an email contact



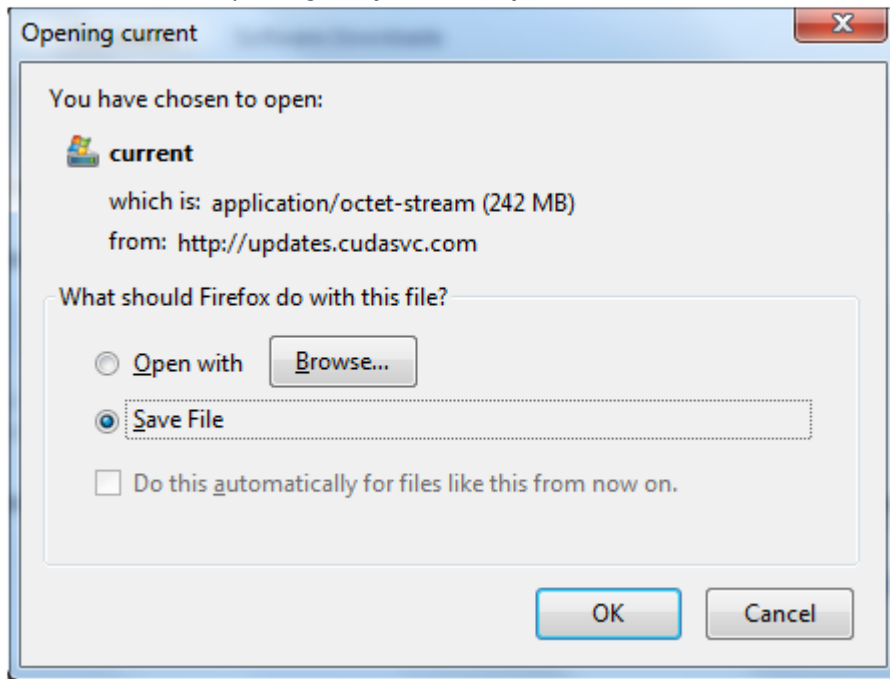
within Barracuda Cloud Control. This is usually the email account you use when setting up your Barracuda Cloud Control account.

To upgrade the firmware on a Local Control appliance:

1. Log into the Barracuda Backup Local Control web interface, and go to the **System > Firmware** page.
2. Click **download the newest Firmware Package**:



3. Save the firmware package to your local system:



4. In the web interface, to the right of **Firmware Package file**, click **Browse**, and select the firmware package you downloaded to your local system:



Device Information BBS Settings **Firmware** Software Downloads

Firmware

Save

Barracuda Backup Server Firmware

Current Installed Version 6.0.00.61683

Manual Firmware Upgrade

This Barracuda Backup Server is not connected to the Internet.
You can manually upgrade the Firmware using the tools below:

Firmware Package file Browse... No file selected. Upload Firmware Package

If you don't have a Firmware Package file, you can [download the newest Firmware Package](#).

Release Notes

[View the release notes online](#)

5. Once the file is selected, click **Upload Firmware Package**:

Device Information BBS Settings **Firmware** Software Downloads

Firmware

Save

Barracuda Backup Server Firmware

Current Installed Version 6.0.00.61683

Install New Firmware

An uploaded Firmware Package is available to install.

Upgrade Now

Manual Firmware Upgrade

This Barracuda Backup Server is not connected to the Internet.
You can manually upgrade the Firmware using the tools below:

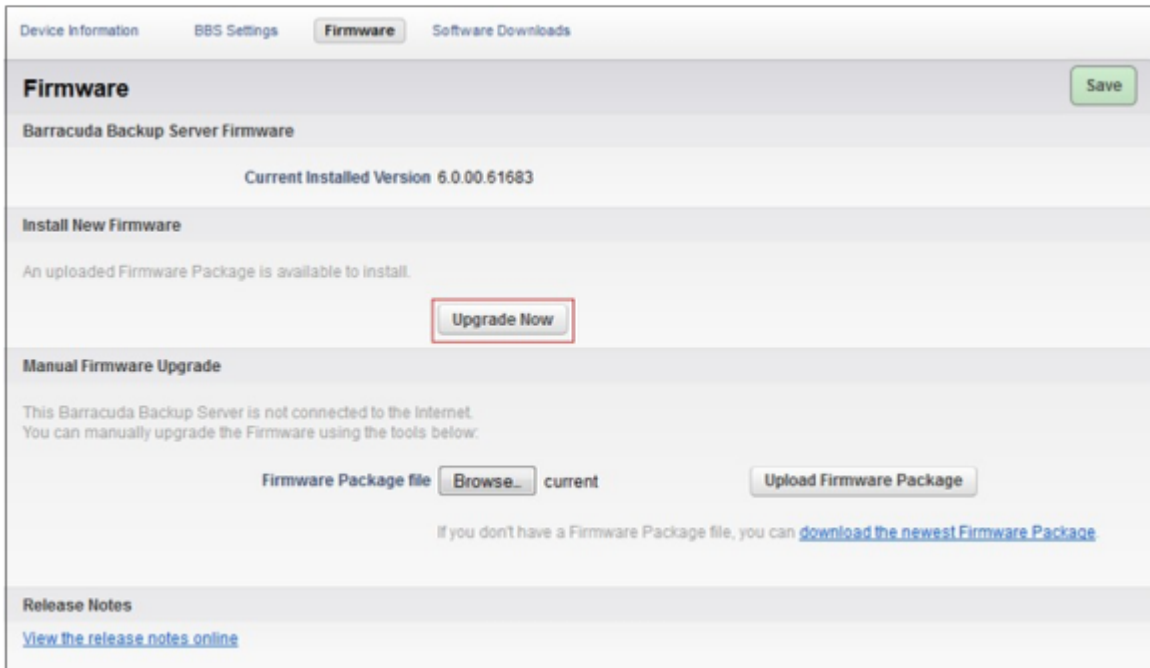
Firmware Package file Browse... current Upload Firmware Package

If you don't have a Firmware Package file, you can [download the newest Firmware Package](#).

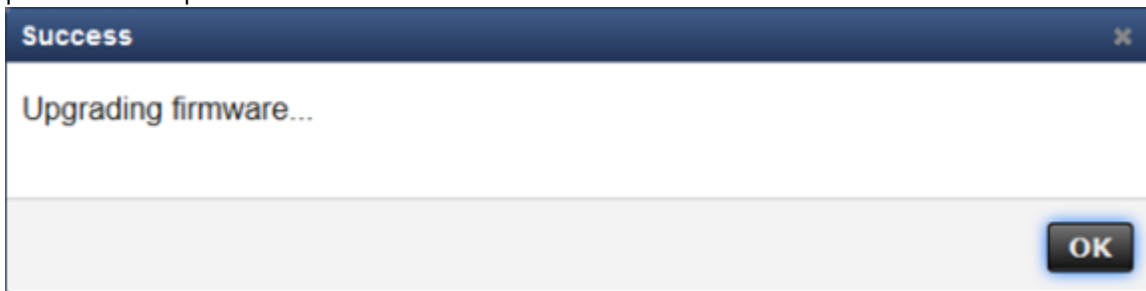
Release Notes

[View the release notes online](#)

6. The firmware package is now loaded. Click **Upgrade Now** to begin the firmware upgrade:



7. Allow the upgrade to complete; this may take up to 10 minutes. A notification displays when the upgrade process is complete:



8. Click **OK** to close the notification. Allow approximately 10 minutes for services to update and restart. Refresh your browser to see the changes in the web interface.

