
Connecting to the Data Layer

<https://campus.barracuda.com/doc/84313934/>

This section provides detailed information about the following topics:

- How to Connect
- Using the OData Feed (Cloud)
- Using SQL Server (On-Premise)
- Samples

How to Connect

There are two options to connect to the data layer, depending on your edition of Barracuda Managed Workplace. Some common BI tools that can be used to connect are Power BI, Excel and Tableau.

Using the OData Feed (Cloud)

1. In your BI tool, select the OData data source type
2. Type the URL to your OData feed, in the form of `https://<service center URL>/odata/v1`, where `<service center URL>` is the URL of your Service Center.
Note: For example, if the URL of your Service Center is `eu02.ccrmm.cuda.com`, then the URL to your OData feed would be `https://eu02.ccrmm.cuda.com/odata/v1`.
3. When you are prompted for credentials, select Basic as the authentication mechanism.
4. Type your Barracuda Managed Workplace VAR Domain\Username as the username and your password.

The user account must be in the Administrator role.

Using SQL Server (On-Premise)

1. In your BI tool, select the SQL Server data source type.
2. When prompted for credentials, use the SCRptUser SQL login that was created for you when you deployed the rpt schema views.
Note: The password must be reset before it can be used.

Samples

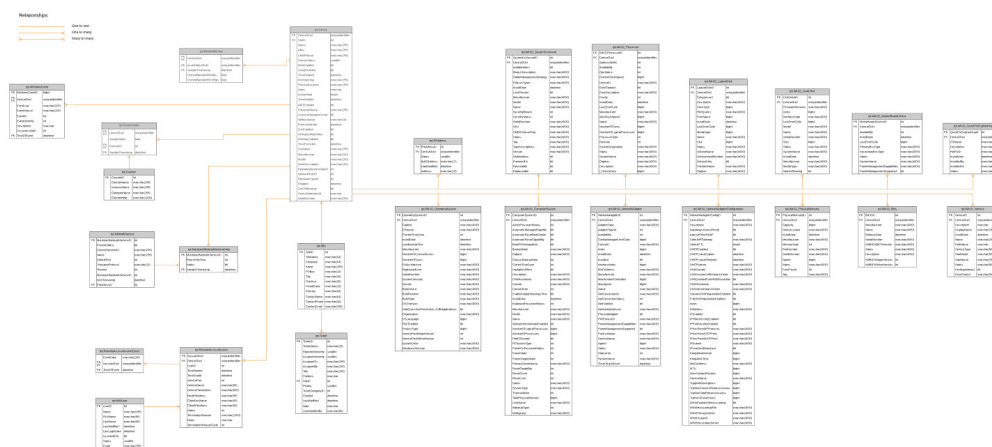
Below are a collection of Power BI samples that you can use for inspiration. To use any of these samples, simply open it up in Power BI Desktop and click Cancel while it attempts to load the data. Then, select Edit Queries > Data source settings > Change Source... to change the connection to your

specific data source. Please check back from time to time for new samples.

- [OData Barracuda Managed Workplace Devices Template](#)
- [SQL Barracuda Managed Workplace Devices Template](#)

Data Model

To see an interactive graphic of the data model, click the graphic below.



Figures

1. DataModel.jpg

© Barracuda Networks Inc., 2024 The information contained within this document is confidential and proprietary to Barracuda Networks Inc. No portion of this document may be copied, distributed, publicized or used for other than internal documentary purposes without the written consent of an official representative of Barracuda Networks Inc. All specifications are subject to change without notice. Barracuda Networks Inc. assumes no responsibility for any inaccuracies in this document. Barracuda Networks Inc. reserves the right to change, modify, transfer, or otherwise revise this publication without notice.