

Configuring an IMAP or POP3 Journal Account for Microsoft Exchange Server 2007 and 2010

<https://campus.barracuda.com/doc/9011891/>

This article refers to [Barracuda Message Archiver Legacy Release](#) firmware or higher, and Microsoft Exchange Server 2007 and 2010.

Barracuda Networks recommends deploying your Barracuda Message Archiver with Microsoft Exchange Server 2007/2010 using the [push method](#), alternately, you can set up IMAP or POP3 journal accounts as described in this article.

You can configure the Barracuda Message Archiver to automatically retrieve messages directly from your mail server using the IMAP or POP3 protocol.

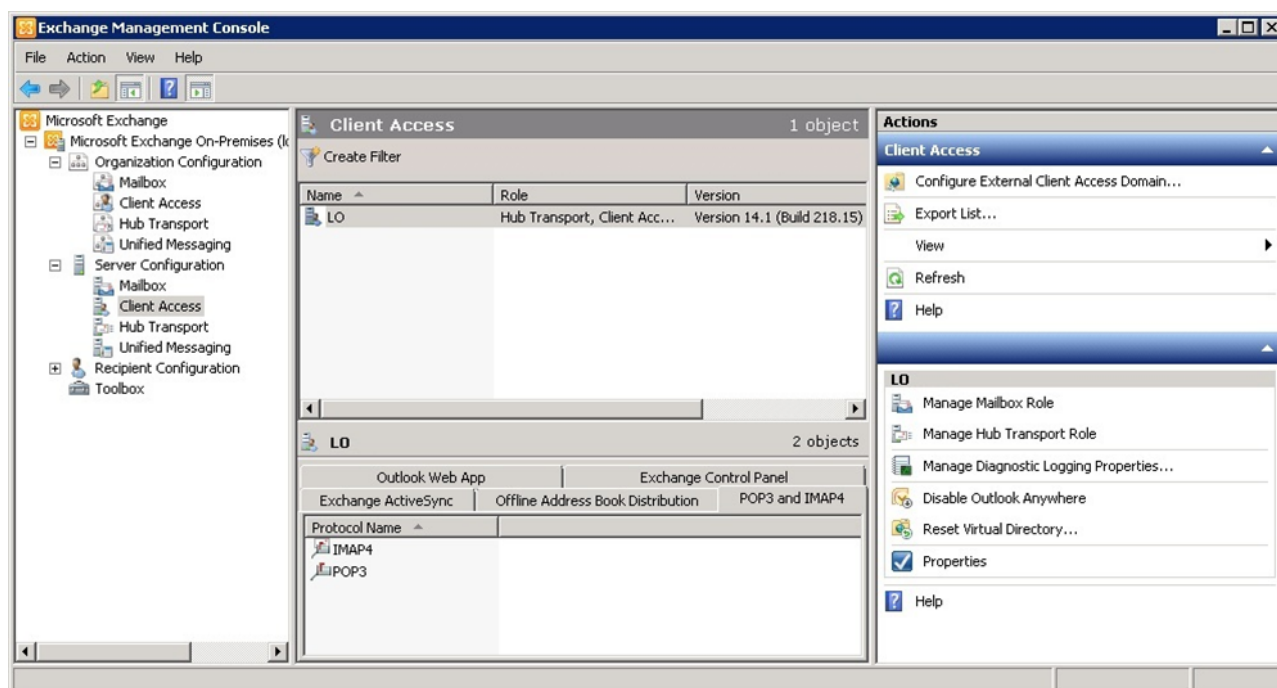
Important

If you are migrating to a newer version of Exchange Server, refer to [Barracuda Message Archiver and Microsoft Exchange Server Migration](#).

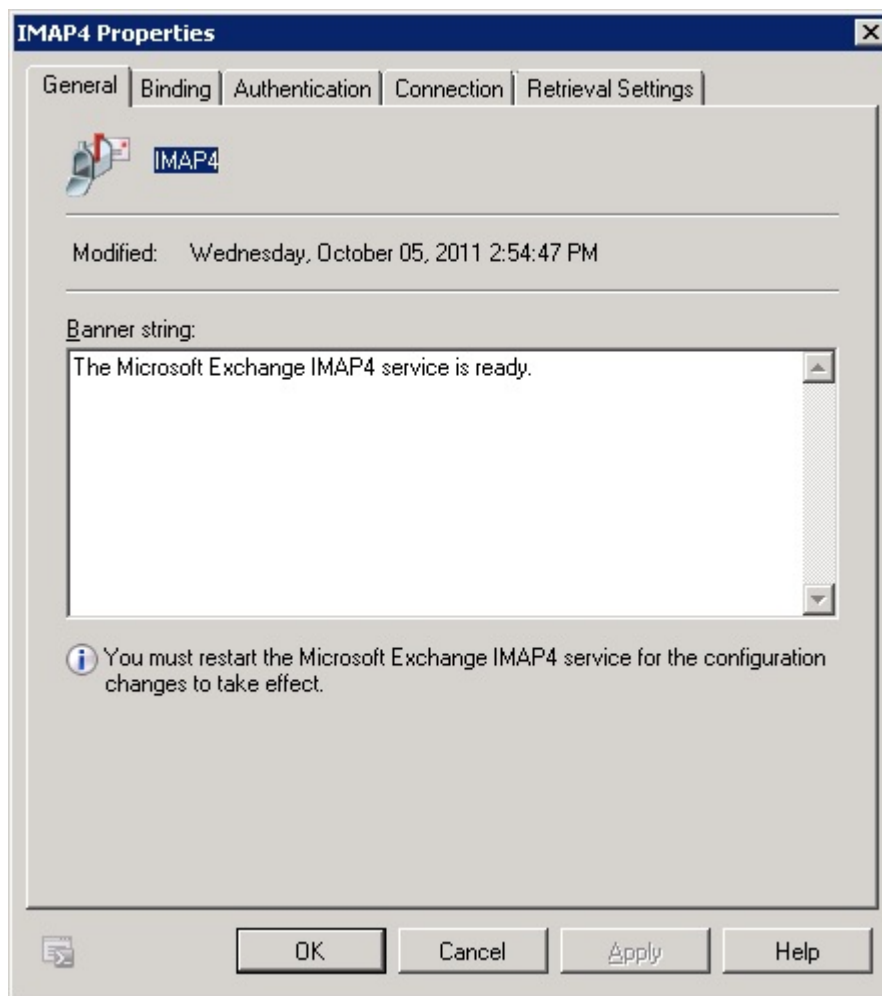
Service Availability

To verify that the IMAP or POP3 service is available on the Exchange Server.

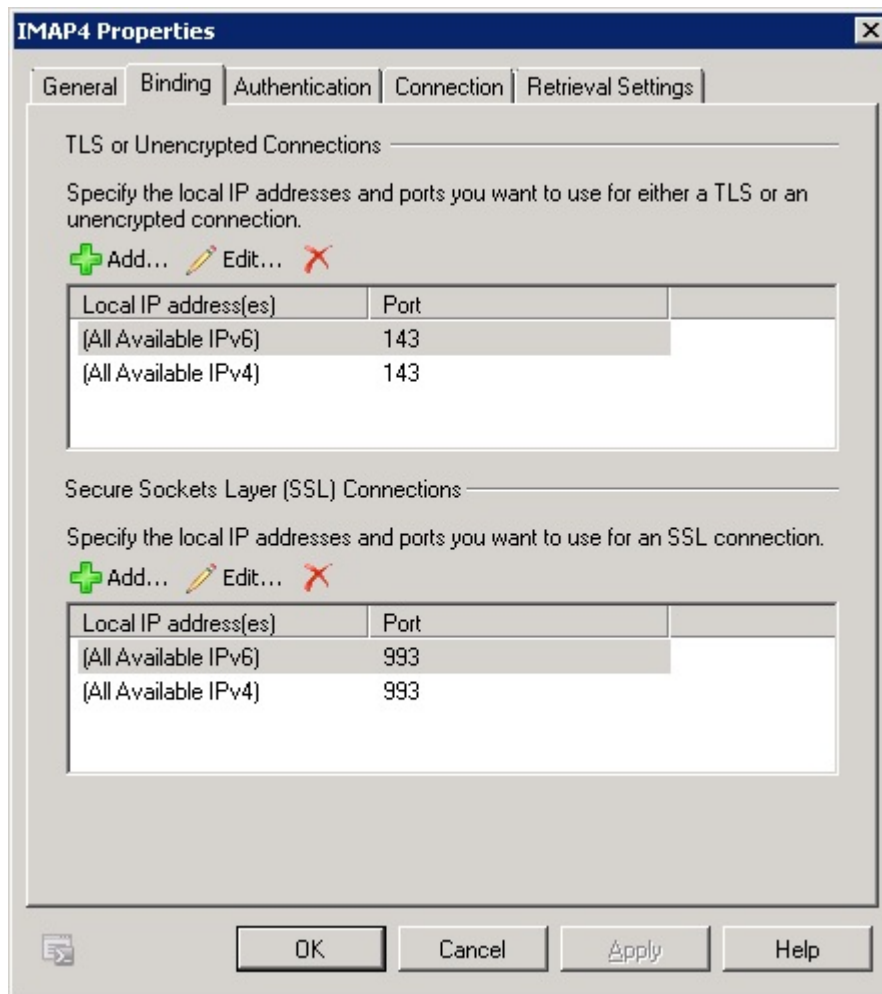
1. Log into the Exchange Server as the Exchange Server Administrator.
2. Go to **All Programs > Microsoft Exchange Server > Exchange Management Console**.
3. In the Console tree, navigate to and click **Client Access**.
4. In the **Work** pane, click the **POP 3 and IMAP 4** tab:



5. Right-click on the desired service, for example, **IMAP4**, and click **Properties**.
6. In the **General** tab, verify the service is "ready" in the **Banner string** window:



7. Click the **Binding** tab to view the default port for the service:



8. To modify the port number, select from the available options:
 - **Add** – Click to add an additional port number
 - **Edit** – Click to modify the port details for the highlighted item
 - **Delete** – Click to remove the highlighted port from the list
9. Click **OK** to save your changes and close the dialog box.

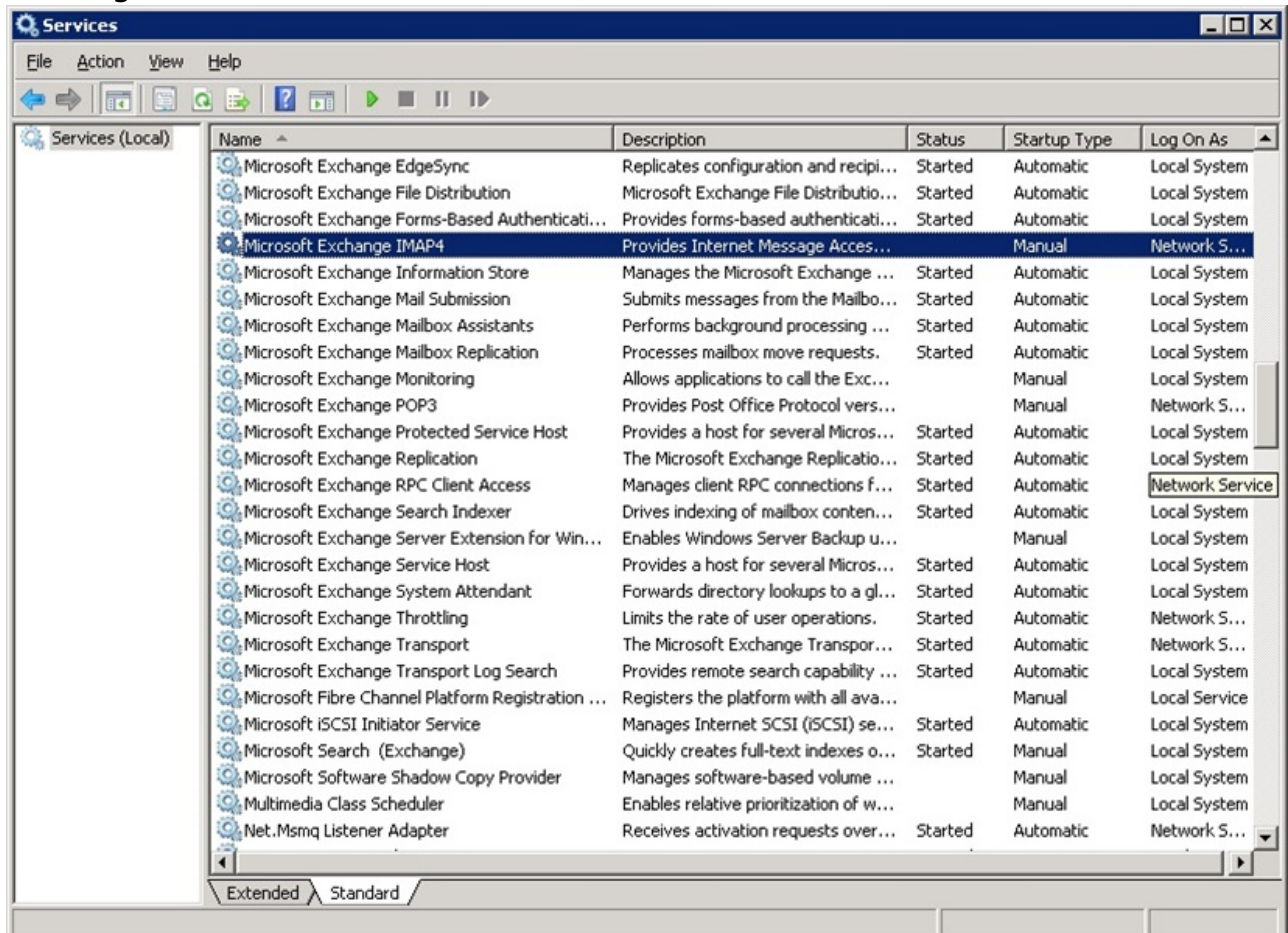
Set Exchange Rich-Text Format to Never Use

To ensure messages display properly in all standard mail clients, turn off rich-text format (RTF) in Exchange.

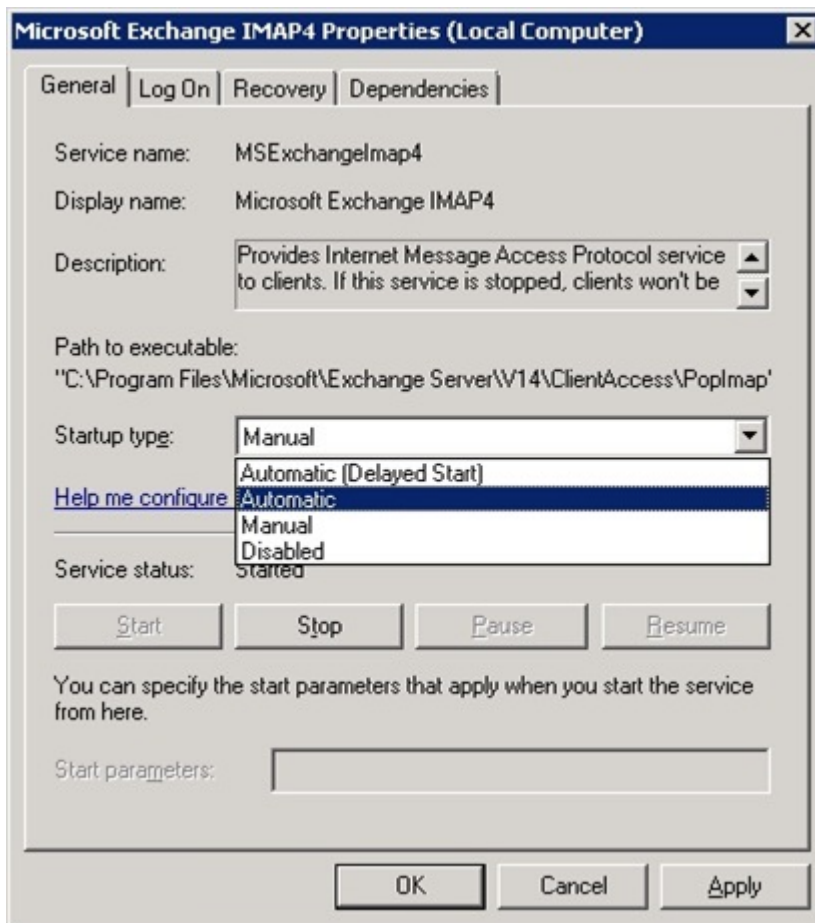
Start the Service

To start the service:

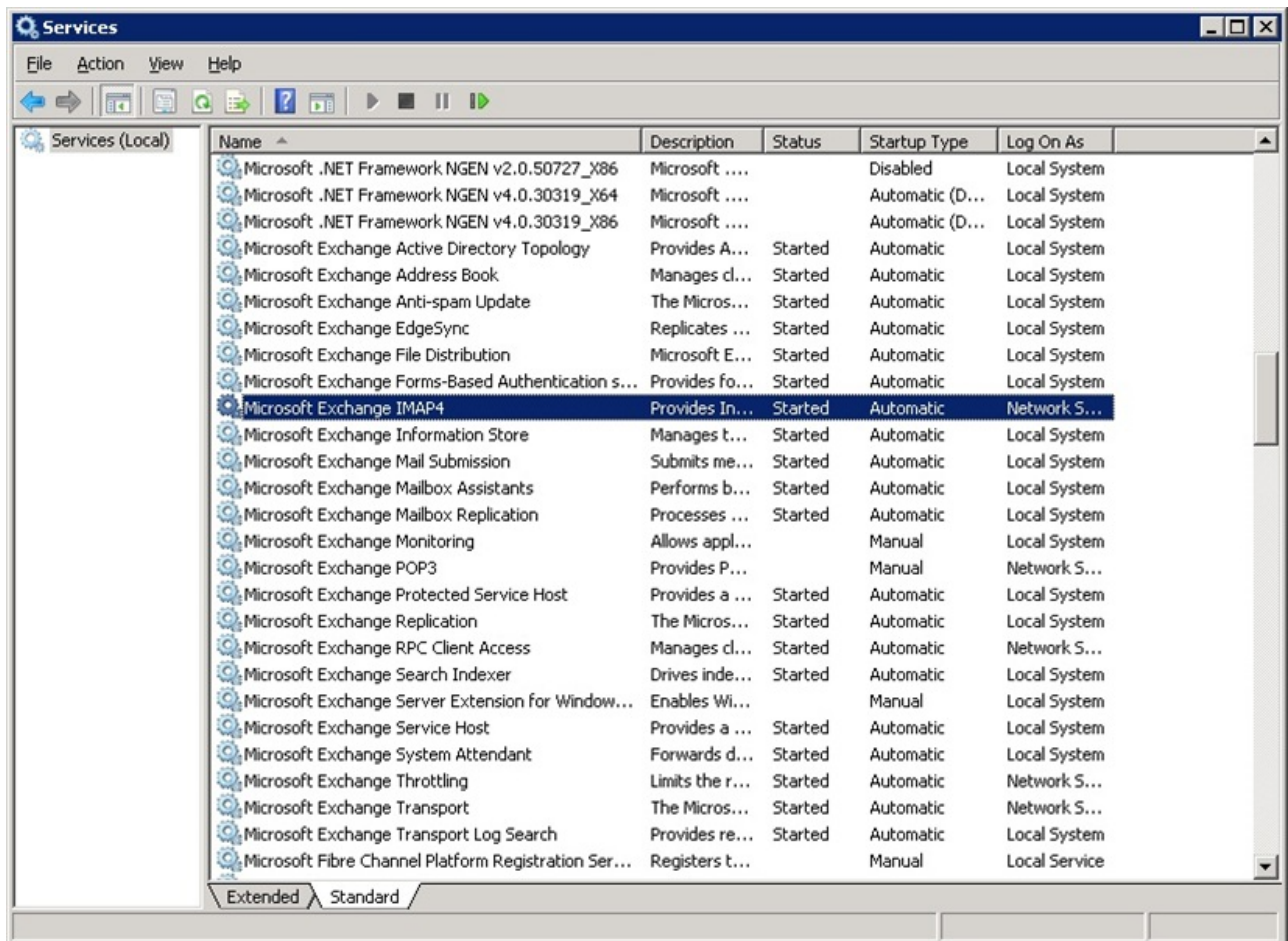
1. Log into the Exchange Server as the Exchange Server Administrator, and go to **Start > Programs > Administrative Tools > Services**.
2. Locate and click the desired service in the **Services** window, for example, **Microsoft Exchange IMAP 4**:



3. Right-click on the service name, and click **Properties**.
4. In the **Properties** dialog box, select **Automatic** from the **Startup type** drop-down menu:



5. Click **Start**, and then click **OK** to save your settings.
6. In the **Services** window, verify the Status is **Started** and the **Startup Type** is **Automatic**:



7. Close the **Services** window.

Add a Journal Account to the Barracuda Message Archiver

Once you configure the service on your Exchange Server, you can add the journal account to the Barracuda Message Archiver to begin retrieving new messages for archiving.

1. Log into the Barracuda Message Archiver as the administrator, and go to **MAIL SOURCES > Journal Accounts**.
2. In the **Journal Accounts** section, enter the following details:
 - **Enable Journal Accounts** – Select **Yes** to allow the Barracuda Message Archiver to poll the listed accounts for new messages for archiving.
 - **Enable Journal Testing** – When set to **Yes**, all listed accounts are tested for connectivity with each page view.
 - **Polling Frequency** – Specify how often to poll each journal account for new messages
3. In the **Journal Accounts Configuration** section, specify the following details for each journal account:
 - **Status** – Displays the connection status for each account.
 - **Server** – Enter the hostname of the mail server where the account resides.

- **Protocol** – Select whether the account is POP3 or IMAP; once you select the protocol, the default port number automatically populates the **Port** field.
- **Username** – Enter the username or ID associated with this mailbox as defined by your server. This is usually the mailbox designated as the "journaling" email address on your mail server, and specified by the complete email address such as **journal@example.com**.
- **Password** – Enter the password associated with the username.
As a best practice, use a unique account for this integration point and grant it the least level of privileges required, coordinating with the system administrator. This journaling account requires write privileges for the associated mailbox on the mail server. For additional information, see [Security for Integrating with Other Systems - Best Practices](#).
- **Encryption** – Select the type of encryption used to connect to the mail server:

- **TLS (if available)**

- **TLS**

When **TLS (if available)** or **TLS** is selected, STARTTLS is supported, but the initial connection is plaintext/insecure. To use either option, you must connect to a plaintext/insecure listener (by default, port 110 for POP3 and 143 for IMAP). Upon connecting, if the server supports the STARTTLS directive, the client issues STARTTLS in an attempt to upgrade the connection to TLS/SSL.

- **SSL**

When **SSL** is selected, the connection is secure from the start but the client can use either SSLv2, SSLv3, or TLSv1, depending on server support.

- **None**

- **Port** – Select the associated port based on the selected protocol; the default value is port 143 for **IMAP**, and port 110 for **POP3**.

4. **Keep Items on Server:**

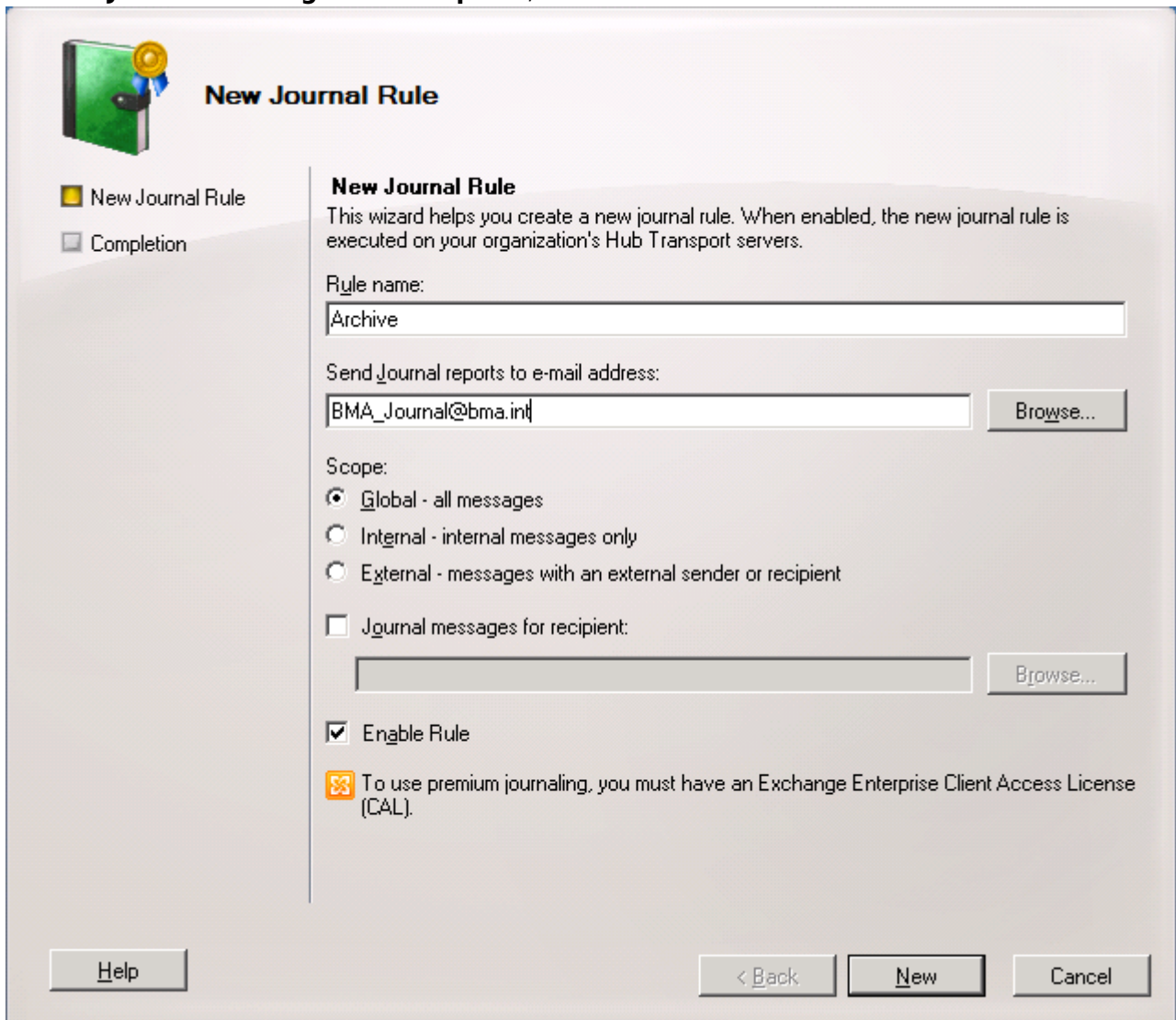
- Select **Off** to allow the Barracuda Message Archiver to automatically clean up the contents of the journal mailbox after each import.
- Select **On** to prevent the Barracuda Message Archiver from removing the journaled messages from the mail server; *only* turn this option on if the contents of the journal account is required by other applications. In this case, make sure that another method for cleaning up the journal account is enabled on the mail server in order to prevent unlimited growth on the mail server and to stay in compliance with your organization's message retention policies.

Barracuda Networks recommends that you set the value of **keep Items on Server** to **Off** to save hard drive space on your mail server.

5. Click **Add** to add the journal account; verify the **Status** field displays green, and then click **Save**.
6. To remove a journal account, click the **Delete** (🗑️) icon, and confirm you want to remove the account.

Add a Journaling Rule

1. Log into the Exchange Server as the Exchange Server Administrator.
2. Go to **All Programs > Microsoft Exchange Server > Exchange Management Console**.
3. In the Console tree, expand **Organization Configuration**, select **Hub Transport**, and select the **Journal Rules** tab.
4. In the **Actions** panel, click **New Journal Rule**; the **New Journal Rule** dialog displays.
5. In the **New Journaling Rule** dialog box, enter a **Rule Name**, for example, type Archive.
6. In the **Send Journal reports to e-mail address** field, enter the username of the mailbox designated as the "journaling" email entered in the **Username** field in the previous set of steps.
7. Select the **Scope** option:
 1. **Global** (*recommended*) - All messages
 2. **External** - Only messages to and from other mail servers
 3. **Internal** - Only internal messages
8. Turn off **Journal messages for recipient**, and turn on **Enable Rule**:



The image shows the 'New Journal Rule' dialog box in the Exchange Management Console. The dialog has a title bar with a green icon and the text 'New Journal Rule'. On the left, there are two tabs: 'New Journal Rule' (selected) and 'Completion'. The main area contains the following fields and options:

- Rule name:** A text box containing 'Archive'.
- Send Journal reports to e-mail address:** A text box containing 'BMA_Journal@bma.int' and a 'Browse...' button.
- Scope:** Three radio buttons: 'Global - all messages' (selected), 'Internal - internal messages only', and 'External - messages with an external sender or recipient'.
- Journal messages for recipient:** An unchecked checkbox, with an empty text box and a 'Browse...' button below it.
- Enable Rule:** A checked checkbox.
- License:** A yellow icon and text: 'To use premium journaling, you must have an Exchange Enterprise Client Access License (CAL)'.

At the bottom, there are three buttons: 'Help', '< Back', and 'New', and a 'Cancel' button on the right.

9. Click **New** to create the Journaling rule, and click **Finish** to return to the **Journal Rules** tab where the newly-created rule displays in the list.

Figures

1. emc_client_access.png
2. services_ready.jpg
3. imap4_properties.jpg
4. services.jpg
5. imap4_auto.jpg
6. services_standard.jpg
7. trashcan.jpg
8. newjournalrule.png

© Barracuda Networks Inc., 2024 The information contained within this document is confidential and proprietary to Barracuda Networks Inc. No portion of this document may be copied, distributed, publicized or used for other than internal documentary purposes without the written consent of an official representative of Barracuda Networks Inc. All specifications are subject to change without notice. Barracuda Networks Inc. assumes no responsibility for any inaccuracies in this document. Barracuda Networks Inc. reserves the right to change, modify, transfer, or otherwise revise this publication without notice.