

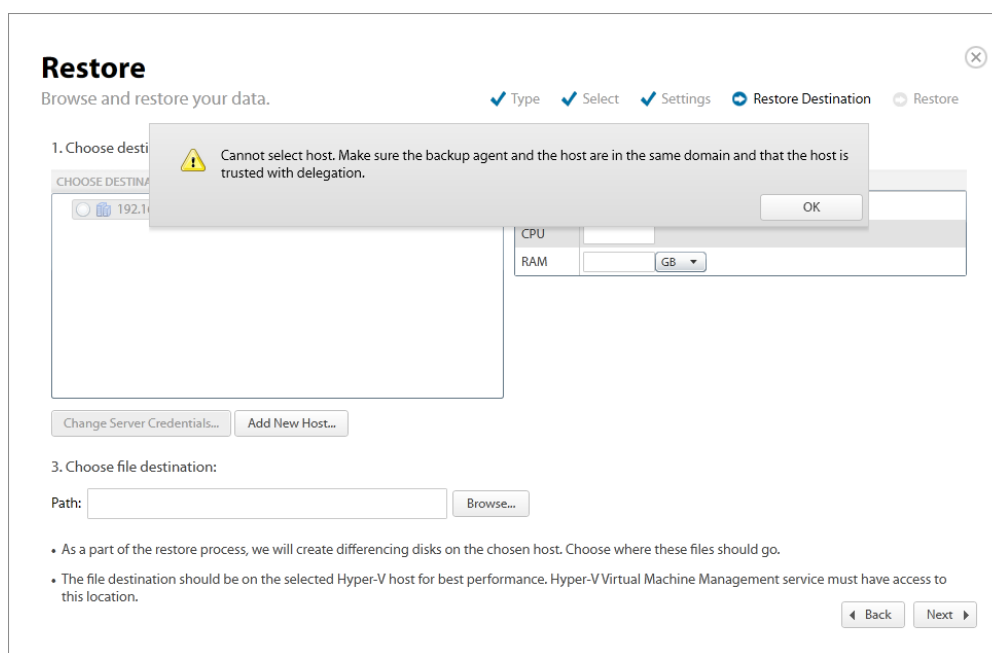
Cannot Select a Hyper-V host for Rapid Recovery

<https://campus.barracuda.com/doc/93197940/>

This article offers steps to explain and resolve the error **Cannot select host. Make sure the backup agent and the host are in the same domain and that the host is trusted with delegation** encountered during Rapid Recovery.

Issue

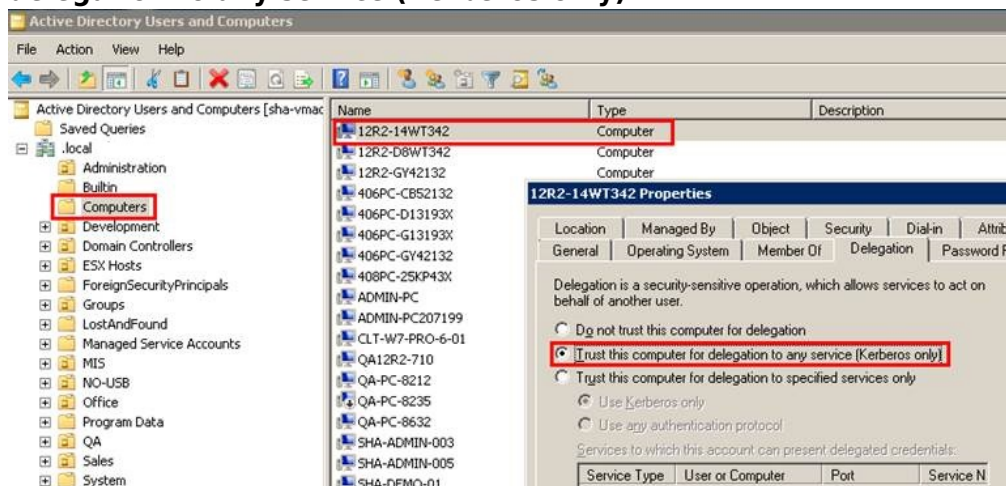
During Rapid Recovery, I receive an error **Cannot select host. Make sure the backup agent and the host are in the same domain and that the host is trusted with delegation** and am unable to proceed.



Resolution

This error can result from a number of different causes. Attempt the items outlined in each step before proceeding to the next. It is likely you will not need to perform all of the steps outlined below to resolve this issue.

1. Ensure the host name and IP address are correct, that the host is powered on, and that the agent and the host are in the same domain.
 - If you need to recover a domain controller with Rapid Recovery, you will need to install the agent on the Hyper-V host to proceed.
2. Adjust the host's delegation property in Active Directory to **Trust this computer for delegation to any service (Kerberos only)**.



This interface will look different depending on the version of Windows you are running.

3. Ensure the communication between the agent and host is not blocked by a firewall.
 - Open the **Group Policy Object Editor** snap-in (gpedit.msc) to edit the Group Policy object (GPO) that is used to manage Windows Firewall settings in your organization.
 - Open **Computer Configuration**. Open **Administrative Templates**. Open **Network**. Open **Network Connections**. Open **Windows Firewall**, and then open either **Domain Profile** or **Standard Profile**, depending on which profile you want to configure.
 - Enable the following exception: **Allow Remote Administration Exception** and/or **Allow File and Printer Sharing Exception**.
4. Ensure the **TCP/IP NetBIOS Helper** service is running and set to **auto start after restart**.
5. Ensure the **Remote Procedure Call (RPC)** service is running and set to **auto start after restart**.
6. Ensure the **Windows Management Instrumentation** service is running and set to **auto start after restart**.
7. Ensure the [EnableDCOM](#) setting is set to Y in the registry.
 - Open regedit and navigate to HKLM\Software\Microsoft\OLE.
 - If the **EnableDCOM** setting is set to **N**, change it to **Y**.
 - If the **EnableDCOM** setting is missing, create a new string value with the name **EnableDCOM** and set to **Y**.

Figures

1. cannot select host.png
2. image001.jpg

© Barracuda Networks Inc., 2024 The information contained within this document is confidential and proprietary to Barracuda Networks Inc. No portion of this document may be copied, distributed, publicized or used for other than internal documentary purposes without the written consent of an official representative of Barracuda Networks Inc. All specifications are subject to change without notice. Barracuda Networks Inc. assumes no responsibility for any inaccuracies in this document. Barracuda Networks Inc. reserves the right to change, modify, transfer, or otherwise revise this publication without notice.