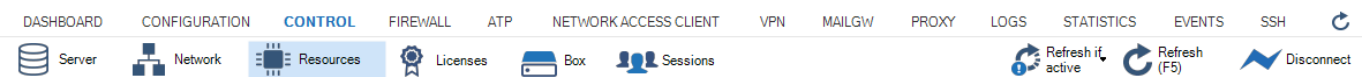


## Resources Page

<https://campus.barracuda.com/doc/95259112/>

The **Resources** page provides information on active processes on the Barracuda CloudGen Firewall, such as the machine uptime, number of logged-in-users, load average, and memory usage. To access the **Resources** page, open the **CONTROL** tab and click the **Resources** icon in the ribbon bar.



## Processes Section

The processes section gives an overview of all active processes running on the CloudGen Firewall.

Show Details...  Single PID 10:03:57 up 6 days, 22:19 Mainboard Info...

Name	Proc	%CPU	Num FD	Memory	Shared	Listen	Establ.	UDP	Syn
TOTAL	261	23	5168	12609980	361432	80	37	150	2
✔ VIRT1_HQDNS	2	0	61	98112	2696	12	0	12	0
✔ VIRT1_HQDYN	3	0	23	35192	1300	3	4	0	1
✔ VIRT1_HQFW1	1	0	3	108552	1340	0	0	0	0
✔ VIRT1_HQMAIL	3	0	21	41784	3840	3	0	2	0
✔ VIRT1_HQPRXY	1	0	18	9028	2432	0	0	0	0
✔ VIRT1_HQRLY	1	0	4	10200	2800	0	0	0	0
✔ VIRT1_HQURL	2	0	13	151944	4340	0	0	2	0
✔ VIRT1_HQVIR	2	1	41	677616	8116	2	1	3	0
✔ VIRT1_HQVPN	10	0	117	2342760	77096	5	0	8	0
✔ VIRT1_acs	2	0	14	99880	3820	0	0	0	0
✔ acpfd	1	0	0	0	0	0	0	0	0
✔ acpfhd0	1	0	0	0	0	0	0	0	0
✔ acpfhd1	1	0	0	0	0	0	0	0	0
✔ acpfhd2	1	0	0	0	0	0	0	0	0
✔ acpfhd3	1	0	0	0	0	0	0	0	0
✔ agetty	1	0	3	1504	508	0	0	0	0
✔ aio	1	0	0	0	0	0	0	0	0

The table header includes additional control elements that allow you to control the display of process information.

- **Show Details...** - Get detailed information on an active process.
- **Single PID** - If checked, child processes in table are also displayed.
- **HH:MM:ss up X days** - Uptime of the firewall since last restart.

- **Mainboard Info...** - Get detailed information on the mainboard of the firewall.

The **Processes** table shows information on active processes. You can also view detailed information on a selected entry and track each task to a single process.

Information for each process or process group is organized in the following columns:

- **Name** - The name of the process. Small graphical bars to the left of the name indicate the CPU load in percent, ranging from 0%, 10%, 25%, 50%, 70% to 90%.
- **Proc** - The number of processes with the same name.
- **%CPU** - The percentage of CPU load that is used.
- **Num FD** - The number of file descriptors used by processes with this name.
- **Memory** - The amount of memory (in kB) used exclusively by processes with this name.
- **Shared** - Shared memory in kB used by processes with this name.
- **Listen** - The number of listening TCP sockets owned by processes with this name.
- **Establ.** - The number of established sockets owned by processes with this name.
- **UDP** - The number of UDP sockets owned by processes with this name.
- **Syn Sent** - The number of unanswered SYN packets sent by processes with this name / the number of unanswered SYN packets for which the timeout has not yet expired.
- **Close** - The number of sockets owned by processes with this name.
- **Last ACK** - The number of sockets in state LAST\_ACK owned by processes with this name.

## Order of Processes

---

By default, processes are displayed in ascending order by their name. This is indicated by the blue highlighted category label. The small triangle indicates the sort order of the displayed table entries, which can be either ascending or descending.

To change the sort order, click on the corresponding label of a table category.

## Reordering Columns in the Process Table

---

To reorder the columns in the process table, drag and drop the column header to your desired position.

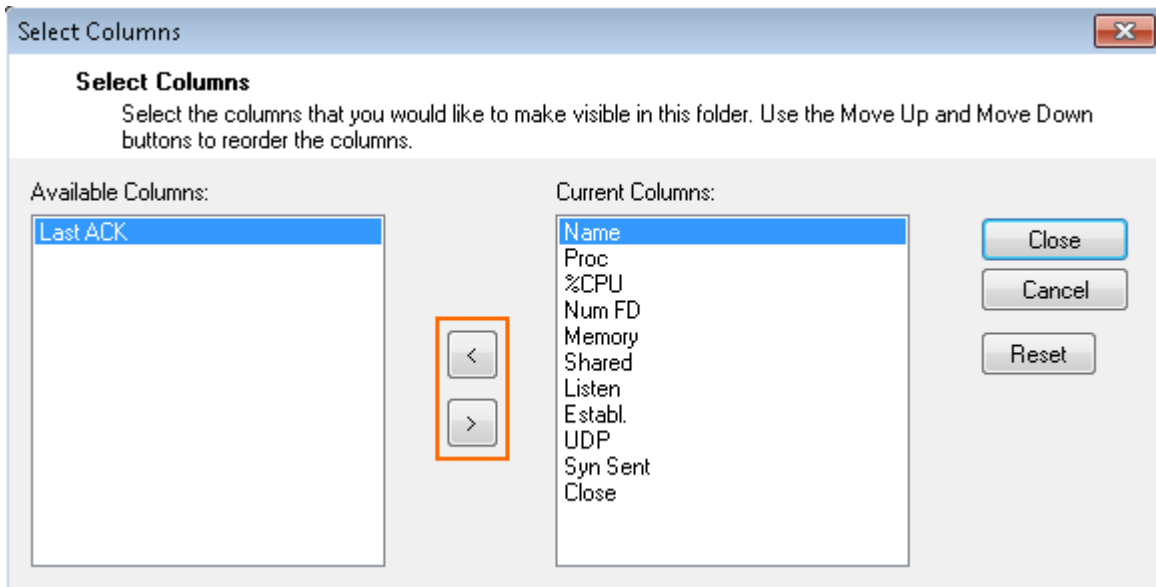
## Selecting Categories for Display in the Processes Table

---

You can customize the categories of the columns displayed in the process table.

To specify the information category of your choice:

1. Right-click inside of the display area of the processes table.
2. In the pop-up menu, click on **Select Columns...**
3. From the **Available Columns** table, select the category that you want to be displayed in the process list.
4. Click on the > button to move the information field from the column **Available Columns** to the **Current Columns**. Entries in the table **Current Columns** will be displayed in the list order. Click on < to remove the category from the values to be displayed.
5. To the apply the changes, click **Close** .



## Viewing Process Details

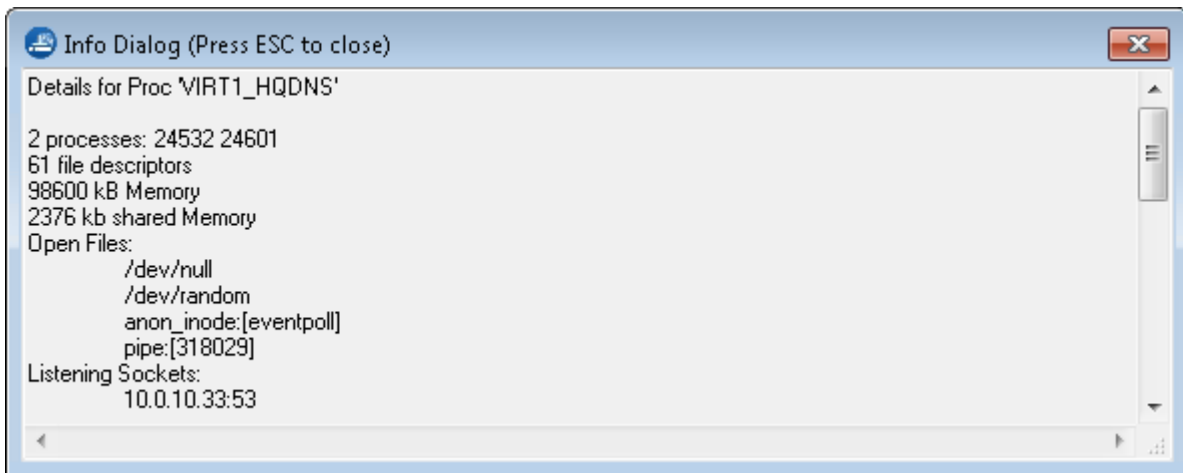
To view details on a running process:

1. Select a process in the process list table.
2. Click **Show details...** at the top left of the table.

Show Details...										Mainboard Info...
Single PID 12:21:53 up 7 days, 37 min										
Name	Proc	%CPU	Num FD	Memory	Shared	Listen	Establ.	UDP	S	
TOTAL	259	18	5145	12577516	349700	80	31	147	2	
VIRT1_HQDNS	2	0	61	98612	2376	12	0	12	0	
VIRT1_HQDYN	3	0	23	35296	1248	3	4	0	1	

The **Info Dialog** window opens with the following information on the selected process:

- The process IDs of all processes with the same name.
- Detailed list of all open files.
- The IP addresses and ports of listening TCP sockets.
- The local IP:port and remote IP:port combinations of all established sockets.
- The IP addresses and ports of UDP sockets.



## Displaying Subprocesses

Processes can create a hierarchical order of child processes. The list is updated every two seconds and includes all child processes.

Check the box **Single PID** to show child processes in the list.

Name	Proc	%CPU	Num FD	Memory	Shared	Listen	Establ.	UDP	S.
TOTAL	259	22	5146	12577704	593976	1256	32	748	2
✓ VIRT1_HQDNS...	1	0	4	10596	2376	0	0	0	0
✓ VIRT1_HQDNS...	1	0	57	88016	1536	12	0	12	0
✓ VIRT1_HQDYN...	1	0	4	12164	1024	0	0	0	0
✓ VIRT1_HQDYN...	1	0	7	19200	1248	1	2	0	0
✓ VIRT1_HQDYN...	1	0	12	3932	476	2	2	0	1

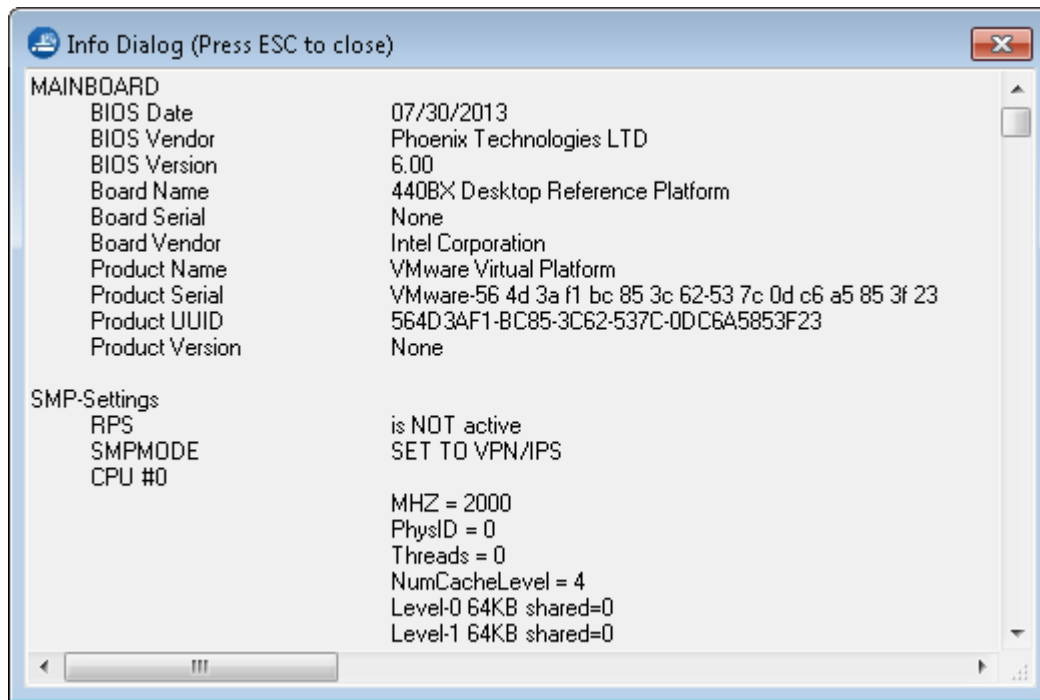
## Displaying Information on the Mainboard

Click **Mainboard Info...** to display information on the mainboard.

Show Details...  Single PID 12:25:47 up 7 days, 40 min Mainboard Info...

Name	Proc	%CPU	Num FD	Memory	Shared	Listen	Establ.	UDP	S
TOTAL	259	25	5146	12577396	349832	80	31	147	2
VIRT1_HQDNS	2	0	61	98612	2376	12	0	12	0

The **Mainboard Info** window opens with a detailed breakdown of technical information on your underlying system.



## System Section

The system section displays the usage of RAM and disk space in real time. For hardware systems, you can also view the temperature and fan speed. (CD-ROMs and floppy disks are not displayed.)

Load (4 cores)	0.37, 0.47, 0.48
/	32% - 2.5 G of 7.9 G
/art	57% - 1.1 G of 2.0 G
/boot	31% - 59.2 M of 189.9 M
/phion0	9% - 5.8 G of 67.7 G
RAM	46% - 1.3 G of 2.8 G

The following information is provided:

- **CPU** - Displays the current CPU load of the CloudGen Firewall.
- **Disk Space** - Displays real-time usage of all currently mounted file systems. Each file system is identified by its mount point. In a default installation of the CloudGen Firewall, the following file systems at a minimum should be present:
  - **/** - Root directory.
  - **/boot** - Directory for boot images (usually located at the beginning of a disk).
  - **/phion0** - Directory for logs and statistical data.
- **RAM** - Displays the real-time usage of RAM.
- **Temperature** - Displays the temperature of the mainboard and CPU.
- **Fan Speed** - Displays the speed of the chassis fan.

## Figures

1. resources\_page\_00.png
2. processes\_section\_00.png
3. select\_information\_category\_00.png
4. show\_details\_00.png
5. res\_page\_02.png
6. include\_child\_processes\_00.png
7. mainboard\_info\_00.png
8. mainboard\_info\_01.png
9. system\_section\_00.png

© Barracuda Networks Inc., 2022 The information contained within this document is confidential and proprietary to Barracuda Networks Inc. No portion of this document may be copied, distributed, publicized or used for other than internal documentary purposes without the written consent of an official representative of Barracuda Networks Inc. All specifications are subject to change without notice. Barracuda Networks Inc. assumes no responsibility for any inaccuracies in this document. Barracuda Networks Inc. reserves the right to change, modify, transfer, or otherwise revise this publication without notice.